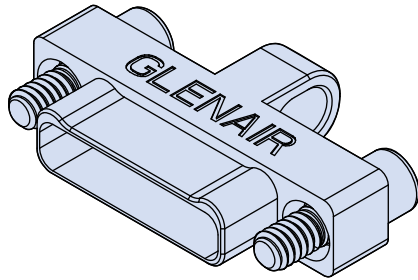


899-011 Dual Row Nano Rectangular EMI Cover



Glenair EMI Covers offer the same EMI protection as a mated connector from electro magnetic interference as a result of electromagnetic induction emitted from intended external sources such as radio transmissions or electromagnetic radiation and from unintentional sources such as electric power transmission lines. These covers feature a solid one piece construction machined from your choice of aluminum, stainless steel or titanium. Standard aluminum finishes include cadmium or electroless nickel plating. Available with or without lanyard attachment. Covers are in accordance with MIL-DTL-32139/3 and MIL-DTL-32139/4.

How to Order Nano Dual Row EMI Cover

Sample Part Number	899-011	-25	P	S	J	F	3	-126
Series	899-011 EMI Dual Row, Nanominiature Cover							
Insert Arrangement	9, 15, 21, 25, 31, 37, 51, 65, 69, 85; See Table II for dimensions							
Body Style	P = Plug S = Receptacle							
Cover Material and Finish	A1 - Aluminum Shell, Cadmium Plating				S - Stainless Steel, Passivated			
	A2 - Aluminum Shell, Electroless Nickel Plating				T - Titanium, Unplated			
Hardware	J - Jackscrew				T - Female Threaded			
	Female threads are available on plug covers only if cover material is titanium or stainless steel.							
Attachment Type	N - No Lanyard F - Stainless Steel Wire Rope, Nylon jacket, Black, Ø .034 G - Flexible Nylon Rope, Ø .090 H - Stainless Steel Wire Rope, Teflon Jacket, Black, Ø .034							
Attachment Length	Attachment Length in Inches (Omit for No Lanyard)							
Attachment Diameter	See Table I; (Omit for No Lanyard)							

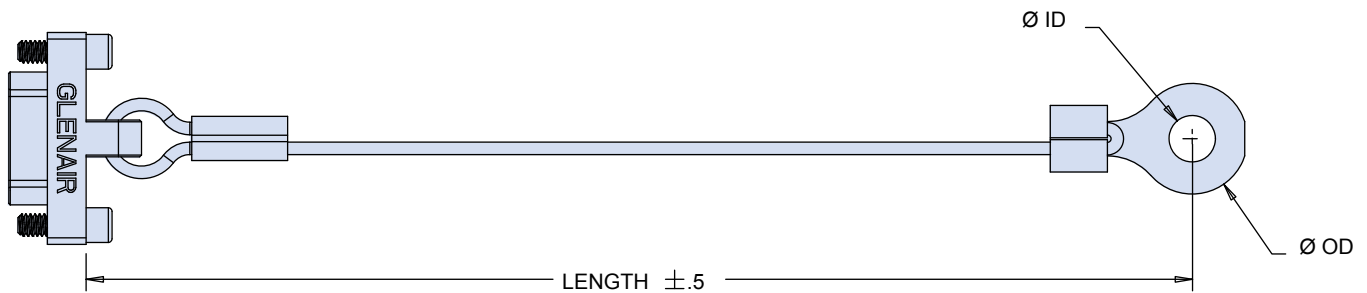


Table I: Attachment Diameter

Dash No.	-098	-126	-140	-156	-167	-188	-197	-218
ID	Ø .098 (2.49)	Ø .126 (3.20)	Ø.140 (3.56)	Ø.156 (3.96)	Ø .167 (4.24)	Ø.188 (4.78)	Ø.197 (5.00)	Ø.223/.218 (5.66/5.54)
OD	Ø .300 (7.62)	Ø .300 (7.62)	Ø .300 (7.62)	Ø .300 (7.62)	Ø .300 (7.62)	Ø .300 (7.62)	Ø .300 (7.62)	Ø .300 (7.62)

Dimensions in inches (millimeters) and are subject to change without notice.

Table II: Dual Row Nano Dimensions

899-011 Plug Cover						899-011 Receptacle Cover											
<p>SECTION B-B</p>						<p>Plug With "T" Female Thread Option</p> <p>Receptacle With "J" Jackscrew Option</p>						<p>SECTION AQ-B</p>					
Layout	A		B BSC.		C BSC.		D		E		F Thread						
	In.	mm.	In.	mm.	In.	mm.	In. ±.005	mm ±0.13	In.	mm							
9P	.375	9.52	.270	6.86	.160	4.06	.125	3.18	.0575	1.46	#0-80 UNF						
9S	.375	9.52	.270	6.86	.163	4.14	.125	3.18	.0575	1.46	#0-80 UNF						
15P	.450	11.43	.345	8.76	.235	5.97	.125	3.18	.0575	1.46	#0-80 UNF						
15S	.450	11.43	.345	8.76	.238	6.04	.125	3.18	.0575	1.46	#0-80 UNF						
21P	.525	13.33	.420	10.67	.310	7.87	.125	3.18	.0575	1.46	#0-80 UNF						
21S	.525	13.33	.420	10.67	.313	7.95	.125	3.18	.0575	1.46	#0-80 UNF						
25P	.575	14.60	.470	11.94	.360	9.14	.125	3.18	.0575	1.46	#0-80 UNF						
25S	.575	14.60	.470	11.94	.363	9.22	.125	3.18	.0575	1.46	#0-80 UNF						
31P	.650	16.51	.545	13.84	.435	11.05	.125	3.18	.0575	1.46	#0-80 UNF						
31S	.650	16.51	.545	13.84	.438	11.12	.125	3.18	.0575	1.46	#0-80 UNF						
37P	.725	18.41	.620	15.75	.510	12.95	.125	3.18	.0575	1.46	#0-80 UNF						
37S	.725	18.41	.620	15.75	.513	13.03	.125	3.18	.0575	1.46	#0-80 UNF						
51P	.900	22.86	.795	20.19	.685	17.40	.125	3.18	.0575	1.46	#0-80 UNF						
51S	.900	22.86	.795	20.19	.688	17.47	.125	3.18	.0575	1.46	#0-80 UNF						
65P	1.075	27.30	.970	24.64	.860	21.84	.125	3.18	.0575	1.46	#0-80 UNF						
65S	1.075	27.30	.970	24.64	.863	21.92	.125	3.18	.0575	1.46	#0-80 UNF						
69P	1.125	28.57	1.020	25.91	.910	23.11	.125	3.18	.0575	1.46	#0-80 UNF						
69S	1.125	28.57	1.020	25.91	.913	23.19	.125	3.18	.0575	1.46	#0-80 UNF						
85P	1.377	34.97	1.246	31.65	1.110	28.19	.150	3.81	.0700	1.78	#2-56 UNC						
85S	1.377	34.97	1.246	31.65	1.113	28.27	.150	3.81	.0700	1.78	#2-56 UNC						

Dimensions in inches (millimeters) and are subject to change without notice.