

PLEASE CHECK WWW.MOLEX.COM FOR LATEST PART INFORMATION

Part Number: [0002066122](#)
Status: **Active**
Overview: [standard_062](#)
Description: 1.57mm (.062") Diameter, Standard .062" Pin and Socket PC Tail Terminal, Series 1778, Male, with Selective Gold (Au) Plated Brass Contact, Bag

Documents:

[Drawing \(PDF\)](#) [RoHS Certificate of Compliance \(PDF\)](#)

General

Product Family	Crimp Terminals
Series	1778
Comments	PC Tail Brass for Standard .062" Housing
Crimp Quality Equipment	Yes
Overview	standard_062
Product Name	Standard .062"

Physical

Gender	Male
Material - Metal	Brass
Material - Plating Mating	Gold
Material - Plating Termination	Tin
Packaging Type	Bag
Plating min: Mating (µin)	30
Plating min: Mating (µm)	0.75
Plating min: Termination (µin)	100
Plating min: Termination (µm)	2.5
Termination Interface: Style	Through Hole
Wire Insulation Diameter	3.00mm (.120") max.
Wire Size AWG	18, 20, 22, 24, 26, 28, 30
Wire Size mm ²	N/A

Material Info

Old Part Number 1778568L

Reference - Drawing Numbers

Sales Drawing SD-1778-*



image - Reference only

EU RoHS

**ELV and RoHS
Compliant**
REACH SVHC
 Not Reviewed
**Halogen-Free
Status**
Not Reviewed

China RoHS



**Need more information on product
environmental compliance?**

Email productcompliance@molex.com
 For a multiple part number RoHS Certificate of Compliance, [click here](#)

Please visit the [Contact Us](#) section for any non-product compliance questions.

Search Parts in this Series

[1778Series](#)

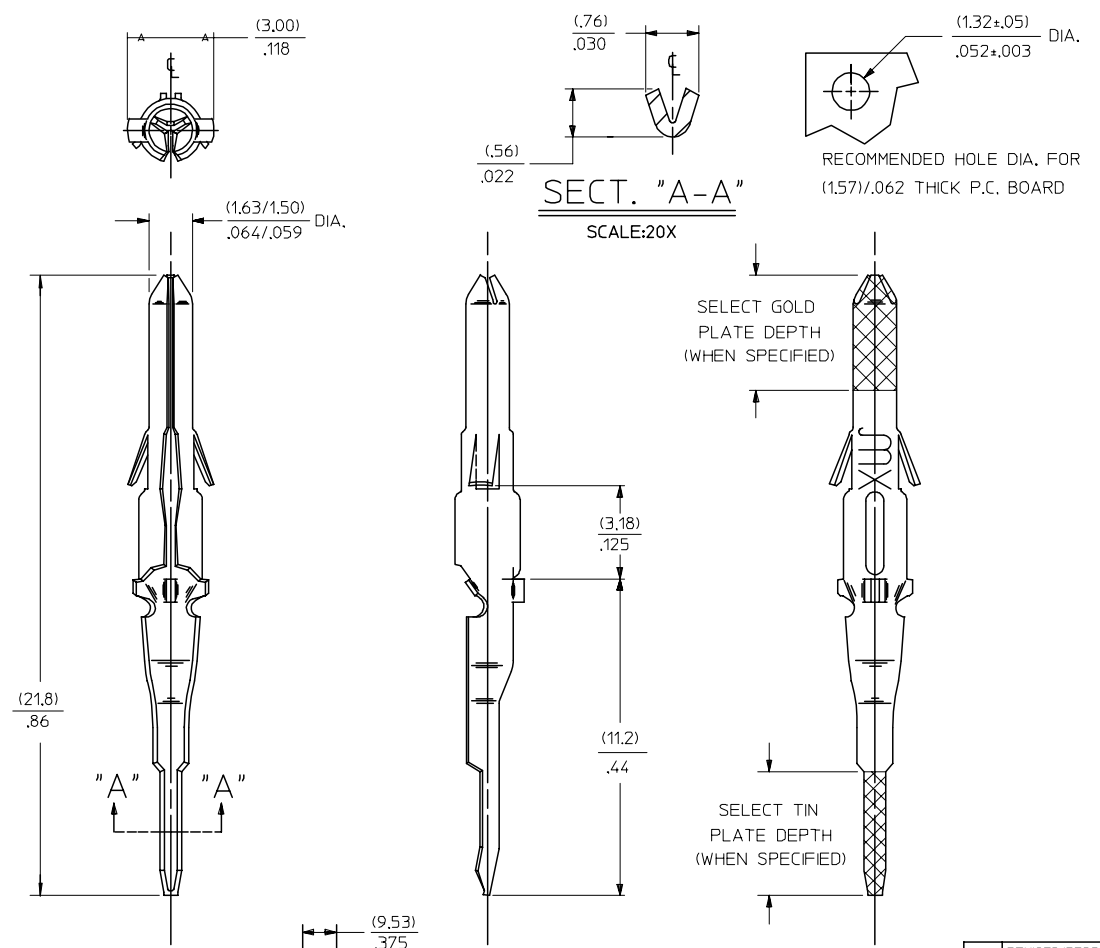
Application Tooling | [FAQ](#)

Tooling specifications and manuals are found by selecting the products below. Crimp Height Specifications are then contained in the Application Tooling Specification document.

Global

Description	Product #
Manual Extraction Tool	0011030002

13	12	11	10	9	8	7	6	5	4	3	2	1778
PART NO.		ENG. NO.										
02-06-8103		1778-P(909)L										
02-06-6122		1778-(228)L										



LEGEND
 1778-(****)*
 P-PREPLATE
 BLANK=POSTPLATE
 FINISH CODE
 FORM
 L=LOOSE

NOTES:

- MATERIAL: BRASS
- FINISH:
 - * 909 HOT TIN DIP (.0025)/.000100 MIN.
 - * 228 SELECT GOLD PLATE (.00075)/.000030 MIN. IN CONTACT AREA. SELECT TIN (.0025)/.000100 MIN. IN TAIL AREA. OVER (.00125)/.000050 MIN. NICKEL OVERALL.
 - * THE PRIMARY SHIPPING CARTON WILL BE LABELED, 'COMPLIANT TO RoHS DIRECTIVE' 2002/95/EC AND ANNEX II OF DIRECTIVE 2000/53/EC', AND CARTONS WITHOUT THIS LABEL MAY CONTAIN PRODUCT WITH TIN-LEAD.
- PRODUCT SPECIFICATION: PS-02-06.
- PACKAGING INFORMATION: NOT AVAILABLE
- TERMINAL FOR USE WITH (1.57)/.062 SERIES HOUSINGS.

AC	REVISED/REDRAWN UCP2004-2367 RHOLTS 5/24/04
AB	OBSOLETE P/N UCR2002-0270 COMERCI 01/9/26
AA2	SHOW SEL TIN-LEAD PER ECN #US 1218 6-5-95 RW
AA1	X-REMOVE -(P913) EGR U2 0220 CNC 2/10/92 RW
AA	REV. & REDRAWN PER ECR 10372 GEP 12-3-87 RW
LTR.	REVISIONS

REVISED/REDRAWN EC NO: UCP2004-2367 DRAWN: RHOLTS 2004/07/16 CHKD: FSMITH 2004/07/16 APPR: FSMITH 2004/08/05 REV: AC	QUALITY SYMBOLS	GENERAL TOLERANCES (UNLESS SPECIFIED) <table border="1"> <tr> <th colspan="2">mm</th> <th colspan="2">INCH</th> </tr> <tr> <td>4 PLACES</td> <td>± .010</td> <td>± .005</td> <td></td> </tr> <tr> <td>3 PLACES</td> <td>± .015</td> <td>± .010</td> <td></td> </tr> <tr> <td>2 PLACES</td> <td>± 0.13</td> <td>± .010</td> <td></td> </tr> <tr> <td>1 PLACE</td> <td>± 0.25</td> <td>± .010</td> <td></td> </tr> <tr> <td colspan="4">ANGULAR ±1/2°</td> </tr> </table>	mm		INCH		4 PLACES	± .010	± .005		3 PLACES	± .015	± .010		2 PLACES	± 0.13	± .010		1 PLACE	± 0.25	± .010		ANGULAR ±1/2°				SCALE 6:1	DESIGN UNITS INCH	THIRD ANGLE PROJECTION	REVISE ON CAD ONLY
	mm		INCH																											
	4 PLACES		± .010	± .005																										
	3 PLACES		± .015	± .010																										
	2 PLACES		± 0.13	± .010																										
1 PLACE	± 0.25	± .010																												
ANGULAR ±1/2°																														
		DIMENSION STYLE IN/MM		TITLE		TERMINAL, MALE, .062 DIA., P.C. TAIL																								
		DRAWN BY GEP	DATE 1987/11/02																											
		CHECKED BY RW	DATE 1987/11/02																											
		APPROVED BY RAS	DATE 1987/11/02	MATERIAL NO. SEE CHART	DOCUMENT NO. SD-1778-*	SHEET NO. 1 OF 1																								