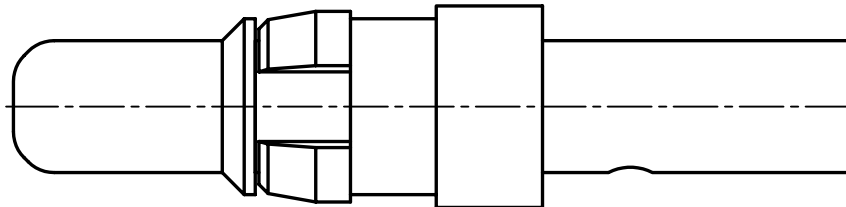
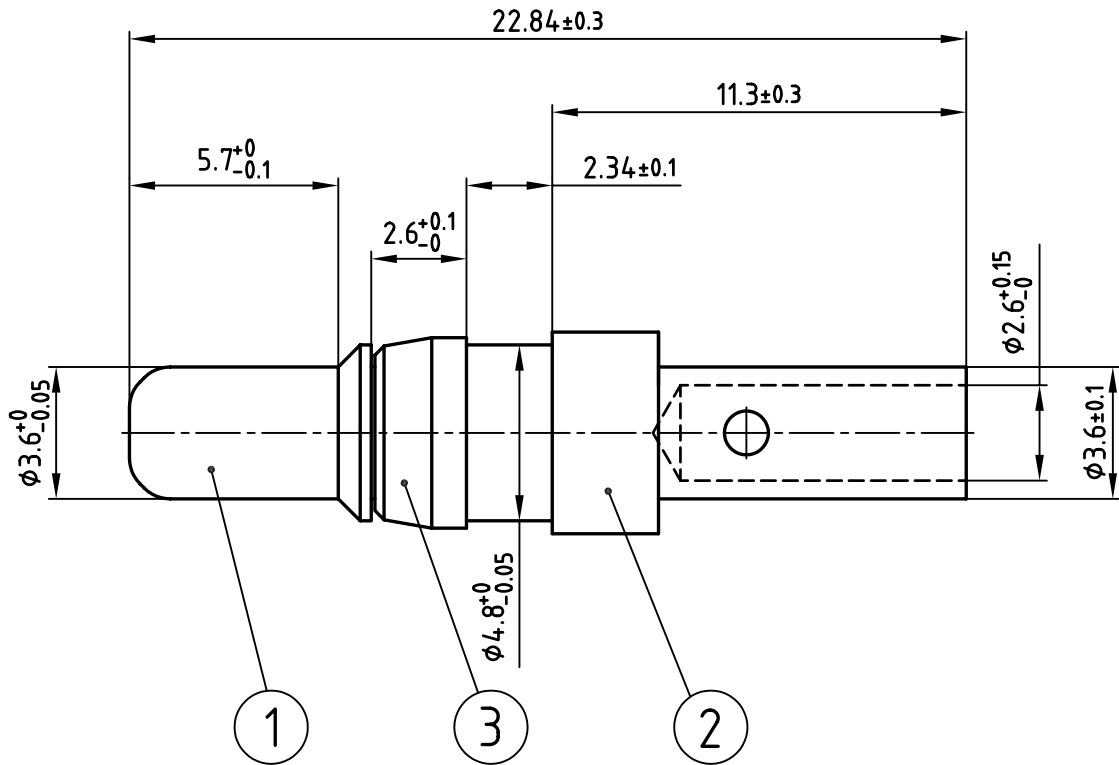


used for: D-SUB COMBINATION



**NOTES:**

1. MATERIAL: COPPER ALLOY
2. PLATING:  
 ITEM 1: min. 30µ" HARD GOLD OVER min. 50µ" NICKEL  
 ITEM 2: min. 8µ" HARD GOLD OVER min. 50µ" NICKEL  
 ITEM 3: NICKEL PLATED



THIS DRAWING MAY NOT BE COPIED OR REPRODUCED IN ANY WAY, AND MAY NOT BE PASSED ON TO A THIRD PARTY WITHOUT WRITTEN PERMISSION.  
 OWNERSHIP AND COPYRIGHT OF CONEC GmbH  
 DO NOT ALTER CAD DRAWING BY HAND

			tolerance		
1998	date	name			
drawn	23.03.	Barcinski			
appd.	23.03.	Mickenbecker			
norm					
d-old					
rev.	description	date			

scale:	5:1
material:	SEE NOTES
title: <b>HIGH POWER CONTACT MALE</b> CRIMP VERSION 20A D-SUB COMBINATION	
dwg no:	AutoCAD/REL.13
part no: <b>131C11029X</b>	
DIN-A 4 sh: 1/1	