

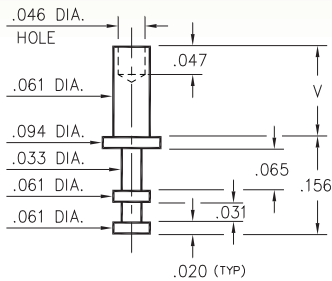
# MALE PCB PINS

## SOLDER TERMINAL TURRETS

### 2348

2348-X-00-XX-00-00-07-0

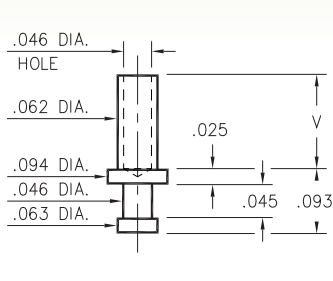
Swage mount in .064 hole



### 2301

2301-X-00-XX-00-00-07-0

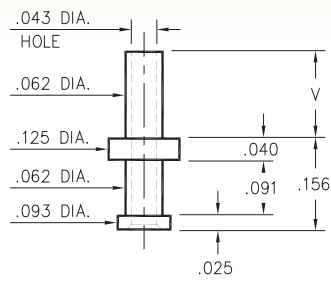
Swage mount in .067 hole



### 2506

2506-X-00-XX-00-00-07-0

Swage mount in .067 hole

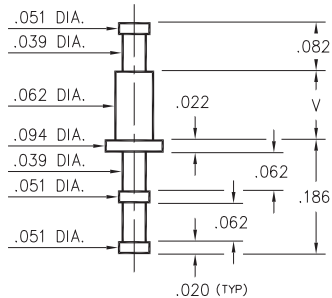


Basic Part Number	Board Thickness	Length V
2XXX-1	.031	.053
2XXX-2	.062	.084
2XXX-3	.094	.115
2XXX-4	.125	.147

### 2310

2310-X-00-XX-00-00-07-0

Swage mount in .067 hole

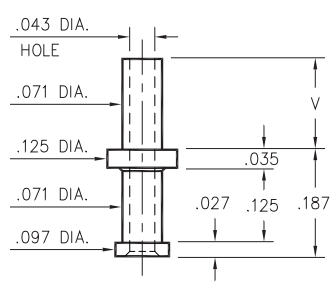


Basic Part Number	Board Thickness	Length V
2310-1	.031	.053
2310-2	.062	.082
2310-3	.094	.113
2310-4	.125	.145

### 2505

2505-X-00-XX-00-00-07-0

Swage mount in .076 hole

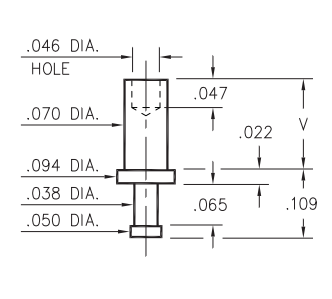


Basic Part Number	Board Thickness	Length V
2505-1	.031	.062
2505-2	.062	.093
2505-3	.094	.125
2505-4	.125	.156

### 2325

2325-X-00-XX-00-00-07-0

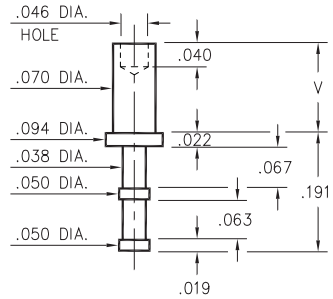
Swage mount in .073 hole



### 2355

2355-X-00-XX-00-00-07-0

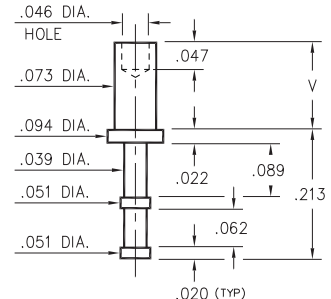
Swage mount in .073 hole



### 2365

2365-X-00-XX-00-00-07-0

Swage mount in .076 hole



Basic Part Number	Board Thickness	Length V
23X5-1	.031	.053
23X5-2	.062	.084
23X5-3	.094	.115
23X5-4	.125	.147

#### SPECIFICATIONS:

**Pin Material:** Brass Alloy 360, 1/2 Hard  
(Swage pins are annealed)

**Dimensions:** Inches

**Tolerances On:** Lengths: ±.005  
Diameters: ±.002  
Angles: ±2°



ORDER CODE: XXXX - X - 00 - XX - 00 - 00 - 07 - 0

BASIC PART #

SPECIFY PIN FINISH:

- 01 200 μ" TIN/LEAD OVER NICKEL
- ◆ 80 200 μ" TIN OVER NICKEL (RoHS)
- ◆ 44 300 μ" SILVER OVER COPPER (RoHS)
- 50 300 μ" ELECTRO-SOLDER (60/40 SnPb)

