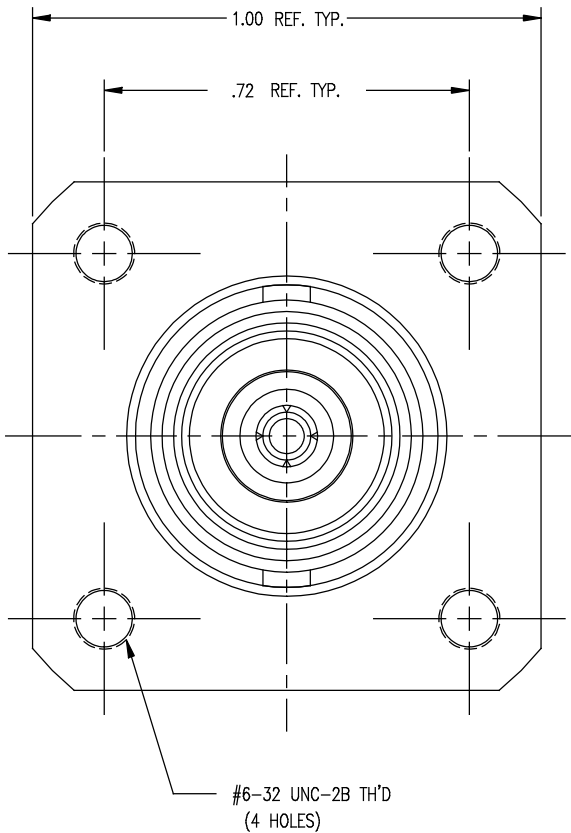
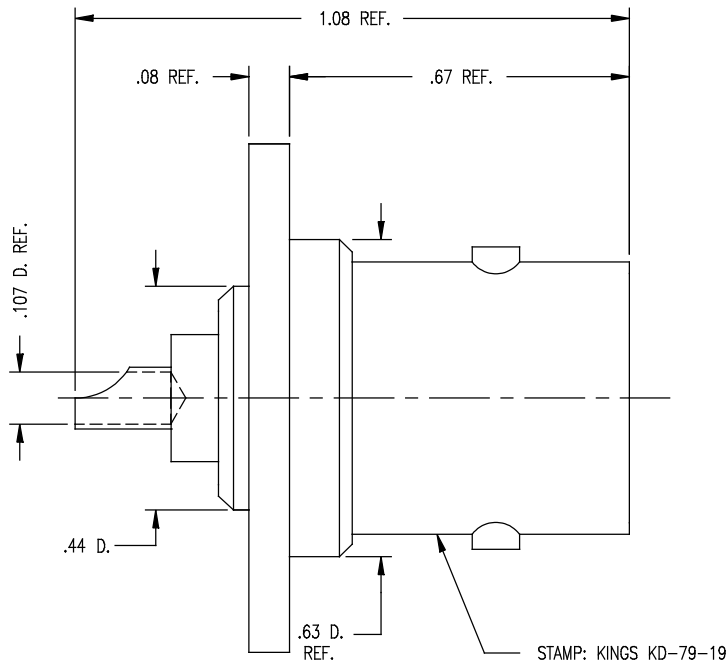


DASH NO.	M CODE	MADE FROM
----------	--------	-----------

GSD



KD-79-19

- NOTES:
- INTERFACE PER MIL-STD-348, FIG. 302-2.
 - MATERIALS:
 - INSULATORS-TEFLON, ASTM-D-1457
 - C-RING-COPPER WIRE QQ-W-336
 - CENTER CONTACT-BER. COP., ASTM-B-196
 - BODY-BRASS, ASTM-B16
 - FINISHES:
 - CENTER CONTACTS } SILVER PLATE PER QQ-S-365
 - C-RING } SILVER PLATE PER QQ-S-365
 - BODY-KINGS TARNISH RESISTANT FINISH (TR-5)
 - ELECTRIAL CHARACTERISTICS:
 - NOMINAL IMPEDANCE-50 OHMS
 - FREQUENCY RANGE-DC TO 11 GHZ
 - WORKING VOLTAGE-1000 VRMS

REVISIONS	
ISSUE	CHANGES
2	CN 33323 C REDRAWN KH 09/12/91
3	CN 33912 C KH 06/11/92

SCALE 4:1	
APPROX SURFACE AREA	
USED ON	
REF:	
RECEPTACLE, PANEL, C	
DRAWN KH	DATE 09/12/91
DESIGN LI	DATE 09/12/91
APPR.	DATE

KINGS
ELECTRONICS CO., INC.
TUCKAHOE, NEW YORK 10707

KD-79-19

GSD