

**PLEASE CHECK WWW.MOLEX.COM FOR LATEST PART INFORMATION**

**Part Number:** [0350092011](#)  
**Status:** **Active**  
**Description:** 1.00mm (.039") Diameter Wire-to-Board Header, Right Angle, Dual Row, 10 Circuits

**Documents:**

[3D Model](#)  
[Drawing \(PDF\)](#)

[RoHS Certificate of Compliance \(PDF\)](#)

**General**

Product Family	PCB Headers
Series	<a href="#">35009</a>
Application	Wire-to-Board
Product Name	N/A

**Physical**

Breakaway	No
Circuits (Loaded)	10
Circuits (maximum)	10
Color - Resin	Natural
Durability (mating cycles max)	50
First Mate / Last Break	No
Glow-Wire Compliant	No
Guide to Mating Part	No
Keying to Mating Part	None
Lock to Mating Part	None
Material - Plating Mating	Tin
Material - Plating Termination	Tin
Material - Resin	Polyester
Number of Rows	2
Orientation	Right Angle
PC Tail Length (in)	0.126 In
PC Tail Length (mm)	3.20 mm
PCB Locator	No
PCB Retention	Yes
PCB Thickness Recommended (in)	0.062 In
PCB Thickness Recommended (mm)	1.60 mm
Packaging Type	Bag
Pitch - Mating Interface (in)	0.118 In
Pitch - Mating Interface (mm)	3.00 mm
Plating min: Mating (µin)	100
Plating min: Mating (µm)	2.5
Plating min: Termination (µin)	100
Plating min: Termination (µm)	2.5
Polarized to PCB	Yes
Shrouded	Partial
Stackable	No
Temperature Range - Operating	-40°C to +120°C
Termination Interface: Style	Through Hole

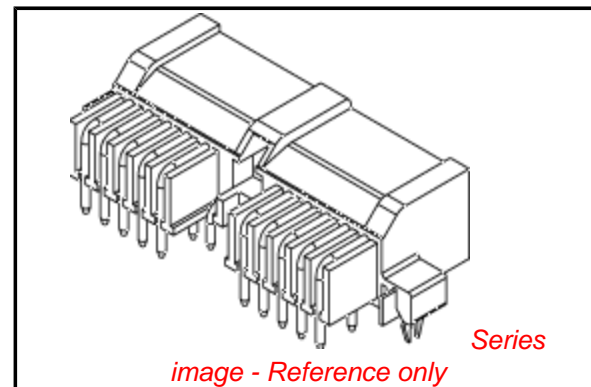
**Electrical**

Current - Maximum per Contact	6A
Voltage - Maximum	300V

**Material Info**

**Reference - Drawing Numbers**

Sales Drawing	SD-35009-2011
---------------	---------------



**EU RoHS**

**ELV and RoHS  
Compliant**  
**REACH SVHC**  
 Not Reviewed  
**Halogen-Free  
Status**  
 Not Reviewed

**China RoHS**



**Need more information on product  
environmental compliance?**

Email [productcompliance@molex.com](mailto:productcompliance@molex.com)  
 For a multiple part number RoHS Certificate of  
 Compliance, [click here](#)

Please visit the [Contact Us](#) section for any  
 non-product compliance questions.

**Search Parts in this Series**

[35009Series](#)

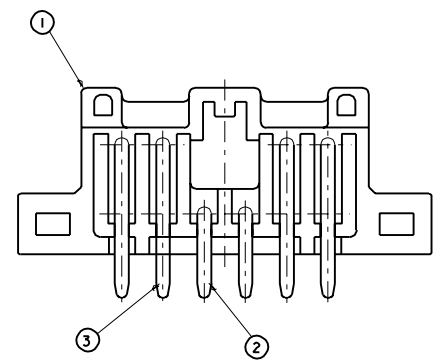
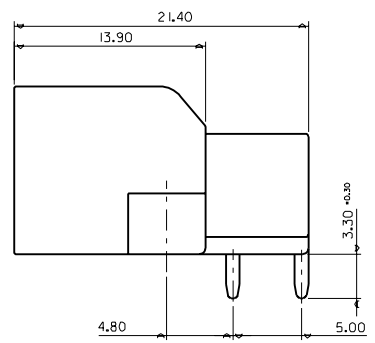
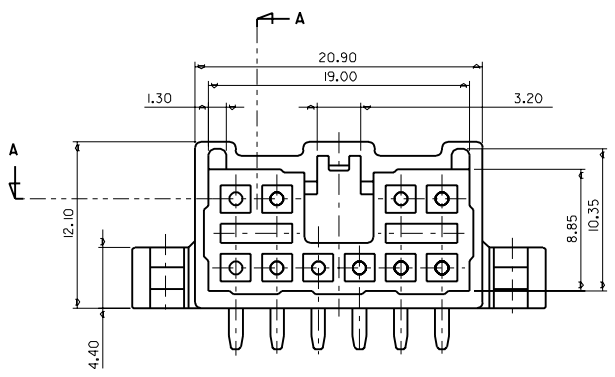
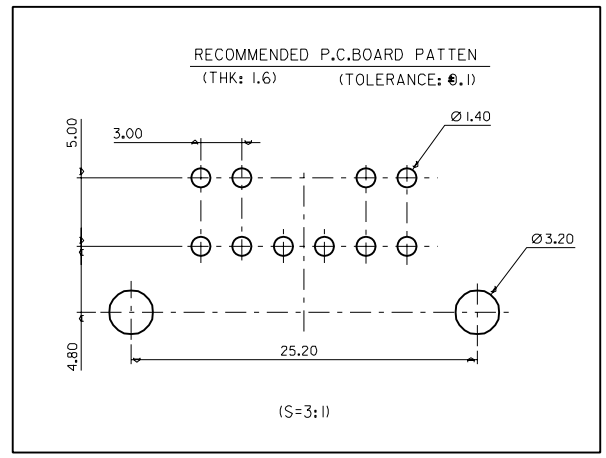
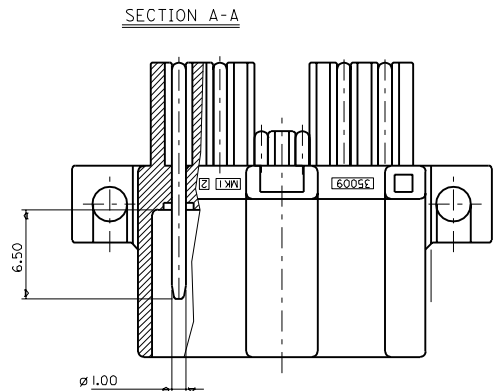
**Mates With**

Wire-to-Board Receptacle Housing [35200](#) ,  
[35509](#)

This document was generated on 04/13/2010

**PLEASE CHECK [WWW.MOLEX.COM](http://WWW.MOLEX.COM) FOR LATEST PART INFORMATION**

DWG. NO. SD35009-2011  
 PROJECT NO. SIMILAR ITEM  
 PROJECT NO. SIMILAR ITEM  
 DO NOT SCALE DRAWING DIMENSION IN METRIC



NO.	P/NAME	P/NO.	MATERIAL	FINISH	QTY.
1	HEADER 10P	35009-0011	SEE NOTE	NATURAL	1
2	1.0 CIRCULOCK PIN (S)	35009-1001	BRASS	TIN-PLATING	6
3	1.0 CIRCULOCK PIN (L)	35009-1101	BRASS	TIN-PLATING	4

NOTE

- 1. MATERIAL : POLYESTER UL94V-0
- 2. FINISH: NATURAL
- 3. APPLICATION: SD35200-1000(F/HSG 10P)

EC NO. DRWN: CHK: APPR:	DESCRIPTION MAJOR CRITICAL C	QUALITY SYMBOLS		GENERAL TOLERANCES: (UNLESS SPECIFIED)		SCALE	DESIGN UNITS	THIRD ANGLE PROJECTION	DIMENSIONS:		SHT	REV		
		mm	INCH	mm	INCH	mm	INCH	mm	INCH	mm	INCH	mm	INCH	
		4 PLACES	±0.	±.	3 PLACES	±0.	±.	2 PLACES	±0.2	±.	1 PLACE	±0.3	±.	DRAWN BY & DATE H.C.RHO 98.06.24
		ANGULAR: ± °		DRAFT WHERE APPLICABLE MUST REMAIN WITHIN DIMENSIONS		APPROVED BY & DATE		CAD FILENAME		MATERIAL NO. SEE NOTE		DRAWING NO. SD35009-2011		SHEET NO. 1 OF 1
THIS DRAWING CONTAINS INFORMATION THAT IS PROPRIETARY TO MOLEX INCORPORATED AND SHOULD NOT BE USED WITHOUT WRITTEN PERMISSION.												SIZE B		

**MOLEX INCORPORATED KOREA**