

## Han® 6 HPR HBM Rear-fit

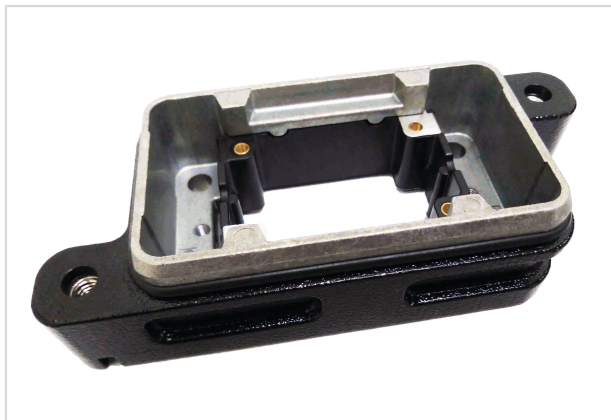


Image is for illustration purposes only. Please refer to product description.

Part number	09 40 006 0391
Specification	Han® 6 HPR HBM Rear-fit
HARTING eCatalogue	<a href="https://b2b.harting.com/09400060391">https://b2b.harting.com/09400060391</a>

### Identification

Category	Hoods/Housings
Series of hoods/housings	Han® HPR
Type of hood/housing	Bulkhead mounted housing
Description of hood/housing	Rear mounting

### Version

Locking type	Screw locking
Size	6 B
Field of application	Hoods/housings for harsh outdoor environments
Pack contents	Mounting frame is included within the delivery

### Technical characteristics

Tightening torque (screw locking)	4 Nm
Limiting temperature	-40 ... +125 °C
Degree of protection acc. to IEC 60529	IP65 IP68 IP69 / IPX9K acc. to ISO 20653
Type rating acc. to UL 50 / UL 50E	4 4X 12

### Material properties

Material (hood/housing)	Aluminium die-cast Corrosion resistant
Surface (hood/housing)	Powder-coated



Pushing Performance

## Material properties

Colour (hood/housing)	RAL 9005 (jet black)
Material (seal)	NBR

## Specifications and approvals

Approvals	DNV GL
UL / CSA	UL 1977 ECBT2.E235076 CSA-C22.2 No. 182.3 ECBT8.E235076
CE	Yes

## Commercial data

Packaging size	1
Country of origin	China
European customs tariff number	85389099
eCl@ss	27440202 Shell for industrial connectors