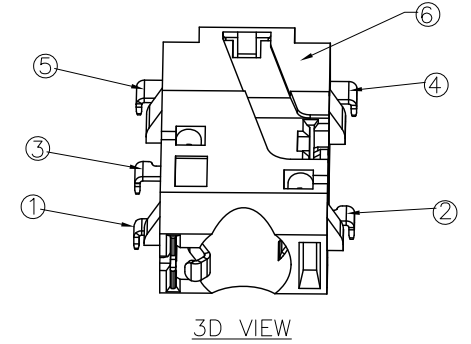
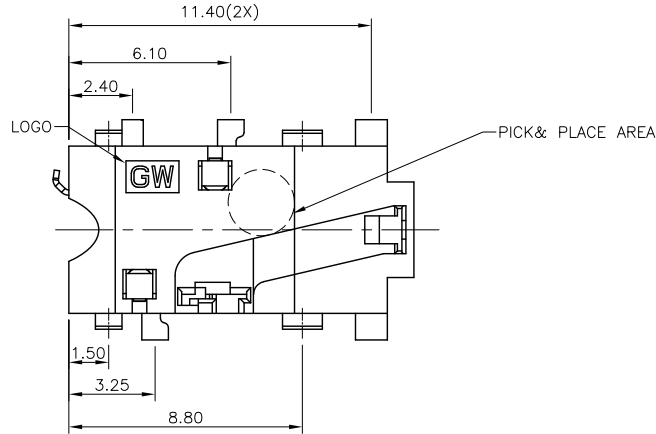
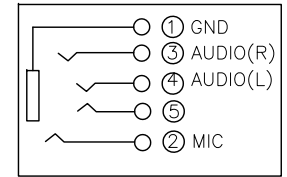
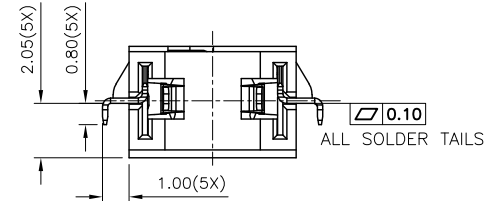
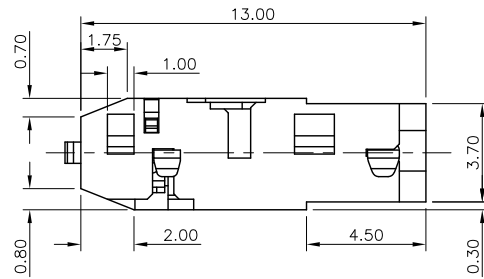
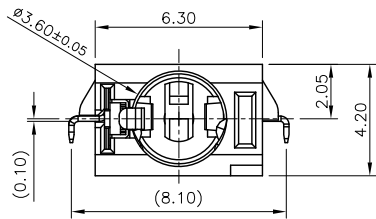


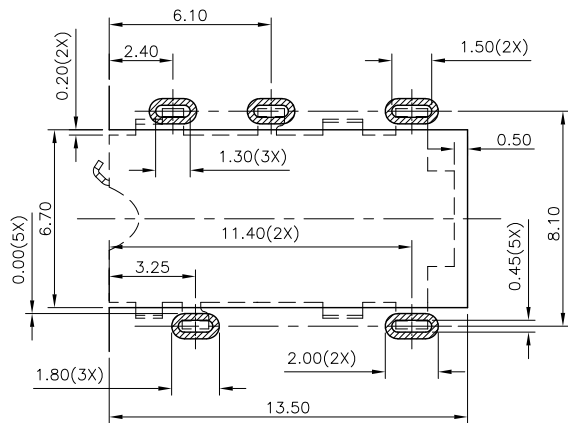
($\phi 3.50\text{mm}$ 4 POLE PLUG DETAIL DRAWING)



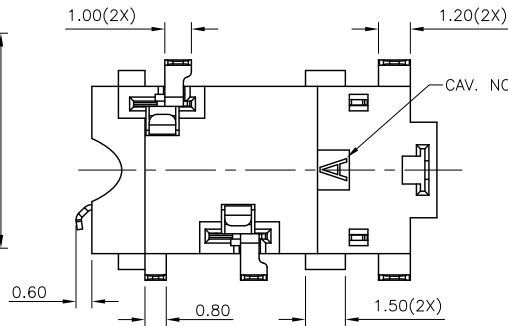
3D VIEW



SCHEMATIC



RECOMMENDED PCB LAYOUT
TOP VIEW TOL: ± 0.05



NOTES:

1. CONTACT CURRENT RATING: 1A.
2. CONTACT RESISTANCE: 50 m Ω MAX.;
3. INSULATION RESISTANCE: 100M Ω MIN.;
4. DIELECTRIC WITHSTANDING: 500V AC MIN.;
5. DURABILITY: 5,000 CYCLES MIN.;
6. CONNECTOR MATING FORCES: 2.94~29.4N (0.30~3.00Kgf);
7. CONNECTOR UNMATING FORCES: 2.94~29.4N (0.30~3.00Kgf);
8. PRODUCT MEET THE REQUEST OF THE RoHs, SEE TABLE A:



G-Switch Electronic (HongKong) CO.,Ltd.

Unless otherwise specified, Tolerance:
 X. ± 0.30
 X.x ± 0.20
 X.xx ± 0.15
 X.xxx ± 0.10
 Angles $\pm 3^\circ$

DESIGN Bright Lee	DATE 2016.05.29
CHECKED	DATE
APPROVED	DATE
http://www.dg-switch.com	
TEL:0769-82388879	

Molde code:		
ST-0277D00-052-142		
REV.: X1	SCALE: 4:1	UNIT: mm
SIZE: A4	SHEET: 1/1	