

**PLEASE CHECK WWW.MOLEX.COM FOR LATEST PART INFORMATION**

**Part Number:** [0918139009](#)  
**Status:** **Active**  
**Overview:** [kk](#)  
**Description:** 5.08 (.200") Pitch, KK®, CRP Terminal HSG, Glow Wire compatible, 9 Circuits, White, Glow Wire Compatible

**Documents:**

[3D Model](#) [RoHS Certificate of Compliance \(PDF\)](#)  
[Drawing \(PDF\)](#)

**General**

Product Family	Crimp Housings
Series	<a href="#">91813</a>
Overview	<a href="#">kk</a>
Product Name	KK®

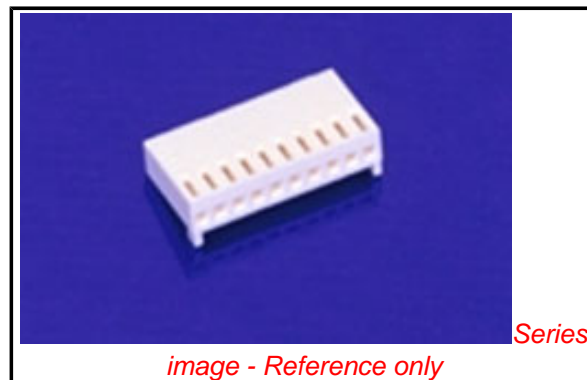
**Physical**

Breakaway	No
Circuits (maximum)	9
Color - Resin	Natural (White)
Gender	Female
Glow-Wire Compliant	Yes
Material - Resin	Nylon
Number of Rows	1
Packaging Type	Bag
Panel Mount	No
Pitch - Mating Interface (in)	0.200 In
Pitch - Mating Interface (mm)	5.08 mm
Pitch - Term. Interface (in)	0.200 In
Pitch - Term. Interface (mm)	5.08 mm
Polarized to Mating Part	Yes
Ports	1
Stackable	No
Temperature Range - Operating	0°C to +75°C

**Material Info**

**Reference - Drawing Numbers**

Sales Drawing	SD-91813-001
---------------	--------------



*image - Reference only*

**EU RoHS**  
**ELV and RoHS**  
**Compliant**  
**REACH SVHC**  
 Not Reviewed  
**Halogen-Free**  
**Status**  
**Not Reviewed**

**China RoHS**

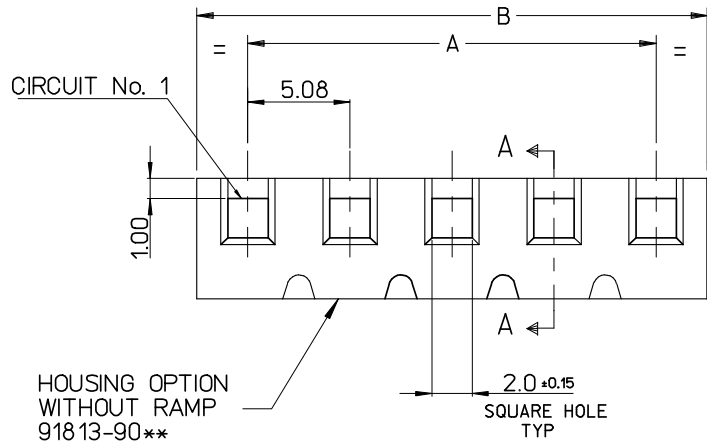


**Need more information on product environmental compliance?**

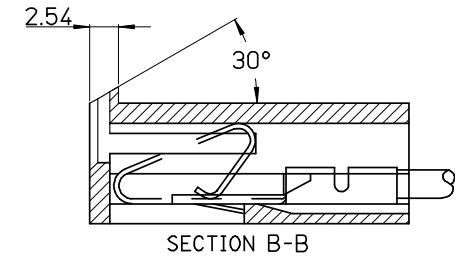
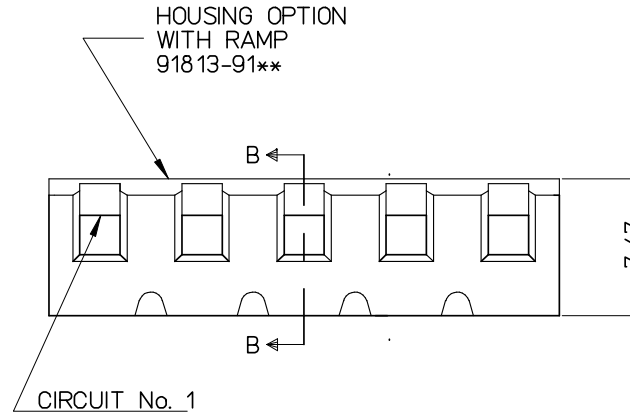
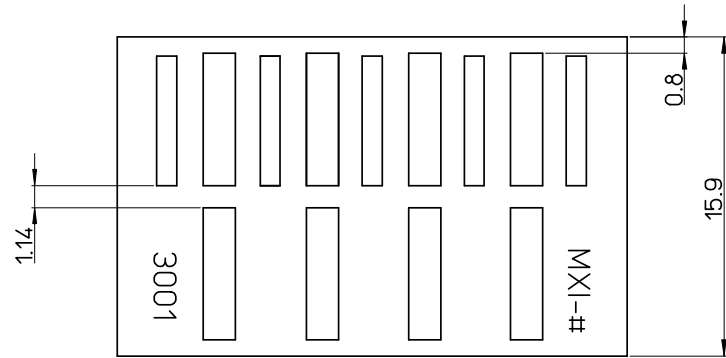
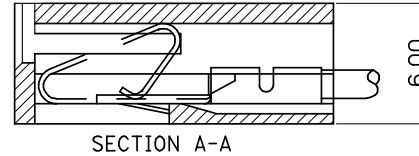
Email [productcompliance@molex.com](mailto:productcompliance@molex.com)  
 For a multiple part number RoHS Certificate of Compliance, [click here](#)

Please visit the [Contact Us](#) section for any non-product compliance questions.

**Search Parts in this Series**  
[91813Series](#)



1.14 REF. ROUND OR SQUARE PIN.



20	91813-9020	91813-9120	96.52 ± .3	101.60 <sup>+0</sup> / <sub>-0.4</sub>
19	▲ -9019	▲ -9119	91.44 ± 0.3	96.52 <sup>+0</sup> / <sub>-0.4</sub>
18	-9018	-9118	86.36 ± 0.3	91.44 <sup>+0</sup> / <sub>-0.4</sub>
17	-9017	-9117	81.28 ± 0.3	86.36 <sup>+0</sup> / <sub>-0.4</sub>
16	-9016	-9116	76.20 ± 0.25	81.28 <sup>+0</sup> / <sub>-0.4</sub>
15	-9015	-9115	71.12 ± 0.25	76.20 <sup>+0</sup> / <sub>-0.4</sub>
14	-9014	-9114	66.04 ± 0.25	71.12 <sup>+0</sup> / <sub>-0.4</sub>
13	-9013	-9113	60.96 ± 0.25	66.04 <sup>+0</sup> / <sub>-0.4</sub>
12	-9012	-9112	55.88 ± 0.25	60.96 <sup>+0</sup> / <sub>-0.4</sub>
11	-9011	-9111	50.80 ± 0.20	55.88 <sup>+0</sup> / <sub>-0.4</sub>
10	-9010	-9110	45.72 ± 0.20	50.80 <sup>+0</sup> / <sub>-0.4</sub>
9	-9009	-9109	40.64 ± 0.20	45.72 <sup>+0</sup> / <sub>-0.4</sub>
8	-9008	-9108	35.56 ± 0.20	40.64 <sup>+0</sup> / <sub>-0.4</sub>
7	-9007	-9107	30.48 ± 0.20	35.56 <sup>+0</sup> / <sub>-0.4</sub>
6	-9006	-9106	25.40 ± 0.10	30.48 <sup>+0</sup> / <sub>-0.4</sub>
5	-9005	-9105	20.32 ± 0.10	25.40 <sup>+0</sup> / <sub>-0.15</sub>
4	-9004	-9104	15.24 ± 0.10	20.32 <sup>+0</sup> / <sub>-0.15</sub>
3	▼ -9003	▼ -9103	10.16 ± 0.10	15.24 <sup>+0</sup> / <sub>-0.15</sub>
2	91813-9002	91813-9102	5.08 ± 0.10	10.16 <sup>+0</sup> / <sub>-0.15</sub>
			A	B
			DIMENSION	

NOTE:

1. MATERIAL: POLAMIDE (PA6), UL-94 V-2  
COLOUR WHITE
2. THIS HOUSING USES KK TERM. No's. 2478, 2578 & 2878
3. COLOUR VARIATION MAY BE VISIBLE ON THE HOUSING SURFACES
4. PRODUCT SPECIFICATION: PS-99020-0087

ADDED PROD. SPEC EC NO: E2008-0301 DRWN: ILK/ERNAN 2008/02/04 CHKD: 2008/02/06 APPR: BMAGUIRE 2008/02/07	QUALITY SYMBOLS = 0 = 0	GENERAL TOLERANCES (UNLESS SPECIFIED)		DIMENSION STYLE MM ONLY		SCALE 7:1	DESIGN UNITS METRIC	THIRD ANGLE PROJECTION		
		4 PLACES ± ---	± ---	mm	INCH	DRAWN BY DWASZKIEWICZ	DATE 2006/06/08	TITLE 5.08MM KK CRP TERM HSG GLOW WIRE COMPATIBLE		
		3 PLACES ± ---	± ---			CHECKED BY J. DENNEHY	DATE	MOLEX INCORPORATED		
		2 PLACES ± 0.25	± ---			APPROVED BY J. DENNEHY	DATE	DOCUMENT NO. SD-91813-001		
		1 PLACE ± 0.35	± ---	ANGULAR ± 1/2°		MATERIAL NO. SEE CHART		SHEET NO. 1 OF 1		
DRAFT WHERE APPLICABLE MUST REMAIN WITHIN DIMENSIONS				SIZE A3		THIS DRAWING CONTAINS INFORMATION THAT IS PROPRIETARY TO MOLEX INCORPORATED AND SHOULD NOT BE USED WITHOUT WRITTEN PERMISSION				