

**PLEASE CHECK WWW.MOLEX.COM FOR LATEST PART INFORMATION**

**Part Number:** [5013300200](#)  
**Status:** **Active**  
**Overview:** [picoclasp](#)  
**Description:** 1.00mm (.039") Pitch Pico-Clasp™ Wire-to-Board Female Housing, Single Row, with Friction Lock, 2 Circuits

**Documents:**

[3D Model](#) [Product Specification PS-501331-001 \(PDF\)](#)  
[Drawing \(PDF\)](#) [RoHS Certificate of Compliance \(PDF\)](#)

**General**

Product Family Crimp Housings  
 Series [501330](#)  
 Overview [picoclasp](#)  
 Product Name Pico-Clasp™

**Physical**

Circuits (maximum) 2  
 Color - Resin White  
 Gender Female  
 Glow-Wire Compliant No  
 Lock to Mating Part Yes  
 Material - Resin Nylon  
 Number of Rows 1  
 Packaging Type Bag  
 Panel Mount No  
 Pitch - Mating Interface (in) 0.039 In  
 Pitch - Mating Interface (mm) 1.00 mm  
 Polarized to Mating Part Yes  
 Stackable No  
 Temperature Range - Operating -40°C to +85°C

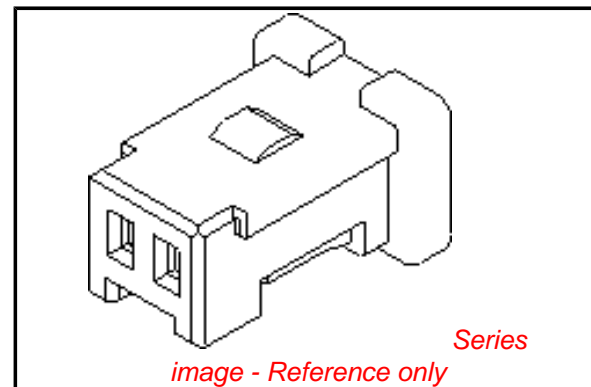
**Electrical**

Current - Maximum per Contact 1A

**Material Info**

**Reference - Drawing Numbers**

Packaging Specification SPK-501330-001  
 Product Specification PS-501331-001, RPS-501331-001, RPS-501331-002, RPS-501331-003, RPS-501331-006, RPS-501331-007, RPS-501331-008, RPS-501568-002, RPS-501568-008  
 Sales Drawing SD-501330-001



**EU RoHS**

**ELV and RoHS Compliant**  
**REACH SVHC**  
 Not Reviewed  
**Halogen-Free Status**  
**Not Reviewed**

**China RoHS**



**Need more information on product environmental compliance?**

Email [productcompliance@molex.com](mailto:productcompliance@molex.com)  
 For a multiple part number RoHS Certificate of Compliance, [click here](#)

Please visit the [Contact Us](#) section for any non-product compliance questions.

**Search Parts in this Series**

[501330Series](#)

**Mates With**

[501331 PCB Header](#) . [501568 PCB Header](#)

**Use With**

[501334 Crimp Terminal](#)

10 9 8 7 6 5 4 3 2 1

F

E

D

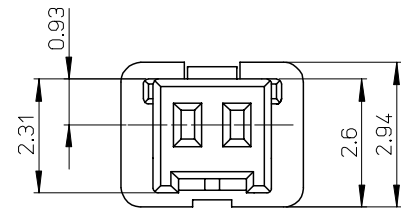
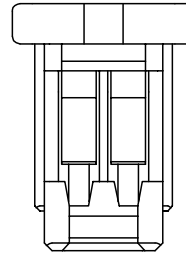
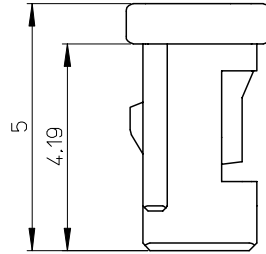
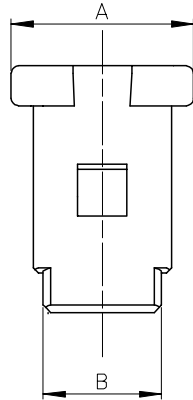
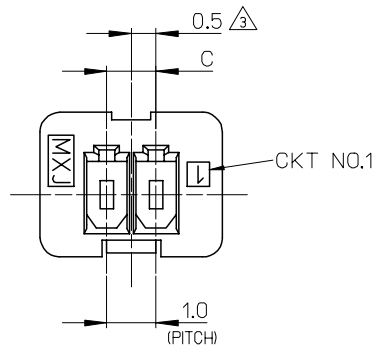
C

B

A

NOTES.

1. 適合ターミナル: 501334-\*\*\*\*  
APPLICABLE TERMINAL: 501334-\*\*\*\*
2. 嵌合相手: 501331-\*\*\*\*  
MATE WITH: 501331-\*\*\*\*
- △ 3. 偶数極に適用  
APPLY FOR EVEN CIRCUIT SIZE
4. 6-15極は、SD-501330-002を参照下さい。  
REFER TO SD-501330-002 ABOUT 6-15CKT.



※対応可能な極数は、別途お問い合わせ下さい。

4.0	5.4	6.7	501330-0500	5	501330-xx00
3.0	4.4	5.7	501330-0400	4	
2.0	3.4	4.7	501330-0300	3	
1.0	2.4	3.7	501330-0200	2	
C	B	A	MATERIAL NO.	CKT.	MODEL NO.

材料  
MATERIAL  
66ナイロン 色:白  
66NYLON COLOR:WHITE  
ガラス無充填  
GLASS FILLED : 0%  
UL94V-0

REVISED	DESCRIPTION
EC NO: J2005-1980	2005/01/18
DRWN: NYOSHIDA	2005/01/19
CHKD: MYAGI	2005/01/26
APPR: ANODA	
A	REV

GENERAL TOLERANCES  
(UNLESS SPECIFIED)

10 UNDER	±0.2
10 OVER 30 UNDER	±0.25
30 OVER	±0.3
ANGULAR	±3 °

DRAFT WHERE APPLICABLE  
MUST REMAIN  
WITHIN DIMENSIONS

DIMENSION STYLE  
MM ONLY

DRAWN BY	DATE
NYOSHIDA	2004/07/30
CHECKED BY	DATE
MYAGI	2004/07/30
APPROVED BY	DATE
MIYAZAWA	2004/07/30
MATERIAL NO.	
SIZE	A3

SEE CHART

SCALE 10:1

DESIGN UNITS METRIC

THIRD ANGLE PROJECTION

TITLE  
1.0 WIRE TO BOARD CONN.  
1-ROW RECEPTACLE HOUSING  
2-5CKT.

MOLEX MOLEX INCORPORATED

DOCUMENT NO. SD-501330-001

SHEET NO. 1 OF 1

THIS DRAWING CONTAINS INFORMATION THAT IS PROPRIETARY TO MOLEX INCORPORATED AND SHOULD NOT BE USED WITHOUT WRITTEN PERMISSION

9

8

7

6

5

4

3

2