

# NEW

# Calibrated Xenon Light Source L7810



▲LEFT: LAMP HOUSING, RIGHT: POWER SUPPLY

**JCSS**  
0081

is a logo mark for an accreditation system based on Japanese Measurement Law. Our Planning & Engineering Division is accredited in accordance with ISO/IEC Guide 25: 1990 in the field of photometry calibration.

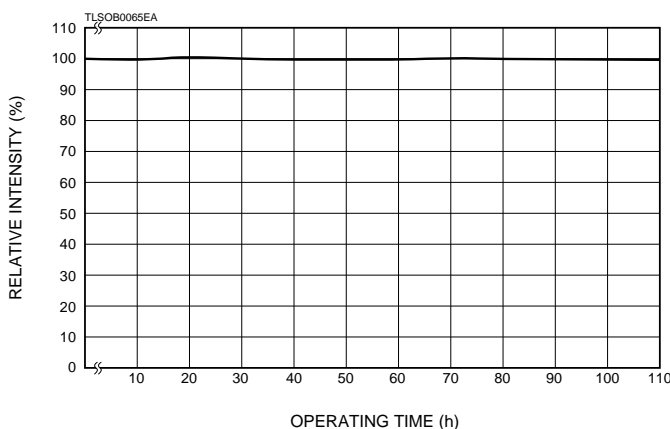
(Our accreditation number is 0081.)  
[JCSS: Japan Calibration Service System (The Japanese Government accreditation scheme for calibration laboratories and a signatory of APLAC Mutual Recognition Arrangement)]

## FEATURES

### ■High Stability

Stability is one of the important characteristics of calibrated light sources. Hamamatsu's excellent cathode technology and optimized lamp housing realize high stability and good repeatability.

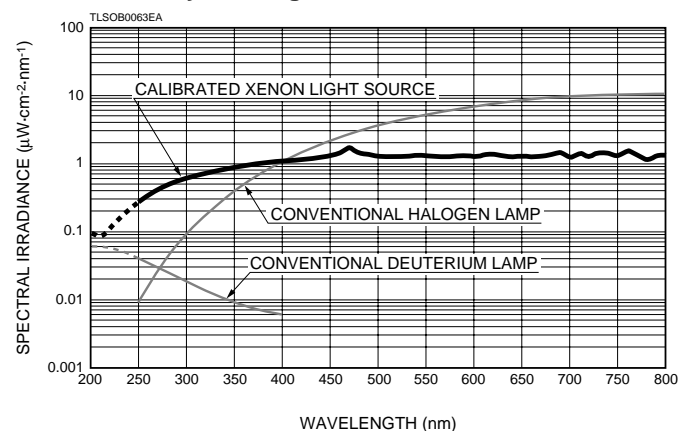
### ●Light Intensity Drift (Typ.)



### ■High Power

A Xenon lamp emits high intense UV, visible and IR light so that a reliable measurement can be possible even in the range of 300 nm to 400 nm, where either a deuterium lamp or a tungsten lamp doesn't deliver enough light.

### ●Comparison of Spectral Irradiance (Reference data) : 50 cm away from light source



# HAMAMATSU

# SPECIFICATIONS

Lamp	Xenon Lamp	Input Voltage (switched manually)	100 Vac/115 Vac/200 Vac/230 Vac (±10 %), 50/60 Hz
Input Wattage	150 W	Power Consumption	500 VA
Spectral Distribution	185 nm to 2000 nm	Cooling (Lamp Housing, Power Supply)	Forces Air Cooling (cooling fan is included)
Calibrated Range <sup>(A)</sup>	250 nm to 800 nm	Ambient Temperature	0 °C to 40 °C
Type of Calibration	Spectral Irradiance	Humidity	30 % to 90 %
Calibration Unit	$\mu\text{W}\cdot\text{cm}^{-2}\cdot\text{nm}^{-1}$	Dimensions (W × H × D)	Lamp Housing 100 mm × 280 mm × 100 mm Power Supply 144 mm × 176 mm × 280 mm Case <sup>(D)</sup> 595 mm × 425 mm × 345 mm
Stability	Fluctuation (p-p) 1.0 % Max. Drift ±0.5 %/h Max.	Weight	Lamp Housing Approx. 3.5 kg Power Supply Approx. 10 kg Case <sup>(D)</sup> Approx. 7.8 kg
Window Material (Lamp Housing)	Synthetic Silica		
Warm-up Time	10 min		
Recommended Calibration Period <sup>(B)</sup>	100 hours or 1 year whichever comes first		
Guaranteed Life <sup>(C)</sup>	500 hours		

**NOTE:** (A) The calibrated value is the light power at 50 cm away from front surface of lamp housing.

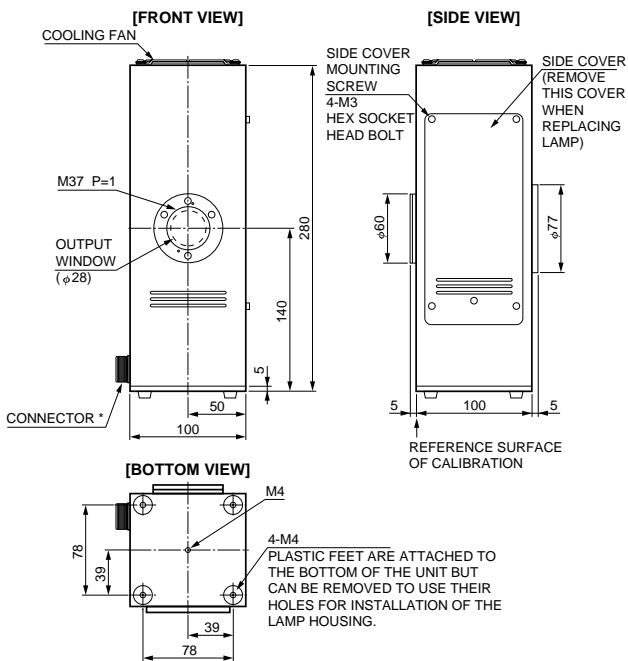
(B) This is the recommended calibration period when high reliability is required. Please contact to our sales office for re-calibration fee.

(C) This is the guaranteed time the unit satisfies requirements as calibrated light source.

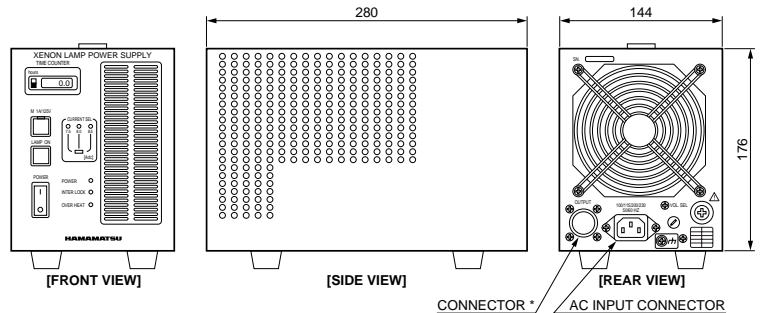
(D) This is an accessory coming with the unit.

# DIMENSIONAL OUTLINES (Unit: mm)

## LAMP HOUSING



## POWER SUPPLY



\* For cable to connect lamp housing with power supply, length: 2000

TLSOA0066EA

TLSOA0067EA

Subject to local technical requirements and regulations, availability of products included in this promotional material may vary. Please consult with our sales office.

Information furnished by HAMAMATSU is believed to be reliable. However, no responsibility is assumed for possible inaccuracies or omissions. Specifications are subject to change without notice. No patent rights are granted to any of the circuits described herein. ©2000 Hamamatsu Photonics K.K.

# HAMAMATSU

HOME PAGE URL <http://www.hamamatsu.com>

HAMAMATSU PHOTONICS K.K., Electron Tube Center

314-5, Shimokanzo, Toyooka-village, Iwata-gun, Shizuoka-ken, 438-0193, Japan, Telephone: (81)539/62-5248, Fax: (81)539/62-2205

U.S.A.: Hamamatsu Corporation: 360 Foothill Road, P. O. Box 6910, Bridgewater, N.J. 08807-0910, U.S.A., Telephone: (1)908-231-0960, Fax: (1)908-231-1218 E-mail: [usa@hamamatsu.com](mailto:usa@hamamatsu.com)

Germany: Hamamatsu Photonics Deutschland GmbH: Arzbergerstr. 10, D-82211 Herrsching am Ammersee, Germany, Telephone: (49)8152-375-0, Fax: (49)8152-2658 E-mail: [info@hamamatsu.de](mailto:info@hamamatsu.de)

France: Hamamatsu Photonics France S.A.R.L.: 8, Rue du Saule Trapu, Parc du Moulin de Massy, 91882 Massy Cedex, France, Telephone: (33)1 69 53 71 00, Fax: (33)1 69 53 71 10 E-mail: [france@hamamatsu.com](mailto:france@hamamatsu.com)

United Kingdom: Hamamatsu Photonics UK Limited: Lough Point, 2 Gladbeck Way, Windmill Hill, Enfield, Middlesex EN2 7JA, United Kingdom, Telephone: 44(20)8-367-3560, Fax: 44(20)8-367-6384 E-mail: [info@hamamatsu.co.uk](mailto:info@hamamatsu.co.uk)

North Europe: Hamamatsu Photonics Norden AB: Smidesvägen 12, SE-171-41 SOLNA, Sweden, Telephone: (46)8-509-031-00, Fax: (46)8-509-031-01 E-mail: [info@hamamatsu.se](mailto:info@hamamatsu.se)

Italy: Hamamatsu Photonics Italia: S.R.L.: Strada della Moia, 1/E, 20020 Arese, (Milano), Italy, Telephone: (39)02-935 81 733, Fax: (39)02-935 81 741 E-mail: [info@hamamatsu.it](mailto:info@hamamatsu.it)

TLSO1039E01  
JUN. 2000 SI  
Printed in Japan(1000)