

## PIC-MSM-332 Flatpack Magnet

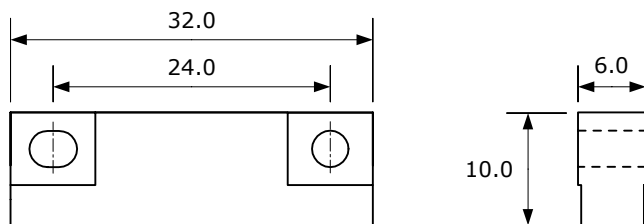
### Data

<b>Housing Material</b>	ABS, black	
<b>Orientation</b>	over housing length	
<b>Remanence Br</b>	mT	1185
<b>Coercivity HcB</b>	kA/m	828
<b>Coercivity HcJ</b>	kA/m	955
<b>Energy Product (BH) max.</b>	kJ/m <sup>3</sup>	275
<b>Magnetic Moment M</b>	x10 <sup>-5</sup> Vs cm	4.30
<b>Operating Temperature max.</b>	°C	85
<b>Temperature Coefficient Tk(Br)</b>	%/°C	-0.12

Nominal values unless otherwise specified

### Dimensions

in mm



**Customized types, other magnet materials and high temperature grades available.**