

PLEASE CHECK WWW.MOLEX.COM FOR LATEST PART INFORMATION

Part Number: [0003061011](#)
Status: **Active**
Overview: [standard_062](#)
Description: 1.57mm (.062") Diameter Standard .062 Pin and Socket Receptacle Housing, 1 Circuits

Documents:

[3D Model](#) [Product Specification PS-02-06 \(PDF\)](#)
[Drawing \(PDF\)](#) [RoHS Certificate of Compliance \(PDF\)](#)
[Packaging Specification \(PDF\)](#)

Agency Certification

CSA LR19980
TUV R72081037
UL E29179

General

Product Family Crimp Housings
Series [1625](#)
Comments Polarized to Mating Part
MolexKits Yes
Overview [standard_062](#)
Product Name Standard .062"

Physical

Breakaway No
Circuits (maximum) 1
Circuits Detail 1
Color - Resin Natural
Flammability 94V-2
Gender Receptacle
Glow-Wire Compliant No
Keying to Mating Part None
Lock to Mating Part Yes
Material - Resin Nylon
Number of Rows 1
Packaging Type Bag
Panel Mount No
Pitch - Mating Interface (in) 0.145 In
Pitch - Mating Interface (mm) 3.68 mm
Pitch - Term. Interface (in) 0.145 In
Pitch - Term. Interface (mm) 3.96 mm
Polarized to Mating Part Yes
Stackable No
Temperature Range - Operating -40°C to +105°C

Electrical

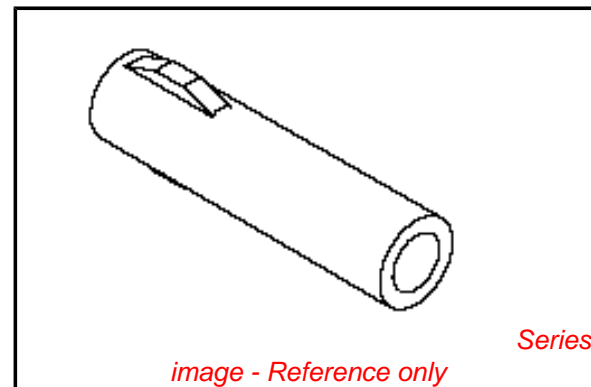
Current - Maximum per Contact 5A

Material Info

Old Part Number 1625-1R

Reference - Drawing Numbers

Packaging Specification PK-1625-001
Product Specification PS-02-06
Sales Drawing SD-1625-1*-* , SD-1625-1R



EU RoHS

**ELV and RoHS
Compliant**
**REACH SVHC
Contains SVHC: No**
**Halogen-Free
Status**

China RoHS



**Need more information on product
environmental compliance?**

Email productcompliance@molex.com
For a multiple part number RoHS Certificate of Compliance, [click here](#)

Please visit the [Contact Us](#) section for any non-product compliance questions.

Search Parts in this Series

[1625Series](#)

Mates With

[1625 Plug](#)

Use With

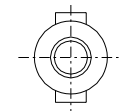
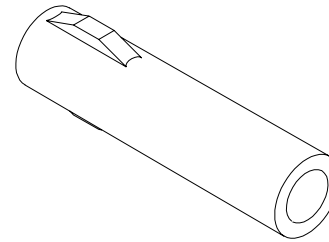
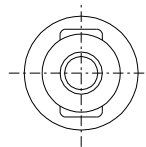
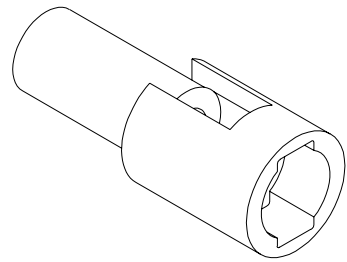
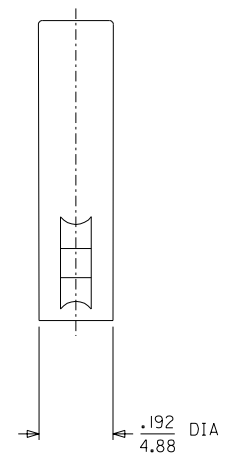
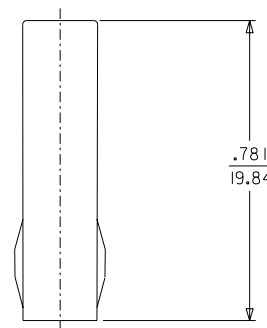
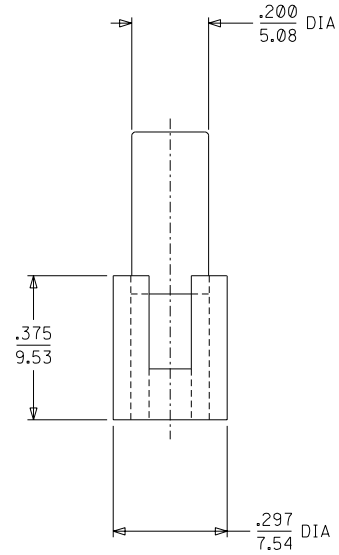
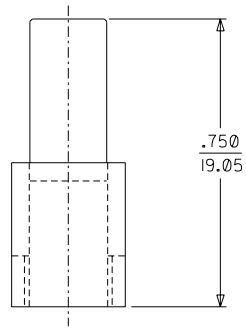
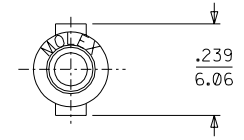
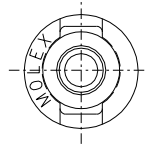
Female Crimp Terminals [1561Link:4559](#)
, [4529](#) , [2190](#) , [2189](#) , [1787](#) , [1855](#) . Male
Crimp Terminals [1560](#) , [1786](#) , [1854](#) . [1778](#)
Male PC Tail Terminals. [1779](#) Female PC
Tail Terminals

This document was generated on 06/07/2010

PLEASE CHECK WWW.MOLEX.COM FOR LATEST PART INFORMATION

PLUG

RECEPTACLE



PLUG HOUSING

RECEPTACLE HOUSING

REDRAWN ON CAD
EC NO. LUCP2003-2578
DRWN: BSYNNOTT 6/10/03
CHK: BWIRKLUS 6/13/03
APPR: BWIRKLUS 6/16/03
REV H

DESCRIPTION
MAJOR
CRITICAL

GENERAL TOLERANCES: (UNLESS SPECIFIED)
4 PLACES ±0.--- ±.
3 PLACES ±0. ±.010
2 PLACES ±0.25 ±.014
1 PLACE ±0.35 ±.
ANGULAR: ± 1°
DRAFT WHERE APPLICABLE MUST REMAIN WITHIN DIMENSIONS

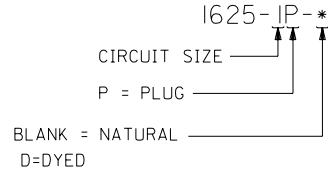
SCALE 4 : 1
DESIGN UNITS <input type="checkbox"/> mm <input checked="" type="checkbox"/> INCH
DRAWN BY & DATE JBS 6/10/03
CHECKED BY & DATE BW 6/13/03
APPROVED BY & DATE BW 6/16/03
CAD FILENAME SD1625IX1.DGN

TITLE: PLUG & RECEPTACLE HOUSINGS I CIRCUIT, .062/(1.57) DIA. SERIES
MATERIAL NO. SEE CHART
DRAWING NO. SD-1625-1*-*

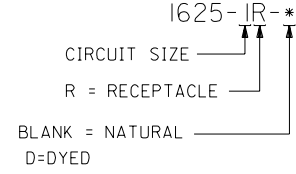
2	H
1	H
SHT	REV
REVISE ON CAD ONLY	
SHEET NO. 1 OF 2	
SIZE C	

	13	12	11	10	9	8	7	6	1625	4	3	2	1
	PLUG		RECEPTACLE										
J	PART NO.	ENG. NO.	PART NO.	ENG. NO.									
	03-06-2011	1625-IP	03-06-1011	1625-IR									
	03-06-7011	1625-IP-D	03-06-6011	1625-IR-D									
I													

PLUG LEGEND:



RECEPTACLE LEGEND:



NOTES:

1. MATERIAL: NYLON, PA66, U.L. 94V-2.
2. FINISH: NONE.
3. PRODUCT SPECIFICATION: PS-02-06.
4. PACKAGING SPECIFICATION: NONE.
5. FOR USE WITH .062 SERIES TERMINALS.

	13	12	11	10	9	8	7	6	5	4	3	2	1							
A									DIMENSIONS SHOWN (METRIC) INCH UNLESS OTHERWISE SPECIFIED TOLERANCES: ANGULAR \pm .05° 10 <table border="1"> <tr> <td>3 PLACE</td> <td>\pm .010</td> <td>---</td> </tr> <tr> <td>2 PLACE</td> <td>\pm .014</td> <td>\pm 0.25</td> </tr> <tr> <td>1 PLACE</td> <td>---</td> <td>\pm 0.35</td> </tr> </table> DRAFT WHERE APPLICABLE MUST REMAIN WITHIN DIMENSIONS	3 PLACE	\pm .010	---	2 PLACE	\pm .014	\pm 0.25	1 PLACE	---	\pm 0.35	REVISIONS LTR.	REVISIONS LTR.
3 PLACE	\pm .010	---																		
2 PLACE	\pm .014	\pm 0.25																		
1 PLACE	---	\pm 0.35																		
									H	SEE SHT. 1	DRWG. BY: JBS	CHK'D. BY: BW	SCALE: 1:1							
											APP'D. BY: BW	SCALE: 1:1	FILE NAME: SD16251X2							
												THIS DRAWING CONTAINS INFORMATION THAT IS PROPRIETARY TO MOLEX INC. AND SHOULD NOT BE USED WITHOUT WRITTEN PERMISSION.	DIV. CP SIZE C							

DIMENSIONS SHOWN (METRIC) INCH
 UNLESS OTHERWISE SPECIFIED
 TOLERANCES: ANGULAR \pm .05° 10

3 PLACE	\pm .010	---
2 PLACE	\pm .014	\pm 0.25
1 PLACE	---	\pm 0.35

 DRAFT WHERE APPLICABLE MUST
 REMAIN WITHIN DIMENSIONS

TITLE: PLUG & RECEPTACLE HOUSINGS
 1 CIRCUIT
 .062/(1.57) DIA. SERIES

FROM: MOLEX INCORPORATED U.S.A.
 LISLE, ILL. 60532

PART NO. SD-1625-1-**-*
 DRWG. NO. SEE CHART

SHEET NO. 2
 DATE 6/10/03

REVISIONS: LTR. REVISIONS LTR.

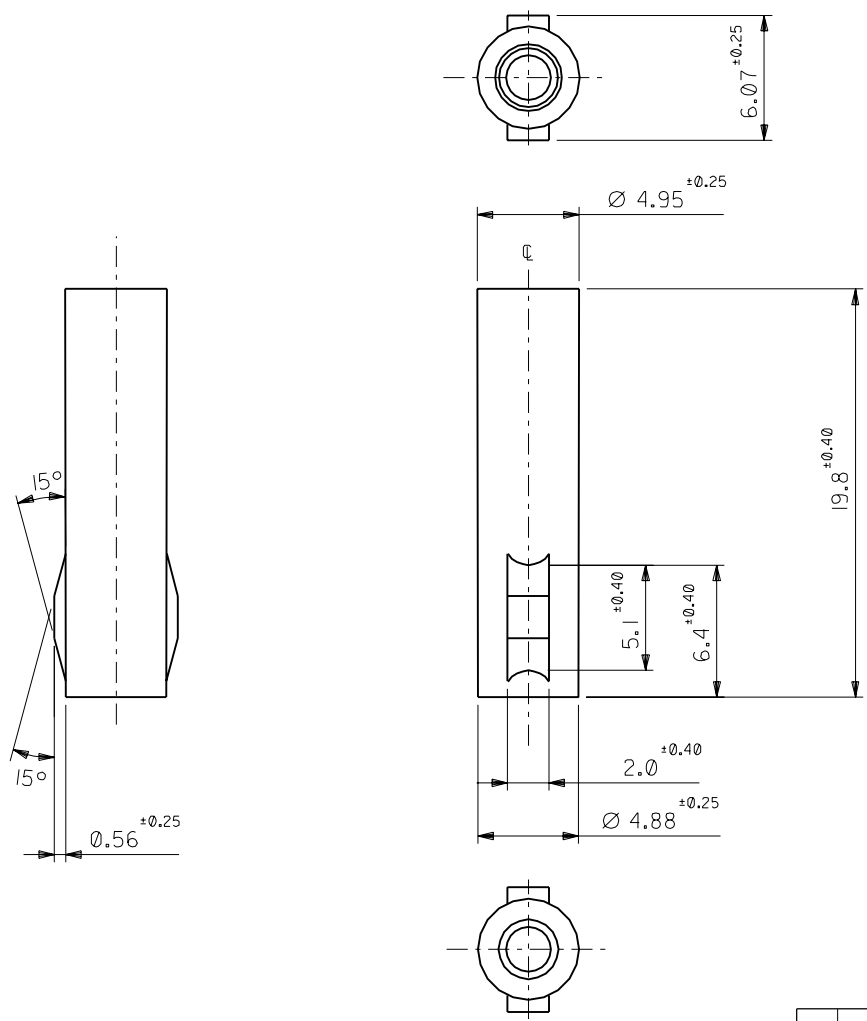
DRWG. BY: JBS
 CHK'D. BY: BW
 APP'D. BY: BW
 SCALE: 1:1

FILE NAME: SD16251X2
 SIZE: CP C

THIS DRAWING CONTAINS INFORMATION THAT IS PROPRIETARY TO MOLEX INC. AND SHOULD NOT BE USED WITHOUT WRITTEN PERMISSION.

DWG. NO. SD-1625-IR

ALL DIMENSIONS IN METRIC DO NOT SCALE DRAWING



注記
NOTE

材質: ナイロン66, 94V-2
MATERIAL: NYLON66, 94V-2

03-06-1011	1625-IR
PART NO.	ENG. NO.

材料 MATERIAL		☑中参照 REFER TO DRAWING	
仕上げ FINISH		—	
適用電線範囲 WIRE RANGE		—	
被覆外径 INS. RANGE		—	
DRAWN BY '96/07/01 H.IIJIMA	CHK'D BY '96/07/01 M.FUKUSHIMA		
APP'D BY '96/07/01 M.ENOMOTO	尺度 SCALE 1:1		
記号 LTR	変更内容 REVISION RECORD	DR. CHK.	日付 DATE
B	再作図 REDRAWN (JC70305)	H.I	'96/07/01
一般公差 GENERAL TOLERANCES			
角度 ANGLE	±30°		
30以上 OVER	±0.3		
10以上 30未満 OVER UNDER	±0.25		
10未満 UNDER	±0.2		

MOLEX-JAPAN CO.,LTD. 日本モレックス株式会社	
REVISE ONLY ON CAD SYSTEM	
TITLE 名称 .062 DIA. 1 CIRCUIT RECEPT. HOUSING	
DWG. NO. SD-1625-IR	REV B