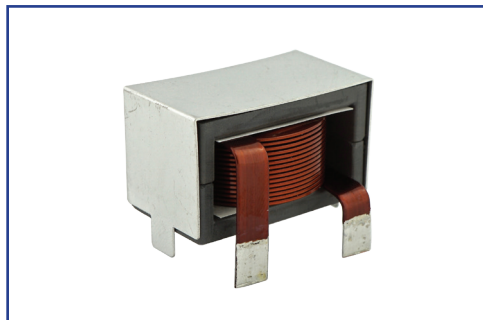


HEW (HELICAL EDGE WOUND) HIGH CURRENT INDUCTOR



HWIA4427H SERIES



- High Current Inductors (inductance range from 1.4 μ H to 45.9 μ H) in a compact size package (45mm x 40mm x 27mm)
- Flat wire coil minimizes losses at high frequency
- Horizontal mount package with mounting clip for added support (vertical mount version also available)
- Operating Temperature -40°C to +150°C
- RoHS Compliant Product
- Custom Design Available

ELECTRICAL PARAMETERS @ 25°C

Part Number	INDUCTANCE (μ H) $\pm 15\%$	I _{rms} (Amp) Typical		DCR (m Ω) Max	I _{sat} (Amp) Typical		Dimensions (mm)	
		20°C Rise	40°C Rise		10% Drop	30% Drop	C	D
HWIA4427-038A-300H	30.6	25	38	4.2	46	82	1.50	8.00
HWIA4427-044A-290H	29.4	29	44	3.0	31	61	1.80	8.00
HWIA4427-044A-190H	19.6	29	44	3.0	58	102	1.80	8.00
HWIA4427-068A-130H	13.1	45	68	1.3	47	91	2.50	8.50
HWIA4427-068A-8R7H	8.7	45	68	1.3	87	154	2.50	8.50
HWIA4427-068A-5R6H	5.6	45	68	1.3	174	342	2.50	8.50
HWIA4427-092A-7R3H	7.3	61	92	0.7	63	122	3.00	8.50
HWIA4427-092A-4R9H	4.9	61	92	0.7	116	205	3.00	8.50
HWIA4427-122A-3R3H	3.3	80	122	0.4	95	183	3.50	8.50
HWIA4427-122A-2R2H	2.2	80	122	0.4	174	308	3.50	8.50
HWIA4427-122A-1R4H	1.4	80	122	0.4	349	685	3.50	8.50

Note:

1. Inductance measured at 10KHz, 1V_{rms}
2. I_{sat} is DC current at which the inductance drops the specified amount from its original value without bias.
3. I_{rms} is the DC current that causes the specified temperature rise of the winding from 25°C ambient for the inductor.

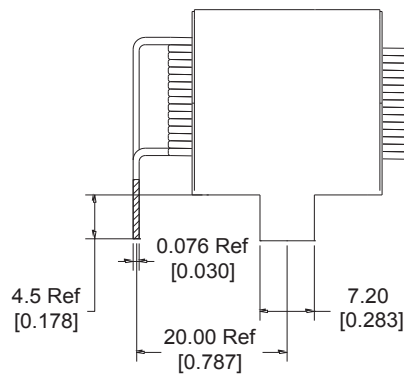
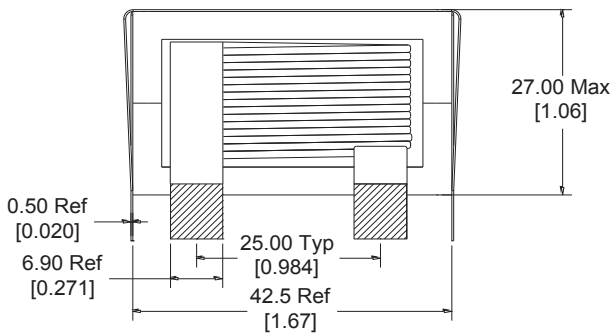
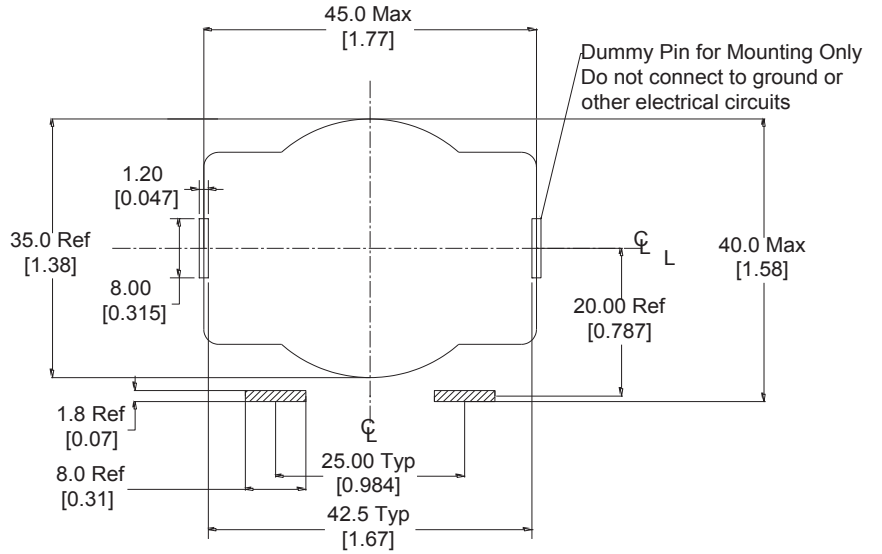
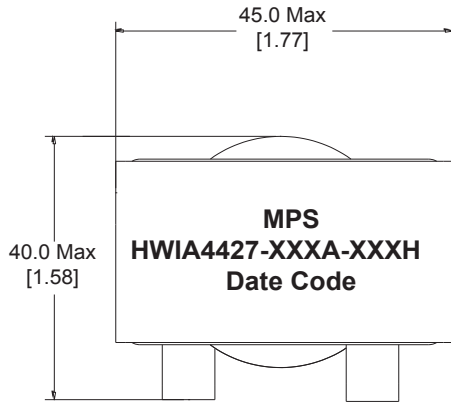
HEW (HELICAL EDGE WOUND) HIGH CURRENT INDUCTOR



HWIA4427H SERIES

DIMENSIONS (mm / [inch])

Recommended PCB Layout



Revised 10/16/2018
Product performance is limited to specified parameters. Data is subject to change without prior notice.

Tel: 310-325-1043
Fax: 310-325-1044

www.mpsind.com
sales@mpsind.com