

**PLEASE CHECK WWW.MOLEX.COM FOR LATEST PART INFORMATION**

**Part Number:** [0351430905](#)  
**Status:** **Planned for Obsolescence**  
**Description:** 2.00mm (.079") Dia Wire-to-Wire Housing, Plug, 9 Circuits

**Documents:**

[Drawing \(PDF\)](#) [RoHS Certificate of Compliance \(PDF\)](#)  
[Product Specification PS-35141-001 \(PDF\)](#)

**General**

Product Family Crimp Housings  
 Series [35143](#)  
 Product Name N/A

**Physical**

Breakaway No  
 Circuits (maximum) 9  
 Gender Male  
 Glow-Wire Compliant No  
 Number of Rows 3  
 Packaging Type Bag  
 Panel Mount No  
 Pitch - Mating Interface (in) 0.244 In  
 Pitch - Mating Interface (mm) 6.20 mm  
 Stackable No  
 Temperature Range - Operating -25°C to +90°C

**Material Info**

**Reference - Drawing Numbers**

Product Specification PS-35141-001  
 Sales Drawing SD-35143-090

**EU RoHS**

**ELV and RoHS  
 Compliant**  
**REACH SVHC  
 Contains SVHC: No**  
**Halogen-Free  
 Status**

**China RoHS**



**Not Reviewed**

**Need more information on product  
 environmental compliance?**

Email [productcompliance@molex.com](mailto:productcompliance@molex.com)  
 For a multiple part number RoHS Certificate of  
 Compliance, [click here](#)

Please visit the [Contact Us](#) section for any  
 non-product compliance questions.

**Search Parts in this Series**

[35143Series](#)

**Mates With**

[35141](#)

**Use With**

[35728-0201](#)

DO NOT SCALE DRAWING  
DIMENSION IN METRIC

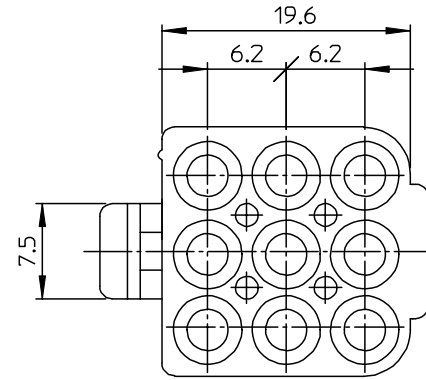
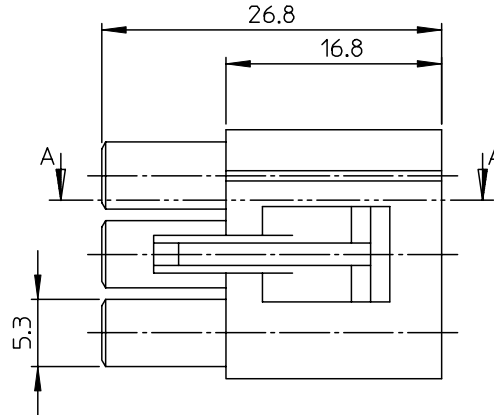
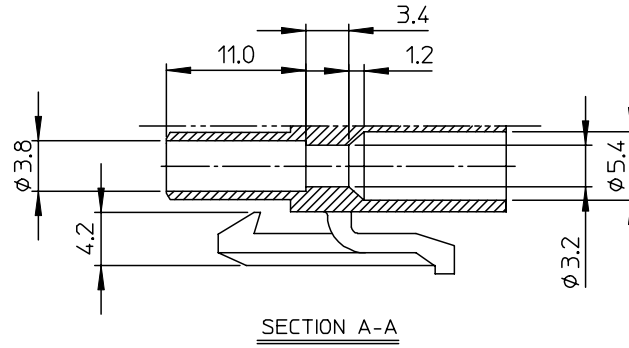
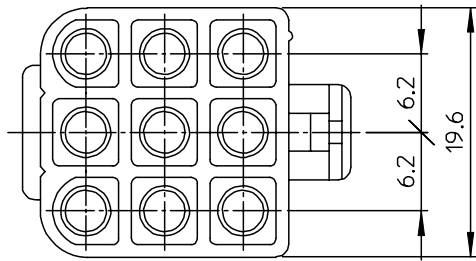
B

C

PROJECT NO.

SIMILAR ITEM

DWG. NO.  
SD-35143-090



NOTES

1. MATERIAL : NYLON ,UL94V-2
  - 1) NATURAL COLOR : 35143-0901
  - 2) BLACK COLOR : 35143-0905
2. APPLICABLE TERMINAL : 35728-0201
3. MATING HOUSING : 35141-0901

NEW RELEASED ECN NO.KOR2003-0247 DRWN: C.B.CHIN CHK: W.Y.YANG APPR: C.W.LEE	QUALITY SYMBOLS MAJOR $\blacktriangledown = 0$ CRITICAL $\nabla = 0$	GENERAL TOLERANCES: (UNLESS SPECIFIED)		SCALE 2.5:1	DESIGN UNITS <input checked="" type="checkbox"/> mm <input type="checkbox"/> INCH	THIRD ANGLE PROJECTION <input checked="" type="checkbox"/> <input type="checkbox"/>	DIMENSIONS: <input type="checkbox"/> mm <input checked="" type="checkbox"/> INCH	SHT	REV	
		4 PLACES	$\pm 0.$	$\pm -$	DRAWN BY & DATE C.B.CHIN 02/06/03		TITLE: $\varnothing$ 2.0 PLUG HOUSING-9P			
		3 PLACES	$\pm 0.$	$\pm -$	CHECKED BY & DATE W.Y.YANG 02/06/03					
		2 PLACES	$\pm 0.3$	$\pm -$	APPROVED BY & DATE C.W.LEE 02/06/03		MOLEX INCORPORATED			
1 PLACE	$\pm 0.3$	$\pm -$	ANGULAR: $\pm$ °		CAD FILENAME S351430901MI	MATERIAL NO. SEE NOTES	DRAWING NO. SD-35143-090	SHEET NO. 1 OF 1		
A	REV	DRAFT WHERE APPLICABLE MUST REMAIN WITHIN DIMENSIONS			THIS DRAWING CONTAINS INFORMATION THAT IS PROPRIETARY TO MOLEX INCORPORATED AND SHOULD NOT BE USED WITHOUT WRITTEN PERMISSION.					SIZE B

KOREA

MX-A3

A

B

C

D

E

F

8 7 6 5 4 3 2 1