

PLEASE CHECK WWW.MOLEX.COM FOR LATEST PART INFORMATION

Part Number: [0510151100](#)
Status: **Active**
Description: 2.00mm (.079") Pitch Board-In Crimp Housing, Low Profile, 11 Circuits

Documents:

3D Model	Product Specification PS-51015-002 (PDF)
Drawing (PDF)	RoHS Certificate of Compliance (PDF)
Product Specification PS-51015-001 (PDF)	

Agency Certification

UL	E29179
----	--------

General

Product Family	Crimp Housings
Series	51015
Product Name	Board-In

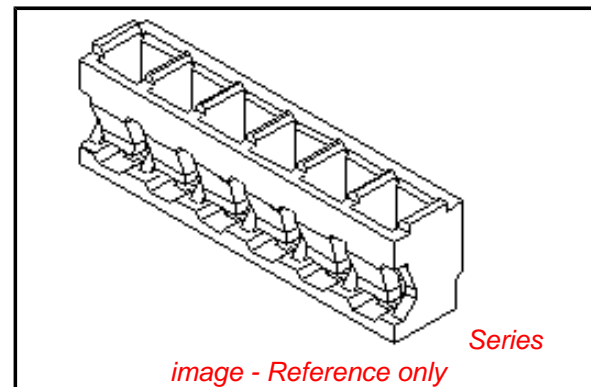
Physical

Circuits (maximum)	11
Color - Resin	Natural
Flammability	94V-0
Gender	Male
Glow-Wire Compliant	No
Material - Resin	Nylon
Number of Rows	1
Packaging Type	Bag
Panel Mount	No
Pitch - Mating Interface (in)	0.079 In
Pitch - Mating Interface (mm)	2.00 mm
Stackable	No
Temperature Range - Operating	-40°C to +105°C

Material Info

Reference - Drawing Numbers

Product Specification	PS-51015-001, PS-51015-002, RPS-51015-001, RPS-51015-003, RPS-51015-004, RPS-51015-006
Sales Drawing	SD-51015-**00



EU RoHS

ELV and RoHS Compliant
REACH SVHC
Contains SVHC: No
Halogen-Free
Status

China RoHS



Need more information on product environmental compliance?

Email productcompliance@molex.com
 For a multiple part number RoHS Certificate of Compliance, [click here](#)

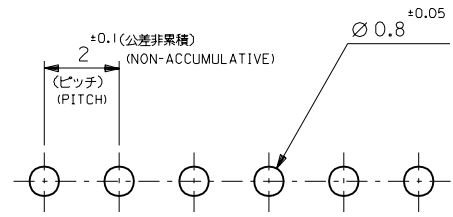
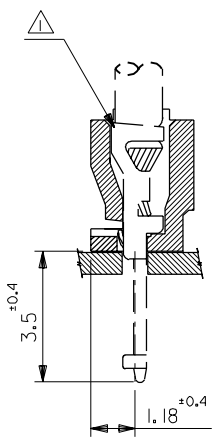
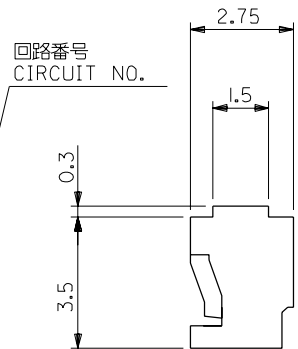
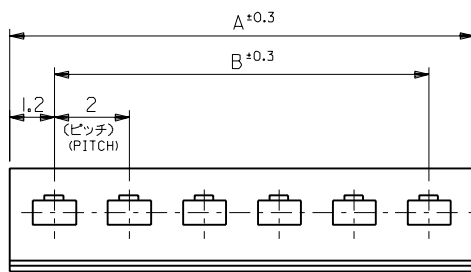
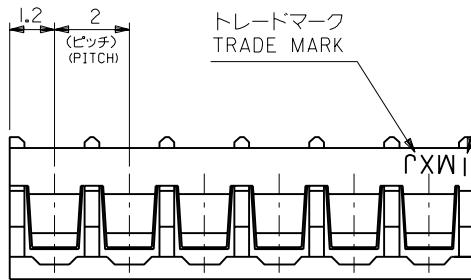
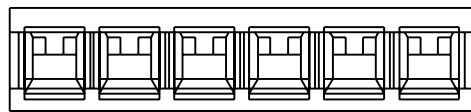
Please visit the [Contact Us](#) section for any non-product compliance questions.

Search Parts in this Series

[51015Series](#)

Use With

[50034](#)



基板取付穴推奨寸法
 (基板厚: t=1~1.6mm)
 RECOMMENDED PC BOARD
 HOLE DIMENSION
 (THICKNESS: t=1~1.6mm)

注記
 NOTE

△ 適合ターミナル: 50034-8*00
 APPLICABLE TERMINAL: 50034-8*00

28	30.4	51015-1500	15
26	28.4	↑ -1400	14
24	26.4	-1300	13
22	24.4	-1200	12
20	22.4	-1100	11
18	20.4	-1000	10
16	18.4	-0900	9
14	16.4	-0800	8
12	14.4	-0700	7
10	12.4	-0600	6
8	10.4	-0500	5
6	8.4	-0400	4
4	6.4	↓ -0300	3
2	4.4	51015-0200	2
B	A	ENG.NO.	種数 NO. OF CKT

材料 MATERIAL ナイロン66, UL94V-0 NYLON66, UL94V-0		仕上げ FINISH —		適用電線範囲 WIRE RANGE —		被覆外径 INS. RANGE —		DRAWN BY '96/05/28 H.IIJIMA		CHK'D BY '96/05/28 M.FUKUSHIMA	
角度 ANGLE +3°		30以上 OVER +0.3		10以上 30未満 UNDER +0.25		10未満 UNDER +0.2		DRAWN BY '96/05/28 M.ENOMOTO		CHK'D BY '96/05/28 M.FUKUSHIMA	
一般公差 GENERAL TOLERANCES		記号 LTR		変更内容 REVISION RECORD		DR. CHK.		日付 DATE		尺度 SCALE 8:1	
B		再作図 REDRAWN		LC703101		H.I.		'96/05/20		M.F.	

molex MOLEX-JAPAN CO.,LTD. 日本モレックス株式会社	
REVISE ONLY ON CAD SYSTEM	
TITLE 名称 2.0 BOARD IN CONN. HSG.	
DWG. NO. SD-51015-**-00	REV B