

Dielectric Resonator (CO-AXIAL)

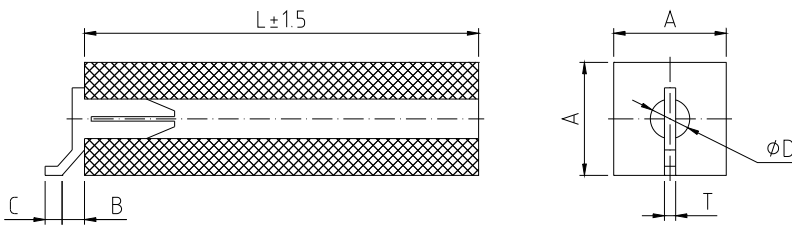
DR Series

The DR series dielectric resonators (CO-AXIAL) have high dielectric constant, which designed for telecommunication equipment, featuring small size, high frequency, and high reliability, and suitable to Surface Mount technologies.

ELECTRICAL CHARACTERISTICS							
Material Series	Dielectric Constant	Frequency Stability of Temperature	Wave Length	Model	Frequency Range (MHz)	Qu (min)	Frequency Tolerance
DR-90	90 ± 2	0 ± 10	$\lambda/2$ or $\lambda/4$	S10	300 ~ 700	600	K/J
				S06	400 ~ 490	330	
					500 ~ 790	350	
					800 ~ 1290	400	
					1300 ~ 1690	470	
					1700 ~ 2200	510	
				S05	500 ~ 590	270	
					600 ~ 1490	350	
					1500 ~ 2500	400	
				S04	500~540	200	
					550~640	220	
					650~790	240	
					800~890	260	
					900~1490	270	
					1500~1790	290	
					1800~1890	340	
				S03	1900~3000	370	
					900~1490	230	
					1500~1690	250	
					1700~1990	270	
S4x6	2000~3000	290					
	400~900	200					
	S2x3	900~1590	170				
1600~2590		200					
2600~3000		260					
DR-37	37 ± 2	0 ± 10	$\lambda/2$ or $\lambda/4$	S10	400~1200	650	K/J
				S06	700~1540	450	
					1550~1800	550	
				S04	1000~1900	360	
2000~3000	400						
DR-21	21 ± 2	0 ± 10	$\lambda/2$ or $\lambda/4$	S06	1000~1190	500	K/J
					1200~1790	600	
					1800~2490	650	
					2500~3000	850	
				S04	1300~1490	350	
					1500~1990	400	
					2000~3000	450	
				S03	1900~2490	380	
2500~3000	400						

Note: Qu is the lowest value of frequency.

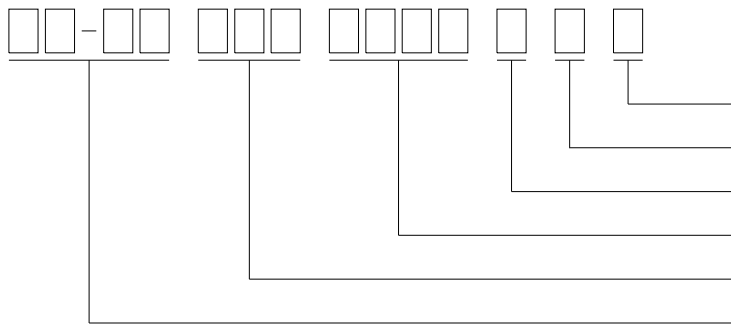
PACKAGE OUTLINE DIMENSIONS



Code/Model	S10	S06	S05	S04	S03
A	10	6	5	4	3
T	1.0	1.0	0.7	0.5	0.5
B	2.0	2.0	1.5	1.0	1.0
C	1.5	1.2	1.0	0.8	0.8
D	3.05	2.45	1.57	1.35	1.0
L	Varies with frequency				

Tolerance: ± 0.3mm
Unit: mm

PART NUMBER BUILDER



- Connector (T: with N: without)
- Frequency Tolerance (J: ±1.0% K: ±0.5%)
- Wave Length (2: λ/2 4: λ/4)
- Frequency in MHz
- Model (S06: 6 × 6 mm)
- Material Series