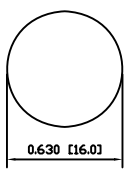
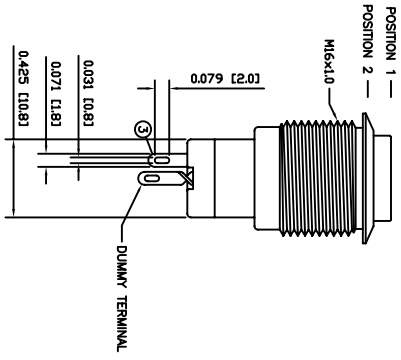
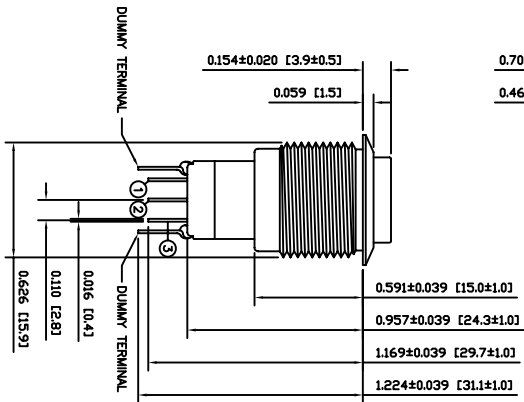
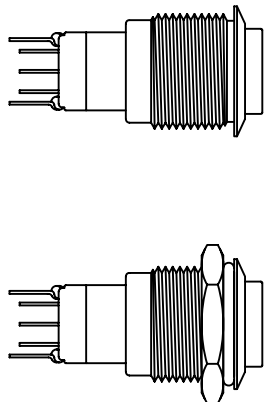


0.709 [18.0]
0.465 [11.8]



SUGGESTED PANEL CUTOUT
MAXIMUM PANEL THICKNESS: 0.315 [8.0mm]



SUGGESTED PANEL CUTOUT

SCHEMATIC

SPECIFICATIONS

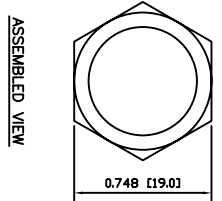
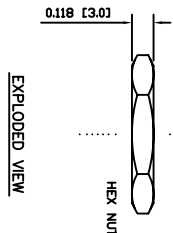
FUNCTION: 1P2T ON-(ON)
RATING: 2A 48VAC
CONTACT RESISTANCE: Initial: 50mΩ Max. at 1A 12VDC
INSULATION RESISTANCE: 1,000MΩ Min. at 500VDC
DIELECTRIC STRENGTH: 2,000VAC Min. for 1 Minute
ELECTRICAL LIFE: 50,000 Cycles
MECHANICAL LIFE: 200,000 Cycles
TEMPERATURE: Operating: -20°C to 55°C
INGRESS PROTECTION: IP65
APPROVALS: **ROHS COMPLIANT**

MATERIALS

BUSHING: Aluminum
BASE: Polycarbonate (PC)
Polybutylene Terephthalate (PBT)
ACTUATOR: Aluminum
Polycarbonate (PC)
HARDWARE: Nickel Plated Brass (159)
SEALING: Silicone
INNER ASSEMBLY: Polycarbonate (PC)
Phosphor Bronze
SPRING: Spring Steel
CONTACTS: Silver/Cadmium Oxide (AgCdO)
TERMINALS: Silver Plated Brass (182)
O-RINGS: Silicone Rubber

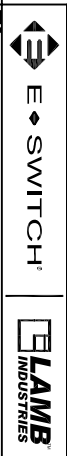
COLORS AND FINISH

BEZEL: Black
Anodized Finish
ACTUATOR: Red
Anodized Finish
ILLUMINATION: None
MARKING: None



EXPLODED VIEW

ASSEMBLED VIEW



PV3SWH2B019

REV.	DATE	BY	CHK
A	10/03/24	CAB	
B	09/07/19	CAB	
C	09/10/18	CAB	
D	09/09/28	CAB	

THE INFORMATION CONTAINED IN THIS DOCUMENT IS PROPRIETARY TO E-SWITCH AND IS NOT TO BE COPIED OR TRANSMITTED IN ANY FORM OR BY ANY MEANS, ELECTRONIC OR MECHANICAL, INCLUDING PHOTOCOPYING, RECORDING, OR BY ANY INFORMATION STORAGE AND RETRIEVAL SYSTEM.

REV.	DATE	DESCRIPTION
A	20208	NEW RELEASE

SCALE: DRAWING NOT TO SCALE
PROJECTION: THIRD ANGLE

DATE	BY	DATE	BY
09/13/12	TC	09/13/12	TC

INCHES [MILLIMETERS]
GENERAL TOLERANCES: ±0.008 [±0.2] / ±1'

TRIAL NUMBER: 52-PV3SWH2B019

DATE: AUG 13, 2012

REVISION: A