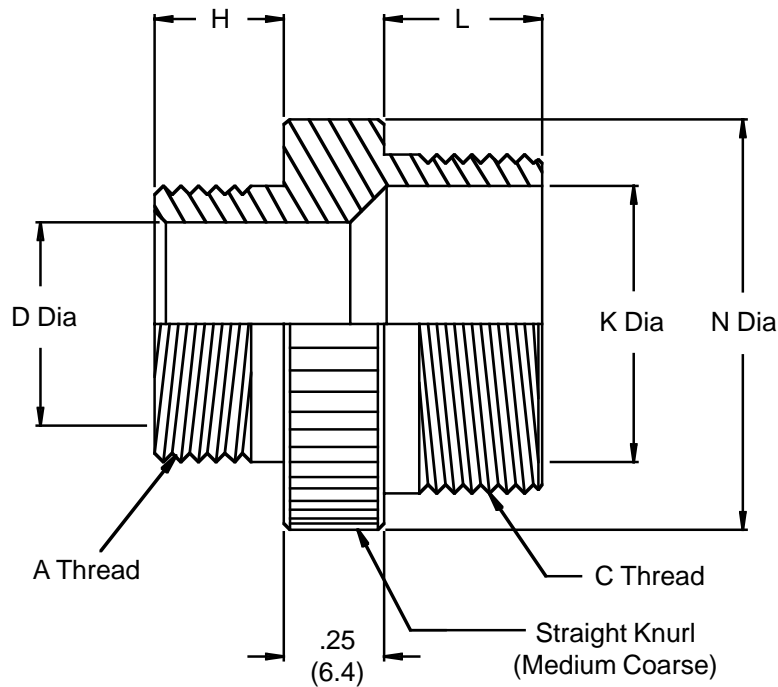
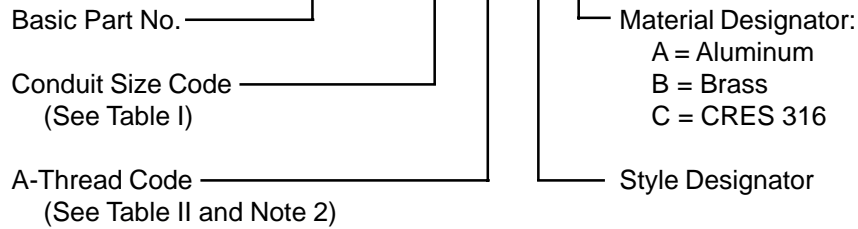


M24758/11 Adapter for Coaxial Connectors

M24758/11-16-01-01-A



1. The M24758/11 adapter couples coaxial connectors to M24758/2, M24758/3 or M24758/4 fittings.
2. Select an A-thread from Table II which matches that of the back of the nut on the connector being used. If none of the A-threads match, substitute the desired A-thread information in lieu of the A-thread code in the part number.
For example, a fitting for a 0.375" conduit with a 0.5-28 A-thread of 0.313" H-length would have the part number: M24758/11-03-0.5-28-0.313-A.
3. Metric dimensions (mm) are indicated in parentheses.
4. For complete dimensions see applicable Military Specification.

M24758/11 Adapter for Coaxial Connectors



TABLE I

| Conduit Size Code | C Thread (Class 2A) | L | | K Dia Min. | | N Dia | |
|-------------------|---------------------|------|--------|------------|--------|-------|--------|
| | | ±.02 | (.5) | | | ±.02 | (.5) |
| 02 | 0.438 - 28 UNEF | .210 | (5.3) | .250 | (6.4) | .687 | (17.4) |
| 03 | 0.563 - 24 UNEF | .250 | (6.4) | .370 | (9.4) | .812 | (20.6) |
| 04 | 0.688 - 24 UNEF | .250 | (6.4) | .500 | (12.7) | .937 | (23.8) |
| 05 | 0.813 - 20 UNEF | .310 | (7.9) | .620 | (15.7) | 1.062 | (27.0) |
| 06 | 0.938 - 20 UNEF | .310 | (7.9) | .750 | (19.1) | 1.187 | (30.1) |
| 08 | 1.250 - 18 UNEF | .370 | (9.4) | 1.000 | (25.4) | 1.500 | (38.1) |
| 10 | 1.563 - 18 UNEF | .370 | (9.4) | 1.250 | (31.8) | 1.812 | (46.0) |
| 12 | 1.875 - 16 UN | .430 | (10.9) | 1.500 | (38.1) | 2.125 | (54.0) |
| 16 | 2.375 - 16 UN | .430 | (10.9) | 2.000 | (50.8) | 2.625 | (66.7) |
| 20 | 2.875 - 16 UN | .430 | (10.9) | 2.500 | (63.5) | 3.125 | (79.4) |
| 24 | 3.375 - 16 UN | .430 | (10.9) | 3.000 | (76.2) | 3.625 | (92.1) |

TABLE II (A Thread and Fitting Dimensions)

| A Thread Code | C Thread (Class 2A) | H | | D Dia | | Coaxial Cable | |
|---------------|---------------------|------|-------|-------|--------|---------------|-------------|
| | | ±.03 | (.8) | ±.02 | (.5) | Type | OD |
| 02 | 0.375 - 32 UNEF | .210 | (5.3) | .226 | (5.7) | RG-58 | .195 (5.0) |
| | | | | | | RG-223 | .216 (5.5) |
| 04 | 0.438 - 28 UNEF | .250 | (6.4) | .345 | (8.8) | RG-5 | .332 (8.4) |
| | | | | | | RG-6 | .332 (8.4) |
| | | | | | | RG-21 | .332 (8.4) |
| 06 | 0.625 - 24 UNEF | .310 | (7.9) | .433 | (11.0) | RG-9 | .420 (10.7) |
| | | | | | | RG-214 | .425 (10.8) |
| 08 | 0.688 - 24 UNEF | .310 | (7.9) | .568 | (14.4) | RG-14 | .545 (13.8) |
| | | | | | | RG-293 | .545 (13.8) |
| 10 | 0.938 - 20 UNEF | .310 | (7.9) | .650 | (16.5) | RG-57 | .625 (15.9) |
| | | | | | | RG-294 | .630 (16.0) |
| 12 | 0.813 - 20 UNEF | .310 | (7.9) | .895 | (22.7) | RG-7 | .870 (22.1) |