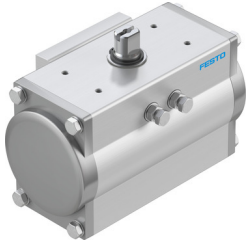


# Quarter turn actuator DFPD-40-RP-90-RD-F0507

Part number: 8047615

FESTO



## Data sheet

Feature	Value
Size of valve actuator	40
Flange hole pattern	F0507
Swivel angle	90 deg
End-position adjusting range at 0°	-5 deg ... 5 deg
End-position adjusting range at nominal swivel angle	-5 deg ... 5 deg
Depth shaft connection	16 mm
Type code	DFPD
Standard connection for valve	ISO 5211
Mounting position	Any
Mode of operation	Double-acting
Design	Gear rack/pinion
Closing direction	Clockwise closing
Symbol	00991265
Valve connection conforms to standard	VDI/VDE 3845 (NAMUR)
Connection for valve positioner and position sensor conforms to standard	VDI/VDE 3845 size AA 1
Devices type according to VDMA 66413	Safety device
Safety function	The fundamental safety function is the execution of a complete working stroke (opening and closing of the process valve) within a defined time.
Safety integrity level (SIL)	Up to SIL 2 low demand mode up to SIL 3 in a redundant architecture up to SIL 1 high demand mode
Certified for safety function to ISO 13849 and IEC 61508 (SIL)	Product can be used in safety-related parts of control systems up to SIL 2, low demand Product can be used in safety-related parts of control systems up to SIL 1, high demand up to SIL 3 in a redundant architecture
Operating pressure	0.2 MPa ... 0.8 MPa
Operating pressure	2 bar ... 8 bar
Operating pressure	29 psi ... 116 psi
Nominal operating pressure	0.55 MPa
Nominal operating pressure	5.5 bar
Nominal operating pressure	79.75 psi
Maritime classification	See certificate
CE marking (see declaration of conformity)	as per EU explosion protection directive (ATEX)
Explosion prevention and protection	Zone 1 (ATEX) Zone 2 (ATEX) Zone 21 (ATEX) Zone 22 (ATEX)

Feature	Value
Certificate issuing authority	DNVGL TAP00001CE German Technical Control Board (TÜV) Rheinland 968/V 1106.00/19
ATEX category gas	II 2G
ATEX category for dust	II 2D
Type of ignition protection for gas	Ex h IIC T4 Gb X
Type of (ignition) protection for dust	Ex h IIIC T105°C Db X
Explosive ambient temperature	-20°C ≤ Ta ≤ +80°C
Operating medium	Compressed air as per ISO 8573-1:2010 [7:4:4]
Information on operating and pilot media	Operation with oil lubrication possible (required for further use)
Corrosion resistance class (CRC)	2 - Moderate corrosion stress
Storage temperature	-20 °C ... 60 °C
Ambient temperature	-20 °C ... 80 °C
Torque at nominal operating pressure and 0° swivel angle	38.3 Nm
Torque at nominal operating pressure and 90° swivel angle	38.3 Nm
Note about the torque	The actuator's operating torque must not be higher than the maximum permissible torque listed in ISO 5211, based on the size of the mounting flange and the coupling.
MTTFd	1126 years
PFH	1.01E-7
PFD	0.00142
Air consumption at 6 bar per cycle 0°-nominal swivel angle-0°	3.4 l
Product weight	1882 g
Shaft connection	T14
Pneumatic connection	G1/8
Note on materials	RoHS-compliant
Material of sub-base	Wrought aluminum alloy, anodized
Cover material	Die-cast aluminum, coated
Seals material	NBR
Housing material	Wrought aluminum alloy, anodized
Material of piston	Die-cast aluminum
Material of bearing	POM
Cam material	Cast stainless steel
Material of screws	High-alloy stainless steel
Shaft material	Steel, nickel-plated