

# Monolithic crystal filter

## MQF10.7-0300/11 (preliminary specification)



### Application

- 6 pol filter
- i.f.- filter
- use in mobile and stationary transceivers

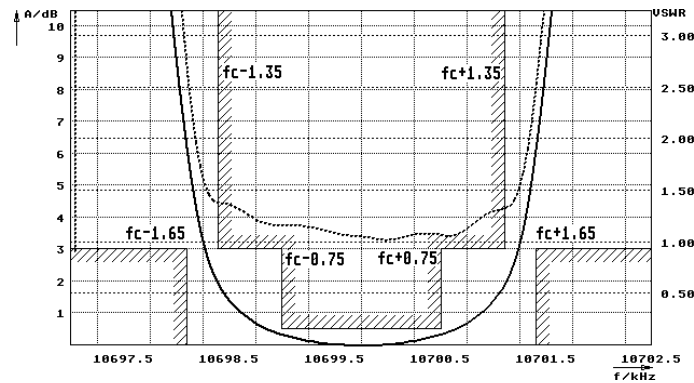
Limiting values		Unit	Value
Nominal frequency	$f_0$	MHz	10.7
Centre frequency	$f_c$ measured at 3 dB	MHz	$10.7 \pm 400$ Hz
Insertion loss		dB	< 5.0
Pass band at 3.0dB		kHz	$f_c \pm (1.35 \dots 1.65)$
Ripple in pass band	$f_0 \pm 0.75$ kHz	dB	< 0.5
Stop band attenuation	$f_0 \pm 7.5$ kHz	dB	> 60
Alternate attenuation		dB	> 80 except spurious
VSWR	$f_c \pm 1.35$ kHz		< 2
Phase difference for pairs	$f_c$	°	< 12
Phase tracking	$f_c \pm 1.2$ kHz	°	< 6 referred to $f_c$

Terminating impedance Z			
R1  C1	Ohm/pF	50    0	
R2  C2	Ohm/pF	50    0	

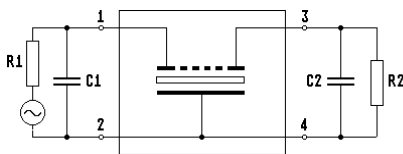
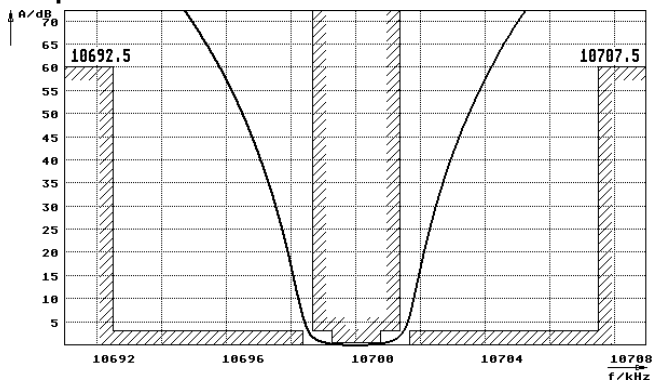
Operating temp. range	°C	+0... +50
-----------------------	----	-----------

### Characteristics MQF10.7-0300/11

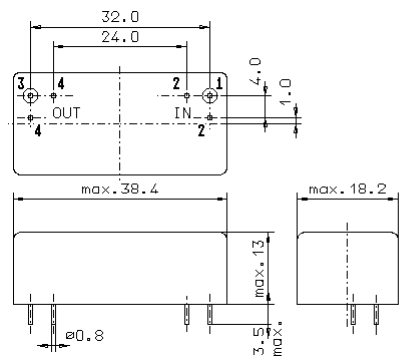
#### Pass band



#### Stop band



- Pin connections:
- 1 Input
  - 2 Ground-Input
  - 3 Output
  - 4 Ground-Output



GM17