

**PLEASE CHECK WWW.MOLEX.COM FOR LATEST PART INFORMATION**

**Part Number:** [0191640006](#)  
**Status:** **Active**  
**Description:** Perma-Seal™ Spade Tongue Terminal for 18-22 AWG Wire, Stud Size 6

**Agency Certification**

CSA LR18689  
 UL E32244

**General**

Product Family Ring and Spade Terminals  
 Series [19164](#)  
 Crimp Quality Equipment Yes  
 Mil-Spec N/A  
 MolexKits Yes  
 Product Name Perma-Seal™  
 Type Spade

**Physical**

Barrel Type Closed  
 Flammability 94V-2  
 Insulation NiAc™  
 Material - Plating Mating Tin  
 Packaging Type Bag  
 Plating min: Mating (µin) 100  
 Plating min: Mating (µm) 2.5  
 Plating min: Termination (µin) 100  
 Plating min: Termination (µm) 2.5  
 Stud Size 6 (M3.5)  
 Wire Insulation Diameter 5.97mm (.235")  
 Wire Size AWG 18, 20, 22  
 Wire Size mm² 0.38 - 0.96

**Material Info**

Old Part Number SA-235-06

**Reference - Drawing Numbers**

Sales Drawing SD-19164-025

**EU RoHS**

**ELV and RoHS  
Compliant**

**REACH SVHC**

Not Reviewed

**Halogen-Free**

**Status**

**Not Reviewed**

**China RoHS**



**Need more information on product  
environmental compliance?**

Email [productcompliance@molex.com](mailto:productcompliance@molex.com)  
 For a multiple part number RoHS Certificate of  
 Compliance, [click here](#)

Please visit the [Contact Us](#) section for any  
 non-product compliance questions.

**Search Parts in this Series**

[19164Series](#)

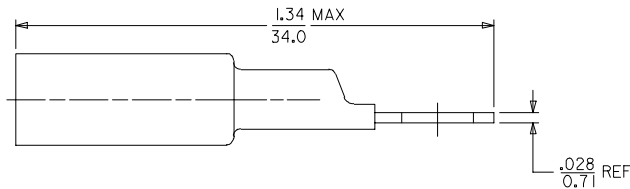
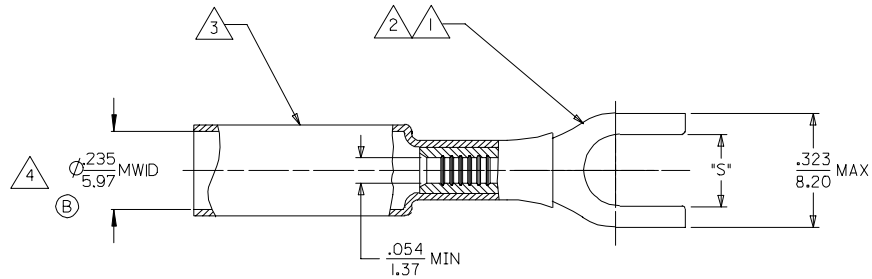
**Application Tooling | FAQ**

*Tooling specifications and manuals are  
found by selecting the products below.  
Crimp Height Specifications are then  
contained in the Application Tooling  
Specification document.*

**Global**

Description	Product #
Power Crimp Tool	<a href="#">0640057400</a>
Head for Prema-Seal™ Terminals 10-22 AWG	
Hand Crimp Tool, UL	<a href="#">0640017400</a>
Approved	

MATERIAL NUMBER	ENGINEERING NUMBER	STUD SIZE	SLOT 'S' ±0.10 ±0.25
191640006	SA-235-06	#6	Ø.146/3.71
191640007	SA-235-08	#8	Ø.173/4.39
191640008	SA-235-10	#10	Ø.198/5.03



NOTES:

- 1. TERMINAL MATERIAL: COPPER ALLOY
- 2. FINISH: ELECTRO TIN PLATE.
- 3. INSULATION MATERIAL: HEAT SHRINKABLE TUBING WITH HOTMELT ADHESIVE INNER LINER. COLOR: RED.
- 4. MWID = MAXIMUM WIRE INSULATION DIAMETER.

SALES DRAWING

CHANGED MWID EC NO: ETC2006-0154 DRAWN BY: ASAYDEH CHKD: JLOMASTRO APPR: JPAWLICK	2005/12/21 2005/12/21 2005/12/21	DESCRIPTION REVISIONS 1 2 3 4	QUALITY SYMBOLS		GENERAL TOLERANCES (UNLESS SPECIFIED) mm INCH 4 PLACES ± --- ± --- 3 PLACES ± --- ± --- 2 PLACES ± --- ± --- 1 PLACE ± --- ± --- ANGULAR ± --- °	DIMENSION STYLE		SCALE --- DESIGN UNITS INCH THIRD ANGLE PROJECTION	DRAWN BY: ASAYDEH CHECKED BY: JLOMASTRO APPROVED BY: RDEROSS MATERIAL NO. DATE: 05/12/13	TITLE SPADE TERMINAL NIAC 22-18 AWG MOLEX INCORPORATED DOCUMENT NO. SD-19164-025 SHEET NO. 1 OF 1
			=0			IN/MM				
			=0							
DRAFT WHERE APPLICABLE MUST REMAIN WITHIN DIMENSIONS						SEE CHART		THIS DRAWING CONTAINS INFORMATION THAT IS PROPRIETARY TO MOLEX INCORPORATED AND SHOULD NOT BE USED WITHOUT WRITTEN PERMISSION		