

PLEASE CHECK WWW.MOLEX.COM FOR LATEST PART INFORMATION

Part Number: [0359771400](#)
Status: **Planned for Obsolescence**
Overview: [mv396](#)
Description: 3.96mm (.156") Pitch Wire-to-Board Housing, Positive Lock, 14 Circuits, White, Glow Wire Compatible

Documents:

[3D Model](#) [Product Specification PS-35979-001 \(PDF\)](#)
[Drawing \(PDF\)](#) [RoHS Certificate of Compliance \(PDF\)](#)

Agency Certification

CSA LR19980

General

Product Family Crimp Housings
 Series [35977](#)
 Overview [mv396](#)
 Product Name MV-396™

Physical

Circuits (maximum) 14
 Color - Resin White
 Flammability 94V-0
 Gender Female
 Glow-Wire Compliant No
 Keying to Mating Part None
 Lock to Mating Part Yes
 Material - Resin Nylon
 Number of Rows 1
 Packaging Type Bag
 Panel Mount No
 Pitch - Mating Interface (in) 0.156 In
 Pitch - Mating Interface (mm) 3.96 mm
 Polarized to Mating Part Yes
 Stackable Yes
 Temperature Range - Operating -25°C to +85°C

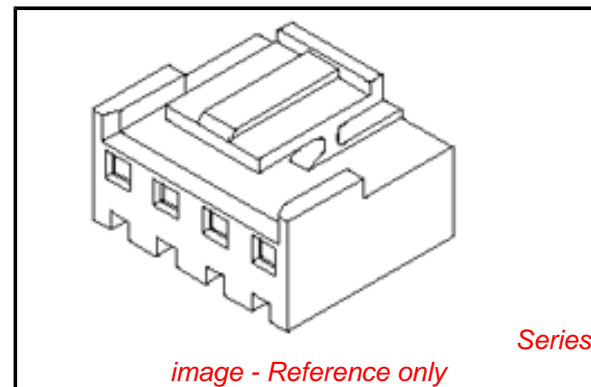
Electrical

Current - Maximum per Contact 7A

Material Info

Reference - Drawing Numbers

Packaging Specification PK-35977-001
 Product Specification PS-35979-001
 Sales Drawing SD-35977-001



EU RoHS

**ELV and RoHS
 Compliant
 REACH SVHC
 Not Reviewed
 Halogen-Free
 Status
 Not Reviewed**

China RoHS



Need more information on product environmental compliance?

Email productcompliance@molex.com
 For a multiple part number RoHS Certificate of Compliance, [click here](#)

Please visit the [Contact Us](#) section for any non-product compliance questions.

Search Parts in this Series

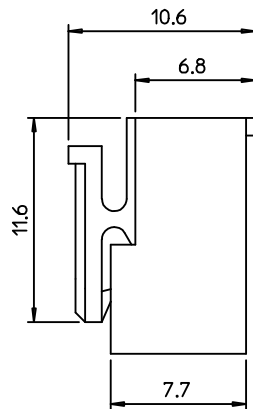
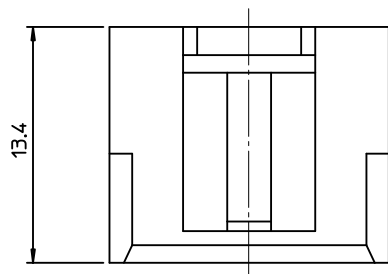
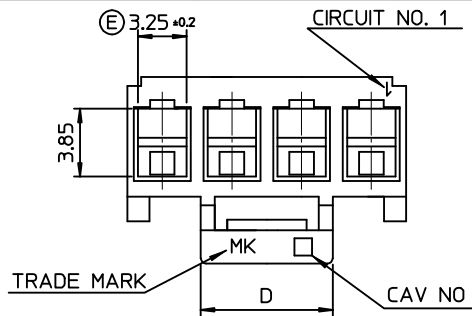
[35977Series](#)

Mates With

Wire-to-Board Header [35978](#) , [35979](#)

Use With

Wire-to-Board Terminal [35922](#)



NOTES

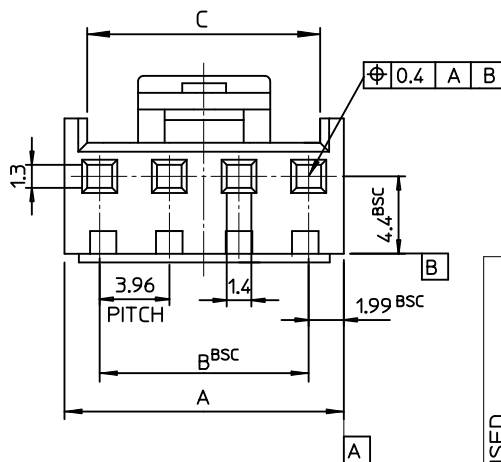
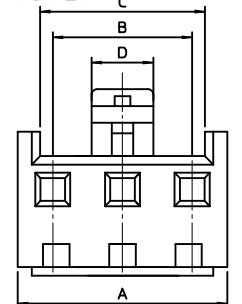
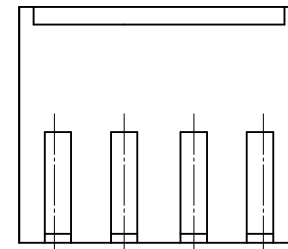
- 1. USED WITH TERMINAL : 35922-9002
 - 2. MATED WITH HEADER ASS'Y : 35978-**1*(PA66) 35978-**2*(PA66)
- LEGEND
 35978-**3*(PC/PET) 35978-**4*(PC/PET)

35977-****

- COLOR : 0 - WHITE
- 1 - BLACK
- 2 - RED
- 3 - YELLOW
- 4 - BLUE

MATERIAL 0 : PA66 (E) 9 : PC/PET

CURCUIT NO. (02,03,04...)



19.9	56.88	55.44	59.42	3597715**	35977-15**	15
19.9	52.92	51.48	55.46	3597714**	-14**	14
19.9	48.96	47.52	51.5	3597713**	-13**	13
19.9	45.0	43.56	47.54	3597712**	-12**	12
19.9	41.04	39.6	43.58	3597711**	-11**	11
19.9	37.08	35.64	39.62	3597710**	-10**	10
17.7	33.12	31.68	35.66	3597709**	-09**	9
15.7	29.16	27.72	31.70	3597708**	-08**	8
13.7	25.20	23.76	27.74	3597707**	-07**	7
7.5	21.24	19.80	23.78	3597706**	-06**	6
	17.28	15.84	19.82	3597705**	-05**	5
	13.32	11.88	15.86	3597704**	-04**	4
	9.36	7.92	11.90	3597703**	-03**	3
3.5	5.4	3.96	7.94	3597702**	35977-02**	2
D	C	B	A	MAT'L NO	ENG NO.	CIRCUITS

REVISED EC NO: KOR2009-0137 DRAWN: JHPARK01 2009/05/21 CHKD: WY YANG 2009/05/21 APPR: YUNSIKKIM 2009/05/22	QUALITY SYMBOLS = 0 = 0	GENERAL TOLERANCES (UNLESS SPECIFIED) <table border="1"> <tr> <th></th> <th>mm</th> <th>INCH</th> </tr> <tr> <td>4 PLACES</td> <td>± ---</td> <td>± ---</td> </tr> <tr> <td>3 PLACES</td> <td>± ---</td> <td>± ---</td> </tr> <tr> <td>2 PLACES</td> <td>± ---</td> <td>± ---</td> </tr> <tr> <td>1 PLACE</td> <td>± 0.30</td> <td>± ---</td> </tr> </table>		mm	INCH	4 PLACES	± ---	± ---	3 PLACES	± ---	± ---	2 PLACES	± ---	± ---	1 PLACE	± 0.30	± ---	DIMENSION STYLE MM ONLY	SCALE 3:1	DESIGN UNITS METRIC	THIRD ANGLE PROJECTION
		mm	INCH																		
	4 PLACES	± ---	± ---																		
	3 PLACES	± ---	± ---																		
2 PLACES	± ---	± ---																			
1 PLACE	± 0.30	± ---																			
REV DESCRIPTION REV DESCRIPTION	DRAFT WHERE APPLICABLE MUST REMAIN WITHIN DIMENSIONS	DRAWN BY DATE YR.WI 1999/05/06 CHECKED BY DATE JH.OH 1999/05/06 APPROVED BY DATE CW.LEE 1999/05/06	MATERIAL NO. SEE TABLE	DOCUMENT NO. SD-35977-001	SHEET NO. 1 OF 01	3.96 PITCH W-T-B CONN. HOUSING															
THIS DRAWING CONTAINS INFORMATION THAT IS PROPRIETARY TO MOLEX INCORPORATED AND SHOULD NOT BE USED WITHOUT WRITTEN PERMISSION	MOLEX INCORPORATED																				
SIZE A3																					