

**CPT-13-6016**

# Temperature Compensated Amplifier

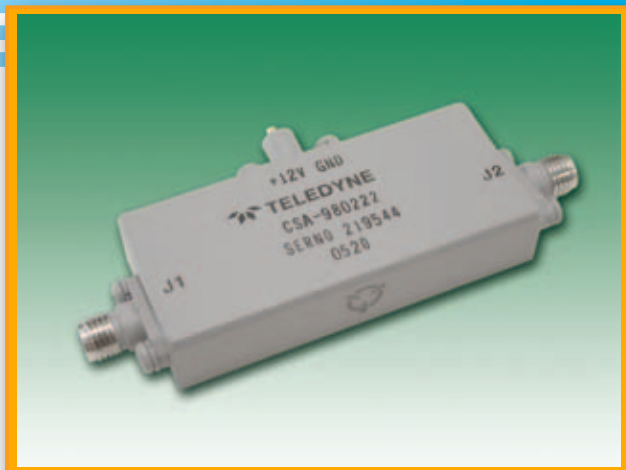
## 6 GHz - 13 GHz

This Amplifier offers exceptional performance over the band 6 GHz to 13 GHz with 23 dBm P1dB output power and 45 dB Gain.

Teledyne Microwave amplifiers are balanced or feedback designs and manufactured with the latest MIC & MMIC technology. The GaAs FET's used in these amplifiers are well established proven devices from multiple sources.

Teledyne Microwave offers a complete line of Narrow and broadband Amplifiers covering the frequency range 500 MHz to 40 GHz. These products are available in either connectorized packages or as modules. For a complete list of these products and more, please visit our website.

Other products from Teledyne Microwave include: Transceivers, Synthesizers, and YIG Products



---

### Specifications:

Model Number: CPT-13-6016  
Frequency Range: 6 GHz - 13 GHz  
Gain (min): 45 dB  
Gain Vs Temp at any Frequency: +/-1.75 dB  
Noise Figure (max): 7 dB  
Output Power @ 1dB Compression: 23 dBm  
Gain Flatness Vs Frequency: +/-2 dB  
3<sup>rd</sup> Order Intercept (Typ): 30 dBm  
Power Supply:  
    Input Voltage: 11.5 to 15 VDC  
    Current @ 12 VDC (typ): 850 mA  
    Current @ 12 VDC (max): 950 mA  
Case Type (See attached Outline): SX8  
Temperature Range: -54 to +90C



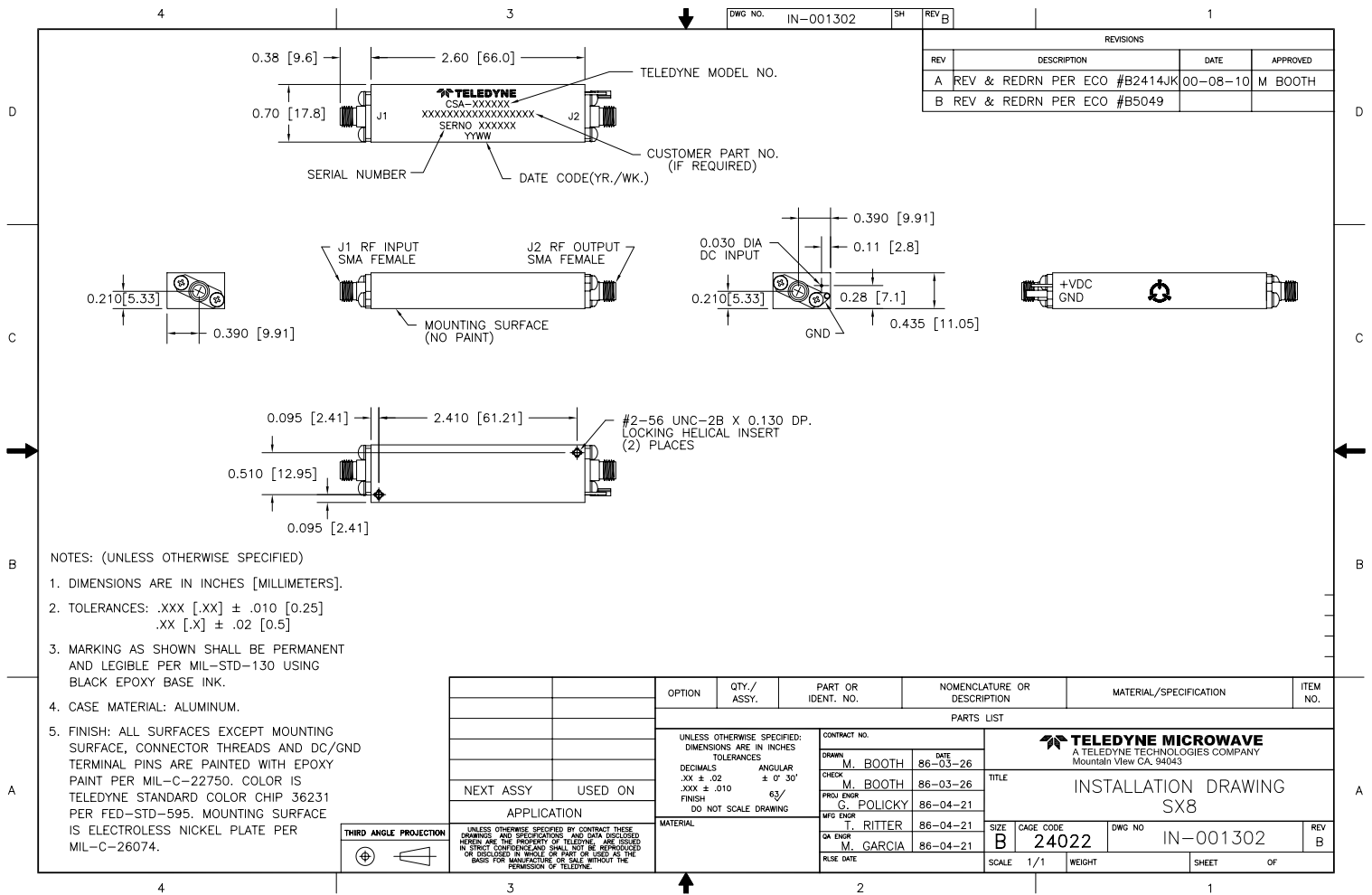
ISO 9001:2000

1274 Terra Bella Avenue, Mountain View, CA 94043 • PHN# 800.832.6869 or +1.650.962.6944 • FAX# 650.962.6845  
www.teledynemicrowave.com • microwave@teledyne.com

CPT-13-6016

# Temperature Compensated Amplifier

## 6 GHz - 13 GHz



ISO 9001:2000

1274 Terra Bella Avenue, Mountain View, CA 94043 • PHN# 800.832.6869 or +1.650.962.6944 • FAX# 650.962.6845  
www.teledynemicrowave.com • microwave@teledyne.com

Copyright © Each Manufacturing Company.

All Datasheets cannot be modified without permission.

This datasheet has been download from :

[www.AllDataSheet.com](http://www.AllDataSheet.com)

100% Free DataSheet Search Site.

Free Download.

No Register.

Fast Search System.

[www.AllDataSheet.com](http://www.AllDataSheet.com)