

CABLE

Flat cable LIYZ 2x0.14mm²
colour white, ends tinned
Flachkabel LIYZ 2x0.14 mm²
Farbe weiss, Enden verzinkt

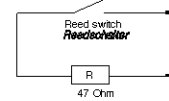


tolerances acc. to DIN ISO 2768-m
Abmessungen/dimensions in mm

MARKING

MEDER-Label, Type
Production code EN60062/
Factory code
circuit diagram
MEDER-Logo, Typ
Produktionscode
EN60062/Fertigungsstätte
Schaltbild

CIRCUIT DIAGRAM



Magnetical properties	Conditions	Min	Typ	Max	Unit
Pull in	at 20 °C	23		44	AT
Test equipment		KMS-14+PK002+SA002			

Special Product Data	Conditions	Min	Typ	Max	Unit
Contact - form		A - NO			
Contact rating	Any DC combination of V & A not to exceed their individual max.'s			10	W
operating voltage	DC or Peak AC			180	VDC
operating ampere	DC or Peak AC			1,25	A
Switching current				0,5	A
Sensor-resistance	measured with 40% overdrive			54,7	Ohm
Housing material		PBT glass fibre reinforced			
Case color		white			
Sealing compound		Polyurethan			

Environmental data	Conditions	Min	Typ	Max	Unit
Operating temperature	Cable not moved	-30		70	°C
Operating temperature	cable moved	-5		70	°C
Storage temperature		-30		70	°C

Cable specification	Conditions	Min	Typ	Max	Unit
Cable typ		flat cable			
Cable material		PVC			
Cross section [mm ²]		0,14			

General data	Conditions	Min	Typ	Max	Unit
Remarks		resistor MBA 0204; 47 Ohm; 0,25W			
mounting advice 1		Decreased switching distances by mounting on iron			
mounting advice 2		Magnetically conductive screws must not be used			
tightening torque	Screw M3 ISO 1207 Disk ISO 7089			0,5	Nm