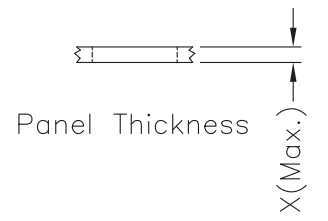
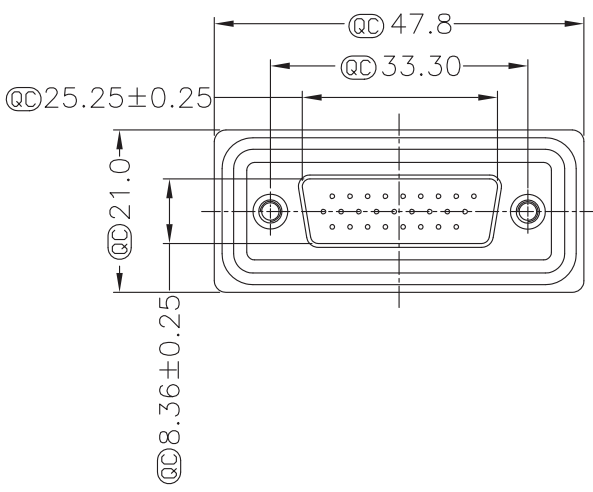
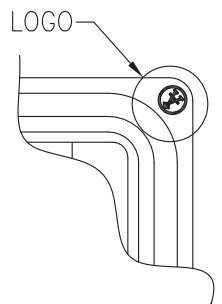
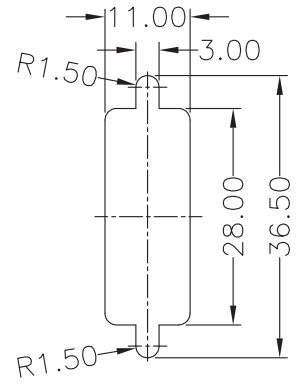
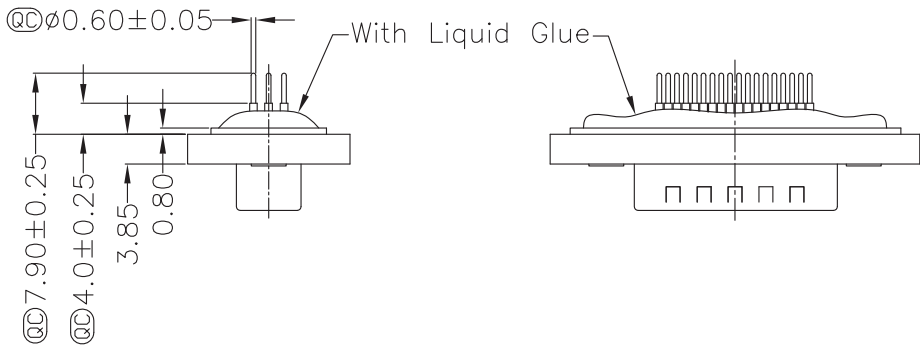
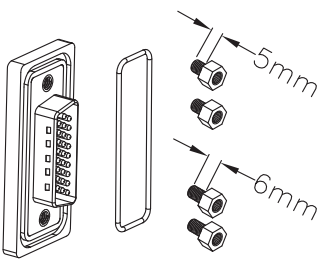


26 Pin Male connector  
PCB Pin Layout  
Scale 2:1



Screw L=5.0 For Panel Thickness Under 1.2mm  
Screw L=6.0 For Panel Thickness Between 1.2~2.0mm



Recommended Panel Cut-Out

- Material:**
- Waterproof rate: IP67
  - Connector: Black, Nylon+GF
  - Pin: Copper alloy, Gold plated

Unit: mm



Scale	Free						Date	Name
TOLERANCE						Drawn	30.11.11	Chappell
X.X	$\pm 0.25$					Approved		
X.XX	$\pm 0.10$							
X.XXX	$\pm 0.05$							
DIM	TOL							
X.°	$\pm 1^\circ$							
X.X°	$\pm X^\circ$							
Angle	TOL							
		Id.	Modification	Date	Name	1840 W. Drake Drive, Suite 101 • Tempe, AZ 85283 Toll Free: 1-877-277-6266 • Email: info@assmann.us		

Title	
Waterproof DSub connector High Density, Straight 26 pin, Male	
ASSMANN WSW-No.	
A-HDS26PP-WP	
Drawing-No.	
	rev00
Replace	Sheet
	1/1