

# PUSH SPACER SUPPORT POSTS

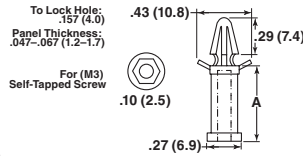
Buy One or Buy Bulk & SAVE

## CBTFS Threaded Female Locking Supports



- Specifications:**
- Material: Nylon 6/6
  - Color: Natural
  - Flame Class: UL94 V-2

- Features:**
- Threaded female support provides an exceptionally robust hold to the chassis
  - Easily disassembled for change or repair in the field



CBTFS Series (Threaded Female Locking Supports) can be used with the following screws:

Threads: M3

SXHM Series - SCSM Series - SPXM Series -  
Page: 784 Page: 787 Page: 786



Item No.	In	A mm	Bulk Pack Qty.
CBTFS005A	0.197	5.0	1000
CBTFS010A	0.250	6.4	1000
CBTFS015A	0.276	7.0	1000
CBTFS020A	0.394	10.0	1000
CBTFS025A	0.591	15.0	1000

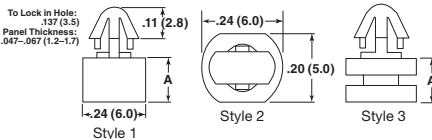
Item No.	In	A mm	Bulk Pack Qty.
CBTFS030A	0.787	20.0	1000
CBTFS035A	0.984	25.0	1000
CBTFS040A	1.181	30.0	1000
CBTFS045A	1.378	35.0	1000

## CBPSW Series Wide Base Push Spacers



- Specifications:**
- Material: Nylon 6/6
  - Color: Natural
  - Flame Class: UL94 V-2

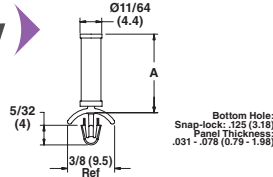
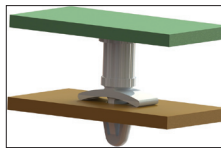
- Features:**
- The wide base design on both ends provides additional support for heavily loaded PCBs.
  - Eliminates screws, nuts and lock washers from mounting



Item No.	In	A mm	Style	Bulk Pack Qty.
CBPSW005A	0.118	3.0	1	2000
CBPSW010A	0.138	3.5	1	2000
CBPSW015A	0.157	4.0	1	2000
CBPSW020A	0.177	4.5	2	2000
CBPSW025A	0.197	5.0	3	2000
CBPSW030A	0.217	5.5	2	2000

Item No.	In	A mm	Style	Bulk Pack Qty.
CBPSW035A	0.236	6.0	2	2000
CBPSW040A	0.256	6.5	2	2000
CBPSW045A	0.276	7.0	2	2000
CBPSW050A	0.531	13.5	2	2000
CBPSW055A	1.024	26.0	2	2000

## PSM Mini Push Spacer



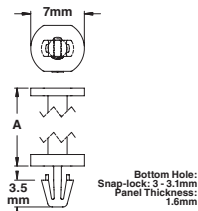
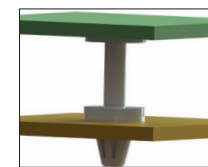
- Supports heavily loaded PC boards
- Often used with Richco LCBS series
- Material: UL94 V-2 Nylon 6/6
- Color: Natural



Item No.	"A" Standoff Height	Bulk Pack Qty.
PSM-2-01	1/8 (3.2)	1000
PSM-3-01	3/16 (4.8)	1000
PSM-4-01	1/4 (6.4)	1000
PSM-5-01	5/16 (7.9)	1000
PSM-6-01	3/8 (9.5)	1000

Item No.	"A" Standoff Height	Bulk Pack Qty.
PSM-7-01	7/16 (11.1)	1000
PSM-8-01	1/2 (12.7)	1000
PSM-9-01	9/16 (14.3)	1000
PSM-10-01	5/8 (15.9)	1000

## PSD Metric Push Spacer

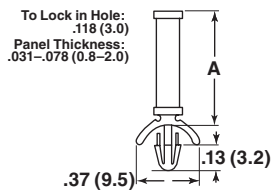


- Sturdy construction supports heavily loaded PCB's
- Allows easy access to underside of board
- Material: Nylon 6/6
- Color: Natural



Material: UL94 V-2	Material: UL94 V-0	"A" Standoff Height mm	Bulk Pack Qty.
PSD-4M-01	PSD-4M-19	4	1000
PSD-6M-01	PSD-6M-19	6	1000
PSD-7M-01	PSD-7M-19	7	1000
PSD-8M-01	PSD-8M-19	8	1000
PSD-10M-01	PSD-10M-19	10	1000
PSD-12M-01	PSD-12M-19	12	1000
PSD-14M-01	PSD-14M-19	14	1000
PSD-18M-01	PSD-18M-19	18	1000

## CBPS Push In Spacers



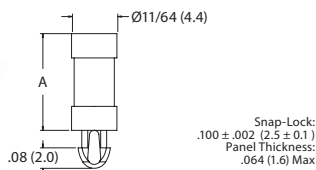
- Specifications:**
- Material: Nylon 6/6
  - Color: Natural
  - Flame Class: UL94 V-2

- Features:**
- The tension wing design offers extra support and a secure fit
  - No fasteners required for mounting due to the one-piece design

Item No.	In	A mm	Bulk Pack Qty.
CBPS105A	0.125	3.2	1000
CBPS110A	0.187	4.8	1000
CBPS115A	0.250	6.4	1000
CBPS120A	0.312	7.9	1000
CBPS125A	0.375	9.5	1000

Item No.	In	A mm	Bulk Pack Qty.
CBPS130A	0.437	11.1	1000
CBPS135A	0.500	12.7	1000
CBPS140A	0.562	14.3	1000
CBPS145A	0.625	15.9	1000
CBPS150A	0.748	19.0	1000

## PST Series Teardrop Push Spacer



- Specifications:**
- Material: Nylon 6/6
  - Color: Natural
  - Flame Class: UL94 V-2



Item No.	In	A mm	Bulk Pack Qty.
PST-1-01	0.063	1.6	1000
PST-2-01	0.125	3.2	1000
PST-3-01	0.188	4.8	1000
PST-4-01	0.250	6.4	1000
PST-5-01	0.313	7.9	1000

Item No.	In	A mm	Bulk Pack Qty.
PST-6-01	0.375	9.5	1000
PST-7-01	0.438	11.1	1000
PST-8-01	0.500	12.7	1000
PST-9-01	0.563	14.3	1000
PST-10-01	0.625	15.9	1000