

Brad® applicom™ Serial Network Interface cards

PCI Universal, PCI Express

molex®

Quickly and easily connect your PC-based industrial applications to the industrial world with applicom™ intelligent communication solutions

applicom™ intelligent communication offers complete and ready-to-use solutions that cover more than 40 protocols within a wide choice of industrial networks and fieldbuses including Ethernet, Profibus, WorldFIP and Serial Links. These communication solutions connect PC-based applications (HMI, SCADA, MES, custom applications) to devices including programmable controllers, I/O modules, Panel PCs, process instruments and other industrial equipment.

With applicom™ smart built-in processor technology, each network interface card (NIC) is able to execute all management and processing (polling, frame management, etc) of communication protocols without using a computer's processing (CPU) time; resulting in extremely fast, efficient application performance.

applicom™ solutions are recommended for SCADA/HMI, and custom automation control systems which require powerful data acquisition to manage a large volume of I/O data. applicom™ cards are successfully installed around the world in sectors as varied as oil and gas, automotive, food processing, technical building management, and transportation.

Features and Benefits

On-board co-processor for fast data acquisition between PC-based applications and industrial devices connected to Serial networks

Eliminates data bottlenecks, ensuring delivery of time critical information

Integrated package includes all protocols; ONE configuration and ONE diagnostic tool whatever the protocols used

Provides all-in-one solution; quick development and commissioning of applicom into system architectures

Combine several cards (up to 8) and run simultaneously from 1 to 32 protocols on a single PC

Optimum choice for HMI/SCADA applications

Applications

Supervision / Scada to monitor plant

HMI; Acquisition of process data on panel pc to manage complex machine

Active front-end acquisition for building management systems such as fire detection, access control, power distribution, HVAC

Measures and bench tests for process simulation, car engine validation, and experimental prototypes

Design tools for custom solutions such as a gateway feature, time table management, alarming, etc.



Brad® applicom™ Serial NIC



Support of Windows® 8 and 2012 Server

Brad[®] applicom[™] Serial Network Interface cards

PCI Universal, PCI Express



Specifications

PRODUCT PACKAGE

Engineering Tools
 Configuration console
 Test and diagnostic tools

Data Servers
 OPC DA v3.0 and v2.05
 Wonderware DAServer
 Wonderware I/O (SuiteLink/FastDDE)

Includes Development Libraries
 Visual Studio (VB/C++/C samples)
 MS Visual Studio 2005 (.Net and C# samples)
 Installed on local disc

Other unsupported samples
 (Borland Delphi, Windev and National Instruments (LabWindows CVI, LabVIEW/VI) on CD Rom only

Supported OS:
 Windows (32-bit & 64-bit): 8, 2012 Server, 7, 2008 Server, Vista, 2003 Server, XP

COMMUNICATION PORTS

1x Serial Port
 D-Sub, 9pin, male
 2 LEDs (TX/RX)
 50 bps to 38.4 Kbps

Electrical Interface
 RS485/RS422 with galvanic insulation (500 V)

TECHNICAL DATA

Bus Format
 PCI Universal bus 3.3V/5V (PCI-X compatible)
 PCI Express 1x

AMD SC520
 16 Mb SDRAM
 4 Mb Flash Memory

Interruption: Hardware Plug & Play
 DPRAM Address: Hardware Plug & Play
 Consumption: 5.5W

Discrete Input: Opto-coupled discrete input,
 Voltage -> +10 to +30 DC or 24 V AC (50-60 Hz)

Discrete Output: «Watchdog» output contact free
 from potential, (floating) (24V DC, 0.25A)

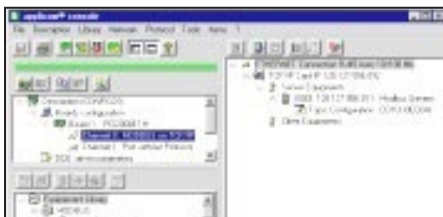
Dimension: 168mm x 107mm

PROTOCOLS

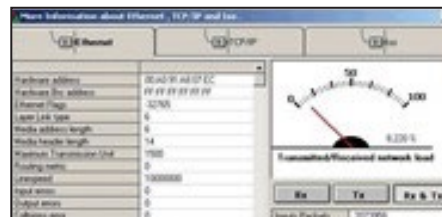
Serial
 Allen-Bradley – DF1 Master
 GE Fanuc – SNP-X Master
 Elsag Bailey – Data Link Master
 Modbus Master / Slave (ASCII & RTU)
 Moller Group – Sucoma Master
 Omron – Sysmac Way Master
 Saia – S-Bus Master
 Siemens – 3964/3964R Master
 Siemens – AS511 Master
 Siemens – PPI/PPI+ Master
 Siemens – TI-Dir Master
 Schneider – Uni-Telway Master/Slave

CONFORMANCES

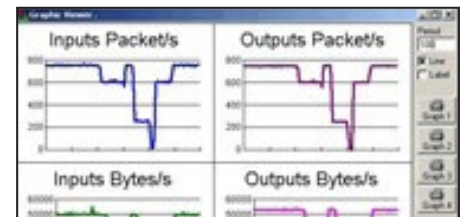
CE
 RoHS
 OPC Certified
 PCI Express certified
 Rockwell Encompass
 Schneider Collaborative



Engineering Console



OPC Server



Diagnostic Tools

Ordering Information

Order No.	Engineering No.	Description
112020-5017	APP-SR1-PCU-C	applicom PCU1000 PCI Network Interface Card for Serial
112020-5018	APP-SR1-PCIE	applicom PCIE1000 PCI Express Network Interface Card for Serial
112026-0003	APP-INT-232-N	1x RS232 electrical interface without galvanic insulation
112026-0002	APP-INT-232-G	1x RS232 electrical interface with galvanic insulation
112026-0005	APP-INT-485-N	2x RS485/RS422 electrical interface without galvanic insulation
112026-0004	APP-INT-485-G	1x RS485/RS422 electrical interface with galvanic insulation

Windows[®] and the Windows logo are trademarks of the Microsoft group of companies
 PROFIBUS is a trademark of PROFIBUS International
 PCI Universal, PCI Express and the PCI Express logo are registered trademarks of PCI-SIG[®]
 Encompass is a trademark of Rockwell Automation

www.molex.com/link/bradnics.html