

E-Series RF 1:9 Transformer
10 – 75 MHz

ETC9-1T-5
V1

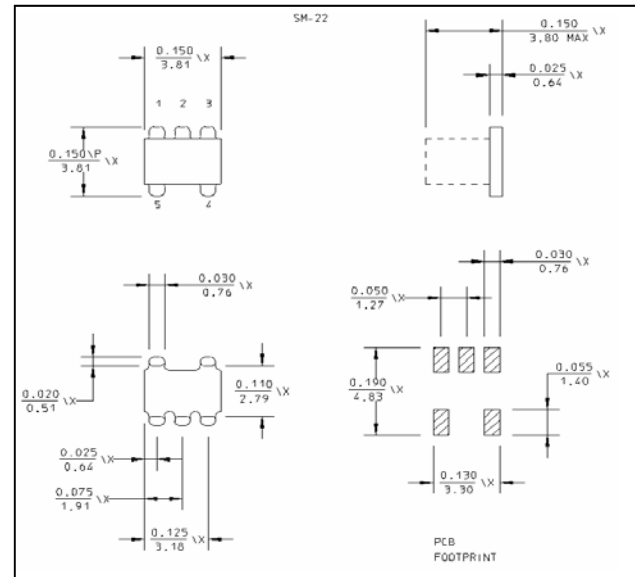
Features

- 1:9 Impedance Ratio
- CT on Secondary
- Surface Mount
- Tape and reel packaging available

Description

M/A-COM's ETC9-1T-5 is a 9:1 RF transmission line step-up transformer in a low cost, surface mount package. Ideally suited for high volume cellular and wireless applications. Typical applications include single to balanced mode conversion and impedance matching. Parts are packaged in tape & reel.

SM - 22 Package



Electrical Specifications: $T_A = 25^\circ\text{C}$, $Z_0 = 50\Omega$ ¹

Parameter	Test Conditions	Frequency	Units	Min	Typ	Max
RF Frequency	—	10 - 75	MHz	—	—	—
Insertion Loss	F_L-f_U	10 - 75	dB	—	0.8	2.0
Amplitude Unbalance	F_L-f_U	10 - 75	dB	—	0.1	1
Phase Unbalance	F_L-f_U	10 - 75	Degrees	—	—	7
Return Loss	F_L-f_U	10 - 75	dB	—	20.5	14

Absolute Maximum Ratings¹

Parameter	Absolute Maximum
RF Power	250 mW
DC Current	30 mA
Operating Temperature	-40°C to +85°C
Storage Temperature	-55°C to +125°C

1. Operation of this device above any one of these parameters may cause permanent damage.

Ordering Information

Part Number	Package
ETC9-1T-5TR	Tape and Reel (2000 piece Reel)

E-Series RF 1:9 Transformer
10 – 75 MHz

ETC9-1T-5
V1

Pin Configuration

Pin No.	Function
1	Secondary Dot
2	Secondary CT
3	Secondary
4	Primary
5	Primary Dot

Schematic

