

Marshalling patchboard - PTMC 1,5/32-3 19Z



3270311

<https://www.phoenixcontact.com/us/products/3270311>

Please be informed that the data shown in this PDF document is generated from our Online Catalog. Please find the complete data in the user documentation. Our General Terms of Use for Downloads are valid.



Marshalling patchboard, Labeled from 1 - 32, nom. voltage: 500 V, nominal current: 17.5 A, connection method: Push-in connection, cross section: 0.14 mm² - 2.5 mm², mounting: Wall mounting, 19" rack, color: gray, color of connection elements: gray/white

Your advantages

- Clear representation of actuation and terminal points through vertical conductor routing
- Tool-free wiring in a confined space thanks to compact size
- For mounting in 19" racks
- High contact quality thanks to push-in technology as a replacement for Wire-Wrap®, TERMI-POINT®, etc.

Marshalling patchboard - PTMC 1,5/32-3 19Z



3270311

<https://www.phoenixcontact.com/us/products/3270311>

Commercial Data

Item number	3270311
Packing unit	1 pc
Minimum order quantity	1 pc
Sales Key	B02
Product Key	BE6212
Catalog Page	Page 62 (C-1-2019)
GTIN	4055626058337
Weight per Piece (including packing)	148.4 g
Weight per Piece (excluding packing)	99.99 g
Customs tariff number	85369010
Country of origin	PL

Marshalling patchboard - PTMC 1,5/32-3 19Z



3270311

<https://www.phoenixcontact.com/us/products/3270311>

Technical Data

Notes

General	Labeled from 1 - 32
---------	---------------------

Product properties

Product type	Marshalling terminal
Number of positions	32
Number of connections	192
Number of rows	1

Insulation characteristics

Overvoltage category	III
Degree of pollution	3

Electrical properties

Rated surge voltage	6 kV
Maximum power dissipation for nominal condition	0.56 W

Connection data

Number of connections per level	192
Nominal cross section	1.5 mm ²
Rated cross section AWG	14
Stripping length	8 mm ... 10 mm
Internal cylindrical gage	A1
Conductor cross section solid	0.14 mm ² ... 2.5 mm ²
Cross section AWG	26 ... 14
Conductor cross section flexible	0.14 mm ² ... 1.5 mm ²
Conductor cross section, flexible [AWG]	26 ... 14
Flexible conductor cross section flexible (ferrule, w/o plastic sleeve)	0.14 mm ² ... 1.5 mm ²
Flexible conductor cross section (ferrule with plastic sleeve)	0.14 mm ² ... 1.5 mm ²
Nominal current	17.5 A
Maximum load current	24 A (in case of a 2.5 mm ² conductor cross section, the maximum load current must not be exceeded by the total current of all connected conductors.)
	12 A (in case of a 2.5 mm ² conductor cross section, the maximum load current must not be exceeded by the total current of all connected conductors.)
Nominal voltage	500 V

Connection cross sections directly pluggable

Conductor cross section solid	0.34 mm ² ... 2.5 mm ²
Conductor cross section, solid [AWG]	20 ... 14
Flexible conductor cross section flexible (ferrule, w/o plastic sleeve)	0.34 mm ² ... 1.5 mm ²

Marshalling patchboard - PTMC 1,5/32-3 19Z

3270311

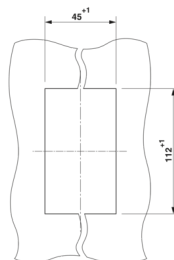
<https://www.phoenixcontact.com/us/products/3270311>

Flexible conductor cross section (ferrule with plastic sleeve)

0.34 mm² ... 1.5 mm²

Dimensions

Dimensional drawing



Width

44 mm

Height

30 mm

Length

111 mm

Material specifications

Color

gray

Color of connection elements

gray/white

Flammability rating according to UL 94

V0

Insulating material group

I

Insulating material

PA

Static insulating material application in cold

-60 °C

Temperature index of insulation material (DIN EN 60216-1 (VDE 0304-21))

125 °C

Relative insulation material temperature index (Elec., UL 746 B)

130 °C

Fire protection for rail vehicles (DIN EN 45545-2) R22

HL 1 - HL 3

Fire protection for rail vehicles (DIN EN 45545-2) R23

HL 1 - HL 3

Fire protection for rail vehicles (DIN EN 45545-2) R24

HL 1 - HL 3

Fire protection for rail vehicles (DIN EN 45545-2) R26

HL 1 - HL 3

Calorimetric heat release NFPA 130 (ASTM E 1354)

27,5 MJ/kg

Surface flammability NFPA 130 (ASTM E 162)

passed

Specific optical density of smoke NFPA 130 (ASTM E 662)

passed

Smoke gas toxicity NFPA 130 (SMP 800C)

passed

Electrical tests

Surge voltage test

Test voltage setpoint

7.3 kV

Result

Test passed

Temperature-rise test

Requirement temperature-rise test

Increase in temperature ≤ 45 K

Result

Test passed

Short-time withstand current 1.5 mm²

0.18 kA

Short-time withstand current 2.5 mm²

0.3 kA

Marshalling patchboard - PTMC 1,5/32-3 19Z



3270311

<https://www.phoenixcontact.com/us/products/3270311>

Result	Test passed
Power-frequency withstand voltage	
Test voltage setpoint	1.89 kV
Result	Test passed

Mechanical properties

Mechanical data

Open side panel	No
-----------------	----

Mechanical tests

Mechanical strength

Result	Test passed
--------	-------------

Attachment on the carrier

DIN rail/fixing support	NS 35
Test force setpoint	1 N
Result	Test passed

Test for conductor damage and slackening

Rotation speed	10 rpm
Revolutions	135
Conductor cross section/weight	0.14 mm ² / 0.2 kg
	1.5 mm ² / 0.4 kg
	2.5 mm ² / 0.7 kg
Result	Test passed

Environmental and real-life conditions

Aging

Temperature cycles	192
Result	Test passed

Needle-flame test

Time of exposure	30 s
Result	Test passed

Oscillation/broadband noise

Specification	DIN EN 50155 (VDE 0115-200):2008-03
Spectrum	Service life test category 1, class B, body mounted
Frequency	$f_1 = 5 \text{ Hz}$ to $f_2 = 150 \text{ Hz}$
ASD level	0.964 (m/s ²) ² /Hz
Acceleration	0.58g
Test duration per axis	5 h
Test directions	X-, Y- and Z-axis
Result	Test passed

Marshalling patchboard - PTMC 1,5/32-3 19Z



3270311

<https://www.phoenixcontact.com/us/products/3270311>

Shocks

Specification	DIN EN 50155 (VDE 0115-200):2008-03
Pulse shape	Half-sine
Acceleration	5g
Shock duration	30 ms
Number of shocks per direction	3
Test directions	X-, Y- and Z-axis (pos. and neg.)
Result	Test passed

Ambient conditions

Ambient temperature (operation)	-60 °C ... 105 °C (max. short-term operating temperature RTI Elec.)
Ambient temperature (storage/transport)	-25 °C ... 60 °C (for a short time, not exceeding 24 h, -60 °C to +70 °C)
Ambient temperature (assembly)	-5 °C ... 70 °C
Ambient temperature (actuation)	-5 °C ... 70 °C
Permissible humidity (storage/transport)	30 % ... 70 %

Standards and regulations

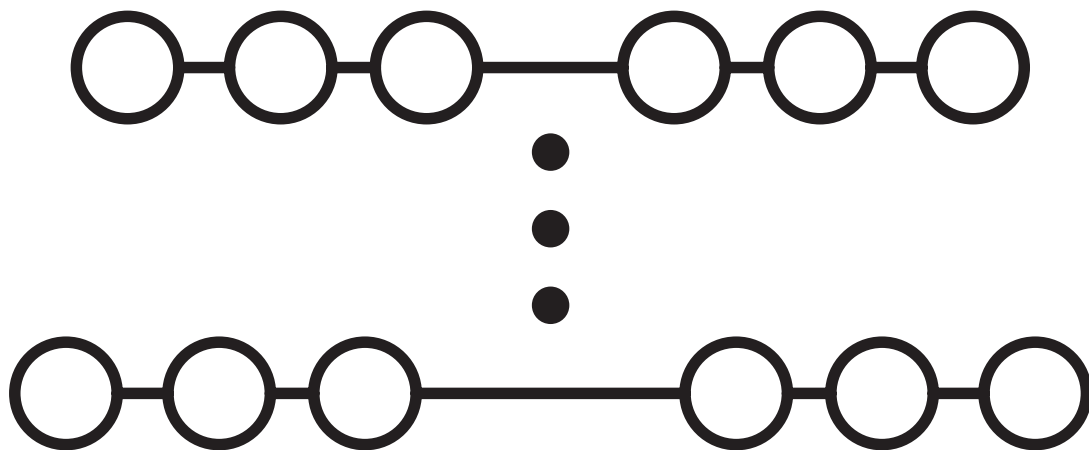
Connection in acc. with standard	IEC 60947-7-1
----------------------------------	---------------

Mounting

Mounting type	Wall mounting
	19" rack

Drawings

Circuit diagram

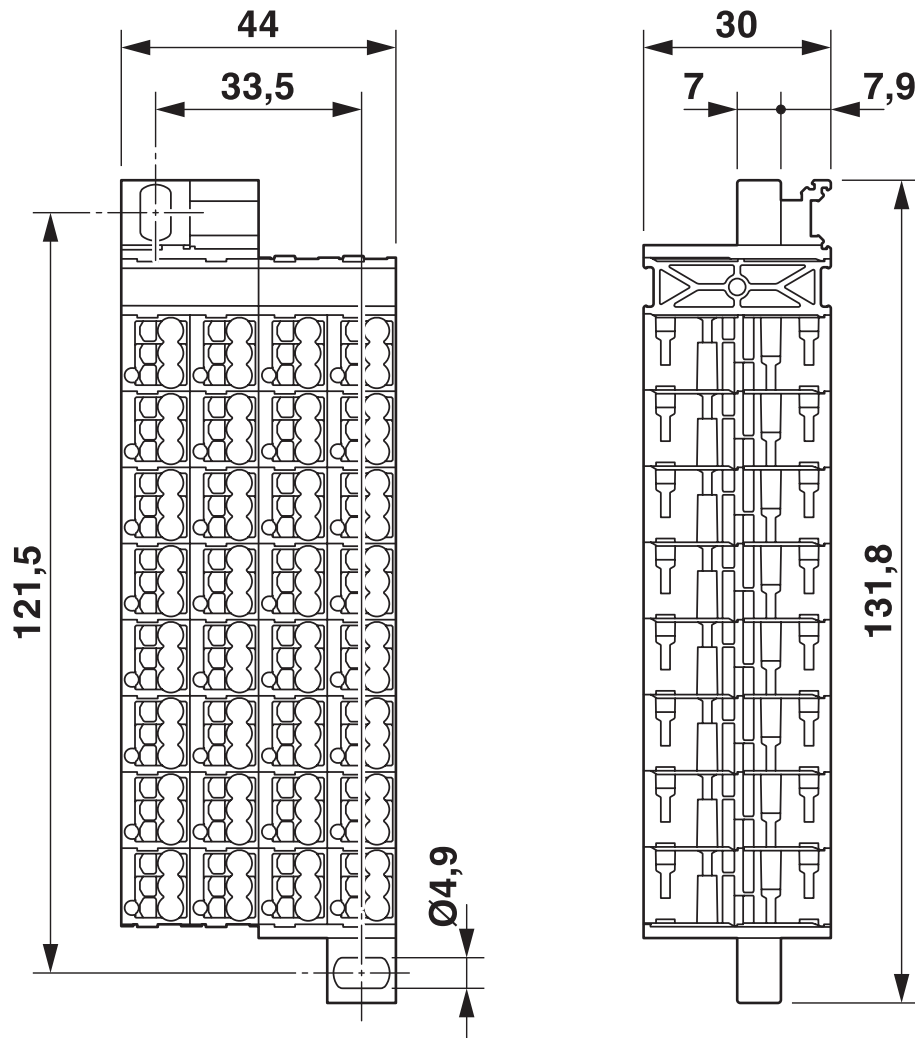


Marshalling patchboard - PTMC 1,5/32-3 19Z

3270311

<https://www.phoenixcontact.com/us/products/3270311>

Dimensional drawing



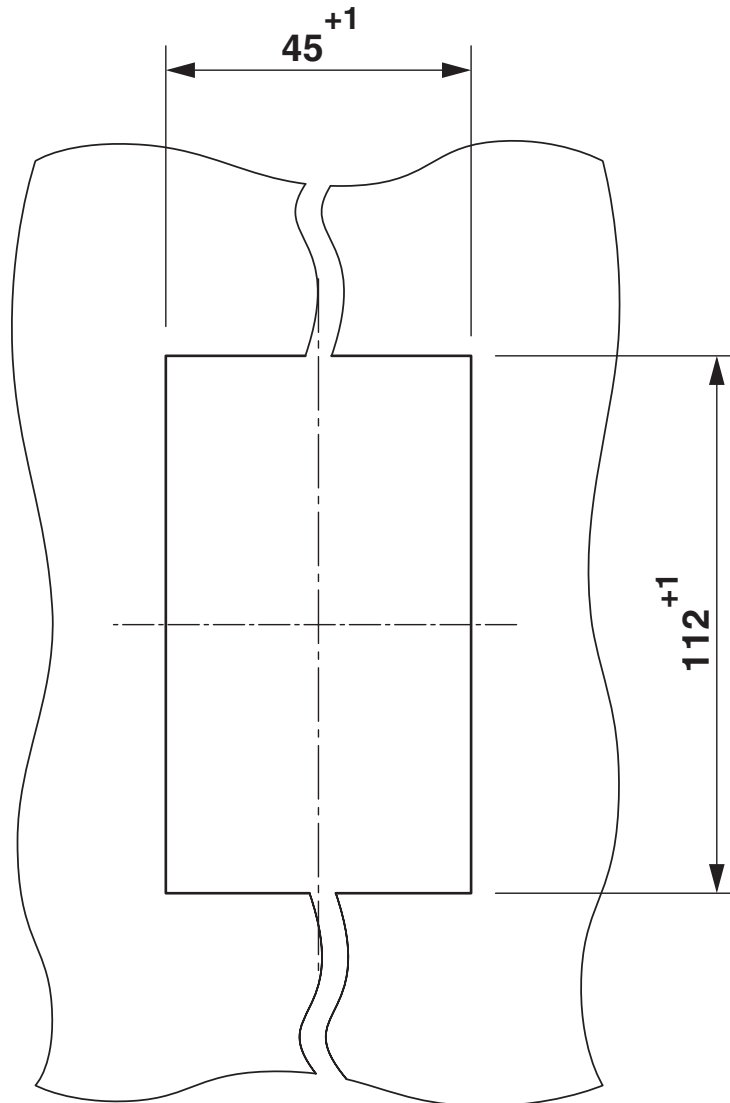
Marshalling patchboard - PTMC 1,5/32-3 19Z



3270311

<https://www.phoenixcontact.com/us/products/3270311>

Dimensional drawing



Panel cutout


Marshalling patchboard - PTMC 1,5/32-3 19Z





3270311

<https://www.phoenixcontact.com/us/products/3270311>

Approvals

 CSA Approval ID: 13631				
	Nominal Voltage U_N	Nominal Current I_N	Cross Section AWG	Cross Section mm^2
Use group B				
	300 V	10 A	24 - 16	-
Use group C				
	300 V	10 A	24 - 16	-
Use group D				
	300 V	10 A	24 - 16	-

 EAC Approval ID: RU C-DE.BL08.B.00682				
---	--	--	--	--

 cULus Recognized Approval ID: E60425				
	Nominal Voltage U_N	Nominal Current I_N	Cross Section AWG	Cross Section mm^2
Use group B				
	300 V	10 A	24 - 16	-
Use group C				
	300 V	10 A	24 - 16	-

Marshalling patchboard - PTMC 1,5/32-3 19Z



3270311

<https://www.phoenixcontact.com/us/products/3270311>

Classifications

ECLASS

ECLASS-9.0	27141120
ECLASS-10.0.1	27141120
ECLASS-11.0	27141120

ETIM

ETIM 8.0	EC000897
----------	----------

UNSPSC

UNSPSC 21.0	39121400
-------------	----------

Marshalling patchboard - PTMC 1,5/32-3 19Z



3270311

<https://www.phoenixcontact.com/us/products/3270311>

Environmental Product Compliance

China RoHS	Environmentally friendly use period: unlimited = EFUP-e
	No hazardous substances above threshold values

Marshalling patchboard - PTMC 1,5/32-3 19Z



3270311

<https://www.phoenixcontact.com/us/products/3270311>

Accessories



Note: Applying some accessories below might limit this product.

Actuation tool

Actuation tool - ST-BW 0 - 1200135

<https://www.phoenixcontact.com/us/products/1200135>



Actuation tool, for all 1.5 mm² spring cages from PT 1,5/S and FT 1,5/S

Screwdriver

Screwdriver - SZF 0-0,4X2,5 - 1204504

<https://www.phoenixcontact.com/us/products/1204504>



Actuation tool, for ST terminal blocks, also suitable for use as a bladed screwdriver, size: 0.4 x 2.5 x 75 mm, 2-component grip, with non-slip grip

Marshalling patchboard - PTMC 1,5/32-3 19Z



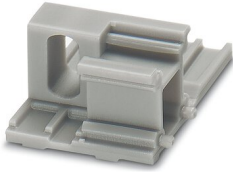
3270311

<https://www.phoenixcontact.com/us/products/3270311>

Flange cover

Flange cover - DF-PTMC-O - 3270400

<https://www.phoenixcontact.com/us/products/3270400>



Flange cover, for direct mounting on top and for accommodating the marking, length: 30 mm, width: 22 mm, height: 13 mm, color: gray

Flange cover

Flange cover - DF-PTMC-U - 3270401

<https://www.phoenixcontact.com/us/products/3270401>



Flange cover, for direct mounting below, length: 29.1 mm, width: 22 mm, height: 12.8 mm, color: gray

Marshalling patchboard - PTMC 1,5/32-3 19Z



3270311

<https://www.phoenixcontact.com/us/products/3270311>

Reducing plug

Reducing plug - RPS - 0201647

<https://www.phoenixcontact.com/us/products/0201647>



Reducing plug, color: gray


Wire bridge

Wire bridge - DB 50- 90 BU - 2821180

<https://www.phoenixcontact.com/us/products/2821180>

Flexible wire loop bridge, 50-pos., conductor cross-section: 0.5 mm^2 , loop length: 90 mm, ferrule length: 8 mm, color: blue



 Max. current carrying capacity: 8 A

Marshalling patchboard - PTMC 1,5/32-3 19Z



3270311

<https://www.phoenixcontact.com/us/products/3270311>


Wire bridge

Wire bridge - DB 50- 90 BK - 2820916

<https://www.phoenixcontact.com/us/products/2820916>

Flexible wire loop bridge, 50-pos., conductor cross-section: 0.5 mm^2 , loop length: 90 mm, ferrule length: 8 mm, color: black



 Max. current carrying capacity: 8 A


Wire bridge

Wire bridge - DB 50- 90 GY - 2820929

<https://www.phoenixcontact.com/us/products/2820929>

Flexible wire loop bridge, 50-pos., conductor cross-section: 0.5 mm^2 , loop length: 90 mm, ferrule length: 8 mm, color: gray



 Max. current carrying capacity: 8 A

Marshalling patchboard - PTMC 1,5/32-3 19Z



3270311

<https://www.phoenixcontact.com/us/products/3270311>

Wire bridge

Wire bridge - DB 50- 90 RD - 2864639

<https://www.phoenixcontact.com/us/products/2864639>

Flexible wire loop bridge, 50-pos., conductor cross-section: 0.5 mm², loop length: 90 mm, ferrule length: 8 mm, color: red



 Max. current carrying capacity: 8 A

Insulating sleeve

Insulating sleeve - MPS-IH WH - 0201663

<https://www.phoenixcontact.com/us/products/0201663>

Insulating sleeve, color: white



Marshalling patchboard - PTMC 1,5/32-3 19Z



3270311

<https://www.phoenixcontact.com/us/products/3270311>

Insulating sleeve

Insulating sleeve - MPS-IH RD - 0201676

<https://www.phoenixcontact.com/us/products/0201676>

Insulating sleeve, color: red



Insulating sleeve

Insulating sleeve - MPS-IH BU - 0201689

<https://www.phoenixcontact.com/us/products/0201689>

Insulating sleeve, color: blue



Marshalling patchboard - PTMC 1,5/32-3 19Z



3270311

<https://www.phoenixcontact.com/us/products/3270311>

Insulating sleeve

Insulating sleeve - MPS-IH YE - 0201692

<https://www.phoenixcontact.com/us/products/0201692>

Insulating sleeve, color: yellow



Insulating sleeve

Insulating sleeve - MPS-IH GN - 0201702

<https://www.phoenixcontact.com/us/products/0201702>

Insulating sleeve, color: green



Marshalling patchboard - PTMC 1,5/32-3 19Z



3270311

<https://www.phoenixcontact.com/us/products/3270311>

Insulating sleeve

Insulating sleeve - MPS-IH GY - 0201728

<https://www.phoenixcontact.com/us/products/0201728>

Insulating sleeve, color: gray



Insulating sleeve

Insulating sleeve - MPS-IH BK - 0201731

<https://www.phoenixcontact.com/us/products/0201731>

Insulating sleeve, color: black



Marshalling patchboard - PTMC 1,5/32-3 19Z



3270311

<https://www.phoenixcontact.com/us/products/3270311>

Adapter

Adapter - DF-PTMC-NS - 3270403

<https://www.phoenixcontact.com/us/products/3270403>

Adapter, for mounting on a DIN rail, length: 64 mm, width: 22 mm, color: gray

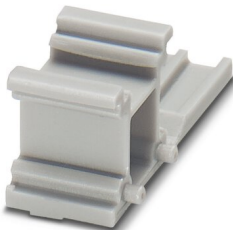


Marker adapter

Marker adapter - DF-PTMC-ZB - 3270410

<https://www.phoenixcontact.com/us/products/3270410>

Marker adapter, for direct mounting on top and for accommodating the marking, length: 30 mm, width: 11 mm, height: 13 mm, color: gray



Marshalling patchboard - PTMC 1,5/32-3 19Z



3270311

<https://www.phoenixcontact.com/us/products/3270311>

Test plugs

Test plugs - MPS-MT - 0201744

<https://www.phoenixcontact.com/us/products/0201744>



Test plugs, with solder connection up to 1 mm² conductor cross section, color: gray

Phoenix Contact 2022 © - all rights reserved

<https://www.phoenixcontact.com>

Phoenix Contact USA
586 Fulling Mill Road
Middletown, PA 17057, United States
(+717) 944-1300
info@phoenixcon.com