

## General Description

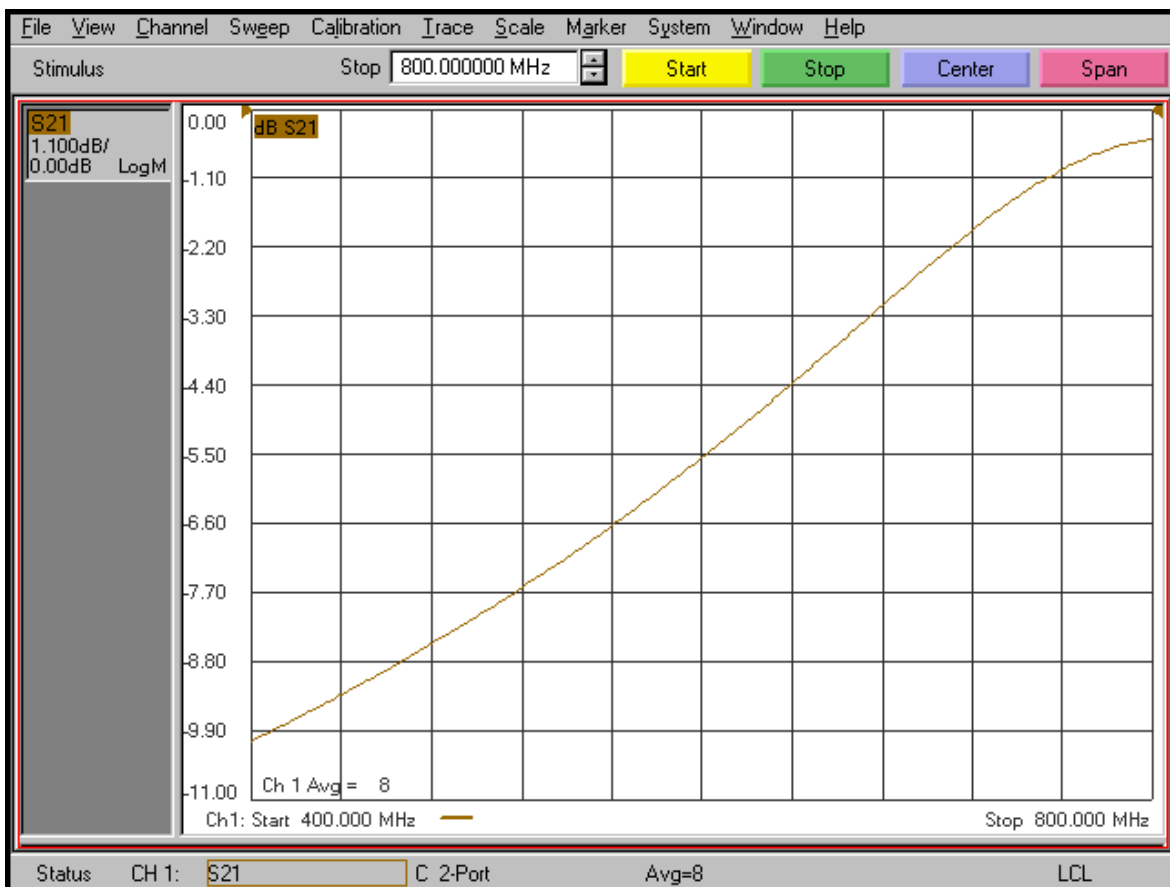
KR Electronics part number 3290-SMA is a 400 to 800 MHz equalizer filter. The slope is 10 dB  $\pm$ 1 dB. Other frequencies are available. Please consult the factory.

## Features

- 400 to 800 MHz Equalizer Filter
- 10 dB  $\pm$ 1 dB
- 50  $\Omega$  Source and Load
- SMA Connectors
- Other frequencies available

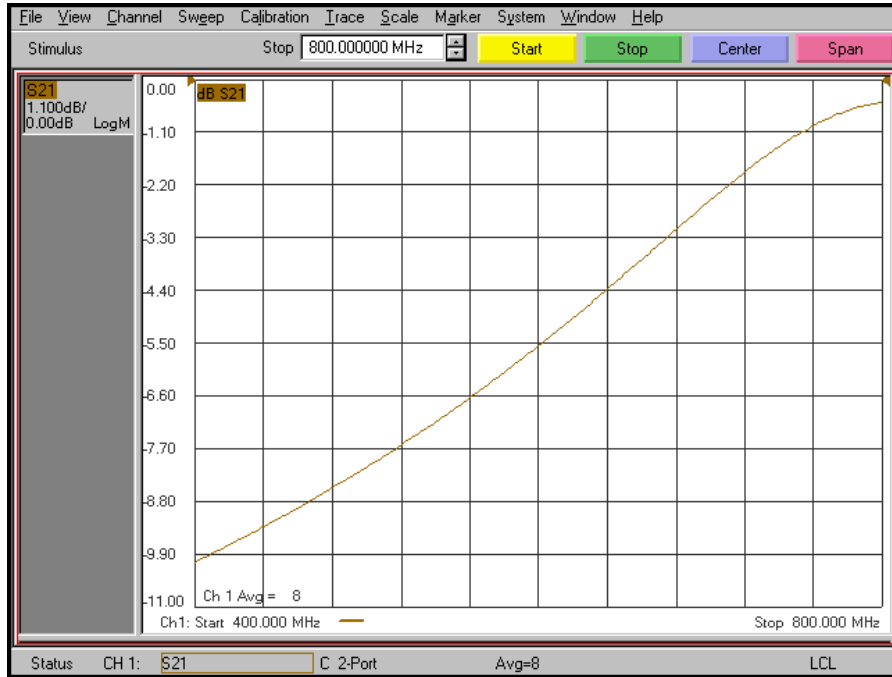
## Typical Performance

### Overall Response (1 dB/div)

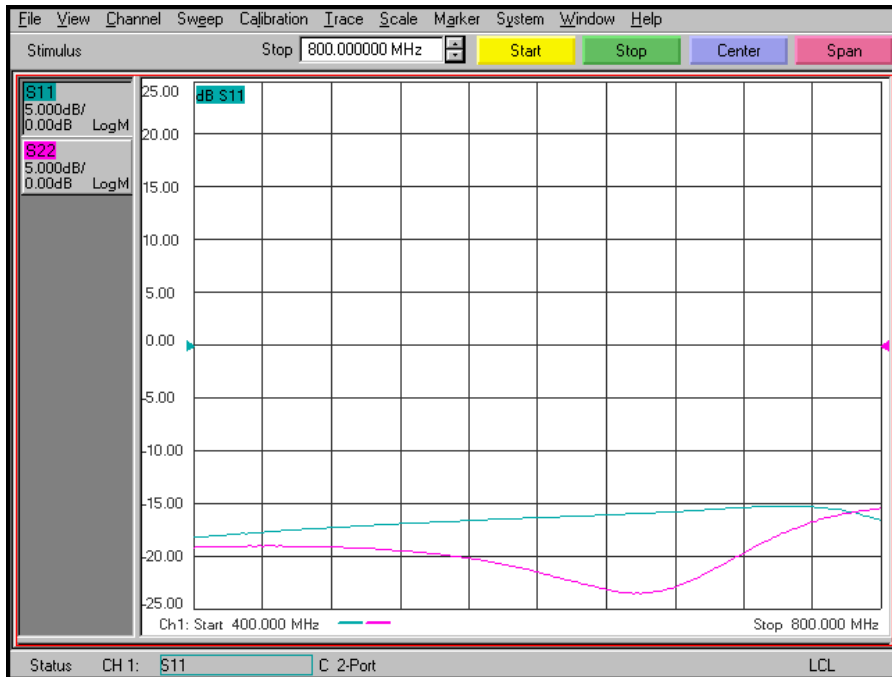


# KR Electronics 3290-SMA

## Passband Amplitude (1 dB/div)



## Return Loss (5 dB/div)



KR Electronics, Inc.  
91 Avenel Street  
Avenel, NJ 07001

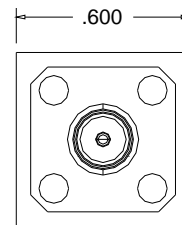
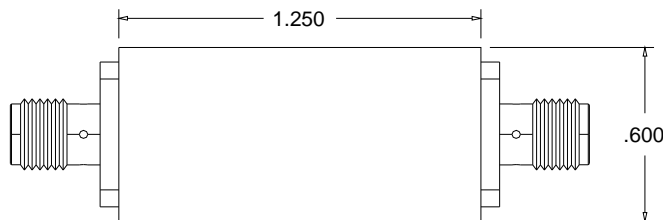
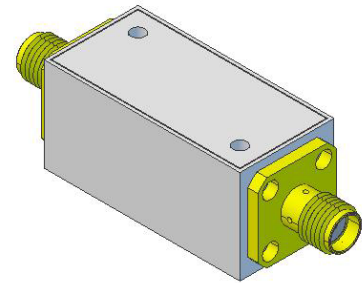
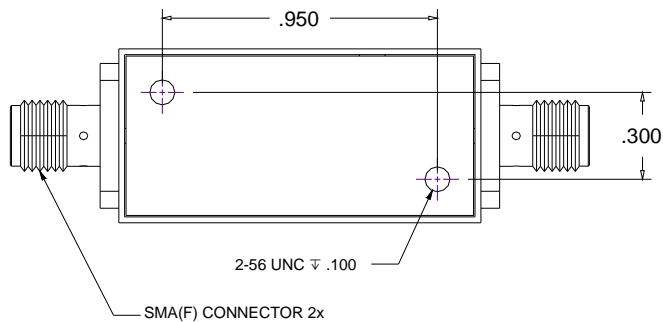
Web [www.krfilters.com](http://www.krfilters.com)  
Email [sales@krfilters.com](mailto:sales@krfilters.com)  
Phone (732) 636-1900  
Fax (732) 636-1982

# KR Electronics 3290-SMA

## Specifications

| Parameter                         | Specification  |                 |
|-----------------------------------|----------------|-----------------|
| Filter type                       | Equalizer      |                 |
| Frequency Band                    | 400 to 800 MHz |                 |
| Insertion Loss at 800 MHz         | 1 dBa max      | 0.6 dBa typical |
| Loss at 800 MHz - Loss at 400 MHz | 10 dB ±1 dB    |                 |
| Source and Load                   | 50 Ω           |                 |

## Physical Dimensions



### Notes:

1. Dimensions in inches
2. Metal Case
3. SMA(F) Connectors
4. Also available in surface mount package

KR Electronics, Inc.  
91 Avenel Street  
Avenel, NJ 07001

Web [www.krfilters.com](http://www.krfilters.com)  
Email [sales@krfilters.com](mailto:sales@krfilters.com)  
Phone (732) 636-1900  
Fax (732) 636-1982