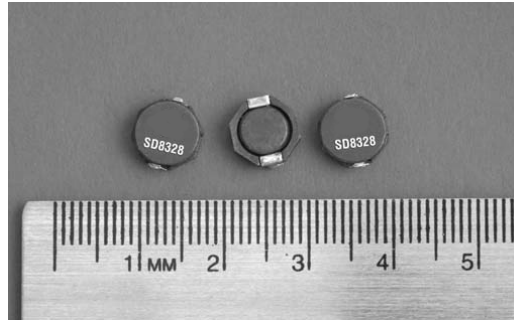


# SD8328

## Low profile shielded drum core power inductors



### Product features

- Low profile shielded drum core
- 9.5 mm x 8.3 mm x 3.0 mm surface mount inductor
- Ferrite core material
- Inductance range from 2.7  $\mu$ H to 100  $\mu$ H
- Current range from 0.8 A to 6.6 A
- Frequency range up to 1 MHz

### Applications

- Buck or boost inductor
- Noise filtering output filter chokes
- Notebook and laptop power/display
- LCD Monitors/displays/televisions
- Battery chargers, LCD bias supplies
- Battery and Industrial power systems
- Computer, DVD and media players
- Portable power devices
- DC-DC converters

### Environmental data

- Storage temperature range (component): -40 °C to +125 °C
- Operating temperature range: -40 °C to +125 °C (ambient plus self-temperature rise)
- Solder reflow temperature: J-STD-020 (latest revision) compliant

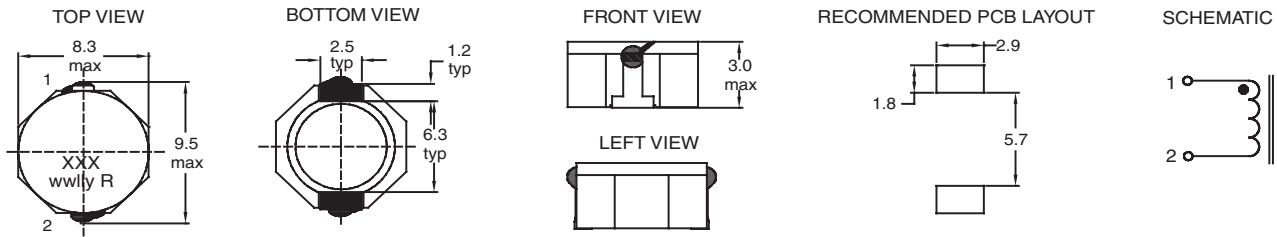


**Product specifications**

Part Number	Rated Inductance (µH)	OCL <sup>1</sup> µH±30%	I <sub>rms</sub> <sup>2</sup> (A)	I <sub>sat</sub> <sup>3</sup> (A)	DCR mΩ @ +20 °C Typ	DCR mΩ @ +20 °C Max	K-factor <sup>4</sup>
SD8328-2R5-R	2.5	2.7	6.6	4.5	12	15.6	43
SD8328-3R3-R	3.3	3.4	6.1	4.0	14	18.0	33
SD8328-4R7-R	4.7	5.0	4.5	3.6	19	24.7	23
SD8328-7R3-R	7.3	7.6	3.4	2.9	30	39	15
SD8328-100-R	10	9.1	3.3	2.6	36	45	11
SD8328-150-R	15	14.5	2.35	2.0	53	69	7.2
SD8328-220-R	22	21.1	1.85	1.7	76	99	4.9
SD8328-330-R	33	31.9	1.45	1.4	120	156	3.3
SD8328-470-R	47	44.9	1.30	1.2	150	194	2.3
SD8328-680-R	68	64.2	0.98	1.0	220	286	1.6
SD8328-101-R	100	97.0	0.80	0.8	330	430	1.1

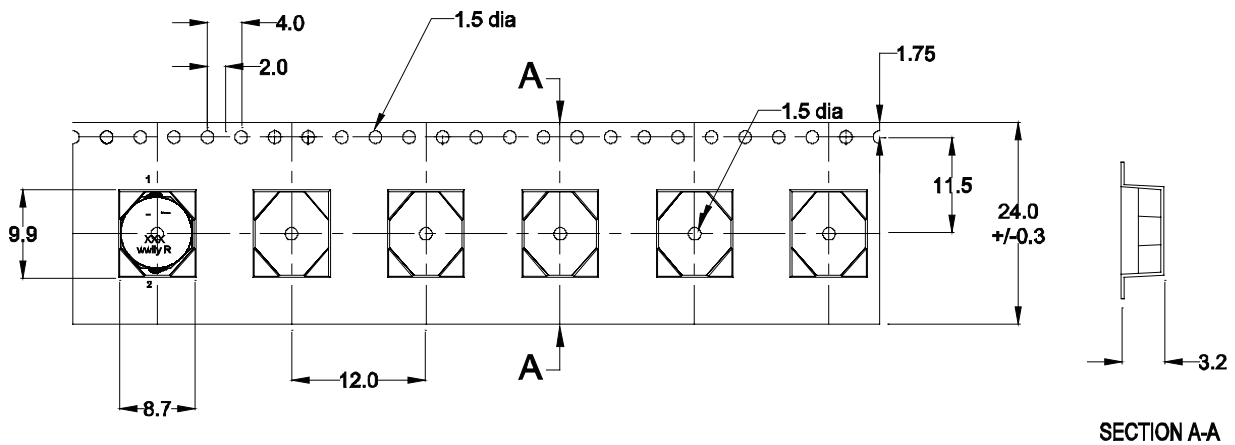
- Open Circuit Inductance Test Parameters: 100 kHz, 0.1 V<sub>rms</sub>, 0.0 Adc.
- I<sub>rms</sub>: DC current for an approximate ΔT of 40 °C without core loss. Derating is necessary for AC currents. PCB layout, trace thickness and width, air-flow, and proximity of other heat generating components will affect the temperature rise. It is recommended that the temperature of the part not exceed +125 °C under worst case operating conditions verified in the end application.
- I<sub>sat</sub> Amps peak for approximately 35% rolloff (@ +25 °C)
- K-factor: Used to determine B<sub>p-p</sub> for core loss (see graph).  
 $B_{p-p} = K \cdot L \cdot \Delta I$ , B<sub>p-p</sub> (mT), K: (K factor from table), L: (Inductance in µH), ΔI (Peak to peak ripple current in Amps).
- Part Number Definition: SD8328-xxx-R  
 SD8328 = Product code and size; -xxx = Inductance value in µH;  
 R = decimal point; If no R is present, third character equals number of zeros.  
 -R suffix = RoHS compliant

**Dimensions-mm**



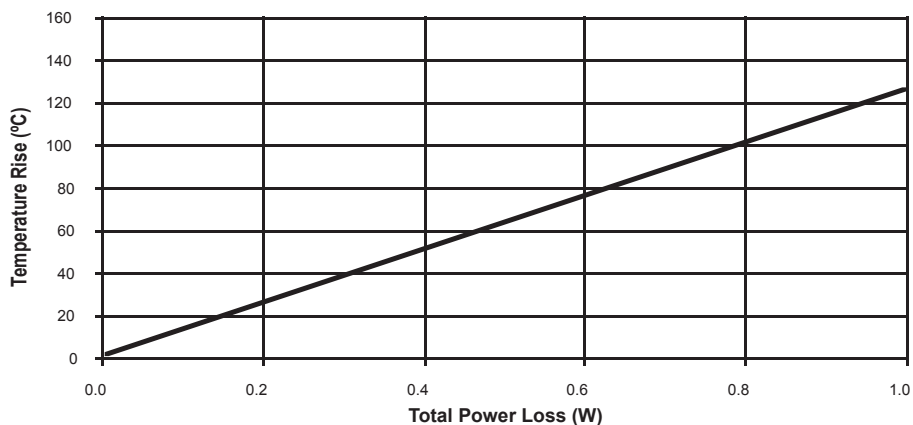
Part Marking: xxx = Inductance value in µH. (R = Decimal point). If no R is present, third character = number of zeros  
 wwlyy - or - wwlyy = Date code  
 R = Revision level  
 Do not route traces or vias underneath the inductor

**Packaging information-mm**

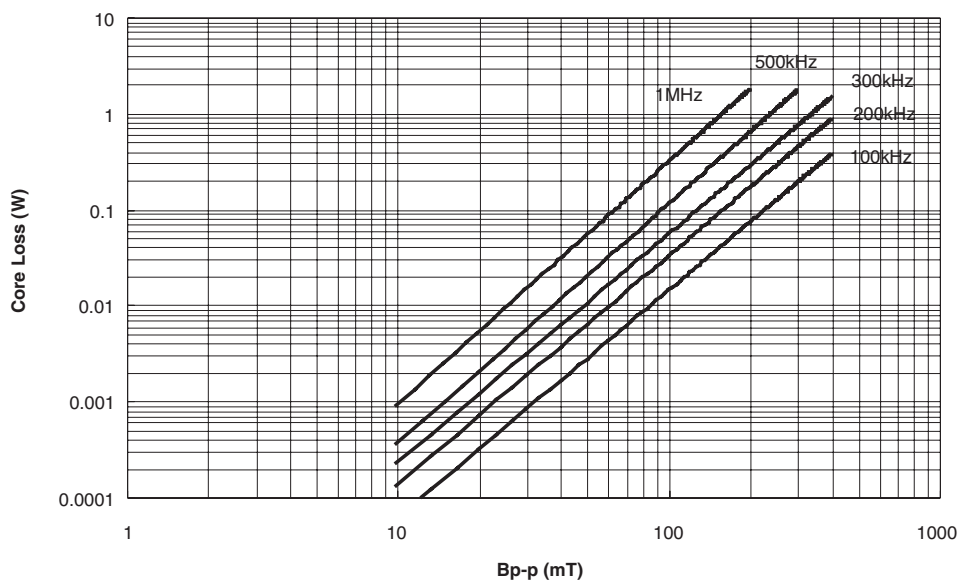


Supplied in tape-and-reel packaging, 1280 parts per reel, 13" diameter reel.

**Temperature rise vs total loss**

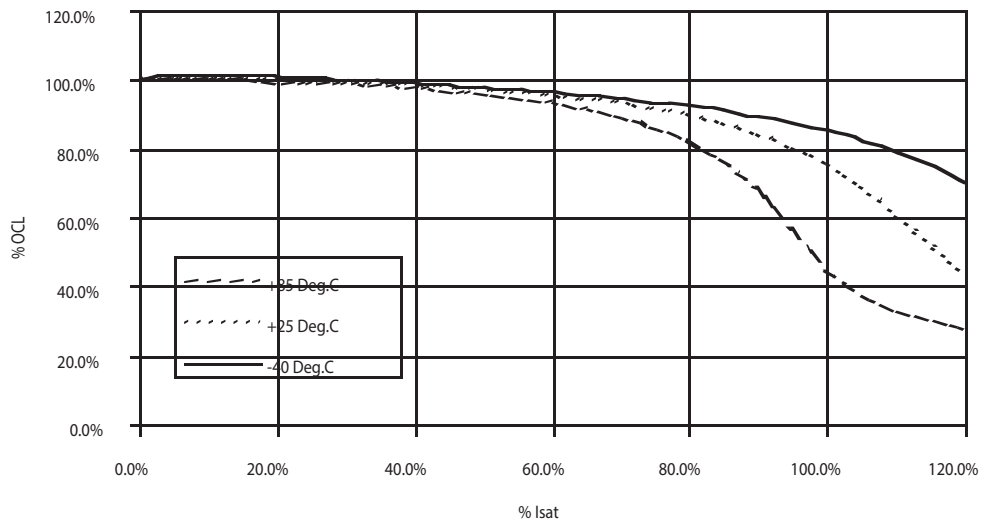


**Core loss vs Bp-p**

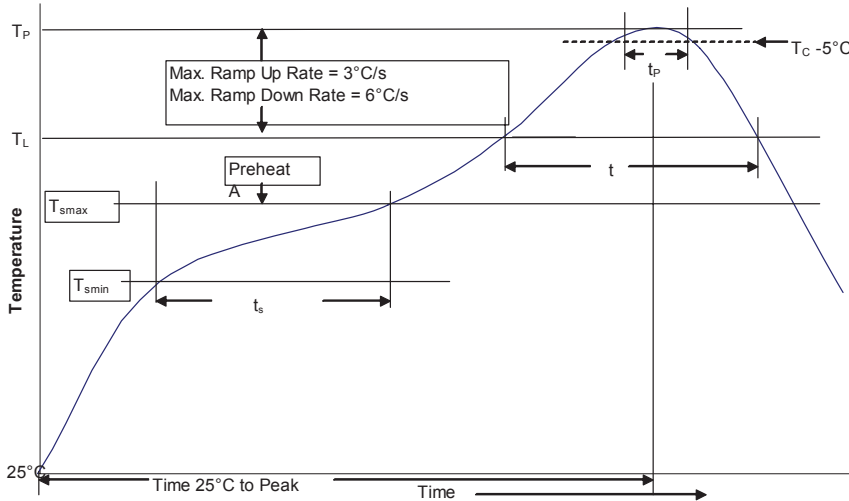


**Inductance characteristics**

OCL Vs. Isat



**Solder Reflow Profile**



**Table 1 - Standard SnPb Solder ( $T_p$ )**

Package Thickness	Volume $\text{mm}^3$ <350	Volume $\text{mm}^3$ $\geq 350$
<2.5mm	235°C	220°C
$\geq 2.5\text{mm}$	220°C	220°C

**Table 2 - Lead (Pb) Free Solder ( $T_p$ )**

Package Thickness	Volume $\text{mm}^3$ <350	Volume $\text{mm}^3$ 350 - 2000	Volume $\text{mm}^3$ >2000
<1.6mm	260°C	260°C	260°C
1.6 – 2.5mm	260°C	250°C	245°C
>2.5mm	250°C	245°C	245°C

**Reference JDEC J-STD-020**

Profile Feature	Standard SnPb Solder	Lead (Pb) Free Solder
Preheat and Soak	• Temperature min. ( $T_{smin}$ )	100°C
	• Temperature max. ( $T_{smax}$ )	150°C
	• Time ( $T_{smin}$ to $T_{smax}$ ) ( $t_s$ )	60-120 Seconds
Average ramp up rate $T_{smax}$ to $T_p$	3°C/ Second Max.	3°C/ Second Max.
Liquidous temperature ( $T_L$ )	183°C	217°C
Time at liquidous ( $t_L$ )	60-150 Seconds	60-150 Seconds
Peak package body temperature ( $T_p$ )*	Table 1	Table 2
Time ( $t_p$ )** within 5 °C of the specified classification temperature ( $T_c$ )	20 Seconds**	30 Seconds**
Average ramp-down rate ( $T_p$ to $T_{smax}$ )	6°C/ Second Max.	6°C/ Second Max.
Time 25°C to Peak Temperature	6 Minutes Max.	8 Minutes Max.

\* Tolerance for peak profile temperature ( $T_p$ ) is defined as a supplier minimum and a user maximum.

\*\* Tolerance for time at peak profile temperature ( $t_p$ ) is defined as a supplier minimum and a user maximum.

Life Support Policy: Eaton does not authorize the use of any of its products for use in life support devices or systems without the express written approval of an officer of the Company. Life support systems are devices which support or sustain life, and whose failure to perform, when properly used in accordance with instructions for use provided in the labeling, can be reasonably expected to result in significant injury to the user.

Eaton reserves the right, without notice, to change design or construction of any products and to discontinue or limit distribution of any products. Eaton also reserves the right to change or update, without notice, any technical information contained in this bulletin.

**Eaton**  
Electronics Division  
1000 Eaton Boulevard  
Cleveland, OH 44122  
United States  
www.eaton.com/electronics

© 2017 Eaton  
All Rights Reserved  
Printed in USA  
Publication No. 4140 BU-SB111112  
August 2017