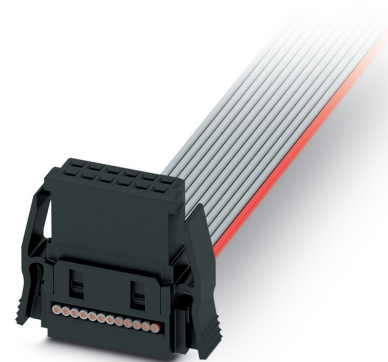


Order No.: 1010258

Type: FP 1,27/ 16-FWL-10/.../...

Assembled IDC female connector, Displacement connection



The figure shows a 12-pos. version with 12 contacts

1 Main features



- | | | | |
|---------------------|-------------------------|------------------------|----------|
| • No. of pos. | 16 | • Nominal current | 1.2 A |
| • Connection method | Displacement connection | • Test voltage | 500 V AC |
| • Color | black (9005) | • Connection direction | |
| • Pitch | 1.27 mm | • Type of packaging | |
| • Assembly | Assembly variant 10 | | |

2 Your advantages

- ✓ Gold-plated contacts ensure transfer quality remains stable over the long term
- ✓ Compact, high-position board-to-board or wire-to-board connectors for space-saving device designs
- ✓ Can be ordered pre-assembled: IDC female connectors with flat-ribbon cable enable immediate use in the device



Make sure you always use the latest documentation.
It can be downloaded at: phoenixcontact.net/product/1010258

3 Table of contents

1	Main features.....	1
2	Your advantages	1
3	Table of contents	2
4	General Technical Data	3
	4.1 item properties	3
	4.2 General information.....	3
5	Mechanical tests.....	4
	5.1 Insertion and withdrawal force per contact	4
	5.2 Service life	4
	5.3 Electrical data	4
6	Current carrying capacity/derating curves	5
	6.1 Insulation resistance	5
	6.2 forward resistance	5
7	Environmental and durability tests	6
	7.1 Vibration test	6
	7.2 Shock test.....	6
8	Cable, properties	7
9	Approvals / Certificates.....	8
10	Commercial Data.....	9
11	matching counterparts	9
12	Combination tests.....	10

1010258 FP 1,27/ 16-FWL-10/.../...**4 General Technical Data****4.1 item properties**

Order No.	1010258
Type	FP 1,27/ 16-FWL-10/.../...
Plug-in system	FINEPITCH 1,27 mm
Product type	Assembled IDC female connector
Type of contact	Female connector
Range of articles	FP 1,27/...-FWL
Pitch	1.27 mm
Range of positions	12...80
Number of positions	16
Number of levels	2
Connection method	Displacement connection
Type of locking	Snap-in locking Self-locking flange
Connection direction of the conductor to the PCB	90 °

4.2 General information

Note on application	Please observe the application note on self-assembly in the download area.
Note regarding documentation	Current documents such as 3D models, products family drawings, data sheets or packaging drawings are available in the Download Center.

5 Mechanical tests

5.1 Insertion and withdrawal force per contact

Insertion and withdrawal force per contact approx. 0.5 N

5.2 Service life

Service life 500 Insertion/withdrawal cycles, Performance level 1

5.3 Electrical data

Nominal current at 20 °C 1.2 A IEC 60512-5-2:2002-02 (50-pos.)

Test voltage 500 V AC IEC 60512-4-1:2003

1010258 FP 1,27/ 16-FWL-10/.../...

6 Current carrying capacity/derating curves

6.1 Insulation resistance

Insulation resistance $\geq 10 \text{ G}\Omega$, (IEC 60512-3-1:2002-02)

6.2 forward resistance

Contact resistance $\leq 10 \text{ m}\Omega$, (IEC 60512-2-1:2002-02)

7 Environmental and durability tests

7.1 Vibration test

Specification	IEC 60068-2-6:2007-12
Result	Test passed
Frequency	10 - 2000 - 10 Hz
Sweep speed	1 octave/min
Amplitude	1.5 mm (10 - 60.1 Hz)
Acceleration	20g (60.1 - 2000 Hz)
Test duration per axis	2.5 h
Test directions	X-, Y- and Z-axis
Note	

7.2 Shock test



Specification	IEC 60068-2-27:2008-02
Result	Test passed
Pulse shape	Semi-sinusoidal
Peak acceleration	50g
Shock duration	11 ms
Number of shocks per direction	3
Test directions	X-, Y- and Z-axis (pos. and neg.)

1010258 FP 1,27/ 16-FWL-10/.../...**8 Cable, properties**

Flat-ribbon conductor [PVC]	
Cable structure	16 x 7 x 0.102 mm
Variable cable length	Free input (0.05 ... 0.95 m)
Pitch	0.635 mm
Cable cross section	0.06 mm ²
Conductor cross section AWG	30
External sheath, color	gray
Conductor material	Tin-plated Cu litz wires
Note	Coded wire: red
Test voltage Core/Core	1500 V
Flame resistance	UL VW-1
UL AWM Style	2678

1010258 FP 1,27/ 16-FWL-10/.../...

9 Approvals / Certificates

cULus Recognized 	Voltage [V]	Current [A]	Cross section [AWG]	Cross section [mm ²]
-	-	-	-	-
EAC 				

1010258 FP 1,27/ 16-FWL-10/.../...

10 Commercial Data

Order No.	1010258
Type	FP 1,27/ 16-FWL-10/.../...
Pieces per package	100
Net weight	0 g
GTIN	
	Information that applies locally, see link on page 1
Country of origin	Information that applies locally, see link on page 1

11 matching counterparts

Order No.	Type
1714925	FP 1,27/ 16-MV 3,25
1714936	FP 1,27/ 16-MV 1,75
1714914	FP 1,27/ 16-MH

1010258 FP 1,27/ 16-FWL-10/.../...

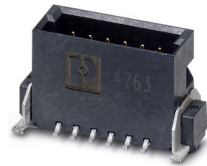
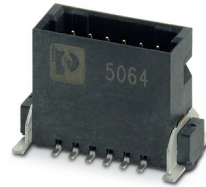
12 Combination tests



FP 1,27/...-FWL



FP 1,27/...-MH

FP 1,27/...-MV
1,75FP 1,27/...-MV
3,25

Mechanical tests				
Insertion/withdrawal force per position	approx. 0.5 N / 0.5 N	approx. 0.5 N / 0.5 N	approx. 0.5 N / 0.5 N	
Durability tests				
Contact resistance R ₁	10 mΩ	10 mΩ	10 mΩ	
Insertion/withdrawal cycles	500	500	500	
Contact resistance R ₂	10 mΩ	10 mΩ	10 mΩ	
Test voltage	500 V AC	500 V AC	500 V AC	
Thermal tests				
Tested number of positions	50	50	50	
Test current	1.4 A	1.4 A	1.4 A	