

DC Pass

# Matching Transformer

Z7550-BMBF+

50/75Ω

DC to 3000 MHz



Generic photo used for illustration purposes only

CASE STYLE: QP1876-1

## The Big Deal

- Low Insertion loss 0.6 dB typ.
- 2W Power Handling
- BNC-F (50Ω) to BNC-M (75Ω) Connectors

## Product Overview

Mini-Circuits' Z7550-BMBF+ is a coaxial 50/75Ω matching transformer covering the DC to 3000 MHz frequency range, supporting impedance matching in a wide range of systems including CATV, broadband networks, matching antenna systems and more. This model is ideal for 50/75Ω impedance matching in systems where minimizing overall signal loss is a priority. The transformer handles RF input power up to 2W and comes housed in a rugged, compact aluminum alloy case (1.25 x 1.25 x 0.94") with BNC-F (50Ω) to BNC-M (75Ω) connectors.

## Key Features

Feature	Advantages
Wideband, DC to 3000 MHz	Supports a wide variety of applications including CATV and DOCSIS® 3.1 systems and equipment.
Low insertion loss, 0.6 dB typ.	Enables excellent signal power transmission from input to output, minimizing overall system losses.
2W Power handling	Supports a range of system power requirements.
Compact size, 1.25 x 1.25 x 0.94"	Accommodates tight space requirements for crowded system layouts.
Connectorized package BNC-F (50Ω) to BNC-M (75Ω) connectors	Supports connections between components with different connector types.

### Notes

- A. Performance and quality attributes and conditions not expressly stated in this specification document are intended to be excluded and do not form a part of this specification document.  
B. Electrical specifications and performance data contained in this specification document are based on Mini-Circuit's applicable established test performance criteria and measurement instructions.  
C. The parts covered by this specification document are subject to Mini-Circuits standard limited warranty and terms and conditions (collectively, "Standard Terms"); Purchasers of this part are entitled to the rights and benefits contained therein. For a full statement of the Standard Terms and the exclusive rights and remedies thereunder, please visit Mini-Circuits' website at [www.minicircuits.com/MCLStore/terms.jsp](http://www.minicircuits.com/MCLStore/terms.jsp)



# DC Pass Matching Transformer

50/75Ω

DC to 3000 MHz

## Z7550-BMBF+



Generic photo used for illustration purposes only

CASE STYLE: QP1876-1

Connectors Model  
75Ω BNC-M Z7550-BMBF+  
50Ω BNC-F

**+RoHS Compliant**

The +Suffix identifies RoHS Compliance. See our web site for RoHS Compliance methodologies and qualifications

### Maximum Ratings

Operating Temperature	-40°C to 85°C
Storage Temperature	-55°C to 100°C
DC Current	5A max.
DC Resistance	0.2Ω max.

Permanent damage may occur if any of these limits are exceeded.

### Features

- Low loss (0.6 dB typ.) matching device
- Wide band coverage, DC-3000 MHz
- Connectorized package

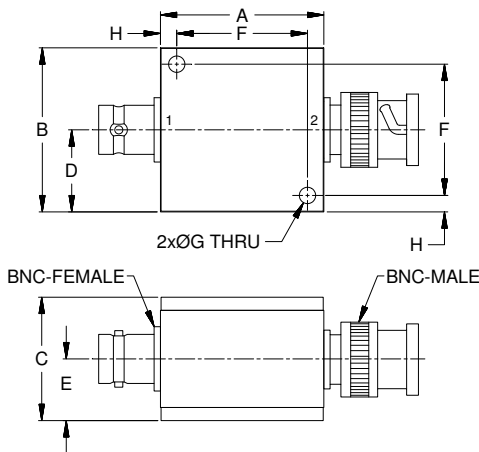
### Applications

- Impedance matching
- CATV
- Matching antenna systems

### Coaxial Connections

PORT - 1	BNC-Male(75Ω)
PORT - 2	BNC-Female(50Ω)

### Outline Drawing

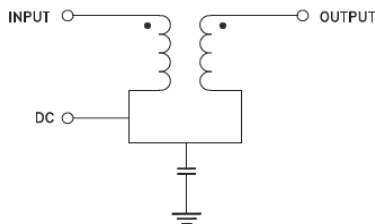


### Outline Dimensions (inch mm)

A	B	C	D	E	F	G	H	Wt.
1.25	1.25	.94	.63	.47	1.00	.13	.13	grams
31.75	31.75	23.88	16.00	11.94	25.40	3.30	3.30	51

Note: Please refer to case style drawing for details

### Functional Schematic



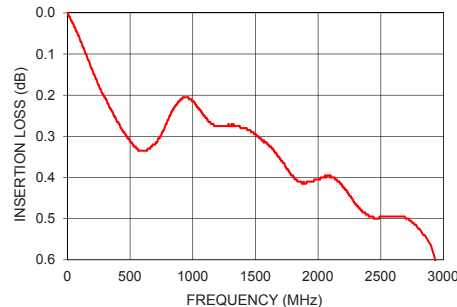
### Electrical Specifications at 25°C

Parameter	Frequency (MHz)	Min.	Typ.	Max.	Unit
Frequency Range	-	DC	-	3000	MHz
Insertion Loss	10	-	-	0.5	dB
	950 - 2500	-	0.5	1.0	
VSWR	10	-	-	1.8	:1
	950 - 2500	-	-	1.6	
Power	2500 - 3000	-	1.6	-	W
	DC - 3000	-	-	2	

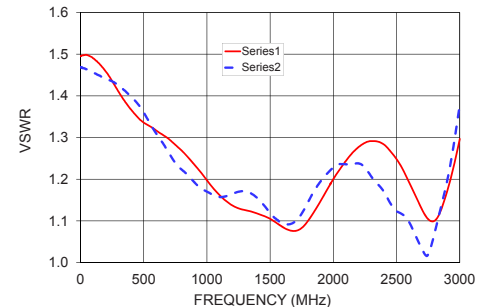
### Typical Performance Data

Frequency (MHz)	Insertion Loss (dB)	VSWR	
		50 Ω	75 Ω
10	0.01	1.50	1.47
100	0.07	1.49	1.46
250	0.18	1.44	1.44
500	0.31	1.34	1.36
950	0.21	1.22	1.18
1500	0.30	1.10	1.12
1750	0.38	1.08	1.12
2300	0.47	1.29	1.21
2500	0.50	1.25	1.12
3000	0.71	1.30	1.38

Z7550-BMBF+  
INSERTION LOSS



Z7550-BMBF+  
VSWR



### Notes

- Performance and quality attributes and conditions not expressly stated in this specification document are intended to be excluded and do not form a part of this specification document.
- Electrical specifications and performance data contained in this specification document are based on Mini-Circuit's applicable established test performance criteria and measurement instructions.
- The parts covered by this specification document are subject to Mini-Circuits standard limited warranty and terms and conditions (collectively, "Standard Terms"); Purchasers of this part are entitled to the rights and benefits contained therein. For a full statement of the Standard Terms and the exclusive rights and remedies thereunder, please visit Mini-Circuits' website at [www.minicircuits.com/VOLStore/terms.jsp](http://www.minicircuits.com/VOLStore/terms.jsp)

