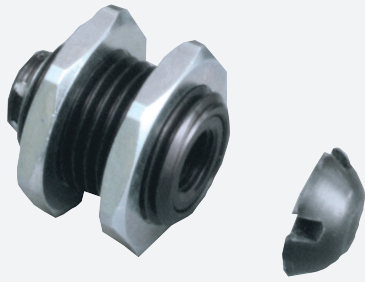


Mounting aid

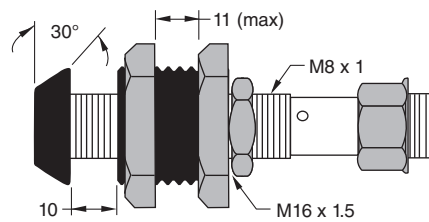
CM-08



- Cushioned Mounting Bracket
- For 8 mm diameter sensors
- Maximum overtravel 8.89 mm

Mounting aid

Dimensions



Technical Data

General specifications

Inside diameter 8 mm

Mechanical specifications

Material
Sleeves: anodized aluminum
Jam nuts: nickel-plated metal
End cap: fiberglass reinforced nylon

Release date: 2020-06-29 Date of issue: 2020-06-29 Filename: 091457_eng.pdf

Refer to "General Notes Relating to Pepperl+Fuchs Product Information".

Pepperl+Fuchs Group
www.pepperl-fuchs.com

USA: +1 330 486 0001
fa-info@us.pepperl-fuchs.com

Germany: +49 621 776 1111
fa-info@de.pepperl-fuchs.com

Singapore: +65 6779 9091
fa-info@sg.pepperl-fuchs.com

PF PEPPERL+FUCHS

Function

The cushioned mounting bracket provides protection against accidental target contact for embeddable standard inductive sensors.