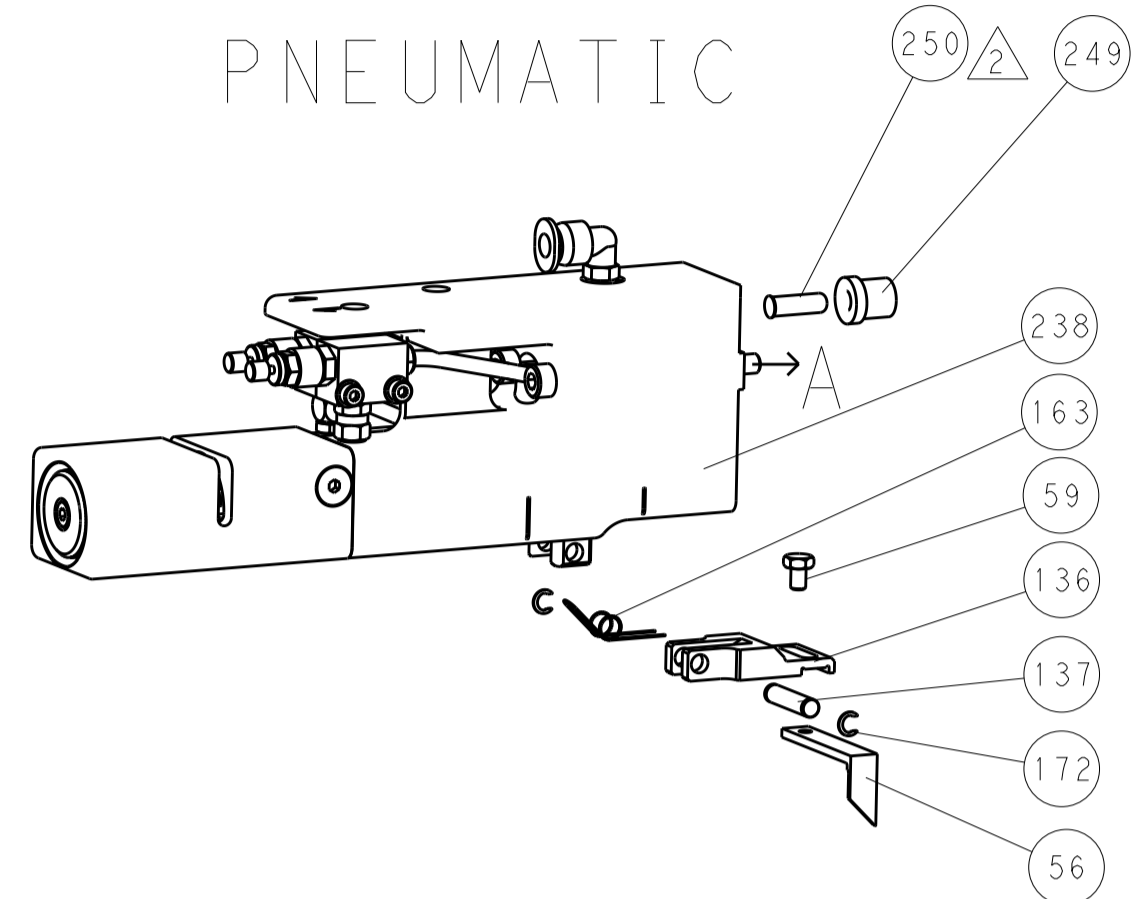
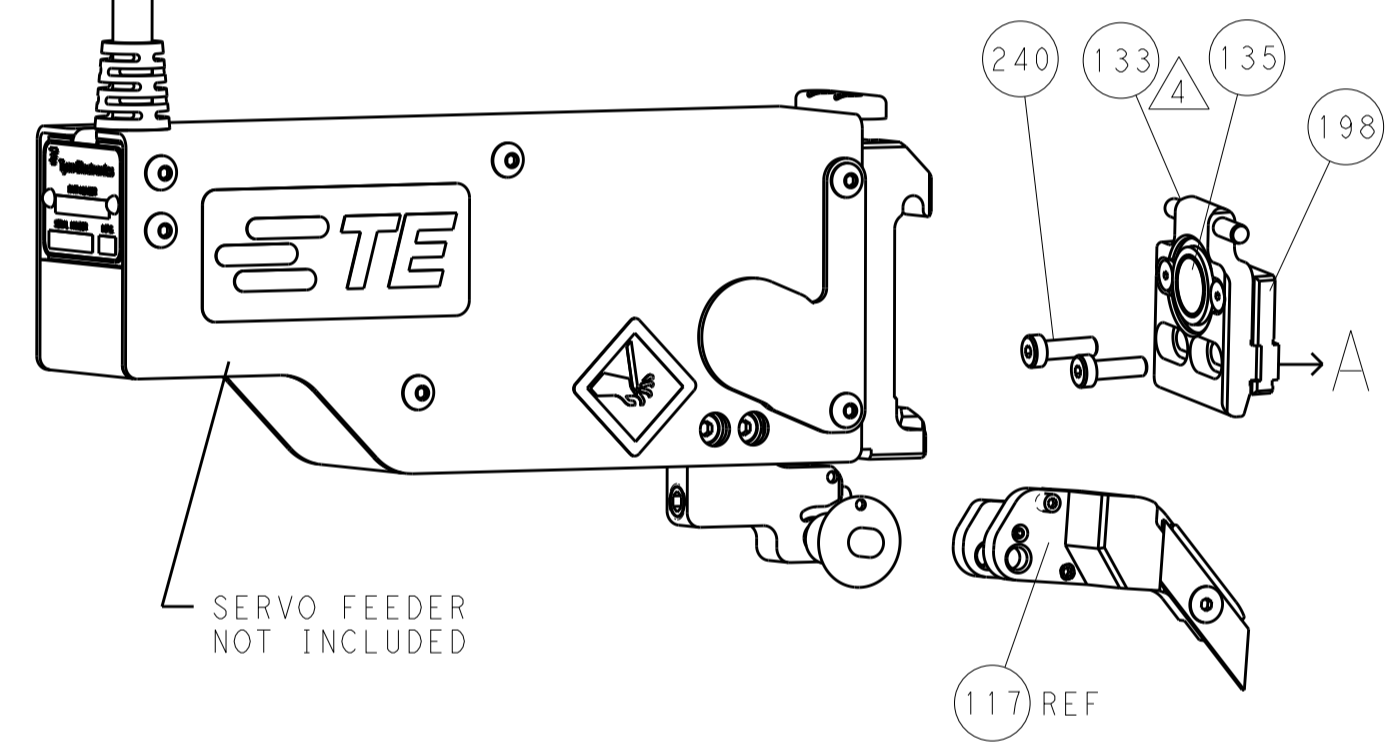


FEED TYPE

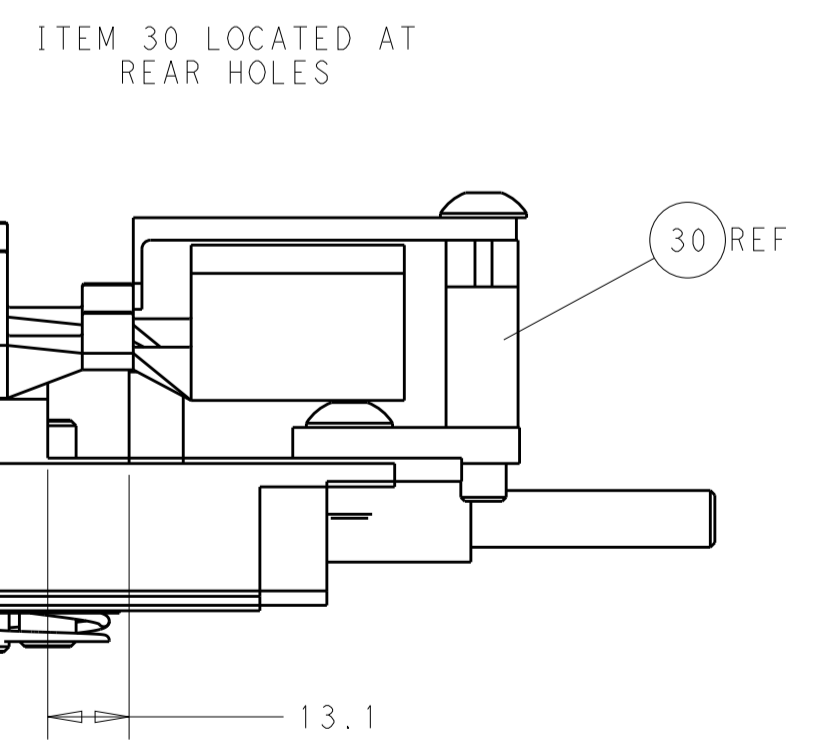
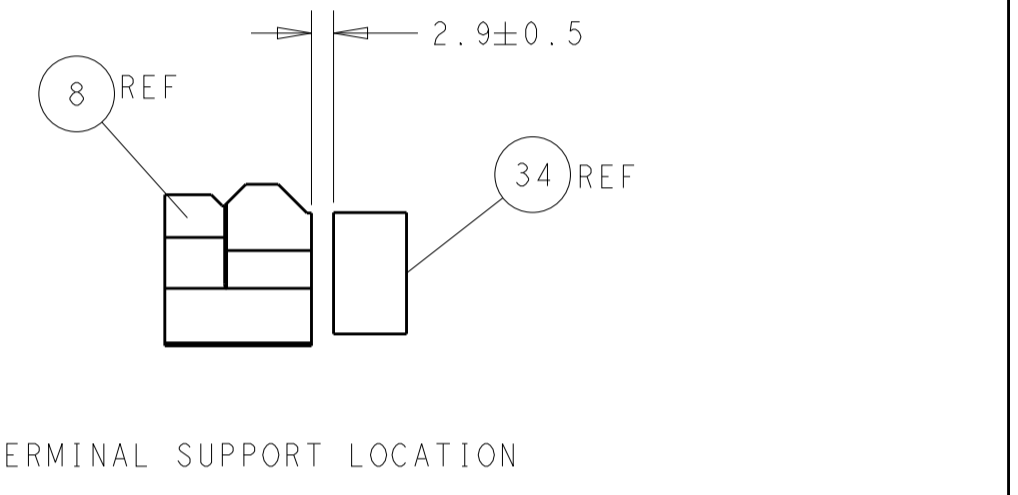
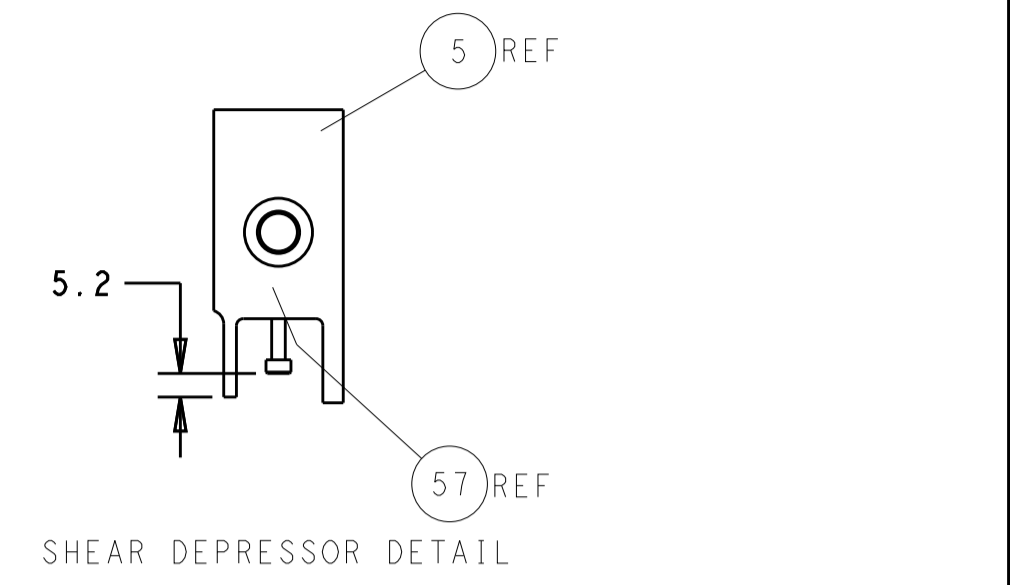
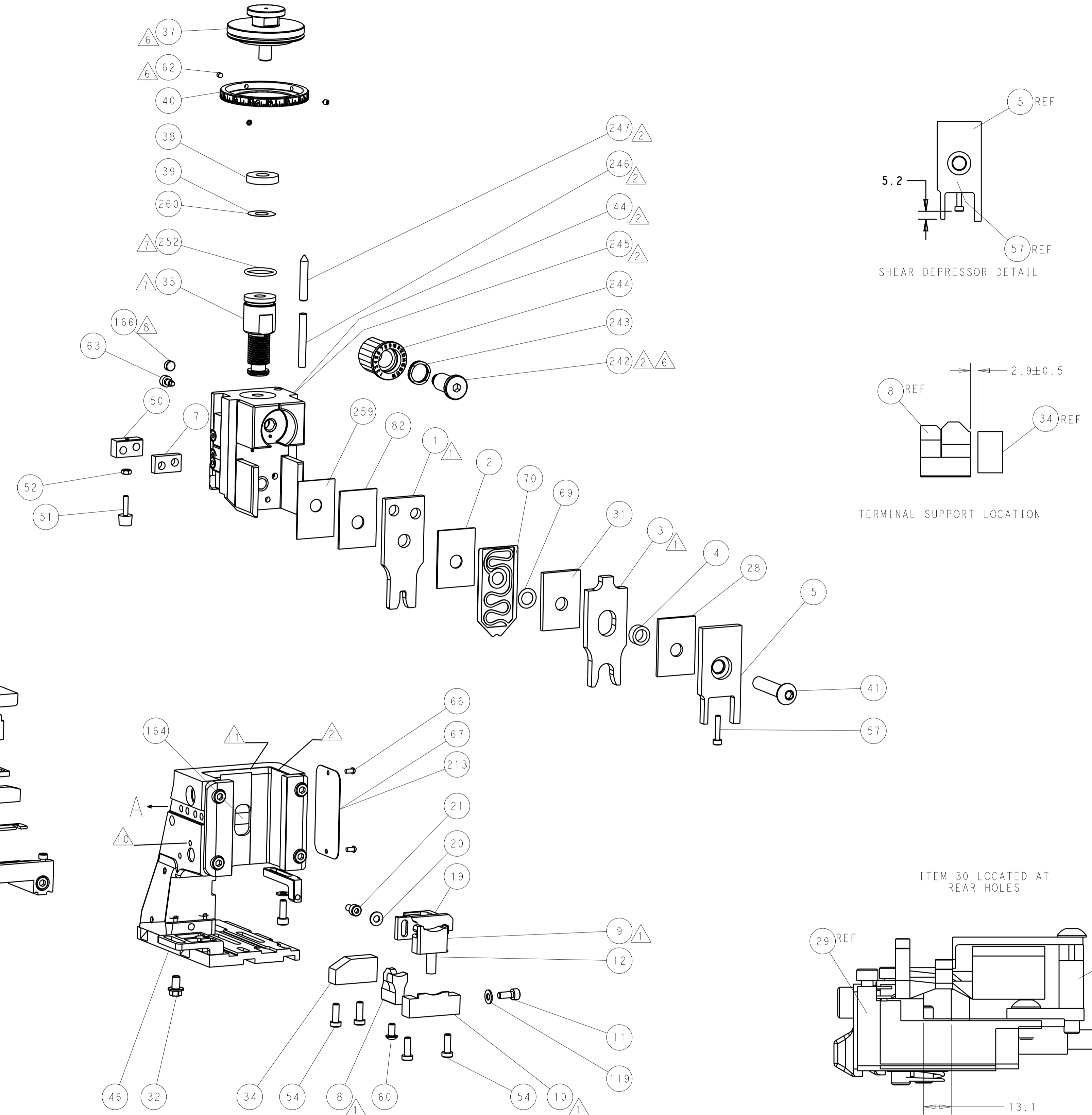
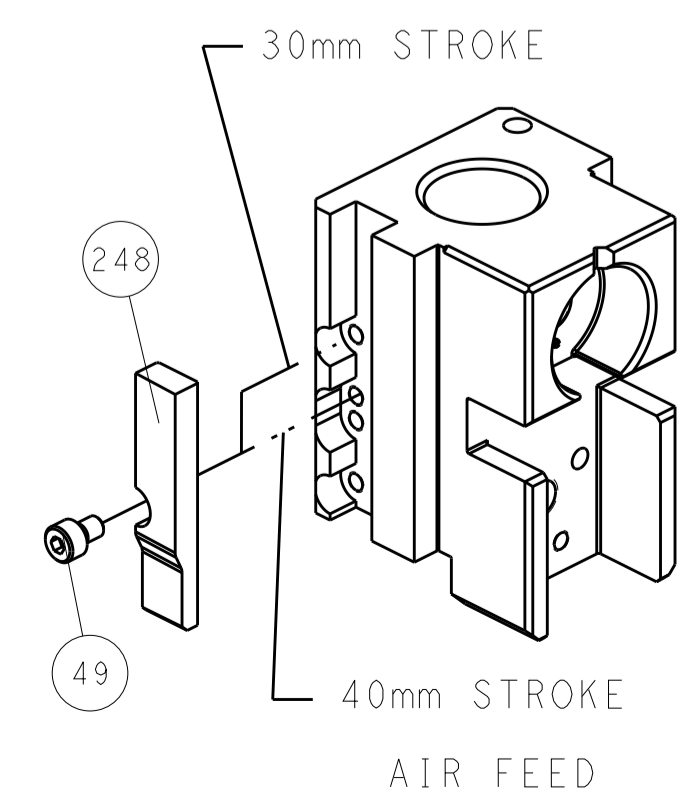
PNEUMATIC



SERVO LATCH PLATE



CAM POSITION



FEED TRACK POSITION GUIDE BY WIRE BARREL

ATLANTIC VERSION
 Shown on sheets 1 of 4 & 2 of 4
 (Pacific version shown on sheets 3 of 4 & 4 of 4)

DIMENSIONS: mm		TOLERANCES UNLESS OTHERWISE SPECIFIED: 0 PLC ±0.5 1 PLC ±0.5 2 PLC ±0.13 3 PLC ±0.013 4 PLC ±0.0001 ANGLES ±0.0001		FINISH		DWG: BOB HIGMAN 11DEC2012 CHK: G. BAILEY 11DEC2012 APVD: M. CUFFORD 11DEC2012 NAME: Ocean Side Feed Applicator SIZE: A1 CAGE CODE: 00779 DRAWING NO: 2151781 SCALE: 1:2 SHEET: 2 of 4 REV: C1		REVISIONS P. LTH. DESCRIPTION DATE DWN. APVD. - SEE SHEET 1 - - -	
MATERIAL:		WEIGHT:		PRODUCT SPEC:		APPLICATION SPEC:		RESTRICTED TO:	

APPLICATOR STYLE CONVERSION CHART. Table with columns: CONVERT TO, PART NUMBERS REQUIRED. Includes rows for SERVO LATCH PLATE, SMART APPLICATOR, PNEUMATIC FEED, etc.

APPLICATOR DATA. Table with columns: CRIMP SIZE TYPE, WIRE SIZE, INSUL. Includes APPLICATOR INSTRUCTIONS 408-10389.

TERMINAL DATA: TE TERMINAL TE CRIMP SPECIFICATION. Includes WIRE STRIP LENGTH, INSULATION DIAMETER RANGE, TERMINAL APPLICATION SPECIFICATION, and TERMINALS APPLIED table.

WIRE SIZE CRIMP HEIGHT mm [INCH] CRIMP HEIGHT REFERENCE SETTING. Table with rows for 4.00mm2 and 2.50mm2.



- RECOMMENDED SPARE PARTS
GREASE BEARING SURFACES LIGHTLY
LUBRICATE DAILY PER THE APPLICATOR INSTRUCTION SHEET SUPPLIED WITH THE APPLICATOR.
APPLICATOR SPECIFIC DATA TO BE ENTERED INTO BLANK MEMORY CHIP AT ASSEMBLY. SEE BELOW FOR PART NUMBER: PNEUMATIC FEED WITH "SMART APPLICATOR" CONVERSION: 8-2151781-4 SERVO FEED WITH "FINE CRIMP HEIGHT ADJUST": 8-2151781-5
ADJUSTMENT OF THE STRIPPER MAY BE REQUIRED WHEN MOVING THE APPLICATOR BETWEEN BENCH AND LEADMAKER APPLICATIONS.
APPLY PART NUMBER 1-23419-5 LOCTITE TO THREADS OF ITEMS 62 & 242.
GREASE THREADS, GROOVE AND O-RING ON ITEMS 139 & 152.
MAGNET MUST BE ORIENTED CORRECTLY IN ORDER TO PROPERLY ACTUATE THE COUNTER.
CRIMP HEIGHT REFERENCE SETTING WAS THE SETTING USED WHEN THE APPLICATOR WAS QUALIFIED AT THE FACTORY. ADJUSTMENT MAY BE NECESSARY WHEN RUNNING APPLICATOR IN THE FIELD.
TERMINAL PITCH NOT COMPATIBLE WITH MECHANICAL FEED
THE APPLICATOR IS A NON-CARRIER CUTTING STYLE ONLY.
THIS APPLICATOR APPLIES TERMINAL WITH A SEAL. INSULATION RANGLE QUOTED IS THAT OF THE TERMINAL. THE SEAL INSULATION RANGE IS 4.0-4.5mm [.157-.177 IN.]
APPLY TORO-SEAL IN ALLEN SOCKET TO FILL HOLE AFTER FLAT HD HAS BEEN ADJUSTED TO CORRECT HEIGHT AT QUALIFICATION. APPLY #1-23419-5 LOC-TITE TO THREADS.
CUT TO LENGTH AT ASSEMBLY.
RELOCATE ITEM 19 TO BACK OF APPLICATOR AFTER TURNING STRIPPER MOUNT 180 DEGREES.

*WARNING
ON INSTALLATION, SET WIRE DISC, ITEM 40 TO LARGEST WIRE SIZE SETTING. USE OF SETTINGS BELOW MINIMUM REQUIRED CRIMP HEIGHT SETTING WILL CAUSE DAMAGE TO CRIMP TOOLING.

Table with columns: ITEM NO, PART NO, DESCRIPTION. Lists various parts like SPACER, PRECISION, FINE ADJUST HEAD ASM, etc.

PACIFIC VERSION
Shown on sheets 3 of 4 & 4 of 4
(Atlantic version shown on sheets 1 of 4 & 2 of 4)

REVISIONS table with columns: P, LTR, DESCRIPTION, DATE, DWN, APVD. Includes revision 1: SEE SHEET 1.

Main parts list table with columns: P, LTR, DESCRIPTION, DATE, DWN, APVD. Lists numerous components like MECHANICAL FEED ASSEMBLY, AIR FEED MODULE, FENCE, TAG IDENTIFICATION, etc.

Customer information and drawing details form. Includes fields for DIMENSIONS, TOLERANCES, MATERIAL, FINISH, WEIGHT, SCALE, SHEET 3 OF 4, REV C1.

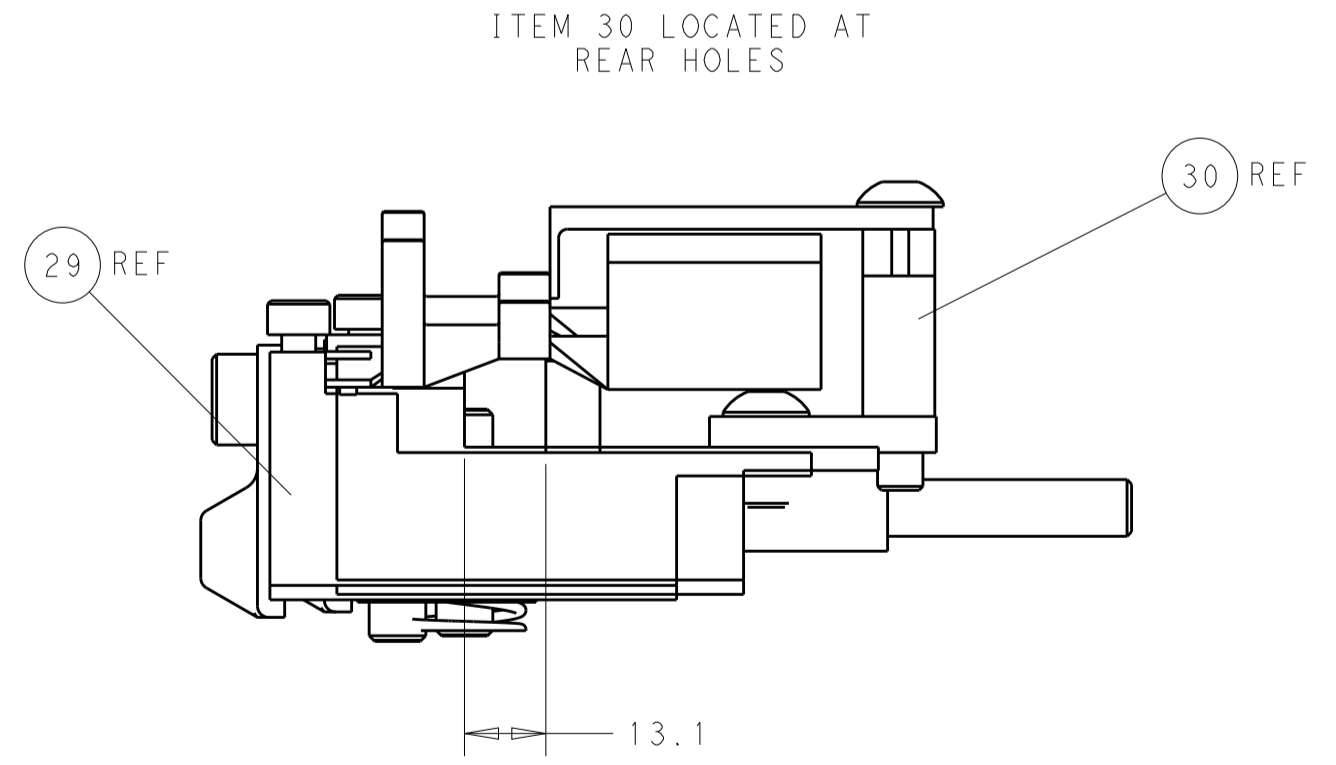
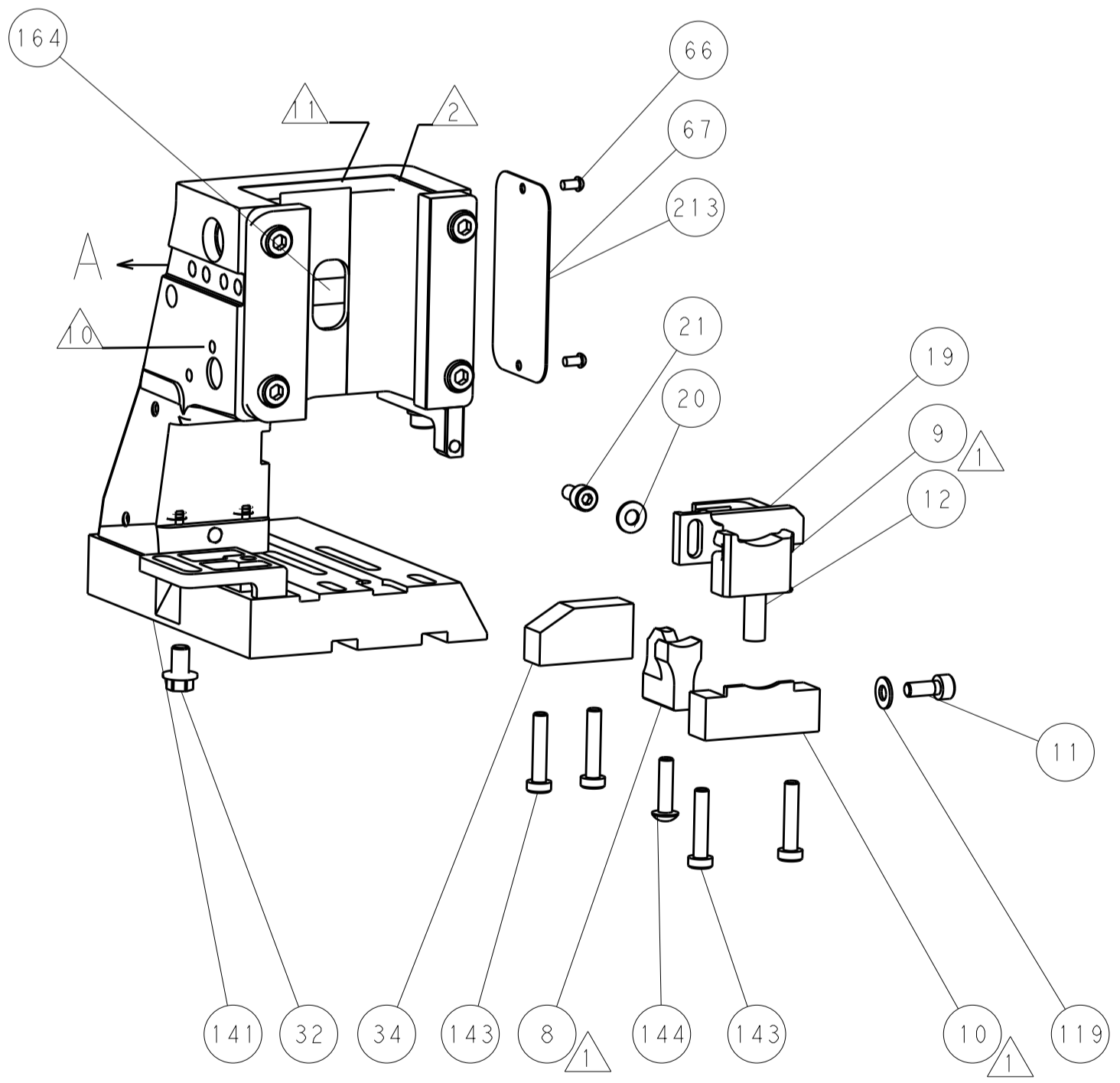
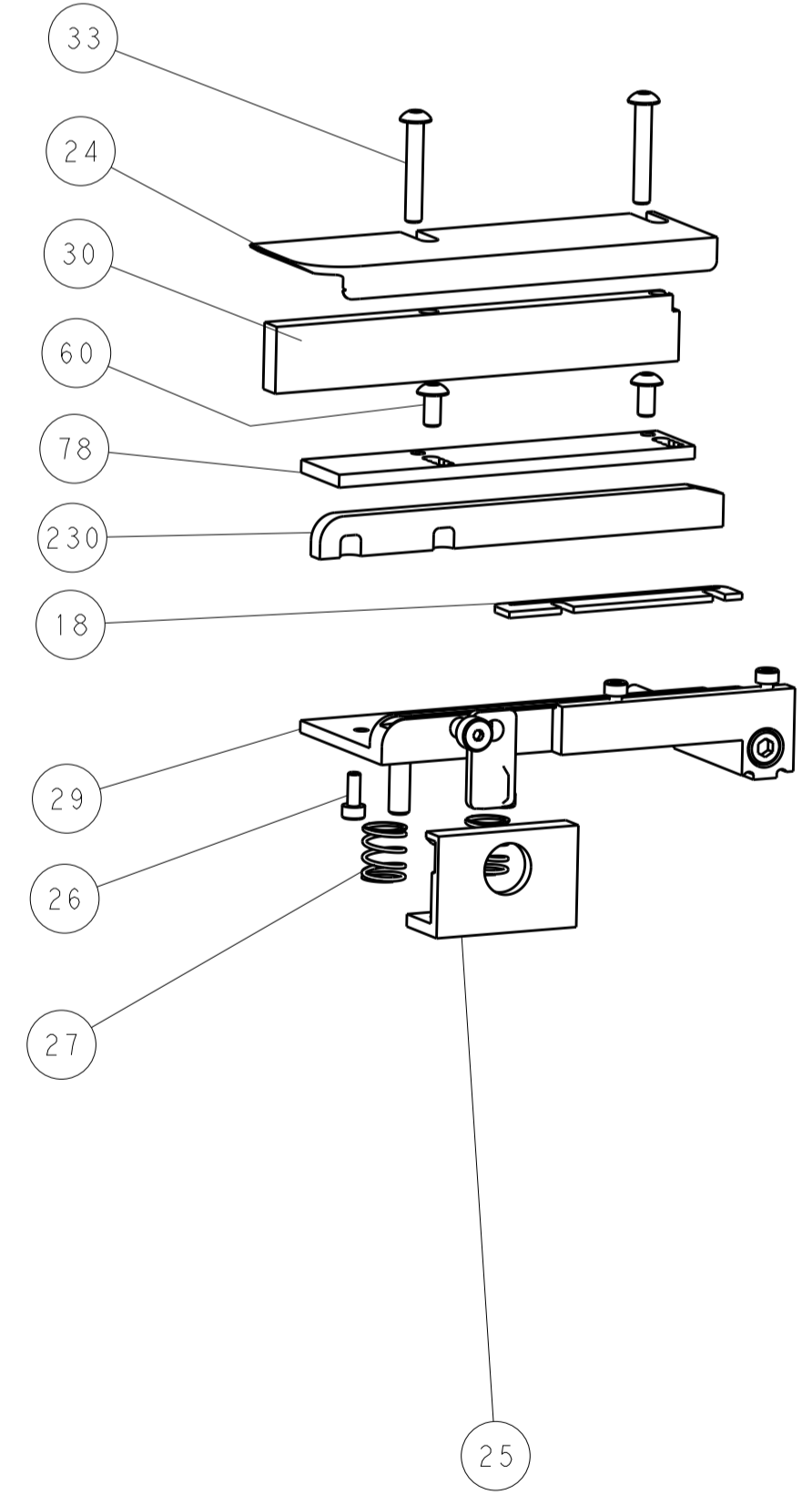
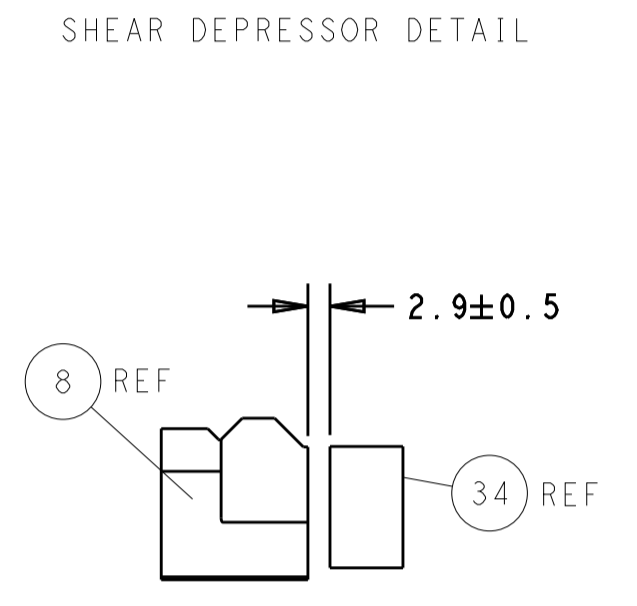
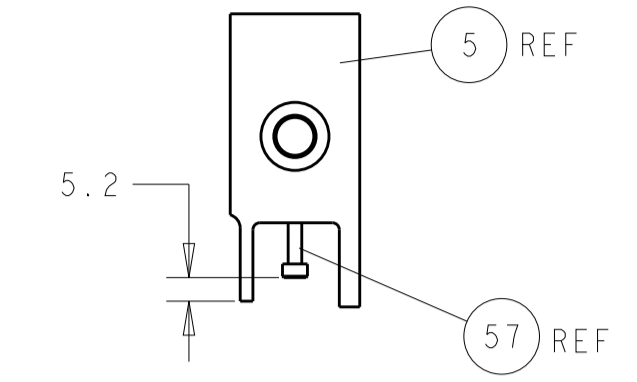
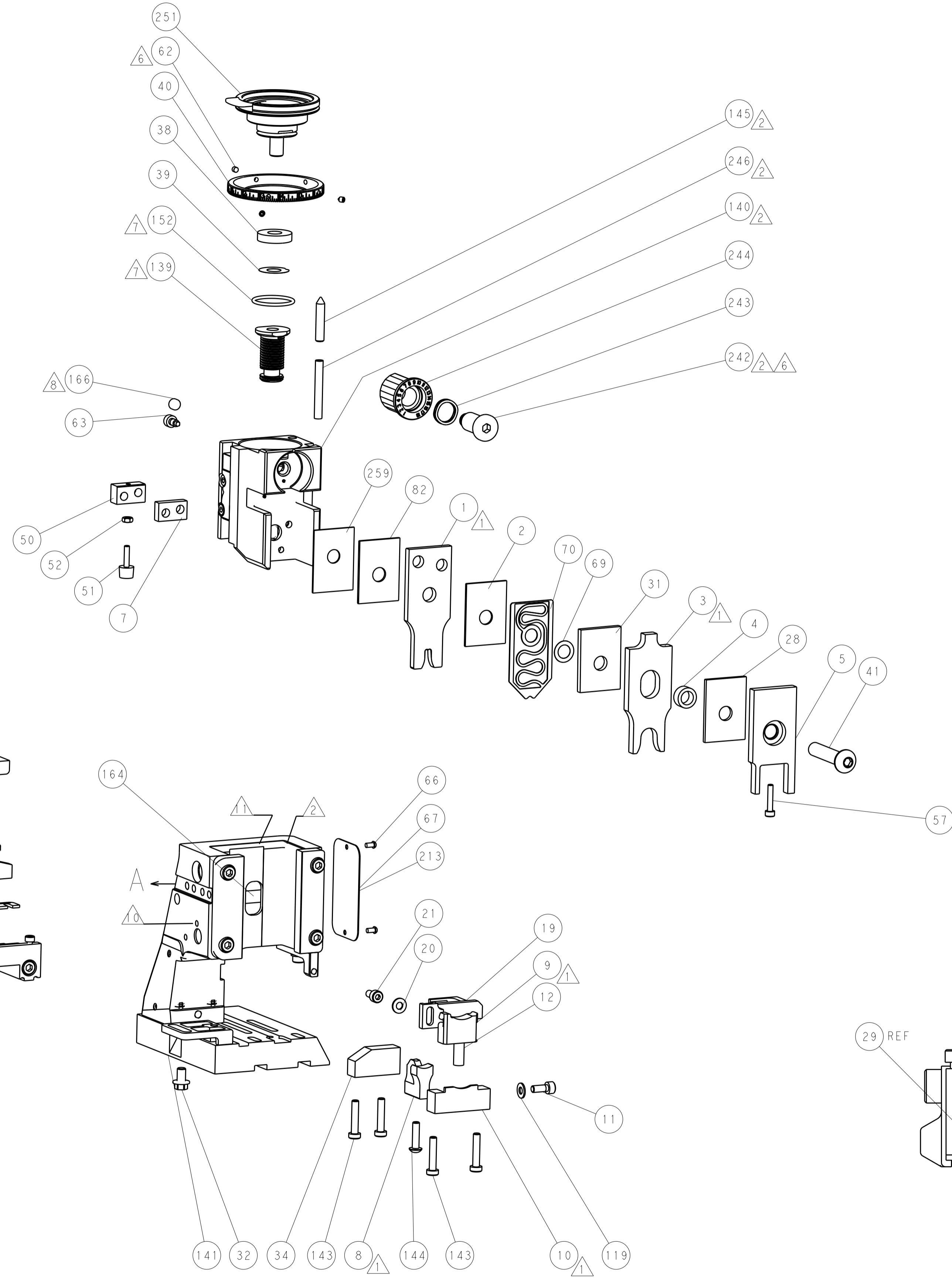
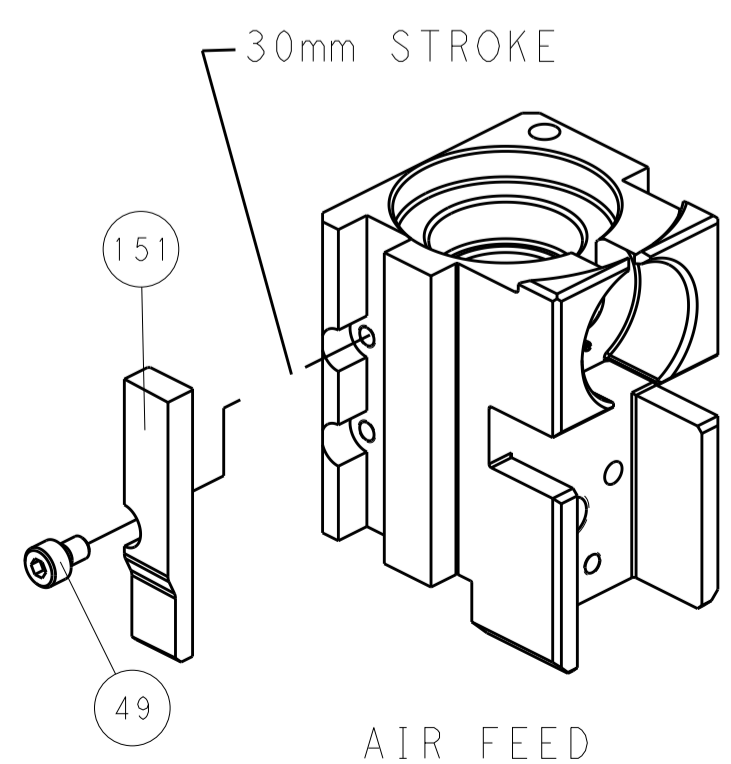
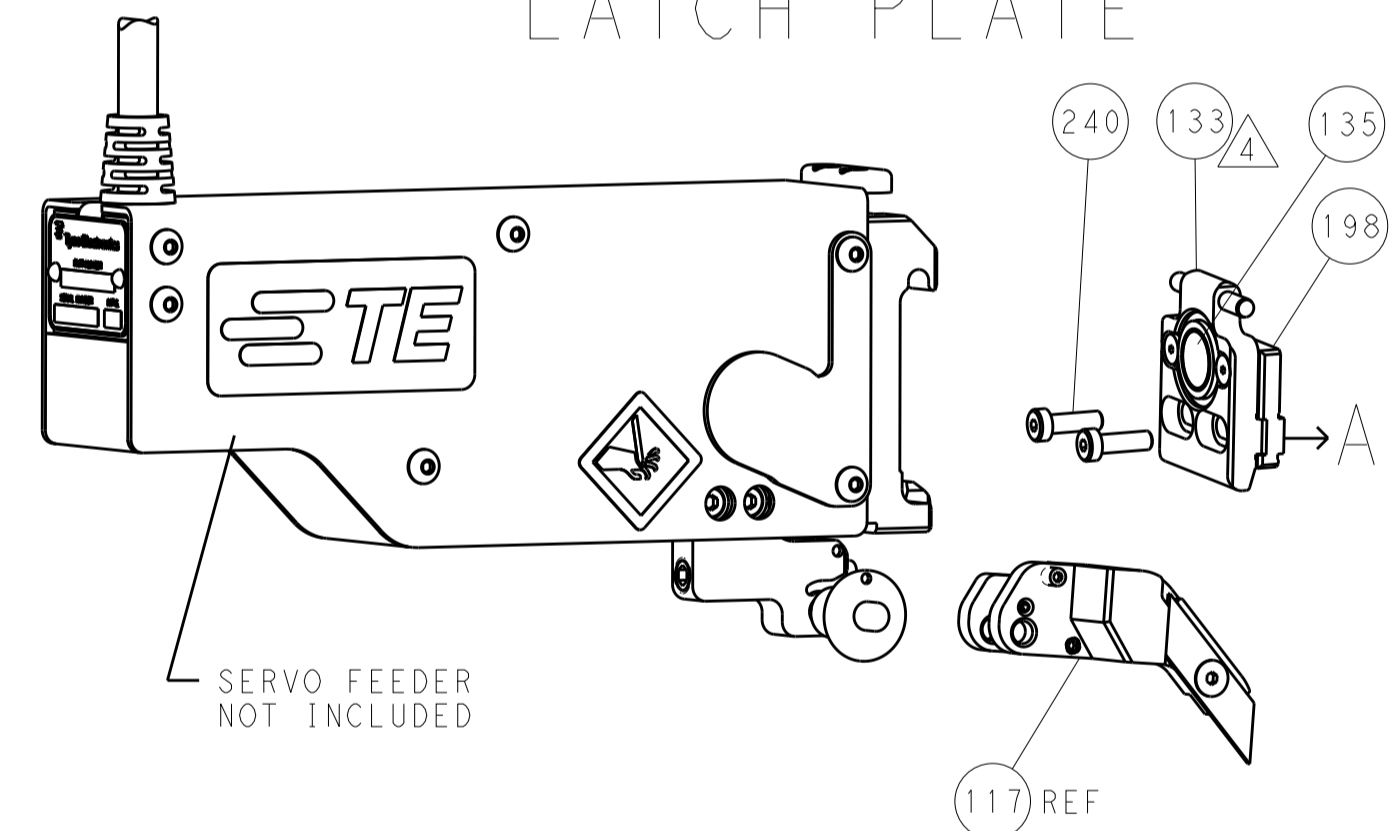
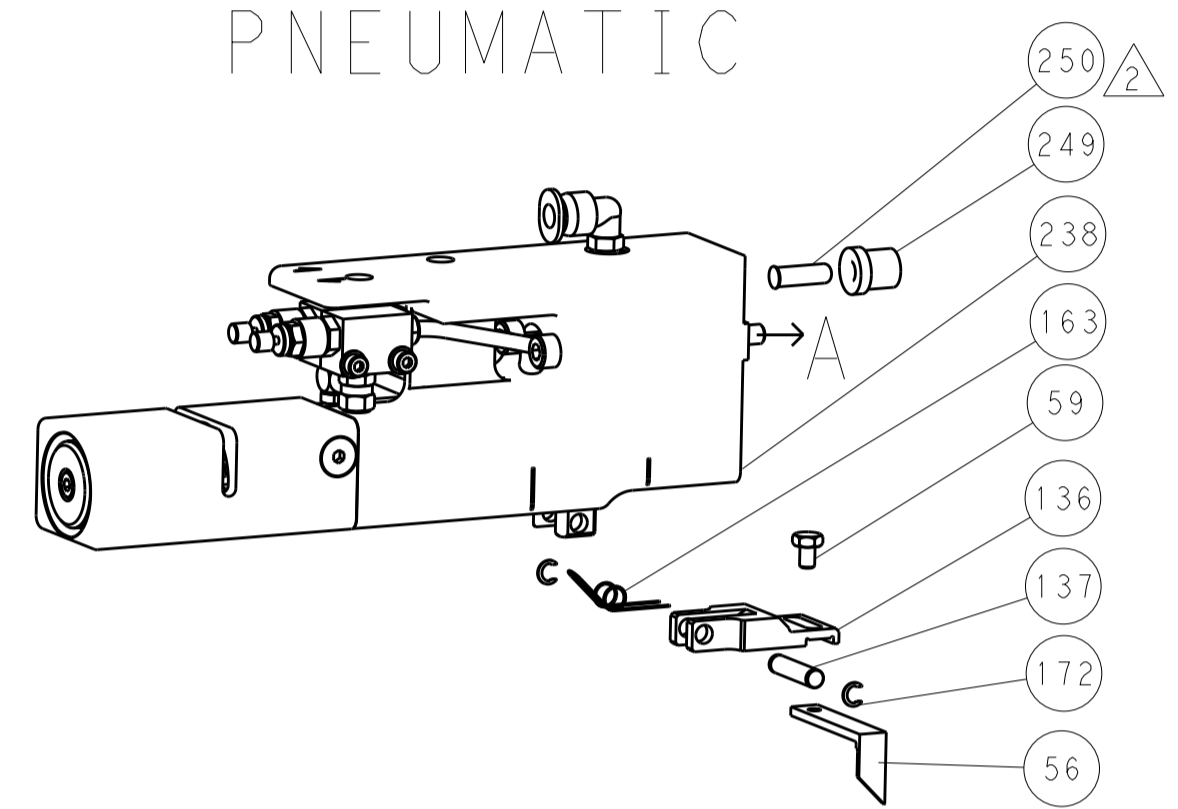
LOC	DIST	REV	DATE	BY	APPV
A	66				

FEED TYPE

PNEUMATIC

SERVO LATCH PLATE

CAM POSITION



PACIFIC VERSION
 Shown on sheets 3 of 4 & 4 of 4
 (Atlantic version shown on sheets 1 of 4 & 2 of 4)

DIMENSIONS: mm 		TOLERANCES UNLESS OTHERWISE SPECIFIED: 0 PLC ±0.5 1 PLC ±0.13 2 PLC ±0.13 3 PLC ±0.013 4 PLC ±0.001 ANGLES ±0.001		DWN BOB HIGMAN 11DEC2012 CHK G. BAILEY 11DEC2012 APVD M. CLIFFORD 11DEC2012 NAME Ocean Side Feed Applicator SIZE CAGE CODE DRAWING NO. RESTRICTED TO A1 00779 C=2151781 Customer Accessible Production Drawing SCALE 1:2 SHEET 4 OF 4 REV C1	
--------------------	--	---	--	--	--