



PRODUCT SPECIFICATION

REV A January 2011

Oscilent Controlled Document

Ordering Code / Part Number	Product Description
813-SL38.0M-03A	38.0 MHz IF SAW Filter 2.7 MHz Bandwidth

Specification Contents

- o Mechanical Dimensions
- o Test Circuit
- o Maximum Ratings
- o Electrical Specification
- o Frequency Response

Notes

- o Electrostatic Sensitive Device (ESD) 
- o Avoid excessive ultrasonic exposure
- o Solderability compatible with JEDEC J-STD-020C Pb-free process, 260°C peak reflow temperature
- o This product complies with EU directive 2002/95/EC (RoHS compliance)



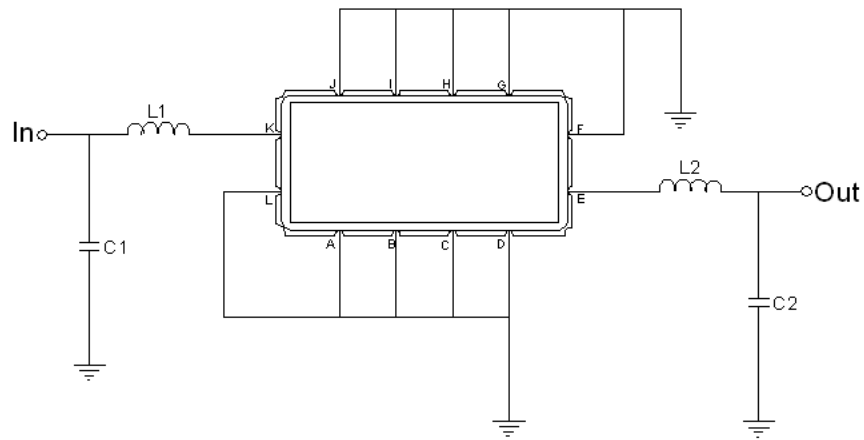


Mechanical Dimensions (mm)



Pin Description	
A, B, C, D, F, G, H, I, J, L	Ground
K	Input
E	Output

Test Circuit



Test Fixture & Values	
Input	L1=56 nH , C1=0 pF
Output	L2=56 nH , C2=0 pF
Source/Load Impedance	50 Ω

**Maximum Ratings**

Parameters Description	Unit	Minimum	Typical	Maximum
Operating Temperature Range	°C	-40	-	80
Storage Temperature Range	°C	-45	-	85
Maximum DC Voltage	V	-	-	10
Maximum Input Power	dBm	-	-	10
Source Impedance (single ended) ⁽¹⁾	Ω	-	50	-
Load Impedance (single ended) ⁽¹⁾	Ω	-	50	-

Notes: With Matching Network (Ref. Testing Environment Circuit as shown above).

Those impedances could be modified with different impedance values and/or structures, if necessary.

Electrical Specification

Parameters Description	Unit	Minimum	Typical	Maximum
Center Frequency (Fo)	MHz	-	38.0	-
Insertion Loss at Fo	dB	-	11.5	15.0
Amplitude Ripple Variation	dB _{p-p}	-	0.5	1.0
Group Delay Variation	nsec	-	75	150
Absolute Delay at Fo	μsec	-	1.16	-
Temperature Coefficient	ppm/°C	-	-86	-
Bandwidth at -1.0 dB	MHz	-	2.7	-
Bandwidth at -3.0 dB	MHz	3.0	3.4	-
Bandwidth at -30.0 dB	MHz	-	5.6	5.9
Relative Attenuation				
Lower Sidelobe	dB	-	43	-
Upper Sidelobe	dB	-	43	-



Frequency Response

