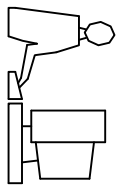
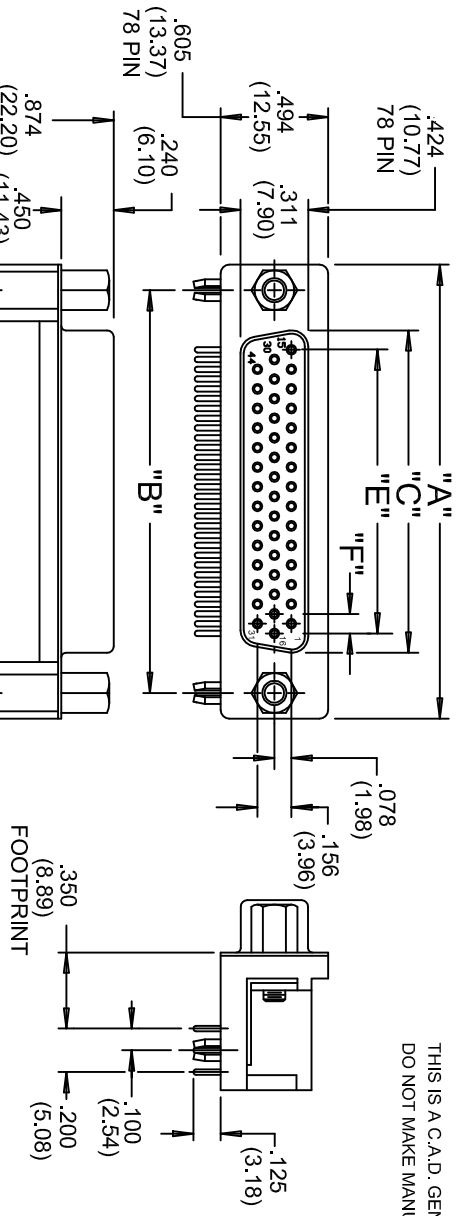


THIS IS A C.A.D. GENERATED DRAWING  
DO NOT MAKE MANUAL REVISIONS TO MASTER.

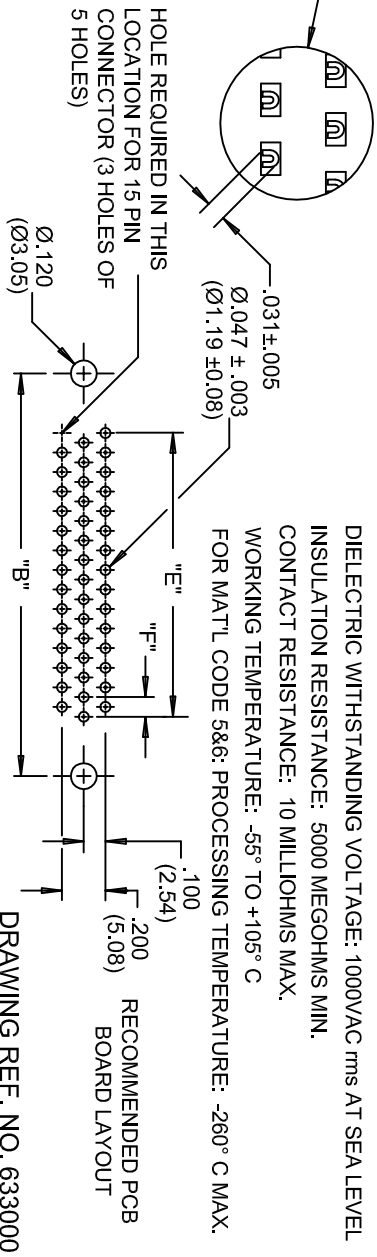


ISSUE NUMBER  
ADD PCB LAYOUT  
R.STAMONICA MAY 24/2011  
**(12)**



**MATERIALS:**  
 INSULATOR: THERMOPLASTIC POLYESTER, UL94V-0  
 CHEMICAL RESISTANCE, COLOR BLACK  
 SHELL: STEEL, NICKEL PLATED  
 CONTACT: SEE ORDERING CODE  
 GOLD FLASH (CONTACT CODE 263)  
 10 MICRONS GOLD (CONTACT CODE 563)  
 30 MICRONS GOLD (CONTACT CODE 663)  
 TIN PLATING ON TAIL ENDS

**ELECTRICAL:**  
 CURRENT RATING: 3 AMPERES  
 DIELECTRIC WITHSTANDING VOLTAGE: 1000VAC rms AT SEA LEVEL  
 INSULATION RESISTANCE: 5000 MEGOHMS MIN.  
 CONTACT RESISTANCE: 10 MILLIOHMS MAX.  
 WORKING TEMPERATURE: -55° TO +105° C  
 FOR MATL CODE 5&6: PROCESSING TEMPERATURE: -260° C MAX.



DRAWING REF. NO. 633000

# ORDERING CODE

- SERIES **634-015-563-042**
- NUMBER OF CONTACTS \_\_\_\_\_
- CONTACT FINISH CODE \_\_\_\_\_
- CONNECTOR CODE \_\_\_\_\_
- 63- STANDARD CONTACTS, BLACK INSULATOR  
 73- 9TH PIN RECESSED .050(3.05) BLACK INSULATOR  
 74- 9TH PIN RECESSED .050(3.05) BLUE INSULATOR
- CONNECTOR MATERIAL CODE: \_\_\_\_\_
- 0- PHOSPHOR BRONZE  
 1- BRASS  
 5- PHOSPHOR BRONZE, HIGH TEMP INSULATOR  
 6- BRASS, HIGH TEMP INSULATOR
- GROUNDING FEATURE \_\_\_\_\_
- 1- 120(3.05) DIA. THROUGH HOLE TOP GROUND  
 2- 120(3.05) DIA. THROUGH HOLE BOTTOM GROUND  
 3- TWO PRONG BOARDLOCKS FOR .120(3.05)DIA.HOLE  
 4- FOUR PRONG BOARDLOCKS FOR .120(3.05)DIA.HOLE
- MOUNTING OPTIONAL \_\_\_\_\_
- 0- FIXED ROUND STANDOFF WITH THREADED INSERT  
 1- .125" DIA. THROUGH HOLE  
 2- 4-40 UNC THREADED INSERT  
 3- 4-40 UNC THREADED HEX STANDOFF

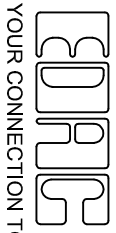
NUMBER OF CONTACTS	"A" Inch (mm)	"B" Inch (mm)	"C" Inch (mm)	"E" Inch (mm)	"F" Inch (mm)
15	1.214 (30.84)	.984 (24.99)	.642 (16.30)	.405 (10.29)	.090 (2.29)
26	1.545 (39.24)	1.312 (33.32)	.971 (24.66)	.765 (19.43)	.090 (2.29)
44	2.088 (53.04)	1.852 (47.04)	1.511 (38.38)	1.305 (33.15)	.090 (2.29)
62	2.730 (69.34)	2.500 (63.50)	2.159 (54.84)	1.948 (49.47)	.095 (2.41)
78	2.635 (66.93)	2.406 (61.11)	2.064 (52.42)	1.805 (45.85)	.095 (2.41)

## 634 SERIES HIGH DENSITY SUBMINIATURE D CONNECTOR RECEPTACLE(SOCKET) RIGHT ANGLE .350(8.89) FOOTPRINT

DRAWN: F.BRIONES DATE: NOV. 26/97  
 CHECKED: DATE:



THIS SERIES FULLY CONFORMS TO THE EUROPEAN UNION DIRECTIVES 2002/95/EC AND 2002/96/EC FOR ROHS COMPLIANCY.



EDAC INC  
 TORONTO, ONTARIO  
 CANADA

THESE DRAWINGS AND SPECIFICATIONS ARE THE PROPERTY OF EDAC INC. AND SHALL NOT BE REPRODUCED OR COPIED OR USED AS THE BASIS FOR THE MANUFACTURE OR SALE OF APPARATUS WITHOUT WRITTEN PERMISSION.

SEE ORDERING CODE  
 DRAWING NUMBER **634-000-001**  
 ISSUE 12

# Mouser Electronics

Authorized Distributor

Click to View Pricing, Inventory, Delivery & Lifecycle Information:

[EDAC:](#)

[634-015-263-032](#)