

RL-7505

SHIELDED SMD POWER INDUCTORS

DESCRIPTION

- Compact Shielded SMD Power Inductors

ENVIRONMENTAL DATA

- Storage temperature range: -55°C to +130°C
- Operating temperature range: -40°C to +130°C

PACKAGING INFORMATION

- Packaging information: pg. 505

FEATURES & APPLICATIONS

- Magnetic shielded surface mount inductor with high current rating
- Low resistance to keep power loss at a minimum
- Excellent for power line DC-DC conversion applications used in notebook computers and other electronic equipment

Verify operation with sample in actual circuit. Order samples at www.rencousa.com.

MECHANICAL DIMENSIONS

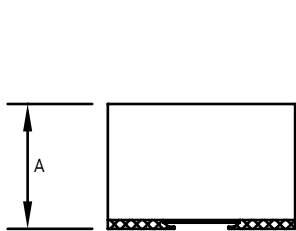
U.S. Standard (mm)

PART NUMBER	A (MAX.)	B (MAX.)	C (MAX.)	D (MIN)	E (MIN)	F (MAX.)
RL-7505	0.094 (2.40)	0.150 (3.80)	0.150 (3.80)	0.028 (0.70)	0.028 (0.70)	0.098 (2.50)

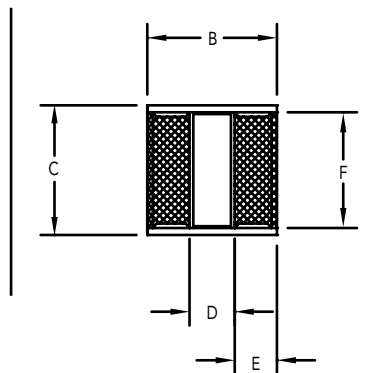
PART NUMBER	PART WEIGHT
RL-7505	0.15g (0.005oz)

G (REF.)	H (REF.)	I (REF.)
0.098 (2.50)	0.039 (1.00)	0.059 (1.50)

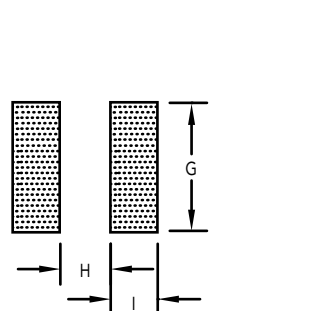
FRONT VIEW



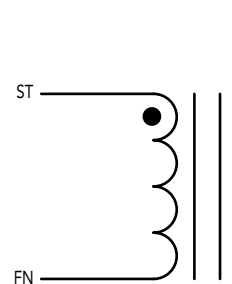
BOTTOM VIEW



RECOMMENDED LAND PATTERN



SCHEMATIC



RL-7505

Renco Part No. RL-7505	Inductance (μ H)	DCR Max. (Ohms)	I _{rms} (mA)	SRF Typ. (MHz)
RL-7505-1R0M	1.0 \pm 30%	0.02	1000.0	120.0
RL-7505-2R2M	2.2 \pm 30%	0.06	800.0	60.0
RL-7505-4R7M	4.7 \pm 30%	0.11	600.0	35.0
RL-7505-100M	10.0 \pm 30%	0.15	300.0	22.0
RL-7505-220M	22.0 \pm 30%	0.32	180.0	15.0
RL-7505-470M	47.0 \pm 30%	0.64	150.0	12.0
RL-7505-101M	100.0 \pm 30%	1.74	90.0	9.0
RL-7505-221M	220.0 \pm 30%	4.51	80.0	6.0
RL-7505-331M	330.0 \pm 30%	8.63	70.0	4.2
RL-7505-391M	3900 \pm 30%	9.11	60.0	3.8
RL-7505-471M	470.0 \pm 30%	9.52	50.0	3.5
RL-7505-561M	560.0 \pm 30%	10.14	50.0	3.0
RL-7505-681M	680.0 \pm 30%	11.83	40.0	2.6
RL-7505-102M	1000.0 \pm 30%	14.30	30.0	2.1
RL-7505-152M	1500.0 \pm 30%	29.90	25.0	1.7
RL-7505-222M	2200.0 \pm 30%	36.40	20.0	1.5

NOTES:

1. ELECTRICAL SPECIFICATIONS MEASURED AT 25°C
2. I_{rms} - CURRENT THAT CAUSES THE TEMPERATURE TO RISE APPROX. 40°C ABOVE AMBIENT OF 25°C
3. INDUCTANCE TESTED AT 100 kHz, 0.1 V_{rms}



RENCO ELECTRONICS INC.

595 International Place, Rockledge, FL 32955-4200 USA • www.rencousa.com • ISO 9001 Certified
Toll Free Engineering Hot Line: 800.645.5828 • P: 321.637.1000 • F: 321.637.1600

