

# HSE ROHS CE

## SPECIFICATIONS

Rated(额定参数): 300V,20A  
 Dielectric strength(抗电强度): AC2000V/1 Minute  
 Insulation Resistance(绝缘电阻):1000MΩ Min  
 Contact Resistance(接触电阻):20mΩ Max  
 Screw Torque(扭矩): 0.4Nm (3.5Lb.in)  
 Wire Range(线径):28~12AWG  
 Strip length(剥线长度):6~7mm  
 Temp. range(操作温度): -40℃~+105℃  
 MAX Soldering(瞬时温度):+250℃,5s

Housing Material(塑件): PA66 (UL94 V-0)  
 Contact(端子): Brass, Tin plating(黄铜镀锡)  
 Clamp(方块): Brass/Steel(铜/铁), Ni plating(镍鍍)  
 Screw (螺丝): M2.5, Steel, Zinc plating(钢,镀锌)

PITCH RANGE		NOMINAL DIMENSION RANGE									
IN	MM	IN	MM	IN	MM	IN	MM				
TO	6	OVER	10	OVER	30	OVER	60	OVER	100	OVER	150
6	10	TO	24	TO	30	TO	60	TO	100	TO	150
±0.10	±0.15	±0.25	±0.30	±0.30	±0.50	±0.70	±1.00				

## Ordering Information

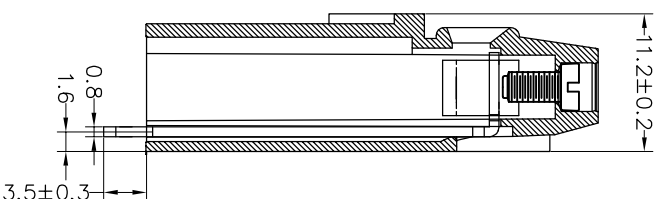
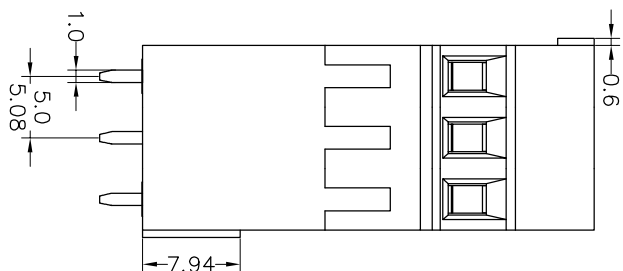
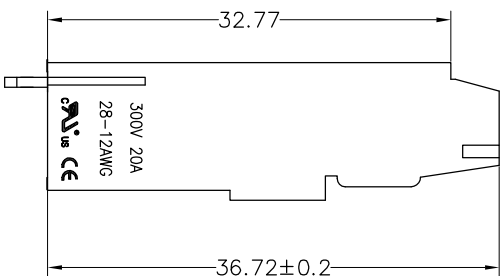
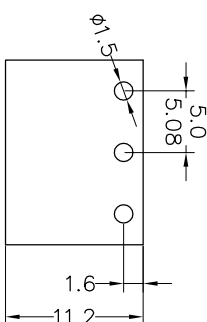
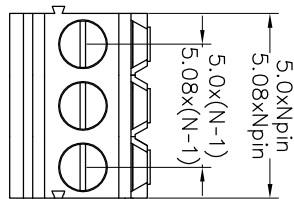
JL 500HH - XXX XX X X 1

Pitch  
500=5.0PH  
508=5.08PH

No.of pins  
2P,3P,4P~12P

Housing Color  
B=Black  
G=Green  
U=Blue  
R=Red  
W=White  
Y=Yellow  
O=Orange  
E=Grey

Packing  
0=Pe bog  
A=Troy



REV	DATE	MODIFICATION DESCRIPTION	CHANGE	DIM	TOL	APPROVE	OPERATION	SCALE	FIT	TITLE:
A0	2019.07.03	NEW DRAWING		Angle	±3°	CHECK	±0.20	A4	1/1	PART NO. JL500HH-XXXXXXXX1
1							±0.30			5.0/5.08mm Terminal Blocks Female

**JILIN** 深圳市锦凌电子有限公司  
 SHENZHEN JINLING ELECTRONIC CO.,LTD  
 Tel: 86-755-2997-5806/5802 Fax: 86-755-2997-5992

Recommended P.C.B Layout(Top Side)  
 (PCB BOARD TOLERANCE±0.05)