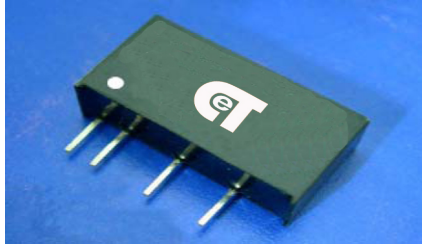


CT-14D-3W SERIES

1000Vdc Isolation Single Output 3 Watt Dc-Dc Converter



FEATURES:

- 7PIN SIP Package
- High Efficiency up to 87%
- Unregulated Output Types
- Internal SMD Construction
- No External Component Required ● Industry Standard Pinout
- Operating Temperature: -40°C TO +85°C



Specifications typical at TA=25°C, nominal input voltage and rated output current unless otherwise specified

Part Number	Output Voltage	Output Current	Efficiency
	Vdc	mA	%TYP
CT-05S05N3W	5	600	82
CT-05S09N3W	9	333	85
CT-05S12N3W	12	250	82
CT-05S15N3W	15	200	85
CT-12S05N3W	5	600	82
CT-12S09N3W	9	333	85
CT-12S12N3W	12	250	86
CT-12S15N3W	15	200	87
CT-24S05N3W	5	600	82
CT-24S09N3W	9	333	85
CT-24S12N3W	12	250	85
CT-24S15N3W	15	200	86

Input Specifications

Parameters	Conditions	Min	Typ	Max	Units
Voltage Tolerance	Vo, Io Nom			±10	%
Filter	Capacitor				

Output Specifications

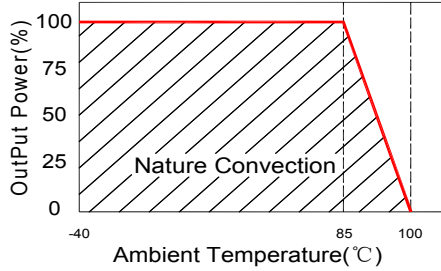
Parameters	Conditions	Min	Typ	Max	Units
Voltage Tolerance	100% full load			±5	%
Short Circuit Protection	Short Term			1 Sec	
Line Regulation	For 1.0% OF Vin		1.2		%
Load Regulation	10% To 100% F.L			10	%
Ripple & Noise	BW=DC To 20MHz			100	mVp-p
Transient response setting time	50% load step change		350		us

General Specifications

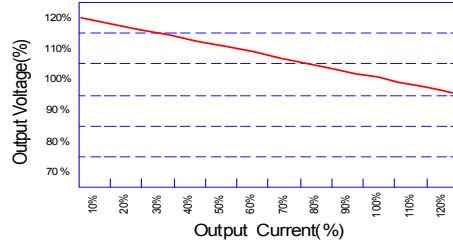
Parameters	Conditions	Min	Typ	Max	Units
Isolation Resistance	500Vdc	1000			MΩ
Switching Frequency	Full load,nominal input		100		KHz
Operation Temperature		-40		+85	°C
Humidity	Non Condensing			95	%
Cooling	Free air Convection				
Case material	DAP				
MTBF	MIL-HDBK-217F@25°C	3500000			Hours
Weight			2.7		g
Dimensions			19.5x7.1x10.0		mm

1000Vdc Isolation Single Output 3 Watt Dc-Dc Converter

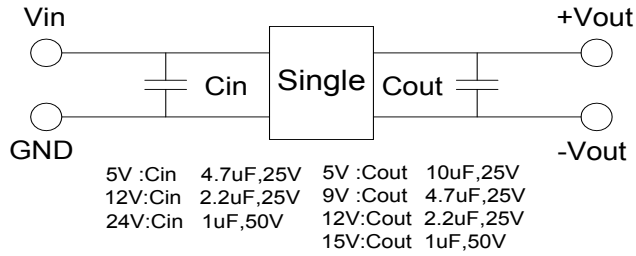
Temperature Derating Graph



Tolerance Envelope Graph



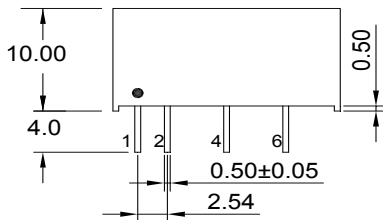
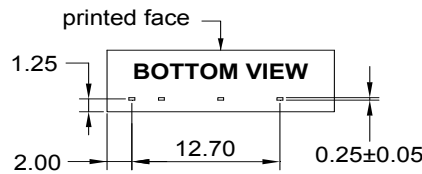
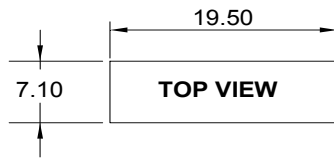
Recommended Test Circuit



Part Number

14D - 05 S 05 N 3W
 A B C D E F
 A:Series
 B:Input Voltage
 C:Single Output
 D:Output Voltage
 E:Unregulated(N)
 F:Output Power

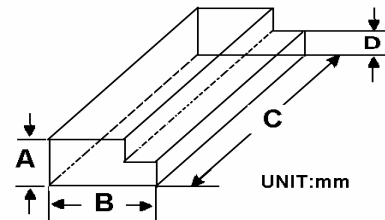
Markings and dimensions



UNIT:mm Unless otherwise specified,all tolerances are ±0.25

PIN Connection				
PIN	1	2	4	6
Single	+Vin	-Vin	-Vout	+Vout

Packaging



Size(mm)			
A	B	C	D
9.5	16.5	522	5.0