

RL-7700-2HC

HIGH CURRENT CERAMIC WIREWOUND CHIP INDUCTORS

DESCRIPTION

- High Current Chip Inductor

ENVIRONMENTAL DATA

- Storage temperature range: -55°C to +130°C
- Operating temperature range: -40°C to +130°C

PACKAGING INFORMATION

- Packaging information: pg. 490

FEATURES & APPLICATIONS

- Ceramic core wirewound construction
- No batch-to-batch variations in inductance
- High reliability due to ceramic wirewound construction
- Widely used in communication applications such as cellular phones and other high frequency electronic devices

Verify operation with sample in actual circuit. Order samples at www.rencousa.com.

MECHANICAL DIMENSIONS

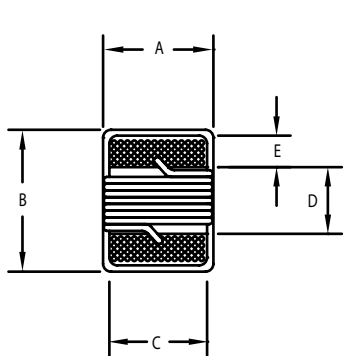
U.S. Standard (mm)

PART NUMBER	A (MAX.)	B (MAX.)	C (MAX.)	D (MAX.)	E (MAX.)	F (MAX.)	G (MAX.)
RL-7700-2HC	0.044 (1.12)	0.070 (1.80)	0.029 (0.76)	0.033 (0.86)	0.012 (0.33)	0.040 (1.02)	0.014 (0.38)

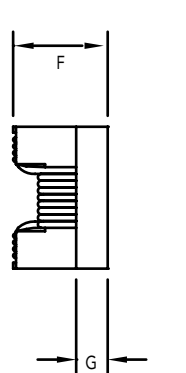
PART NUMBER	PART WEIGHT
RL-7700-2HC	0.14g (0.005oz)

H (REF.)	I (REF.)	J (REF.)
0.025 (0.64)	0.040 (1.02)	0.025 (0.64)

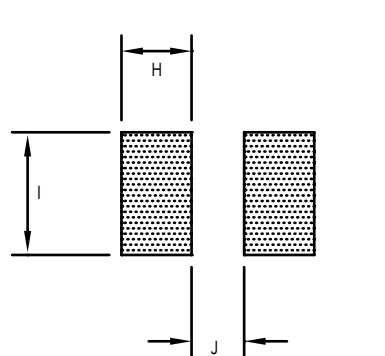
BOTTOM VIEW



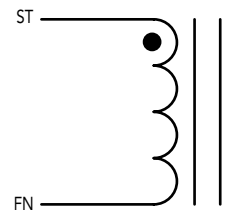
SIDE VIEW



RECOMMENDED LAND PATTERN



SCHEMATIC



RENCO ELECTRONICS INC.

595 International Place, Rockledge, FL 32955-4200 USA • www.rencousa.com • ISO 9001 Certified
Toll Free Engineering Hot Line: 800.645.5828 • P: 321.637.1000 • F: 321.637.1600



RL-7700-2HC

Renco Part No. RL-7700-2HC	Tolerance Available	L (nH)	DCR Max. (Ohms)	Q Min.	SRF Min. (MHz)	Testing Frequency (MHz)	Irms (mA) Max.
RL-7700-2HC-1N6	K,J	1.6	0.030	24.0	12500.0	250.0	2400.0
RL-7700-2HC-3N6	K,J	3.6	0.048	24.0	5900.0	250.0	2300.0
RL-7700-2HC-3N9	K,J	3.9	0.054	25.0	5900.0	250.0	2200.0
RL-7700-2HC-6N8	K,J	6.8	0.054	35.0	5800.0	250.0	2100.0
RL-7700-2HC-7N5	K,J	7.5	0.059	35.0	3700.0	250.0	2100.0
RL-7700-2HC-10N	K,J,G	10.0	0.071	38.0	3700.0	250.0	2000.0
RL-7700-2HC-12N	K,J,G	12.0	0.075	38.0	3000.0	250.0	2000.0
RL-7700-2HC-15N	K,J,G	15.0	0.080	38.0	2800.0	250.0	1900.0
RL-7700-2HC-18N	K,J,G	18.0	0.099	40.0	2800.0	250.0	1900.0
RL-7700-2HC-22N	K,J,G	22.0	0.099	42.0	2400.0	250.0	1800.0
RL-7700-2HC-24N	K,J,G	24.0	0.105	42.0	2400.0	250.0	1800.0

NOTES:

1. ELECTRICAL SPECIFICATIONS MEASURED AT 25°C
2. I_{rms} - CURRENT THAT CAUSES THE TEMPERATURE TO RISE APPROX. 40°C ABOVE AMBIENT OF 25°C
3. TEST EQUIPMENT: AGILENT / HP 4287 + AGILENT / HP 8753D OR HP 4291A
4. WHEN HAND SOLDERING, APPLY SOLDER IRON TO THE PRINTED CIRCUIT BOARD ONLY. TEMPERATURE OF THE IRON TIP SHOULD NOT EXCEED 260°C WITH SOLDERING TIME < 3 SECONDS
5. REFLOW SOLDERING CONDITION: 230°C FOR 10 SECONDS MAX

PART NUMBER IDENTIFICATION

RL-7700 -2 HC 3N9 K
 (1) (2) (3) (4) (5)

- (1) SERIES NAME
- (2) DIMENSIONS
- (3) TYPE CODE HC - HIGH CURRENT
- (4) INDUCTANCE CODE
- (5) TOLERANCE CODE: G - ±2% J - ±5% K - ±10%

