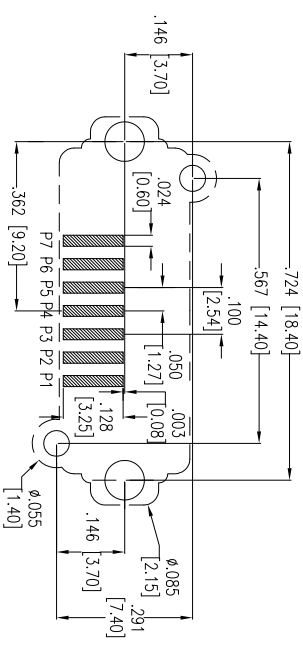
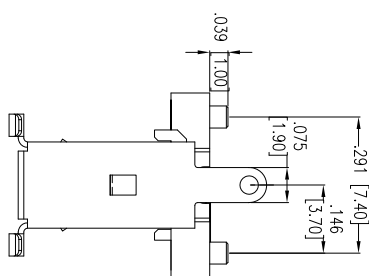
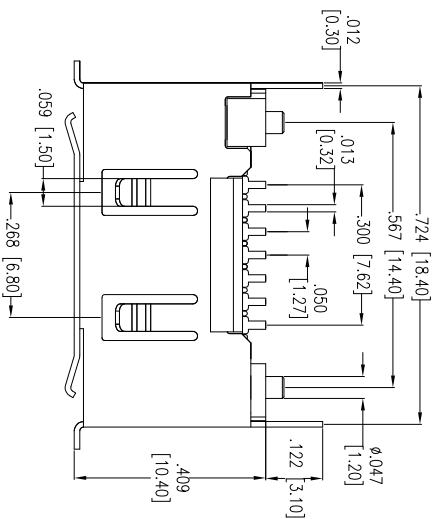
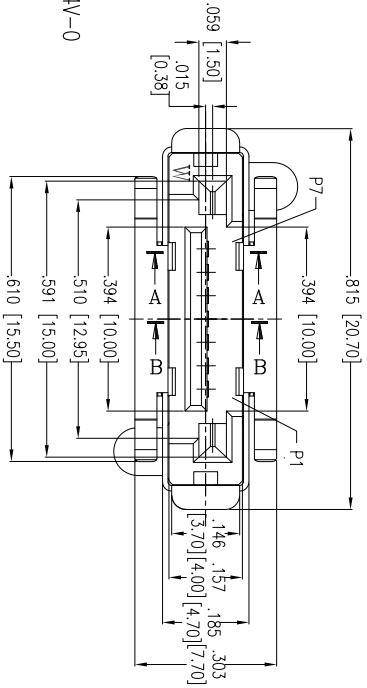


Rev	AWO #	Description	Date	Appr
-		RELEASED	9/01/09	

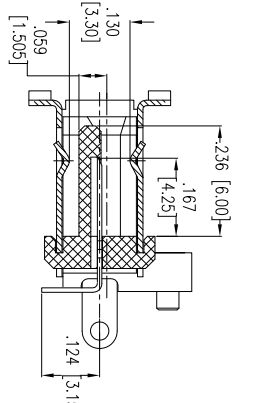
APPROVED: _____
 DATE: _____ TITLE: _____



RECOMMENDED PCB LAYOUT



SECT A-A



SECT B-B

UNLESS OTHERWISE SPECIFIED
 ALL DIMENSIONS ARE INCHES [MM]
 TOLERANCES: EXCEPT AS NOTED
 INCHES: .X ± .10 Ø.X ± .015
 .XX ± .020 .XXX ± .015
 .XXX ± .015 .XXXX ± .010

ADAM TECH

909 Rahway Avenue, Union, NJ 07083
 Phone: 908-687-5000 Fax: 908-687-5710

TITLE: SATA CONNECTOR, 7PIN, STRAIGHT, SMT TYPE

APPROVALS	DATE	SIZE	PART NO.	REV.
DRAWN	DY	X	SATA-W-NP-VT-SMT	-
CHECKED				
APPROVED		REF: S00078T	SCALE: NTS	SHEET 1 OF 1

A
 SPECIFICATIONS:
 Material: Insulator: LCP, rated UL 94V-0
 Insulator color: Black
 Contacts: Brass
 Plating: Gold Flash over Nickel underplate on contact area,
 Tin over Copper underplate on solder tails
 Electrical: Operating voltage: 100 VAC max
 Current rating: 1.5 Amps max
 Contact resistance: 30 mohms max
 Insulation resistance: 1000 Mohms min @ 500 VDC
 Dielectric withstanding voltage: 500 VAC for 1 minute
 Temperature Rating: Operating temperature: -55° C to +125° C
 Environmental: Lead free, RoHS compliant
 Recommended soldering temp: 260° C for 5 seconds

