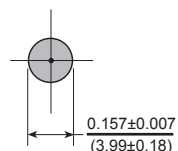
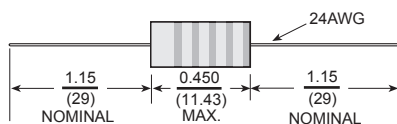
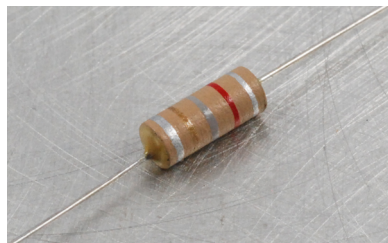


AS50 Axial Shielded Inductors



Dimensions: $\frac{\text{Inches}}{\text{(mm)}}$

Electrical

Rated Current: Inductance will drop < 10% at rated current.

Tolerance: ±10% over the entire inductance range. Tighter tolerances available.

Shielding: < 5% coupling, units side by side at 1 KHz.

Test Procedures: L & Q Measured with HP4342A Q-Meter L for 27 uH~100mH tested on 1KHz LCR Bridge DCR Measured on CH-301, SRF Measured on HP-4191A, HP4291B.

Operating Temp.: -55°C to + 125°C.

Design: To meet MIL-C-15305 Grade 1, Class B.

Physical

Marking (on part): 5 Band Color Code per MIL-C-15305.

Marking (on reel): Manufacturers Name, Part Number, Customers Part Number, Invoice Number, Lot or Data Code.

Packaging (bulk): 500 pieces per bag.

Packaging (tape & reel): 2500 pieces per reel.

For Tape and Reel packaging please add "-TR" to the part number.

Allied Part Number	Inductance (µh)	Tolerance (%)	Q Min.	Test Freq. (MHz)	SRF Min. (MHz)	DCR Max. (Ω)	Rated Current (mA)	Incr. Current (mA)
AS50-R10K-RC	.10	10	50	25.0	400	0.26	3000	3000
AS50-R12K-RC	.12	10	50	25.0	400	0.29	2860	2860
AS50-R15K-RC	.15	10	50	25.0	400	0.34	2600	2600
AS50-R18K-RC	.18	10	50	25.0	400	0.44	2300	2300
AS50-R22K-RC	.22	10	50	25.0	400	0.56	2050	2050
AS50-R27K-RC	.27	10	50	25.0	400	0.90	1625	1625
AS50-R33K-RC	.33	10	47	25.0	325	.122	1400	1400
AS50-R39K-RC	.39	10	47	25.0	390	.161	1220	1220
AS50-R47K-RC	.47	10	47	25.0	264	.218	1060	1060
AS50-R56K-RC	.56	10	45	25.0	249	.290	900	900
AS50-R68K-RC	.68	10	43	25.0	221	.382	790	790
AS50-R82K-RC	.82	10	41	25.0	200	.450	725	725
AS50-1R0K-RC	1.0	10	42	25.0	156	0.54	2080	2080
AS50-1R2K-RC	1.2	10	43	7.90	144	.070	1840	1840
AS50-1R5K-RC	1.5	10	41	7.90	128	0.96	1560	1560
AS50-1R8K-RC	1.8	10	42	7.90	121	.107	1480	1480
AS50-2R2K-RC	2.2	10	42	7.90	108	.142	1290	1290
AS50-2R7K-RC	2.7	10	41	7.90	96.0	.184	1130	1130
AS50-3R3K-RC	3.3	10	41	7.90	88.0	.260	950	950
AS50-3R9K-RC	3.9	10	41	7.90	84.0	.354	815	815
AS50-4R7K-RC	4.7	10	42	7.90	72.0	.168	710	710
AS50-5R6K-RC	5.6	10	42	7.90	69.0	.511	680	680
AS50-6R8K-RC	6.8	10	42	7.90	62.0	.750	560	560
AS50-8R2K-RC	8.2	10	46	7.90	58.0	.828	535	535
AS50-100K-RC	10	10	46	2.50	53.0	1.27	532	432
AS50-120K-RC	12	10	50	2.50	47.0	1.76	368	368
AS50-150K-RC	15	10	50	2.50	41.0	2.30	325	325
AS50-180K-RC	18	10	50	2.50	43.0	.667	596	235
AS50-220K-RC	22	10	50	2.50	38.0	.742	565	220
AS50-270K-RC	27	10	50	2.50	36.0	.850	526	200
AS50-330K-RC	33	10	50	2.50	33.0	.928	505	190
AS50-390K-RC	39	10	50	2.50	29.4	1.28	429	180
AS50-470K-RC	47	10	55	2.50	26.5	1.48	400	175
AS50-560K-RC	56	10	55	2.50	25.0	1.64	380	160
AS50-680K-RC	68	10	55	2.50	23.0	2.20	328	150
AS50-820K-RC	82	10	55	2.50	14.0	1.96	349	140
AS50-101K-RC	100	10	65	2.50	12.0	2.28	322	120
AS50-121K-RC	120	10	65	0.79	11.2	2.45	311	95
AS50-151K-RC	150	10	65	0.79	10.5	2.79	294	90
AS50-181K-RC	180	10	65	0.79	10.0	3.08	277	85
AS50-221K-RC	220	10	65	0.79	9.40	3.48	251	80
AS50-271K-RC	270	10	65	0.79	8.00	4.55	231	70
AS50-331K-RC	330	10	65	0.79	7.30	5.10	215	65
AS50-391K-RC	390	10	65	0.79	6.90	5.62	205	60
AS50-471K-RC	470	10	70	0.79	6.50	6.45	192	58
AS50-561K-RC	560	10	70	0.79	6.00	8.00	174	55
AS50-681K-RC	680	10	75	0.79	5.60	8.85	163	50
AS50-821K-RC	820	10	70	0.79	4.80	10.4	151	45
AS50-102K-RC	1000	10	65	0.79	4.50	12.1	139	40
AS50-122K-RC	1200	10	70	.250	2.60	15.1	125	35
AS50-152K-RC	1500	10	70	.250	2.50	16.8	119	33
AS50-182K-RC	1800	10	70	.250	2.30	19.1	111	30
AS50-222K-RC	2200	10	70	.250	2.20	22.0	103	27
AS50-272K-RC	2700	10	70	.250	2.10	25.1	97	25
AS50-332K-RC	3300	10	70	.250	2.00	33.3	85	22
AS50-392K-RC	3900	10	70	.250	1.80	36.8	80	20
AS50-472K-RC	4700	10	70	.250	1.70	51.2	68	19
AS50-562K-RC	5600	10	70	.250	1.60	54.6	66	17
AS50-682K-RC	6800	10	70	.250	1.50	62.0	62	16
AS50-822K-RC	8200	10	70	.250	1.40	86.6	52	15
AS50-103K-RC	10000	10	70	.250	1.30	93.1	50	14
AS50-123K-RC	12000	10	50	.079	.880	.84	53	13
AS50-153K-RC	15000	10	50	.079	.780	.97	49	12
AS50-183K-RC	18000	10	50	.079	.720	1.04	48	10
AS50-223K-RC	22000	10	50	.079	.570	1.45	40	9
AS50-273K-RC	27000	10	50	.079	.460	1.95	34	8
AS50-333K-RC	33000	10	50	.079	.420	2.22	32	7
AS50-393K-RC	39000	10	50	.079	.420	2.42	31	6
AS50-473K-RC	47000	10	50	.079	.370	3.17	27	5.5
AS50-563K-RC	56000	10	50	.079	.360	3.62	25	5
AS50-683K-RC	68000	10	50	.079	.350	4.10	24	4
AS50-823K-RC	82000	10	50	.079	.340	4.40	23	3.5
AS50-104K-RC	100000	10	50	.079	.320	4.84	22	3

All specifications subject to change without notice.