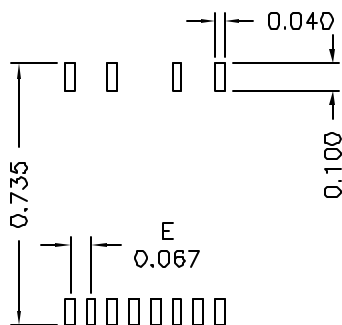
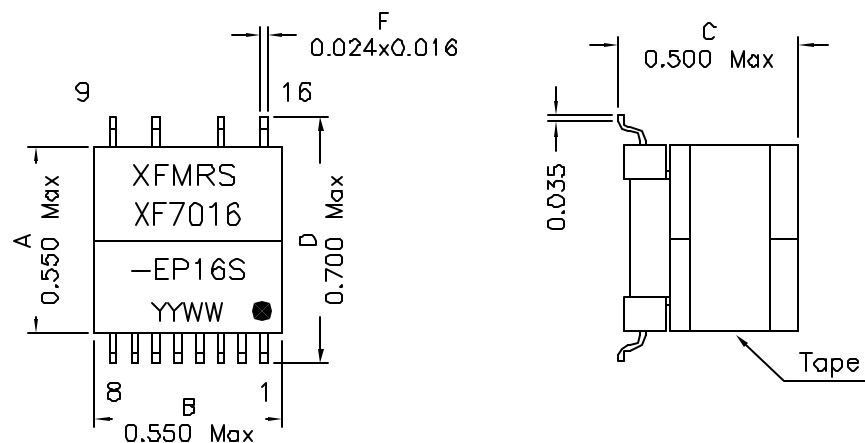


1. Mechanical Dimensions:



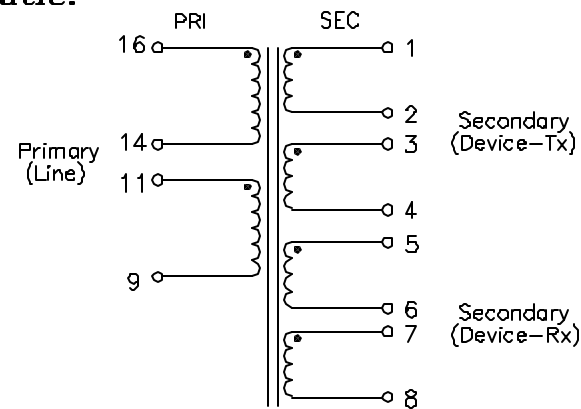
(SUGGESTED PAD LAYOUT)

Notes:

- Solderability: Leads shall meet MIL-STD-202G, Method 208H for solderability.
- Flammability: UL94V-0
- ASTM oxygen index: > 28%
- Insulation System: Class F 155°C. UL file E151558
- Operating Temperature Range: All listed parameters are to be within tolerance from -40°C to +85°C
- Storage Temperature Range: -55°C to +125°C
- Aqueous wash compatible
- SMD Lead Coplanarity: $\pm 0.004^*$ (0.102mm)
- Electrical and mechanical specifications 100% tested
- RoHS Compliant Component

DOC REV: A/1

2. Schematic:



3. Electrical Specifications: @25°C

- QCL: Pins 16-9 701uH \pm 5.8% @10KHz 0.1V, Tie Pins 14+11
- LL: Pins 16-9 32uH Max @100KHz 0.1V, Tie Pins 14+11 & 1-8
- LL: Pins 1-4 4uH Max @100KHz 0.1V, Tie Pins 2+3 & all else
- LL: Pins 5-8 8uH Max @100KHz 0.1V, Tie Pins 6+7 & all else
- CW/W: Pri to Sec-TX 40pF Max @100KHz 1V, Tie Pins 14+11 & 1-4
- CW/W: Pri to Sec-RX 45pF Max @100KHz 1V, Tie Pins 14+11, 5-8
- CW/W: Sec-TX to Sec-RX 35pF Max @100KHz 1V, Tie Pins 2+3, 6+7
- TURNS RATIO: Pins 16-14:1-2 = 4.25 \pm 2.6%
- TURNS RATIO: Pins 16-14:5-6 = 2.08 \pm 2.0%
- TURNS RATIO: Pins 11-9:1-2 = 3.86 \pm 2.6%
- TURNS RATIO: Pins 11-9:7-8 = 1.89 \pm 2.0%
- TURNS RATIO: Pins 11-9:3-4 = 3.85 \pm 2.6%
- DCR: Pins 16-14 3.1 Ohms Max
- DCR: Pins 11-9 2.35 Ohms Max
- DCR: Pins 1-2 0.700 Ohms Max
- DCR: Pins 3-4 0.700 Ohms Max
- DCR: Pins 5-6 1.20 Ohms Max
- DCR: Pins 7-8 1.20 Ohms Max
- THD: -85dB Min, 20KHz, 15Vp-p input, 5.6 Ohm load (1-4),
300 Ohms load 5-8, 100 Ohm Input
- HIPOT: 1875Vac, PRI to SEC

XFMRs Inc
www.XFMRs.com

Title:
HDSL TRANSFORMER

UNLESS OTHERWISE SPECIFIED
TOLERANCES:
.xxx \pm 0.010
Dimensions in INCH
SHEET 1 OF 1

P/N: XF7016-EP16S	REV. A
DWN.	Kang Chen
CHK.	YK Liao
APP.	BW
May-02-06	May-02-06
May-02-06	May-02-06

PROPRIETARY Document is the property of XFMRs Group & is not allowed to be duplicated without authorization.