

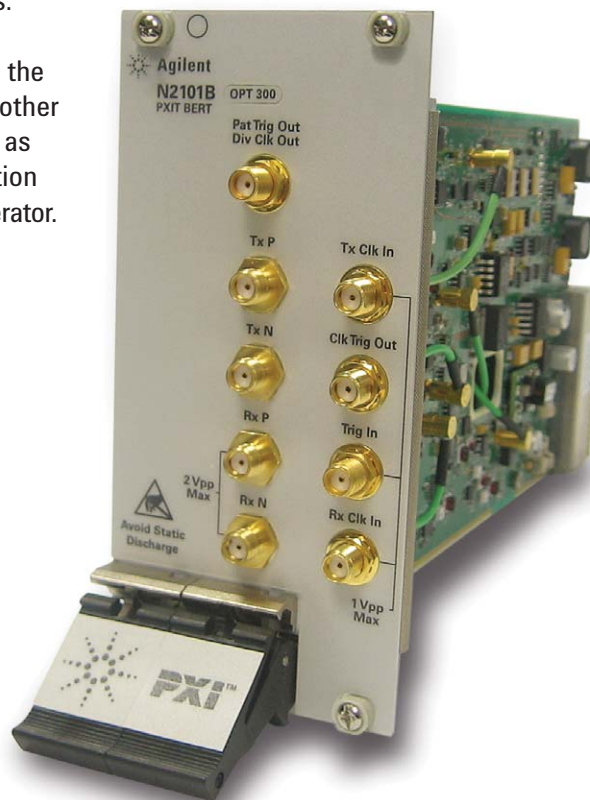
Agilent PXIT 10.3125 Gb/s Bit Error Ratio Tester N2101B

The N2101B PXIT 10.3125 Gb/s Bit Error Ratio Tester (BERT) consists of a high accuracy clock source, data pattern generator, and error detector. It will automatically perform bit error ratio analysis to characterize the quality of devices at 12 standard internal rates from 155 Mb/s to 8.5 Gb/s.

In conjunction with a synthesizer such as the Agilent N2099A, the N2101B BERT can operate at any rate up to 10.3125 Gb/s.

To realize the most complete value of the N2101B it can be combined with the other Agilent PXIT family of products such as the N2100B PXIT Digital Communication Analyzer and the N2102B Pattern Generator.

[Data Sheet](#)



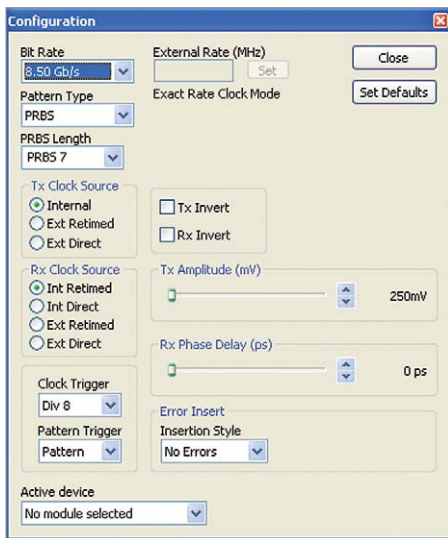
Agilent Technologies

Functionality

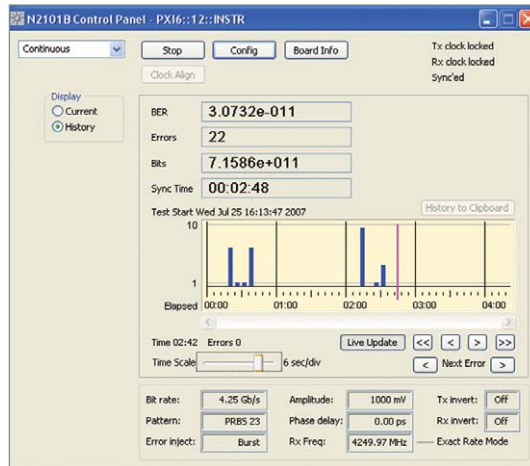
- Single instrument 3-slot wide PXI card containing pattern generation with error detection
- Easily combined with DCA, Synthesizer, Pattern Generator or multiple BERT modules in a PXI chassis
- Bit Error Rate in three modes - History (GUI only), Continuous, and Time Window
- Automatic clock data align
- Eye opening measured and/or extrapolated to a defined error rate
- Jitter Bathtub display and analysis
- Error injection: single error or error rate injection

Features

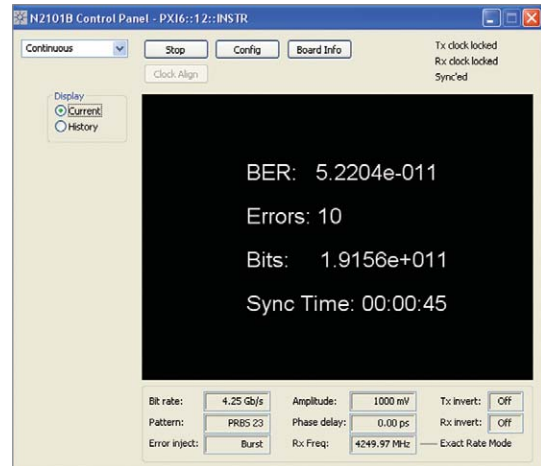
- Significantly smaller than a conventional BERT
- Differential data generation and analysis
- User selectable data patterns:
 - PRBS $2^n - 1$, $n=7, 9, 11, 15, 23, 31$
 - K28.5, K28.7 and CR Pat
- User defined patterns
 - 2048 bits maximum length
 - 16 Kbytes if pattern length is integer multiple of 64
- Pattern generation and BER measurements using the internal clock source for the following rates:
 - 155 Mb/s (OC-3/STM-1)
 - 622 Mb/s (OC-12/STM-4)
 - 1.0625 Gb/s (1xFibre Channel)
 - 1.25 Gb/s (Gigabit Ethernet)
 - 2.125 Gb/s (2xFibre Channel)
 - 2.488 Gb/s (OC-48/STM-16)
 - 2.500 Gb/s (Parallel Optics, PCI-Express)
 - 3.125 Gb/s (Xaui)
 - 4.25 Gb/s (4xFibre Channel)
 - 5.0 Gb/s (Parallel Optics, PCI-Express II)
 - 6.25 Gb/s (Double XAUI)
 - 8.5 Gb/s (8xFibre Channel)
- Pattern generation and BER measurements using an external clock at any rates from 622 Mb/s up to 10.3125 Gb/s. Therefore the N2101B can generate patterns and perform BER measurements on these standard rates.
 - 9.95 Gb/s (OC196/STM64)
 - 10.3125 Gb/s (10 Gigabit Ethernet)



The user friendly configuration screen.



Bit Error Rate: History Mode.



Bit Error Rate: Continuous Mode

Performance Specifications

Pattern generator

Output jitter	2.5 ps RMS (Max) <i>1.5 ps RMS characteristic</i>
Rise/Fall times (20-80%)	25 ps (Max) <i>22 ps characteristic</i>
Output voltage range (single-ended)	250 mV to 1 V
Amplitude resolution	5 mV

Error detector

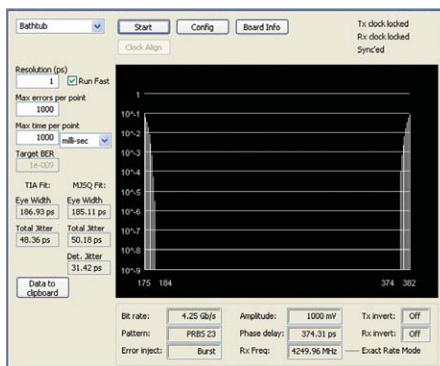
Input range (differential)	50 mV to 2 V
Input sensitivity (differential)	50 mV
Input impedance (single ended)	<i>50 Ohm (characteristic)</i>
Input impedance (differential)	<i>100 Ohm (characteristic)</i>
Phase margin sweep range < 8 Gb/s	> 2 UI
Phase margin sweep range > 8 Gb/s	200 ps

Clocks

Divided clock rate outputs	1,2,4,8 & 128 (output on separate port)*
Pattern trigger	Triggers every 64th pattern for PRBS
Pattern trigger/clock output voltage	1 V pp (characteristic)
Clock voltage output (dc coupled)	400 mV to 1.1 V (characteristic)
External clock input voltage range	500 mV to 1 V (characteristic)
External clock input frequency range	500 MHz to 10.7 GHz

* For 155 Mb/s there is only one clock output option available (the divide by 1)

Note: Unless stated otherwise signals are AC coupled and 50 ohm terminations are expected.



Jitter Bathtub display with corresponding eye width, total Jitter, and deterministic Jitter measurements.

Software

The N2101B BERT and its accompanying software fully complies with PXI specifications. To fulfill this a Windows® application and DLL are provided. The Windows application enables the user to control the instrument without any user development required. The DLL provides an API through which custom applications can be easily developed to integrate the BERT. For further ease of programming and compatibility, example code is supplied. In addition to the DLL API, ActiveX Control extends programmability to any ActiveX container or COM compliant programming environment. This includes Visual C++, Visual Basic, C#, Excel, LabView and many other environments.

Software features include:

- A DLL providing the functions of the API.
- An ActiveX Control wrapper for the DLL providing the same functions.
- A Windows application control panel.

The following sample code is also provided:

- C++ sample code shows how to use the DLL directly.
- Visual Basic sample code shows how to use the ActiveX Control.
- C# sample code also shows how to use the ActiveX Control.

Ordering

N2101B PXIT BERT Option 300 155 Mb/s to 10.3125 Gb/s module



Agilent Email Updates

www.agilent.com/find/emailupdates
Get the latest information on the products and applications you select.



Agilent Direct

www.agilent.com/find/agilentdirect
Quickly choose and use your test equipment solutions with confidence.

Windows is a U.S. registered trademarks of Microsoft Corporation.

EXCEL is a U.S. registered trademarks of Microsoft Corporation.

LabVIEW is a trademark of National Instruments Corporation.

Remove all doubt

Our repair and calibration services will get your equipment back to you, performing like new, when promised. You will get full value out of your Agilent equipment throughout its lifetime. Your equipment will be serviced by Agilent-trained technicians using the latest factory calibration procedures, automated repair diagnostics and genuine parts. You will always have the utmost confidence in your measurements.

Agilent offers a wide range of additional expert test and measurement services for your equipment, including initial start-up assistance onsite education and training, as well as design, system integration, and project management.

For more information on repair and calibration services, go to

www.agilent.com/find/removealldoubt

www.agilent.com

Online assistance:
www.agilent.com/find/pxit

For more information on Agilent Technologies' products, applications or services, please contact your local Agilent office. The complete list is available at:

www.agilent.com/find/contactus

Phone or Fax

United States:
(tel) 800 829 4444
(fax) 800 829 4433

Canada:
(tel) 877 894 4414
(fax) 800 746 4866

China:
(tel) 800 810 0189
(fax) 800 820 2816

Europe:
(tel) 31 20 547 2111

Japan:
(tel) (81) 426 56 7832
(fax) (81) 426 56 7840

Korea:
(tel) (080) 769 0800
(fax) (080) 769 0900

Latin America:
(tel) (305) 269 7500

Taiwan:
(tel) 0800 047 866
(fax) 0800 286 331

Other Asia Pacific Countries:
(tel) (65) 6375 8100
(fax) (65) 6755 0042
Email: tm_ap@agilent.com

Revised: 11/8/06

Product specifications and descriptions in this document subject to change without notice.

© Agilent Technologies, Inc. 2007
Printed in USA, May 13, 2008
5989-7066EN



Agilent Technologies