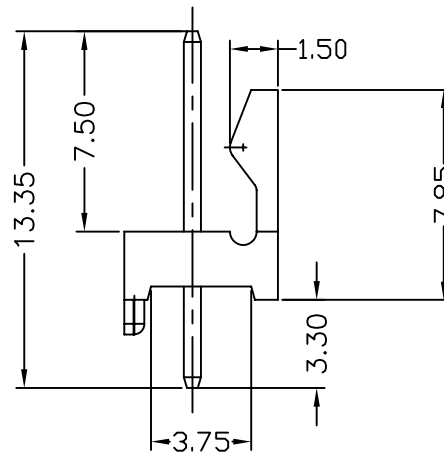
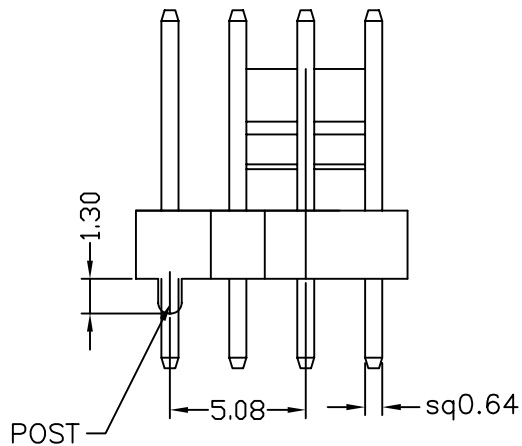


MATERIAL

Insulator : NY66 + 30% Glass fiber
 Contact Pin : Brass

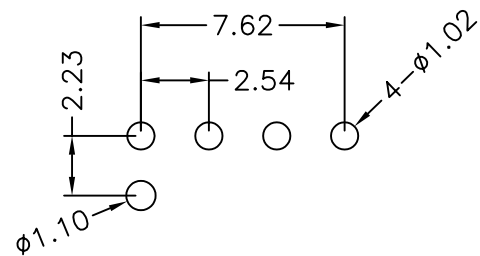
SPECIFICATION

Current Rate : 2.5 AMP
 Dielectric voltage : 250V AC for one minute
 Insulation Resistance : 1000MΩMin.
 Contact Resistance : 20mΩMax
 Operation Temperature : -25°C to + 85°C



744-8 1-04 T W 20
 1 2 3 4 5

- 1. 8: Green Product
- 2. No. of contacts per row
- 3. G: Gold flash
- S: Selective
- T: Tin plated
- 4. W: Nature Color Insulator
- 5. Pinrex internal code.



Recommended P.C.B Layout

				頻銳科技股份有限公司 PINREX TECHNOLOGY CORP.	
		TOLERANCE .0 =±.50 .00 =±.30 .000 =±.XXX .0000=±. ANG.=±3'		OLD PART NO. 2544S-04TW DRAWER <i>Teresa</i> CHECK	
REV. DESCRIPTION DATE		SCALE SIZE SHEET REV. APP'D NONE A4 1 OF 1 C		TITLE 2.54mm WIRE TO BOARD HEADER DIP 180° TYPE NEW PART NO. 744-81-04TW20	
C	ADD TOLERANCE	2011/06/01			DRAW NO. 744-81-04TW20(C版)
B	REVISE ILLUSTRATION	2008/10/28			
A	RELEASE	2005/09/19			