

### FEATURES:

- Suitable for RoHS reflow profile
- High current rating and low DCR
- Special lead wire design to prevent open circuit failure
- Excellent terminal strength to mechanical stress

### APPLICATIONS:

- OA equipments
- PC and notebook
- LCD TV set
- Power supply

### ELECTRICAL SPECIFICATIONS:

Abrakon P/N:	ASPI-1005 Series
Operating Temperature:	-40°C to +85°C
Storage Temperature:	+5°C to +40°C

PART NUMBER	INDUCTANCE (uH)	Tolerance	DCR(Ω) max	IDC (A) max	Inductance Code
ASPI-1005-100	10	M	0.06	2.60	100
ASPI-1005-120	12	M	0.07	2.45	120
ASPI-1005-150	15	M	0.08	2.27	150
ASPI-1005-180	18	M	0.09	2.15	180
ASPI-1005-220	22	M	0.10	1.95	220
ASPI-1005-270	27	M	0.11	1.76	270
ASPI-1005-330	33	K, M	0.12	1.50	330
ASPI-1005-390	39	M	0.14	1.37	390
ASPI-1005-470	47	M	0.17	1.28	470
ASPI-1005-560	56	M	0.19	1.17	560
ASPI-1005-680	68	M	0.22	1.11	680
ASPI-1005-820	82	M	0.25	1.00	820
ASPI-1005-101	100	K	0.35	0.97	101
ASPI-1005-121	120	K	0.40	0.89	121
ASPI-1005-151	150	K	0.47	0.78	151
ASPI-1005-181	180	K	0.63	0.72	181
ASPI-1005-221	220	K	0.73	0.66	221
ASPI-1005-271	270	K	0.97	0.57	271
ASPI-1005-331	330	K	1.15	0.52	331
ASPI-1005-391	390	K	1.30	0.48	391
ASPI-1005-471	470	K	1.48	0.42	471
ASPI-1005-561	560	K	1.90	0.33	561
ASPI-1005-681	680	K	2.25	0.28	681
ASPI-1005-821	820	K	2.55	0.24	821
ASPI-1005-102	1000	K	2.75	0.22	102

### Test Conditions

**Inductance:** 2.52MHz for 10μH ~ 82μH; 1kHz for 100μH ~ 1000μH

**Isat:** ΔL/L (initial) ≥ -10% or ΔT=40°C (Ta=20°C), whichever is lower.

### OPTIONS AND PART IDENTIFICATION

ASPI-1005- [ ] [ ] - [ ]

**Inductance Code**  
Please refer to the table above

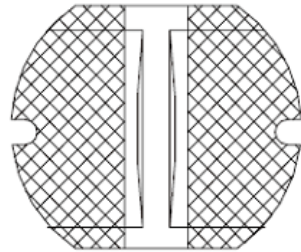
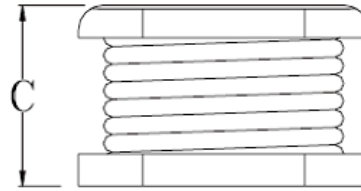
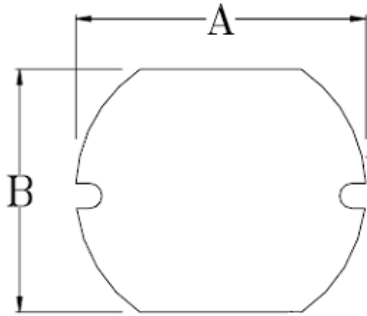
**Tolerance %**  
M: ± 20%  
K: ± 10%

**Packaging**  
T: Tape and Reel (500pcs / reel)

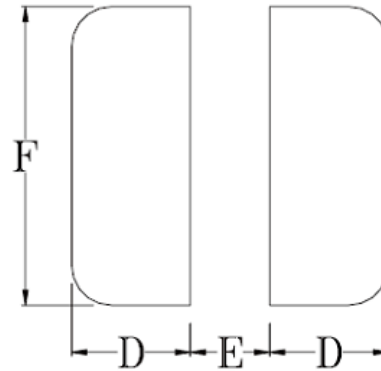




## OUTLINE DRAWING:



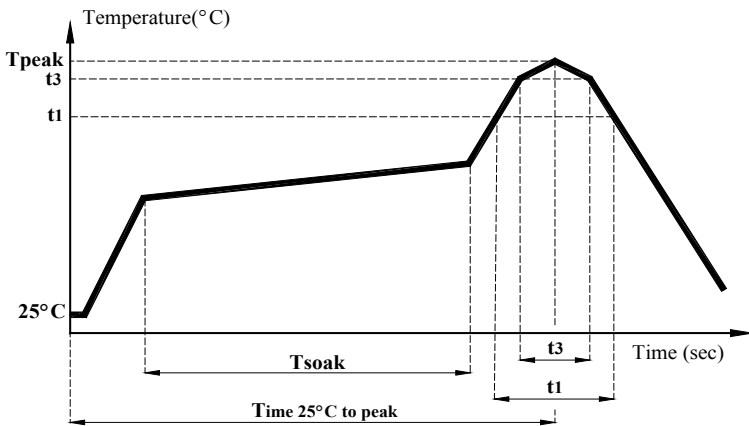
Recommended Land Pattern



A	B	C	D	E	F
10.0±0.4	9.0±0.4	5.4±0.4	3.75 ref.	2.5 ref.	9.5 ref.

Dimension: mm

## REFLOW PROFILE:

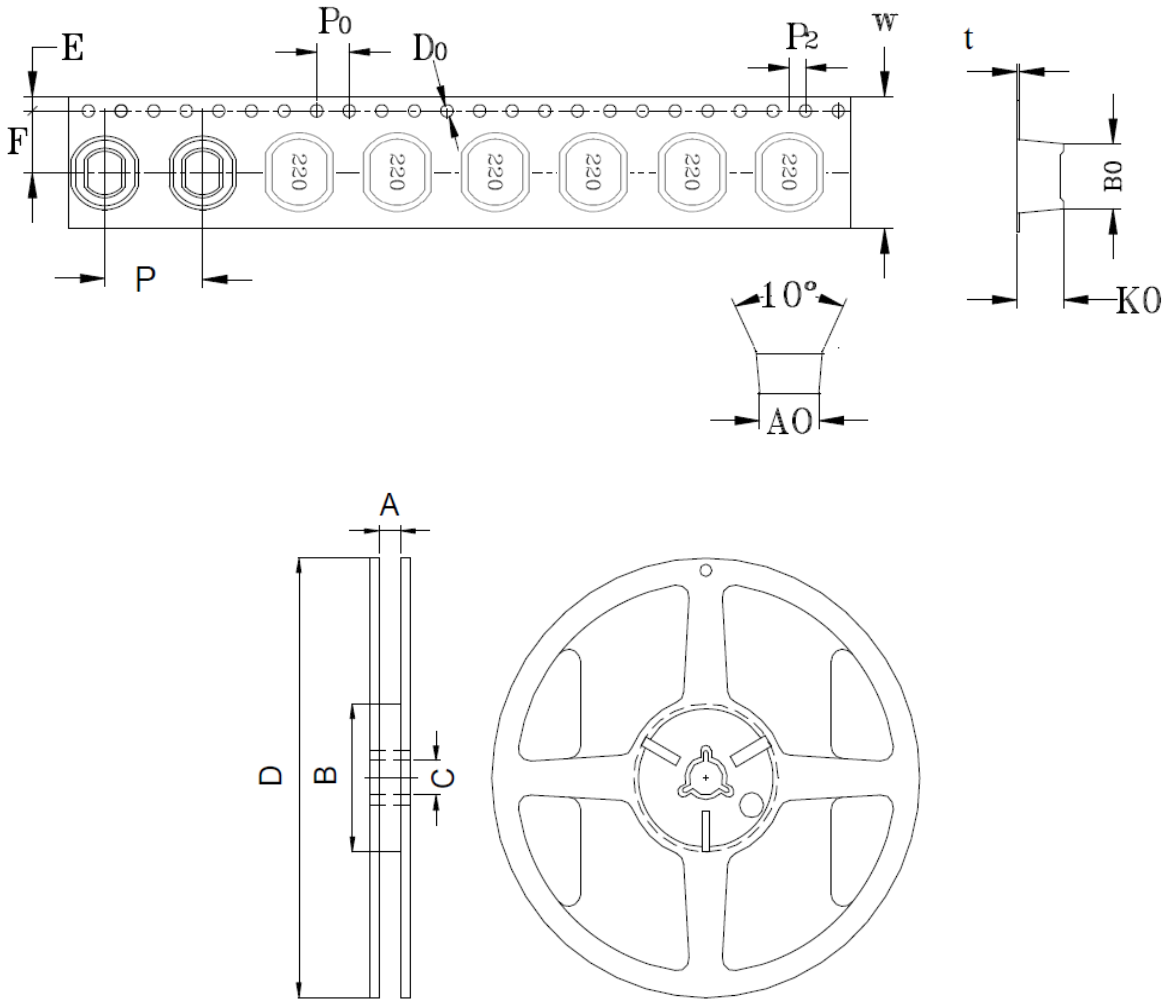


Item	mark	
Temperature rise gradient		3°C/sec (max)
Heating time	Tsoak	50s ~ 150s
Heating temperature		120°C~180°C
Time over 217°C	t1	70 sec
Time within 5°C of actual peak temperature	t3	10~30 sec
Peak temperature	Tpeak	250 (+0 / -5 °C)
Time 25°C to peak Temperature		6 minutes max.



### TAPE & REEL:

T: 500pcs / reel



CARRIER TAPE / SIZE (mm)										REEL 13"×24mm			
A0	B0	K0	F	E	W	P	P <sub>0</sub>	P <sub>2</sub>	t	A	B	C	D
9.3 ± 0.1	10.3 ± 0.1	5.8 ± 0.1	11.5 ± 0.1	1.75 ± 0.1	24 ± 0.3	12 ± 0.1	4 ± 0.1	2 ± 0.1	0.4 ± 0.05	24.5 ± 0.2	100 ± 0.5	13.2 ± 0.3	330 ± 1.0

Dimension: mm

**ATTENTION** Abracon Corporation's products are COTS – Commercial-Off-The-Shelf products; suitable for Commercial, Industrial and, where designated, Automotive Applications. Abracon's products are not specifically designed for Military, Aviation, Aerospace, Life-dependant Medical applications or any application requiring high reliability where component failure could result in loss of life and/or property. For applications requiring high reliability and/or presenting an extreme operating environment, written consent and authorization from Abracon Corporation is required. Please contact Abracon Corporation for more information.