



16OPzV2000(2V2000Ah)



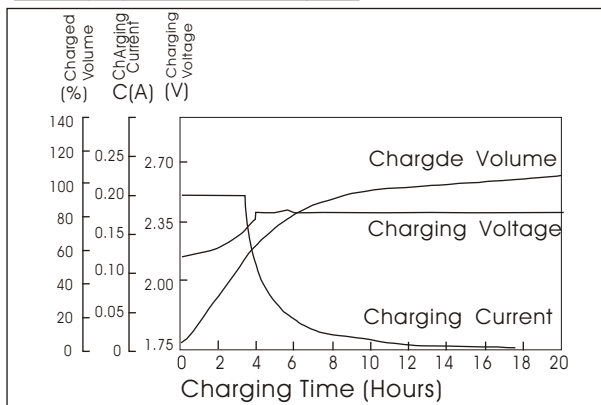
Specifications

Nominal Voltage		2 V
Rated capacity (10 hour rate)		2000 Ah
Dimensions	Total Height	813 mm (32.0 inches)
	Height	772mm (30.39inches)
	Length	397mm (15.6 inches)
	Width	212 mm (8.34inches)
Weight Approx		156Kg (343.2lbs)

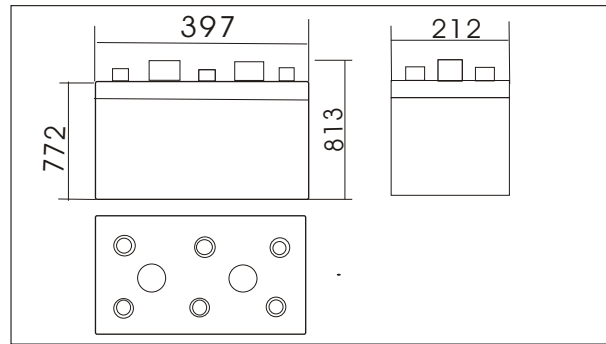
Characteristics

Capacity 25°C(77°F)	10 hour rate(200 A)	2000Ah
	1 hour rate(900A)	900 Ah
	0.5 hour rate(1400A)	700Ah
Capacity affected by Temperature (10hour rate)	40°C(104°F)	102%
	25°C(77°F)	100%
	0°C(32°F)	85%
	-15°C(5°F)	65%
Self-Discharge at 25°C(77°F)	Capacity after 3 month storage	91%
	Capacity after 6 month storage	82%
	Capacity after 12 month storage	64%
Terminal quantity	6	
Charge (constant Voltage)	Initial Charging Current less than 400.0A Voltage 2.25-2.40V	

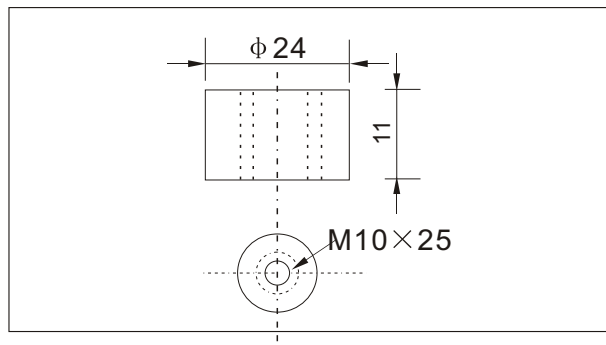
Charging characteristics(25°C)



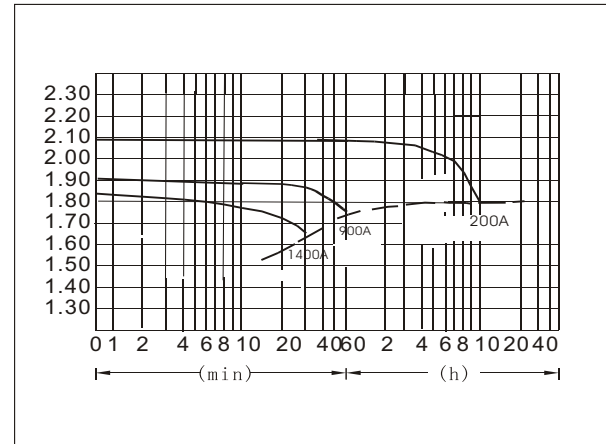
Outer dimensions (mm)



Terminal Type (mm)



Discharge Curves 25°C(77°F)



Cycling Curves

