

The S-19200A/BxxH Series, developed by using high-withstand voltage CMOS technology, is a positive voltage regulator with a high-withstand voltage, low current consumption, and high-accuracy output voltage.

The S-19200A/BxxH Series operates at a high maximum operation voltage of 50 V and a low current consumption of 4.0  $\mu$ A typ. In addition to a built-in low on-resistance transistor which provides a very small dropout voltage and a large output current, this voltage regulator also has a built-in ON / OFF circuit.

An overcurrent protection circuit prevents the load current from exceeding the current capacity of the output transistor, and a built-in thermal shutdown circuit prevents damage caused by heat.

High heat radiation TO-252-5S(A) and HSOP-6 packages enable high-density mounting.

**Caution This product can be used in vehicle equipment and in-vehicle equipment. Before using the product in the purpose, contact to ABLIC Inc. is indispensable.**

## ■ Features

- Output voltage: 2.0 V to 15.0 V, selectable in 0.1 V step
- Input voltage: 3.0 V to 50 V
- Output voltage accuracy:  $\pm 1.0\%$  ( $T_j = +25^\circ\text{C}$ )  
 $\pm 3.0\%$  ( $T_j = -40^\circ\text{C}$  to  $+105^\circ\text{C}$ )
- Current consumption: During operation: 4.0  $\mu$ A typ., 9.0  $\mu$ A max. ( $T_a = -40^\circ\text{C}$  to  $+105^\circ\text{C}$ )  
During power-off: 0.1  $\mu$ A typ., 2.5  $\mu$ A max. ( $T_a = -40^\circ\text{C}$  to  $+105^\circ\text{C}$ )
- Output current: Possible to output 200 mA ( $V_{IN} \geq V_{OUT(S)} + 2.0 \text{ V}$ )<sup>\*1</sup>
- Input and output capacitors: A ceramic capacitor of 0.1  $\mu$ F or more can be used.
- Built-in overcurrent protection circuit: Limits overcurrent of output transistor.
- Built-in thermal shutdown circuit: Prevents damage caused by heat.
- Built-in ON / OFF circuit: Ensures long battery life.
- Operation temperature range:  $T_a = -40^\circ\text{C}$  to  $+105^\circ\text{C}$
- Lead-free (Sn 100%), halogen-free
- Withstand 65 V load dump
- AEC-Q100 qualified<sup>\*2</sup>

\*1. Please make sure that the loss of the IC will not exceed the power dissipation when the output current is large.

\*2. Contact our sales office for details.

## ■ Applications

- Constant-voltage power supply for electrical application for vehicle interior
- Constant-voltage power supply for home electric appliance

## ■ Packages

- TO-252-5S(A)
- HSOP-6

■ **Block Diagram**

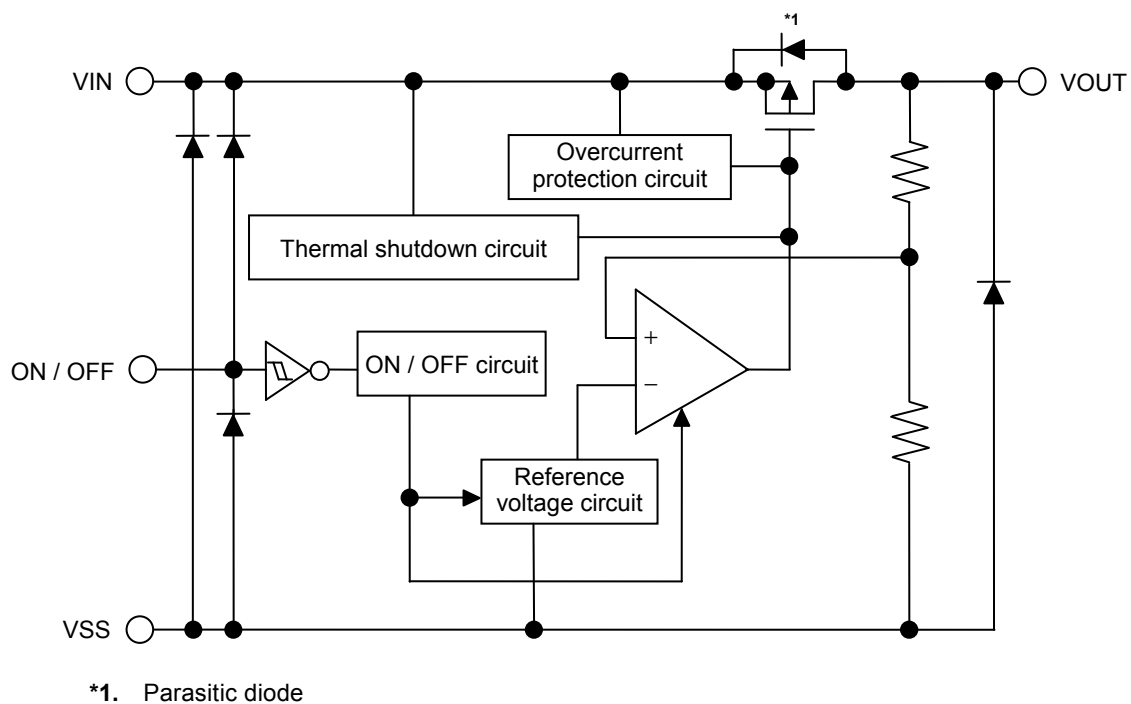


Figure 1

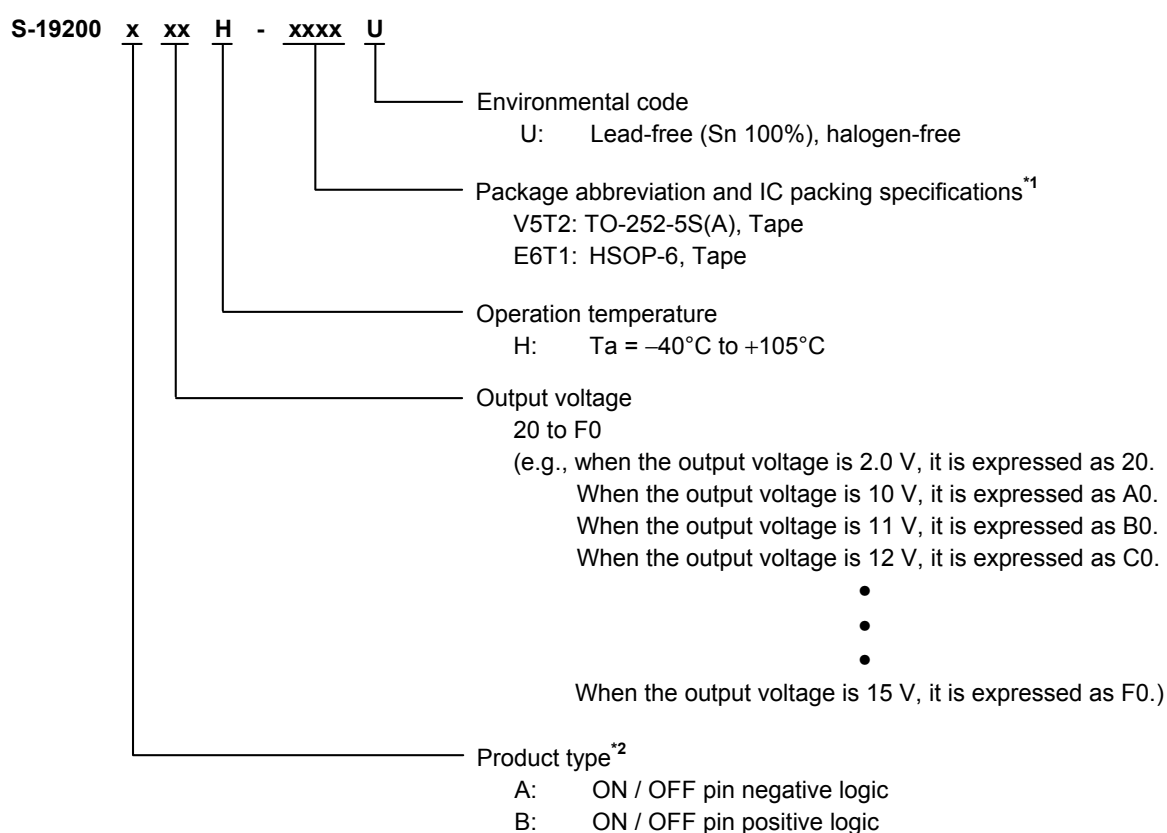
## ■ AEC-Q100 Qualified

This IC supports AEC-Q100 for operation temperature grade 2.  
 Contact our sales office for details of AEC-Q100 reliability specification.

## ■ Product Name Structure

Users can select the product type and output voltage for the S-19200A/BxxH Series. Refer to "1. Product name" regarding the contents of product name, "2. Packages" regarding the package drawings and "3. Product name list" for details of product names.

### 1. Product name



\*1. Refer to the tape drawing.

\*2. Refer to "3. ON / OFF pin" in "■ Operation".

### 2. Packages

**Table 1 Package Drawing Codes**

| Package Name | Dimension    | Tape         | Reel         | Land         |
|--------------|--------------|--------------|--------------|--------------|
| TO-252-5S(A) | VA005-A-P-SD | VA005-A-C-SD | VA005-A-R-SD | VA005-A-L-SD |
| HSOP-6       | FH006-A-P-SD | FH006-A-C-SD | FH006-A-R-S1 | —            |

**3. Product name list**

**3.1 S-19200A/BxxH Series A type**

**Table 2**

| Output Voltage   | TO-252-5S(A)      | HSOP-6            |
|------------------|-------------------|-------------------|
| 3.3 V $\pm$ 1.0% | S-19200A33H-V5T2U | S-19200A33H-E6T1U |
| 5.0 V $\pm$ 1.0% | S-19200A50H-V5T2U | S-19200A50H-E6T1U |

**Remark** Please contact our sales office for products with an output voltage other than those listed above.

**3.2 S-19200A/BxxH Series B type**

**Table 3**

| Output Voltage   | TO-252-5S(A)      | HSOP-6            |
|------------------|-------------------|-------------------|
| 3.3 V $\pm$ 1.0% | S-19200B33H-V5T2U | S-19200B33H-E6T1U |
| 5.0 V $\pm$ 1.0% | S-19200B50H-V5T2U | S-19200B50H-E6T1U |

**Remark** Please contact our sales office for products with an output voltage other than those listed above.

## ■ Pin Configurations

### 1. TO-252-5S(A)

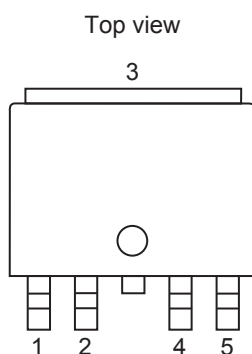


Figure 2

Table 4

| Pin No. | Symbol   | Description        |
|---------|----------|--------------------|
| 1       | VOUT     | Output voltage pin |
| 2       | ON / OFF | ON / OFF pin       |
| 3       | VSS      | GND pin            |
| 4       | NC*1     | No connection      |
| 5       | VIN      | Input voltage pin  |

- \*1. The NC pin is electrically open.  
 The NC pin can be connected to the VIN pin or the VSS pin.

### 2. HSOP-6

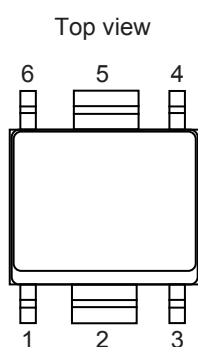


Figure 3

Table 5

| Pin No. | Symbol   | Description        |
|---------|----------|--------------------|
| 1       | VOUT     | Output voltage pin |
| 2       | VSS      | GND pin            |
| 3       | ON / OFF | ON / OFF pin       |
| 4       | NC*1     | No connection      |
| 5       | VSS      | GND pin            |
| 6       | VIN      | Input voltage pin  |

- \*1. The NC pin is electrically open.  
 The NC pin can be connected to the VIN pin or the VSS pin.

■ **Absolute Maximum Ratings**

**Table 6**

(Ta = +25°C unless otherwise specified)

| Item                          | Symbol                | Absolute Maximum Rating   | Unit |
|-------------------------------|-----------------------|---|------|
| Input voltage                 | V <sub>IN</sub>       | V <sub>SS</sub> - 0.3 to V <sub>SS</sub> + 60                         | V    |
|                               | V <sub>ON / OFF</sub> | V <sub>SS</sub> - 0.3 to V <sub>IN</sub> + 0.3 ≤ V <sub>SS</sub> + 60 | V    |
| Output voltage                | V <sub>OUT</sub>      | V <sub>SS</sub> - 0.3 to V <sub>IN</sub> + 0.3 ≤ V <sub>SS</sub> + 60 | V    |
| Junction temperature          | T <sub>j</sub>        | -40 to +125   | °C   |
| Operation ambient temperature | T <sub>opr</sub>      | -40 to +105   | °C   |
| Storage temperature           | T <sub>stg</sub>      | -40 to +125   | °C   |

**Caution** The absolute maximum ratings are rated values exceeding which the product could suffer physical damage. These values must therefore not be exceeded under any conditions.

■ **Thermal Resistance Value**

**Table 7**

| Item                                     | Symbol          | Condition    | Min.    | Typ. | Max. | Unit |      |
|--|-----------------|--------------|---------|------|------|------|------|
| Junction-to-ambient thermal resistance*1 | θ <sub>JA</sub> | TO-252-5S(A) | Board A | -    | 86   | -    | °C/W |
|  |                 |              | Board B | -    | 60   | -    | °C/W |
|  |                 |              | Board C | -    | 38   | -    | °C/W |
|  |                 |              | Board D | -    | 31   | -    | °C/W |
|  |                 |              | Board E | -    | 28   | -    | °C/W |
|  |                 | HSOP-6       | Board A | -    | 96   | -    | °C/W |
|  |                 |              | Board B | -    | 74   | -    | °C/W |
|  |                 |              | Board C | -    | -    | -    | °C/W |
|  |                 |              | Board D | -    | 44   | -    | °C/W |
|  |                 |              | Board E | -    | 41   | -    | °C/W |

\*1. Test environment: compliance with JEDEC STANDARD JESD51-2A

**Remark** Refer to "■ Power Dissipation" and "Test Board" for details.

**■ Electrical Characteristics**

**Table 8 (1 / 2)**

(T<sub>j</sub> = -40°C to +125°C, T<sub>a</sub> = -40°C to +105°C unless otherwise specified)

| Item                                 | Symbol  | Condition  | Min.                                  | Typ.                       | Max.                | Unit                       | Test Circuit |   |
|--------------------------------------|---|--|---------------------------------------|----------------------------|---------------------|----------------------------|--------------|---|
| Output voltage*1                     | V <sub>OUT(E)</sub>                                   | V <sub>IN</sub> = 13.5 V,<br>I <sub>OUT</sub> = 30 mA,<br>-40°C ≤ T <sub>j</sub> ≤ +105°C                      | 2.0 V ≤ V <sub>OUT(S)</sub> < 12.5 V  | V <sub>OUT(S)</sub> × 0.97 | V <sub>OUT(S)</sub> | V <sub>OUT(S)</sub> × 1.03 | V            | 1 |
|                                      |   | V <sub>IN</sub> = V <sub>OUT(S)</sub> + 1.0 V,<br>I <sub>OUT</sub> = 30 mA,<br>-40°C ≤ T <sub>j</sub> ≤ +105°C | 12.5 V ≤ V <sub>OUT(S)</sub> ≤ 15.0 V | V <sub>OUT(S)</sub> × 0.97 | V <sub>OUT(S)</sub> | V <sub>OUT(S)</sub> × 1.03 | V            | 1 |
| Output current*2                     | I <sub>OUT</sub>                                      | V <sub>IN</sub> ≥ V <sub>OUT(S)</sub> + 2.0 V  | 200*4                                 | -                          | -                   | mA                         | 3            |   |
| Dropout voltage*3                    | V <sub>drop</sub>                                     | I <sub>OUT</sub> = 100 mA<br>T <sub>a</sub> = +25°C  | 2.0 V ≤ V <sub>OUT(S)</sub> < 2.2 V   | -                          | 1.0                 | -                          | V            | 1 |
|                                      |   |  | 2.2 V ≤ V <sub>OUT(S)</sub> < 2.4 V   | -                          | 0.8                 | -                          | V            | 1 |
|                                      |   |  | 2.4 V ≤ V <sub>OUT(S)</sub> < 2.6 V   | -                          | 0.6                 | -                          | V            | 1 |
|                                      |   |  | 2.6 V ≤ V <sub>OUT(S)</sub> < 3.0 V   | -                          | 0.45                | -                          | V            | 1 |
|                                      |   |  | 3.0 V ≤ V <sub>OUT(S)</sub> < 3.5 V   | -                          | 0.35                | -                          | V            | 1 |
|                                      |   |  | 3.5 V ≤ V <sub>OUT(S)</sub> < 4.0 V   | -                          | 0.3                 | -                          | V            | 1 |
|                                      |   |  | 4.0 V ≤ V <sub>OUT(S)</sub> < 5.0 V   | -                          | 0.27                | -                          | V            | 1 |
|                                      |   |  | 5.0 V ≤ V <sub>OUT(S)</sub> < 7.0 V   | -                          | 0.23                | -                          | V            | 1 |
|                                      |   |  | 7.0 V ≤ V <sub>OUT(S)</sub> < 9.0 V   | -                          | 0.2                 | -                          | V            | 1 |
|                                      |   |  | 9.0 V ≤ V <sub>OUT(S)</sub> ≤ 15.0 V  | -                          | 0.18                | -                          | V            | 1 |
|                                      |   | I <sub>OUT</sub> = 200 mA<br>T <sub>a</sub> = +25°C  | 2.0 V ≤ V <sub>OUT(S)</sub> < 2.2 V   | -                          | 1.12                | -                          | V            | 1 |
|                                      |   |  | 2.2 V ≤ V <sub>OUT(S)</sub> < 2.4 V   | -                          | 1.02                | -                          | V            | 1 |
|                                      |   |  | 2.4 V ≤ V <sub>OUT(S)</sub> < 2.6 V   | -                          | 0.92                | -                          | V            | 1 |
|                                      |   |  | 2.6 V ≤ V <sub>OUT(S)</sub> < 3.0 V   | -                          | 0.82                | -                          | V            | 1 |
|                                      |   |  | 3.0 V ≤ V <sub>OUT(S)</sub> < 3.5 V   | -                          | 0.72                | -                          | V            | 1 |
|                                      |   |  | 3.5 V ≤ V <sub>OUT(S)</sub> < 4.0 V   | -                          | 0.62                | -                          | V            | 1 |
|                                      |   |  | 4.0 V ≤ V <sub>OUT(S)</sub> < 5.0 V   | -                          | 0.55                | -                          | V            | 1 |
|                                      |   |  | 5.0 V ≤ V <sub>OUT(S)</sub> < 7.0 V   | -                          | 0.5                 | -                          | V            | 1 |
|                                      |   |  | 7.0 V ≤ V <sub>OUT(S)</sub> < 9.0 V   | -                          | 0.45                | -                          | V            | 1 |
|                                      |   |  | 9.0 V ≤ V <sub>OUT(S)</sub> ≤ 15.0 V  | -                          | 0.4                 | -                          | V            | 1 |
| Line regulation                      | $\frac{\Delta V_{OUT1}}{\Delta V_{IN} \cdot V_{OUT}}$ | V <sub>OUT(S)</sub> + 1.0 V ≤ V <sub>IN</sub> ≤ 30 V, I <sub>OUT</sub> = 30 mA                                 | -                                     | 0.05                       | 0.3                 | %/V                        | 1            |   |
| Load regulation                      | ΔV <sub>OUT2</sub>                                    | V <sub>IN</sub> = 13.5 V, 2.0 V ≤ V <sub>OUT(S)</sub> < 5.1 V,<br>0.1 mA ≤ I <sub>OUT</sub> ≤ 40 mA            | -                                     | 20                         | 70                  | mV                         | 1            |   |
|                                      |   | V <sub>IN</sub> = 13.5 V, 5.1 V ≤ V <sub>OUT(S)</sub> < 12.1 V,<br>0.1 mA ≤ I <sub>OUT</sub> ≤ 40 mA           | -                                     | 20                         | 150                 | mV                         | 1            |   |
|                                      |   | V <sub>IN</sub> = 16.0 V, 12.1 V ≤ V <sub>OUT(S)</sub> ≤ 15.0 V,<br>0.1 mA ≤ I <sub>OUT</sub> ≤ 40 mA          | -                                     | 25                         | 215                 | mV                         | 1            |   |
| Current consumption during operation | I <sub>SS1</sub>                                      | V <sub>IN</sub> = 13.5 V,<br>ON / OFF pin = ON,<br>no load   | 2.0 V ≤ V <sub>OUT(S)</sub> < 12.5 V  | -                          | 4.0                 | 9.0                        | μA           | 2 |
|                                      |   | V <sub>IN</sub> = V <sub>OUT(S)</sub> + 1.0 V,<br>ON / OFF pin = ON,<br>no load                                | 12.5 V ≤ V <sub>OUT(S)</sub> ≤ 15.0 V | -                          | 4.0                 | 9.0                        | μA           | 2 |
| Current consumption during power-off | I <sub>SS2</sub>                                      | V <sub>IN</sub> = 13.5 V,<br>ON / OFF pin = OFF,<br>no load  | 2.0 V ≤ V <sub>OUT(S)</sub> < 12.5 V  | -                          | 0.1                 | 2.5                        | μA           | 2 |
|                                      |   | V <sub>IN</sub> = V <sub>OUT(S)</sub> + 1.0 V,<br>ON / OFF pin = OFF,<br>no load                               | 12.5 V ≤ V <sub>OUT(S)</sub> ≤ 15.0 V | -                          | 0.1                 | 2.5                        | μA           | 2 |
| Input voltage                        | V <sub>IN</sub>                                       | -  | 3.0                                   | -                          | 50                  | V                          | -            |   |

**Table 8 (2 / 2)**

( $T_j = -40^\circ\text{C}$  to  $+125^\circ\text{C}$ ,  $T_a = -40^\circ\text{C}$  to  $+105^\circ\text{C}$  unless otherwise specified)

| Item                                   | Symbol      | Condition   | Min.   | Typ. | Max. | Unit             | Test Circuit  |   |
|--|-------------|---|--|------|------|------------------|---------------|---|
| ON / OFF pin input voltage "H"         | $V_{SH}$    | $V_{IN} = 13.5\text{ V}$ ,<br>$R_L = 1.0\text{ k}\Omega$ , determined by $V_{OUT}$ output level   | $2.0\text{ V} \leq V_{OUT(S)} < 12.5\text{ V}$     | 1.5  | –    | –                | V             | 4 |
|  |             | $V_{IN} = V_{OUT(S)} + 1.0\text{ V}$ ,<br>$R_L = 1.0\text{ k}\Omega$ , determined by $V_{OUT}$ output level   | $12.5\text{ V} \leq V_{OUT(S)} \leq 15.0\text{ V}$ | 1.5  | –    | –                | V             | 4 |
| ON / OFF pin input voltage "L"         | $V_{SL}$    | $V_{IN} = 13.5\text{ V}$ ,<br>$R_L = 1.0\text{ k}\Omega$ , determined by $V_{OUT}$ output level   | $2.0\text{ V} \leq V_{OUT(S)} < 12.5\text{ V}$     | –    | –    | 0.3              | V             | 4 |
|  |             | $V_{IN} = V_{OUT(S)} + 1.0\text{ V}$ ,<br>$R_L = 1.0\text{ k}\Omega$ , determined by $V_{OUT}$ output level   | $12.5\text{ V} \leq V_{OUT(S)} \leq 15.0\text{ V}$ | –    | –    | 0.3              | V             | 4 |
| ON / OFF pin input current "H"         | $I_{SH}$    | $V_{IN} = 13.5\text{ V}$ ,<br>$V_{ON/OFF} = 13.5\text{ V}$  | $2.0\text{ V} \leq V_{OUT(S)} < 12.5\text{ V}$     | –0.1 | –    | 0.1              | $\mu\text{A}$ | 4 |
|  |             | $V_{IN} = V_{OUT(S)} + 1.0\text{ V}$ ,<br>$V_{ON/OFF} = 13.5\text{ V}$  | $12.5\text{ V} \leq V_{OUT(S)} \leq 15.0\text{ V}$ | –0.1 | –    | 0.1              | $\mu\text{A}$ | 4 |
| ON / OFF pin input current "L"         | $I_{SL}$    | $V_{IN} = 13.5\text{ V}$ ,<br>$V_{ON/OFF} = 0\text{ V}$   | $2.0\text{ V} \leq V_{OUT(S)} < 12.5\text{ V}$     | –0.1 | –    | 0.1              | $\mu\text{A}$ | 4 |
|  |             | $V_{IN} = V_{OUT(S)} + 1.0\text{ V}$ ,<br>$V_{ON/OFF} = 0\text{ V}$   | $12.5\text{ V} \leq V_{OUT(S)} \leq 15.0\text{ V}$ | –0.1 | –    | 0.1              | $\mu\text{A}$ | 4 |
| Ripple rejection                       | RR          | $V_{IN} = 13.5\text{ V}$ ,<br>$f = 100\text{ Hz}$ ,<br>$\Delta V_{rip} = 0.5\text{ V}_{rms}$ ,<br>$I_{OUT} = 30\text{ mA}$ ,<br>$T_a = +25^\circ\text{C}$             | $2.0\text{ V} \leq V_{OUT(S)} < 2.3\text{ V}$      | –    | 50   | –                | dB            | 5 |
|  |             |   | $2.3\text{ V} \leq V_{OUT(S)} < 3.6\text{ V}$      | –    | 45   | –                | dB            | 5 |
|  |             |   | $3.6\text{ V} \leq V_{OUT(S)} < 6.1\text{ V}$      | –    | 40   | –                | dB            | 5 |
|  |             |   | $6.1\text{ V} \leq V_{OUT(S)} < 10.1\text{ V}$     | –    | 35   | –                | dB            | 5 |
|  |             |   | $10.1\text{ V} \leq V_{OUT(S)} < 12.5\text{ V}$    | –    | 30   | –                | dB            | 5 |
|  |             | $V_{IN} = V_{OUT(S)} + 1.0\text{ V}$ ,<br>$f = 100\text{ Hz}$ ,<br>$\Delta V_{rip} = 0.5\text{ V}_{rms}$ ,<br>$I_{OUT} = 30\text{ mA}$ ,<br>$T_a = +25^\circ\text{C}$ | $12.5\text{ V} \leq V_{OUT(S)} \leq 15.0\text{ V}$ | –    | 30   | –                | dB            | 5 |
| Short-circuit current                  | $I_{short}$ | $V_{IN} = 13.5\text{ V}$ ,<br>ON / OFF pin = ON,<br>$V_{OUT} = 0\text{ V}$ , $T_a = +25^\circ\text{C}$  | $2.0\text{ V} \leq V_{OUT(S)} < 12.5\text{ V}$     | –    | 80   | –                | mA            | 3 |
|  |             | $V_{IN} = V_{OUT(S)} + 1.0\text{ V}$ ,<br>ON / OFF pin = ON,<br>$V_{OUT} = 0\text{ V}$ , $T_a = +25^\circ\text{C}$  | $12.5\text{ V} \leq V_{OUT(S)} \leq 15.0\text{ V}$ | –    | 80   | –                | mA            | 3 |
| Thermal shutdown detection temperature | $T_{SD}$    | Junction temperature  | –  | 150  | –    | $^\circ\text{C}$ | –             |   |
| Thermal shutdown release temperature   | $T_{SR}$    | Junction temperature  | –  | 125  | –    | $^\circ\text{C}$ | –             |   |

- \*1.  $V_{OUT(S)}$ : Set output voltage  
 $V_{OUT(E)}$ : Actual output voltage  
 The output voltage when fixing  $I_{OUT}$  (= 30 mA) and inputting 13.5 V or  $V_{OUT(S)} + 1.0\text{ V}$ .
- \*2. The output current at which the output voltage becomes 95% of  $V_{OUT(E)}$  after gradually increasing the output current.
- \*3.  $V_{drop} = V_{IN1} - (V_{OUT3} \times 0.98)$   
 $V_{OUT3}$  is the output voltage when  $V_{IN} = V_{OUT(S)} + 2.0\text{ V}$ , and  $I_{OUT} = 100\text{ mA}$  or  $200\text{ mA}$ .  
 $V_{IN1}$  is the input voltage at which the output voltage becomes 98% of  $V_{OUT3}$  after gradually decreasing the input voltage.
- \*4. The output current can be at least this value.  
 Due to limitation of the power dissipation, this value may not be satisfied. Attention should be paid to the power dissipation when the output current is large.  
 This specification is guaranteed by design.



■ Test Circuits

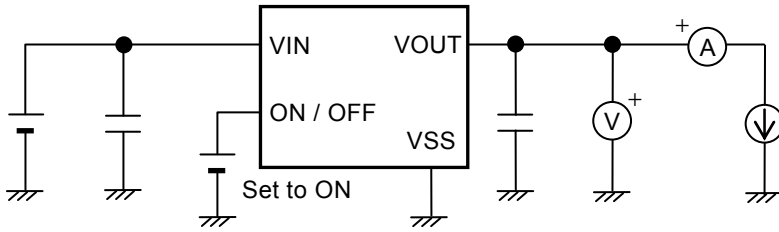


Figure 4 Test Circuit 1

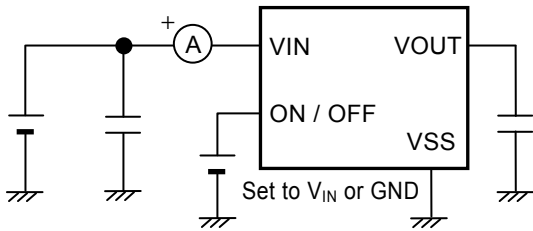


Figure 5 Test Circuit 2

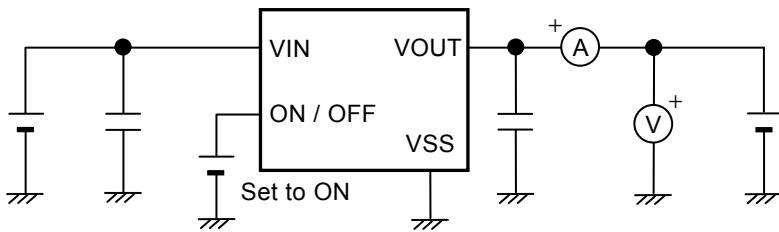


Figure 6 Test Circuit 3

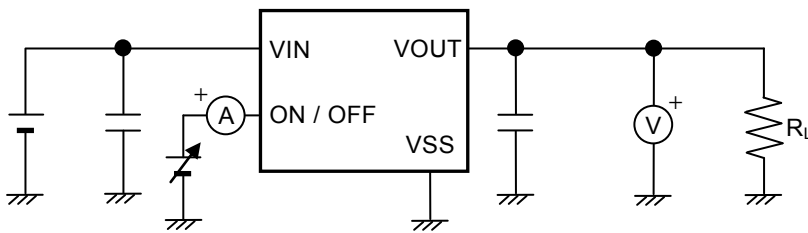


Figure 7 Test Circuit 4

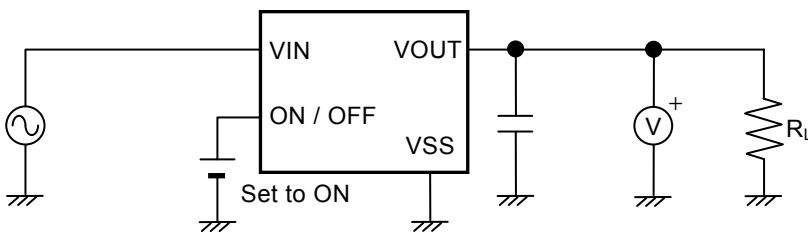
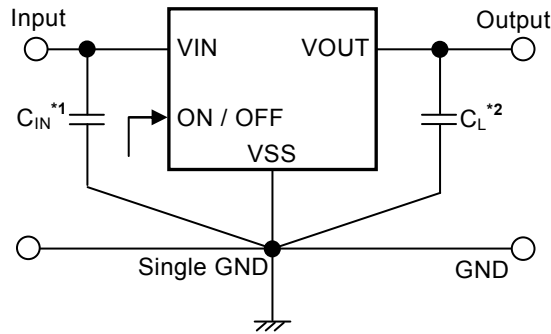


Figure 8 Test Circuit 5

■ **Standard Circuit**



\*1.  $C_{IN}$  is a capacitor for stabilizing the input.

\*2. A ceramic capacitor of 0.1  $\mu\text{F}$  or more can be used as  $C_L$ .

Figure 9

**Caution** The above connection diagram and constants will not guarantee successful operation. Perform thorough evaluation using an actual application to set the constants.

■ **Condition of Application**

Input capacitor ( $C_{IN}$ ): 0.1  $\mu\text{F}$  or more

Output capacitor ( $C_L$ ): 0.1  $\mu\text{F}$  or more

**Caution** Generally a series regulator may cause oscillation, depending on the selection of external parts. Confirm that no oscillation occurs in the application for which the above capacitors are used.

■ **Selection of Input and Output Capacitors ( $C_{IN}$ ,  $C_L$ )**

The S-19200A/BxxH Series requires an output capacitor between the VOUT pin and the VSS pin for phase compensation. Operation is stabilized by a ceramic capacitor with an output capacitance of 0.1  $\mu\text{F}$  or more over the entire temperature range. When using an OS capacitor, a tantalum capacitor, or an aluminum electrolytic capacitor, the capacitance must be 0.1  $\mu\text{F}$  or more.

The values of output overshoot and undershoot, which are transient response characteristics, vary depending on the value of the output capacitor.

The required value of capacitance for the input capacitor differs depending on the application.

Set the value for input capacitor ( $C_{IN}$ ) and output capacitor ( $C_L$ ) as follows.

$$C_{IN} \geq 0.1 \mu\text{F}$$

$$C_L \geq 0.1 \mu\text{F}$$

**Caution** Define the capacity values of  $C_{IN}$  and  $C_L$  by sufficient evaluation including the temperature characteristics under the actual usage conditions.

## ■ Explanation of Terms

### 1. Low dropout voltage regulator

This voltage regulator has the low dropout voltage due to its built-in low on-resistance transistor.

### 2. Output voltage ( $V_{OUT}$ )

The accuracy of the output voltage is ensured at  $\pm 3.0\%$  under specified conditions of fixed input voltage<sup>\*1</sup>, fixed output current, and fixed temperature.

\*1. Differs depending on the product.

**Caution** If the above conditions change, the output voltage value may vary and exceed the accuracy range of the output voltage. Refer to "■ Electrical Characteristics" and "■ Characteristics (Typical Data)" for details.

### 3. Line regulation $\left( \frac{\Delta V_{OUT1}}{\Delta V_{IN} \cdot V_{OUT}} \right)$

Indicates the dependency of the output voltage against the input voltage. That is, the value shows how much the output voltage changes due to a change in the input voltage after fixing output current constant.

### 4. Load regulation ( $\Delta V_{OUT2}$ )

Indicates the dependency of the output voltage against the output current. That is, the value shows how much the output voltage changes due to a change in the output current after fixing input voltage constant.

### 5. Dropout voltage ( $V_{drop}$ )

Indicates the difference between input voltage ( $V_{IN1}$ ) and the output voltage when; decreasing input voltage ( $V_{IN}$ ) gradually until the output voltage has dropped out to the value of 98% of output voltage ( $V_{OUT3}$ ), which is at  $V_{IN} = V_{OUT(S)} + 2.0 \text{ V}$ .

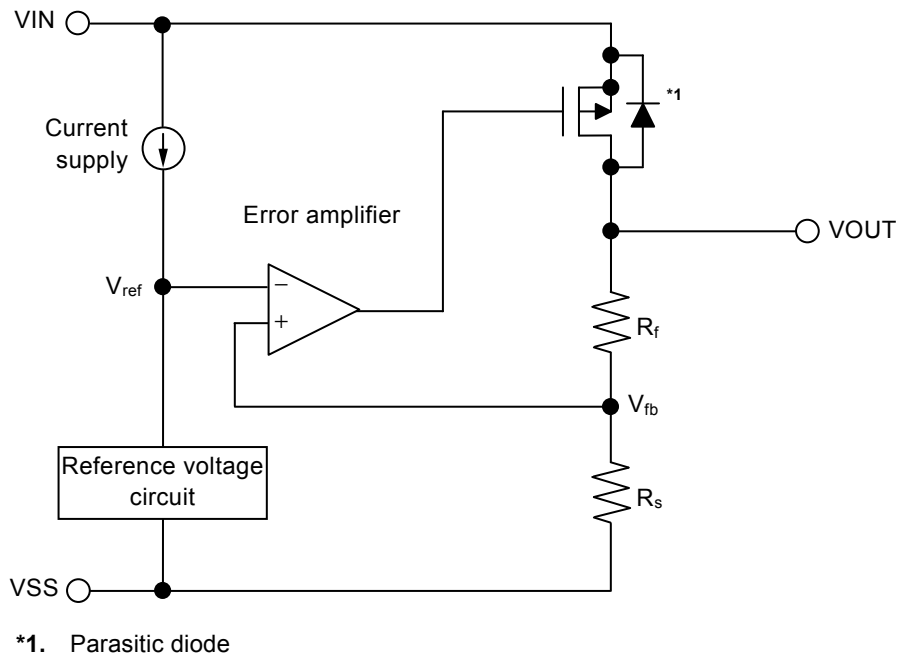
$$V_{drop} = V_{IN1} - (V_{OUT3} \times 0.98)$$

■ **Operation**

**1. Basic operation**

**Figure 10** shows the block diagram of the S-19200A/BxxH Series.

The error amplifier compares the reference voltage ( $V_{ref}$ ) with feedback voltage ( $V_{fb}$ ), which is the output voltage resistance-divided by feedback resistors ( $R_s$  and  $R_f$ ). It supplies the gate voltage necessary to maintain the constant output voltage which is not influenced by the input voltage and temperature change, to the output transistor.



**Figure 10**

**2. Output transistor**

In the S-19200A/BxxH Series, a low on-resistance P-channel MOS FET is used as the output transistor.

Be sure that  $V_{OUT}$  does not exceed  $V_{IN} + 0.3$  V to prevent the voltage regulator from being damaged due to reverse current flowing from the VOUT pin through a parasitic diode to the VIN pin, when the potential of  $V_{OUT}$  became higher than  $V_{IN}$ .

### 3. ON / OFF pin

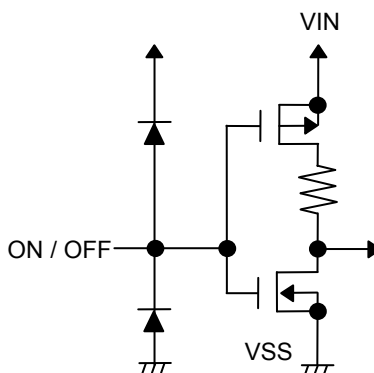
This pin starts and stops the regulator.

When the ON / OFF pin is set to OFF level, the entire internal circuit stops operating, and the built-in P-channel MOS FET output transistor between the VIN pin and the VOUT pin is turned off, reducing current consumption significantly. The VOUT pin is set to the V<sub>SS</sub> level by the internal dividing resistor of several MΩ between the VOUT pin and the VSS pin.

Note that the current consumption increases when a voltage of 0.3 V to V<sub>IN</sub> - 0.3 V is applied to the ON / OFF pin. The ON / OFF pin is configured as shown in **Figure 11**. Since the ON / OFF pin is neither pulled down nor pulled up internally, do not use it in the floating status. When not using the ON / OFF pin, connect it to the VSS pin in the product A type, and connect it to the VIN pin in the B type.

**Table 9**

| Product Type | ON / OFF Pin | Internal Circuit | VOUT Pin Voltage      | Current Consumption |
|--------------|--------------|------------------|-----------------------|---------------------|
| A            | "L": ON      | Operate          | Set value             | I <sub>SS1</sub>    |
| A            | "H": OFF     | Stop             | V <sub>SS</sub> level | I <sub>SS2</sub>    |
| B            | "L": OFF     | Stop             | V <sub>SS</sub> level | I <sub>SS2</sub>    |
| B            | "H": ON      | Operate          | Set value             | I <sub>SS1</sub>    |



**Figure 11**

### 4. Overcurrent protection circuit

The S-19200A/BxxH Series includes an overcurrent protection circuit having the characteristics shown in "1. Output voltage vs. Output current (When load current increases) (Ta = +25°C)" in "■ Characteristics (Typical Data)", in order to protect the output transistor against an excessive output current and short circuiting between the VOUT pin and the VSS pin. The current when the output pin is short-circuited (I<sub>short</sub>) is internally set at approx. 80 mA typ., and the normal value is restored for the output voltage, if releasing a short circuit once.

**Caution** This overcurrent protection circuit does not work as for thermal protection. If this IC long keeps short circuiting inside, pay attention to the conditions of input voltage and load current so that, under the usage conditions including short circuit, the loss of the IC will not exceed the power dissipation.

## 5. Thermal shutdown circuit

The S-19200A/BxxH Series has a thermal shutdown circuit to protect the device from damage due to overheat. When the junction temperature rises to 150°C typ., the thermal shutdown circuit operates to stop regulating. When the junction temperature drops to 125°C typ., the thermal shutdown circuit is released to restart regulating. Due to self-heating of the S-19200A/BxxH Series, if the thermal shutdown circuit starts operating, it stops regulating so that the output voltage drops. When regulation stops, the S-19200A/BxxH Series does not itself generate heat and the IC's temperature drops. When the temperature drops, the thermal shutdown circuit is released to restart regulating, thus this IC generates heat again. Repeating this procedure makes the waveform of the output voltage into a pulse-like form. Stop or restart of regulation continues unless decreasing either or both of the input voltage and the output current in order to reduce the internal power consumption, or decreasing the ambient temperature.

**Table 10**

| Thermal Shutdown Circuit | VOUT Pin Voltage      |
|--------------------------|-----------------------|
| Operate: 150°C typ.*1    | V <sub>SS</sub> level |
| Release: 125°C typ.*1    | Set value             |

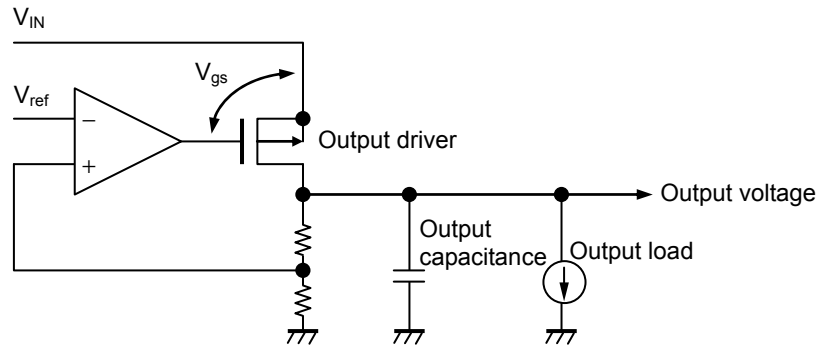
\*1. Junction temperature

**6. Overshoot of output voltage**

Overshoot of output voltage occurs depending on the condition such as the rising speed of input voltage ( $V_{IN}$ ). Overshoot voltage is the difference between the maximum value of output voltage generated by the fluctuation of  $V_{IN}$  and the actual output voltage ( $V_{OUT(E)}$ ) value.

**6.1 At normal operation**

As shown in **Figure 12**,  $V_{gs}$  is the voltage difference between  $V_{IN}$  and gate voltage of output driver. The error amplifier controls  $V_{gs}$  in order to keep the output voltage constant depending on the fluctuation of  $V_{IN}$  and the output load.



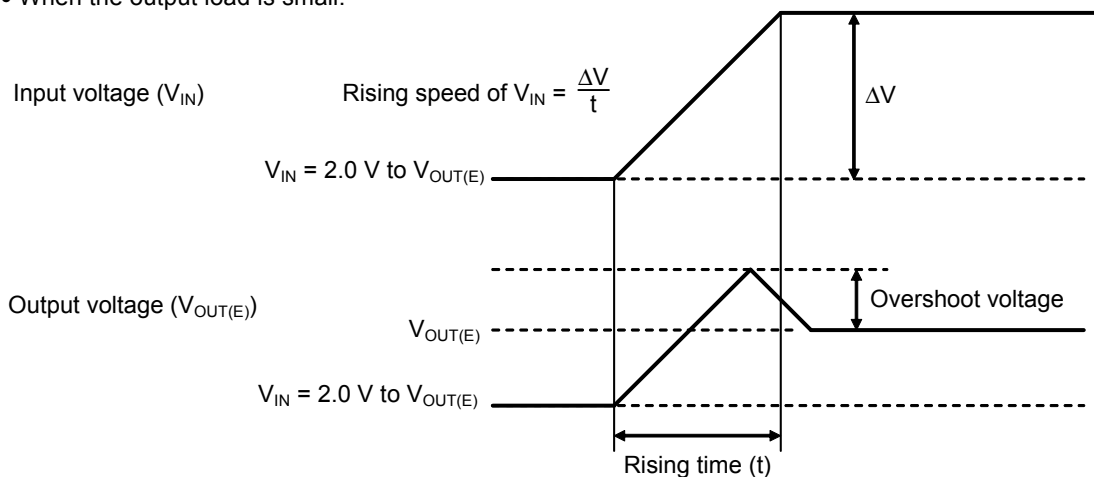
**Figure 12 Circuit Diagram**

**6.2 Occurrence of overshoot**

If  $V_{IN}$  voltage rises at a fast speed,  $V_{gs}$  may become large when gate voltage of output driver can not follow the speed of  $V_{IN}$ . When  $V_{gs}$  becomes large, the current supplied from output driver is increased transiently. Thereby, output voltage rises, and then overshoot occurs.

Note that overshoot voltage is greatly affected by the following use conditions or temperature, etc.

- When  $V_{IN}$  rises in the range of 2.0 V to  $V_{OUT(E)}$ .
- When the rising speed of  $V_{IN}$  is fast.
- When the output capacitance is small.
- When the output load is small.



**Figure 13  $V_{IN}$  and Overshoot Voltage**

**Caution** Under the following conditions, overshoot voltage tends to become larger especially.

- When  $V_{IN}$  rises from around 98% of  $V_{OUT(E)}$ .
- When the rising speed of  $V_{IN}$  is 200 mV/ $\mu$ s or more.

## ■ Precautions

- Wiring patterns for the VIN pin, the VOUT pin and GND should be designed so that the impedance is low. When mounting an output capacitor between the VOUT pin and the VSS pin ( $C_L$ ) and a capacitor for stabilizing the input between the VIN pin and the VSS pin ( $C_{IN}$ ), the distance from the capacitors to these pins should be as short as possible.
- Note that generally the output voltage may increase when a series regulator is used at low load current (0.1 mA or less).
- Note that generally the output voltage may increase due to the leakage current from an output driver when a series regulator is used at high temperature.
- Note that the output voltage may increase due to the leakage current from an output driver even if the ON / OFF pin is at OFF level when a series regulator is used at high temperature.
- Generally a series regulator may cause oscillation, depending on the selection of external parts. The following conditions are recommended for the S-19200A/BxxH Series. However, be sure to perform sufficient evaluation under the actual usage conditions for selection, including evaluation of temperature characteristics. Refer to "6. Example of equivalent series resistance vs. Output current characteristics ( $T_a = +25^\circ\text{C}$ )" in "■ Reference Data" for the equivalent series resistance ( $R_{ESR}$ ) of the output capacitor.

Input capacitor ( $C_{IN}$ ): 0.1  $\mu\text{F}$  or more

Output capacitor ( $C_L$ ): 0.1  $\mu\text{F}$  or more

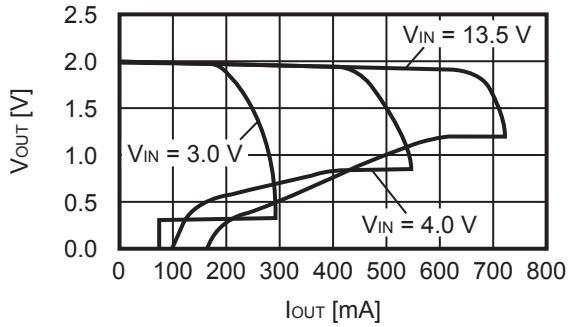
- The voltage regulator may oscillate when the impedance of the power supply is high and the input capacitance is small or an input capacitor is not connected.
- Sufficiently evaluate the output voltage fluctuations caused by the power supply or the load fluctuations with the actual device.
- Overshoot may occur in the output voltage momentarily if the voltage is rapidly raised at power-on or when the power supply fluctuates. Sufficiently evaluate the output voltage at power-on with the actual device.
- The application conditions for the input voltage, the output voltage, and the load current should not exceed the power dissipation.
- Do not apply an electrostatic discharge to this IC that exceeds the performance ratings of the built-in electrostatic protection circuit.
- In determining the output current, attention should be paid to the output current value specified in **Table 8** in "■ Electrical Characteristics" and footnote \*4 of the table.
- ABLIC Inc. claims no responsibility for any disputes arising out of or in connection with any infringement by products including this IC of patents owned by a third party.



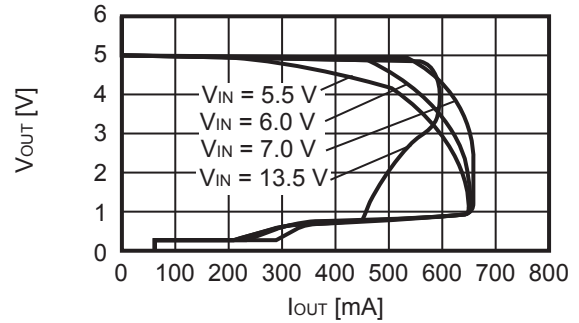
**■ Characteristics (Typical Data)**

**1. Output voltage vs. Output current (When load current increases) (Ta = +25°C)**

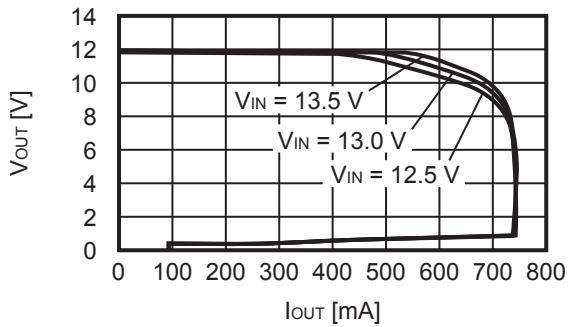
**1.1 V<sub>OUT</sub> = 2.0 V**



**1.2 V<sub>OUT</sub> = 5.0 V**



**1.3 V<sub>OUT</sub> = 12.0 V**

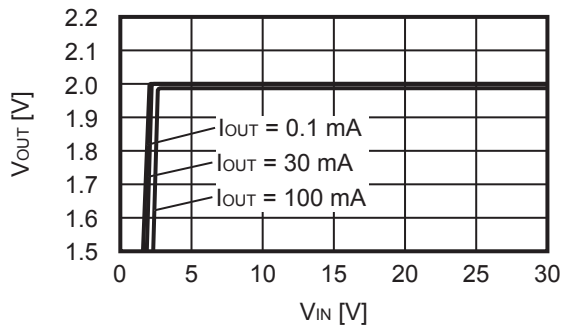


**Remark** In determining the output current, attention should be paid to the following.

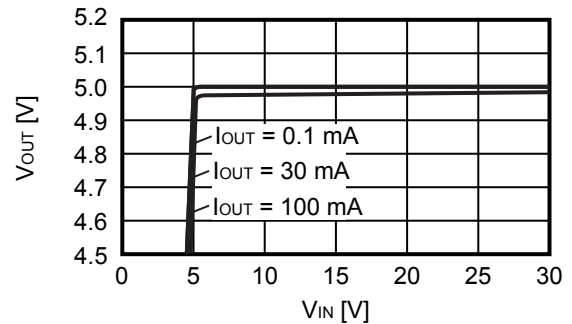
1. The minimum output current value and footnote \*4 of Table 8 in "■ Electrical Characteristics"
2. Power dissipation

**2. Output voltage vs. Input voltage (Ta = +25°C)**

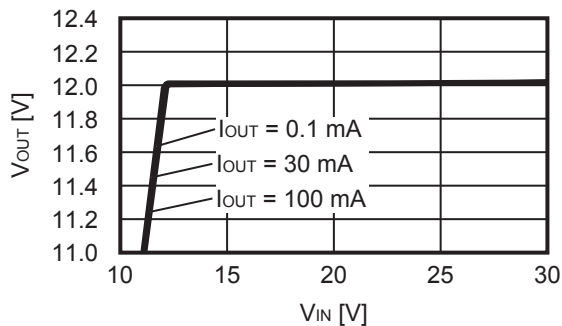
**2.1 V<sub>OUT</sub> = 2.0 V**



**2.2 V<sub>OUT</sub> = 5.0 V**

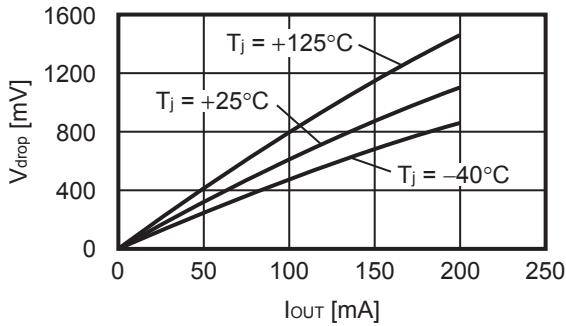


**2.3 V<sub>OUT</sub> = 12.0 V**

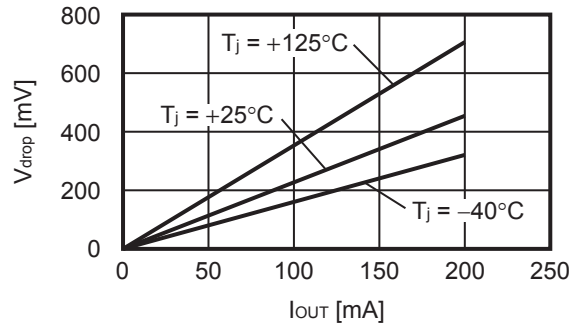


**3. Dropout voltage vs. Output current**

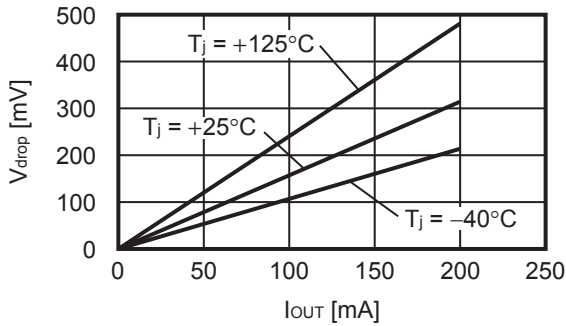
**3.1  $V_{OUT} = 2.0\text{ V}$**



**3.2  $V_{OUT} = 5.0\text{ V}$**

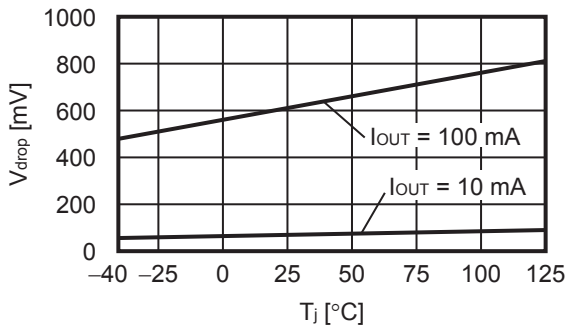


**3.3  $V_{OUT} = 12.0\text{ V}$**

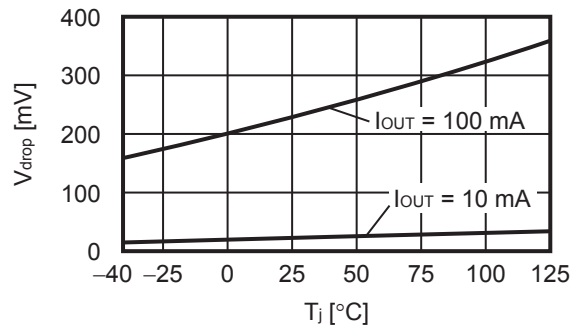


**4. Dropout voltage vs. Temperature**

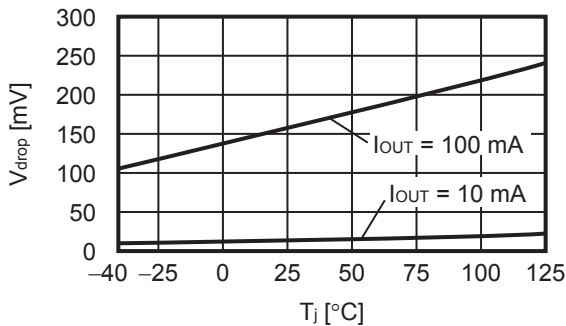
**4.1  $V_{OUT} = 2.0\text{ V}$**



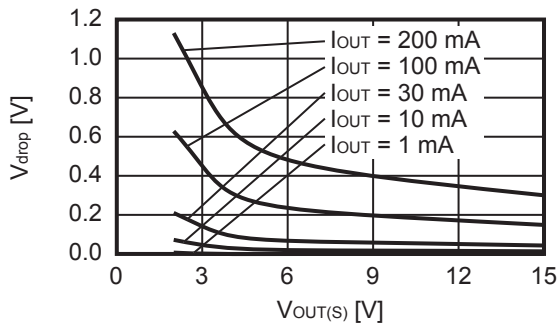
**4.2  $V_{OUT} = 5.0\text{ V}$**



**4.3  $V_{OUT} = 12.0\text{ V}$**

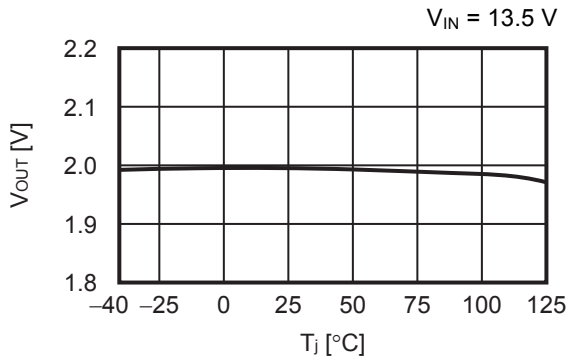


**5. Dropout voltage vs. Set output voltage ( $T_j = +25^\circ\text{C}$ )**

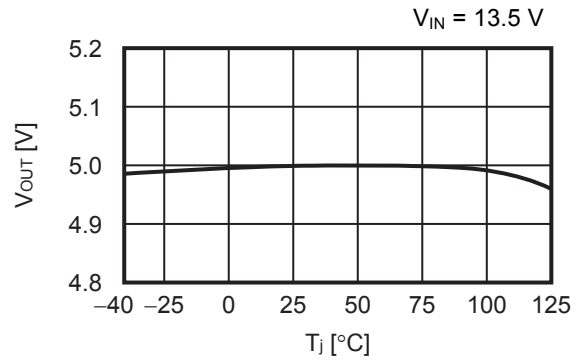


**6. Output voltage vs. Temperature**

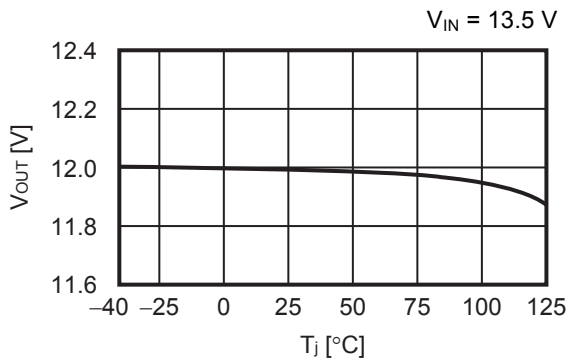
**6.1  $V_{\text{OUT}} = 2.0 \text{ V}$**



**6.2  $V_{\text{OUT}} = 5.0 \text{ V}$**

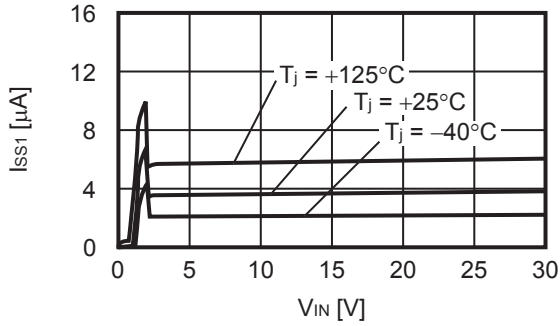


**6.3  $V_{\text{OUT}} = 12.0 \text{ V}$**

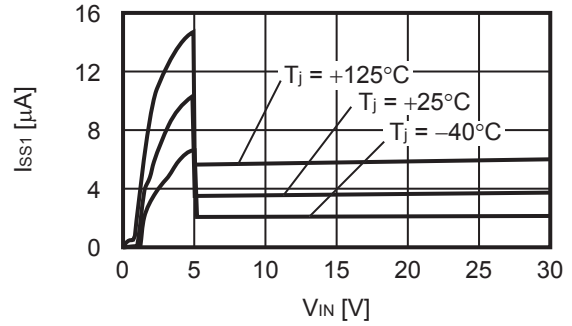


**7. Current consumption during operation vs. Input voltage (When ON / OFF pin is ON, no load)**

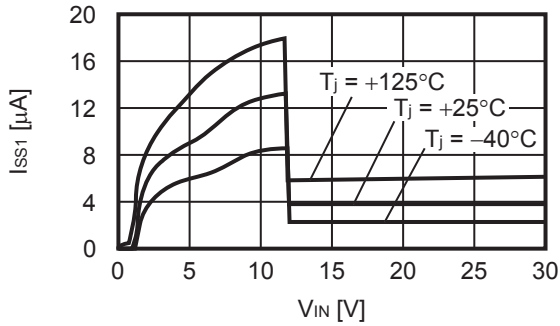
**7.1  $V_{OUT} = 2.0\text{ V}$**



**7.2  $V_{OUT} = 5.0\text{ V}$**

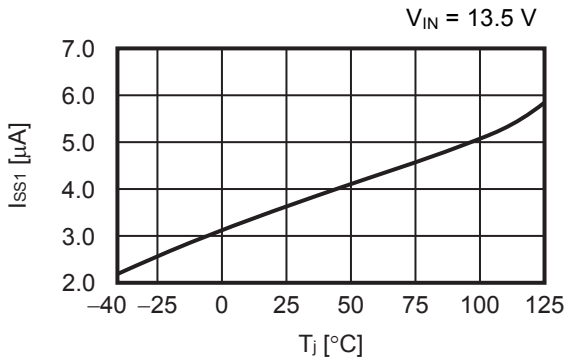


**7.3  $V_{OUT} = 12.0\text{ V}$**

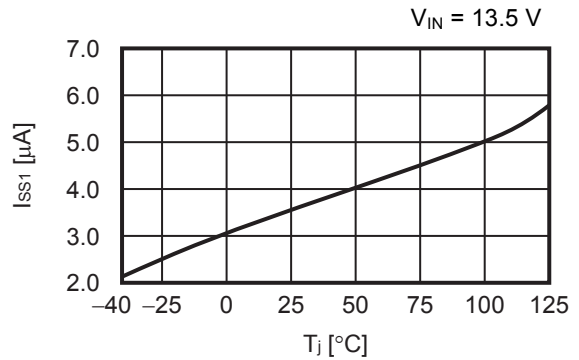


**8. Current consumption during operation vs. Temperature**

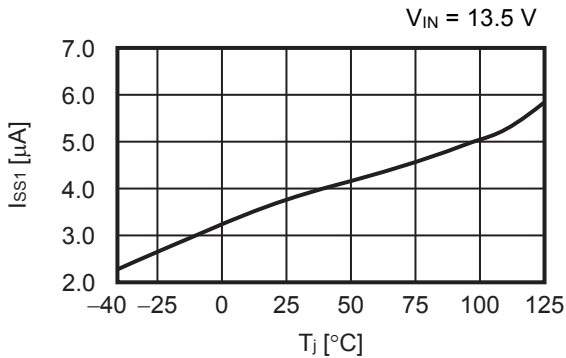
**8.1  $V_{OUT} = 2.0\text{ V}$**



**8.2  $V_{OUT} = 5.0\text{ V}$**

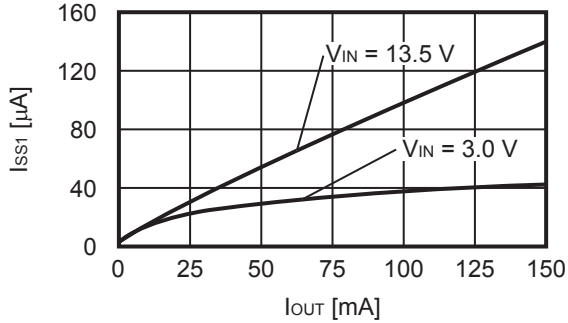


**8.3  $V_{OUT} = 12.0\text{ V}$**

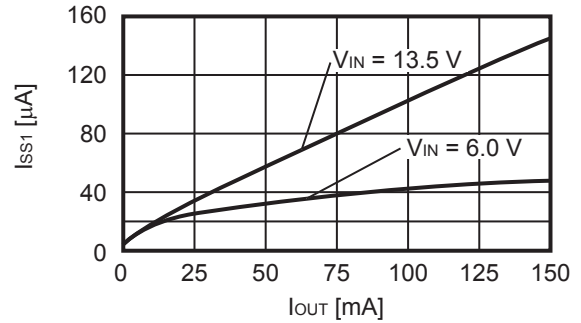


**9. Current consumption during operation vs. Output current (Ta = +25°C)**

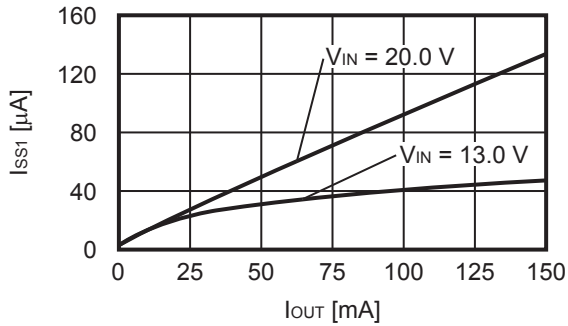
**9.1 V<sub>OUT</sub> = 2.0 V**



**9.2 V<sub>OUT</sub> = 5.0 V**

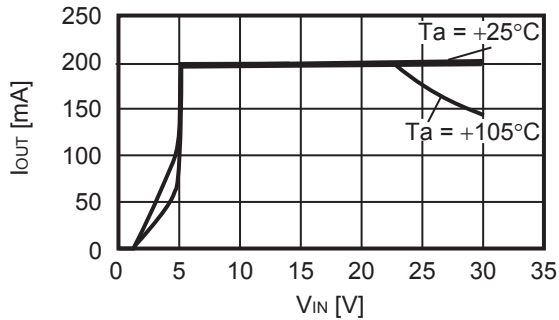


**9.3 V<sub>OUT</sub> = 12.0 V**



**10. Output current vs. Input voltage<sup>\*1</sup>**

**10.1 V<sub>OUT</sub> = 5.0 V**



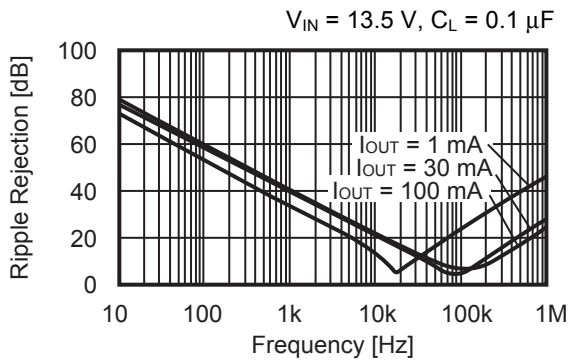
\*1. When mounted on board

[Mounted board]

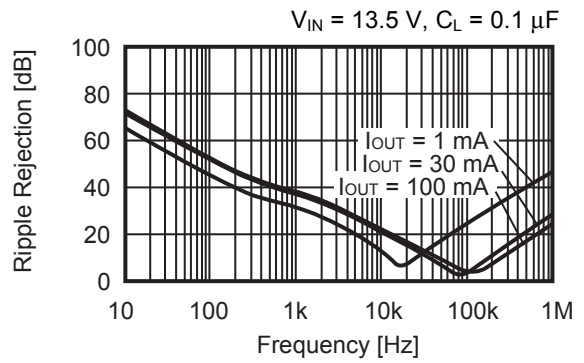
- (1) Board size: 50 mm × 50 mm × t1.6 mm
- (2) Board material: Glass epoxy resin (two layers)
- (3) Wiring ratio: Surface approx. 95%, reverse side approx. 99%
- (4) Through hole: Diameter 0.6 mm × 82

**11. Ripple rejection ( $T_a = +25^\circ\text{C}$ )**

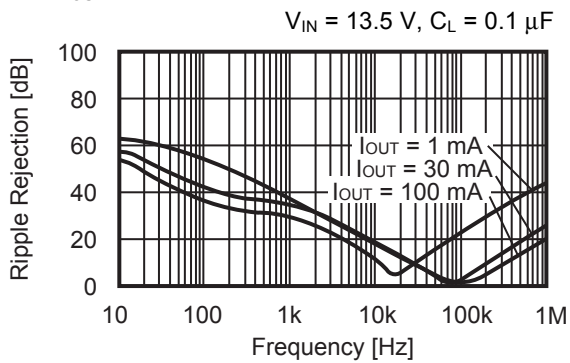
**11.1  $V_{OUT} = 2.0\text{ V}$**



**11.2  $V_{OUT} = 5.0\text{ V}$**



**11.3  $V_{OUT} = 12.0\text{ V}$**

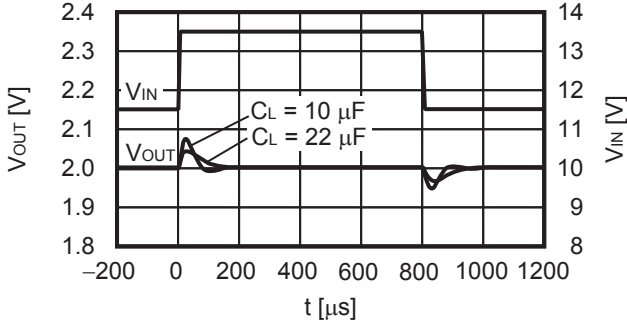


**■ Reference Data**

**1. Characteristics of input transient response (Ta = +25°C)**

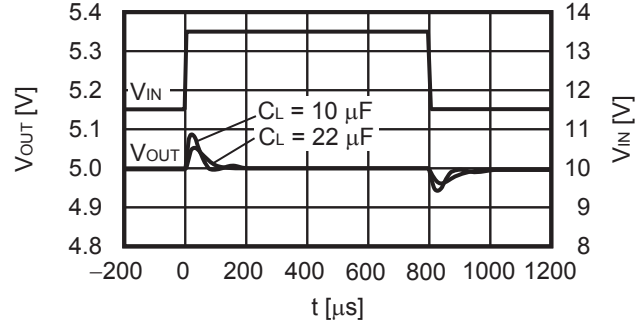
**1.1 V<sub>OUT</sub> = 2.0 V**

I<sub>OUT</sub> = 30 mA, C<sub>IN</sub> = 0.1 μF, V<sub>IN</sub> = 11.5 V ↔ 13.5 V, t<sub>r</sub> = t<sub>f</sub> = 5.0 μs



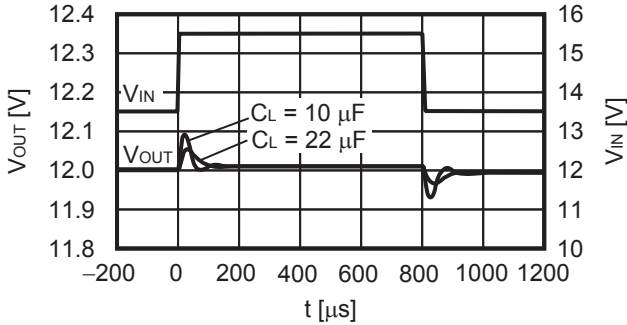
**1.2 V<sub>OUT</sub> = 5.0 V**

I<sub>OUT</sub> = 30 mA, C<sub>IN</sub> = 0.1 μF, V<sub>IN</sub> = 11.5 V ↔ 13.5 V, t<sub>r</sub> = t<sub>f</sub> = 5.0 μs



**1.3 V<sub>OUT</sub> = 12.0 V**

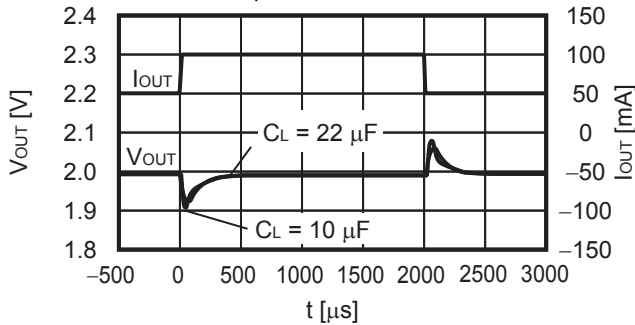
I<sub>OUT</sub> = 30 mA, C<sub>IN</sub> = 0.1 μF, V<sub>IN</sub> = 13.5 V ↔ 15.5 V, t<sub>r</sub> = t<sub>f</sub> = 5.0 μs



**2. Characteristics of load transient response (Ta = +25°C)**

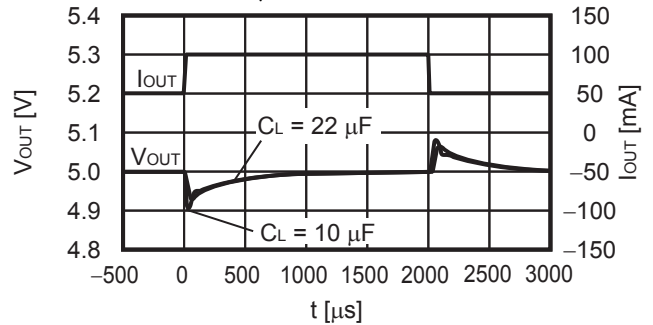
**2.1 V<sub>OUT</sub> = 2.0 V**

V<sub>IN</sub> = 13.5 V, C<sub>IN</sub> = 0.1 μF, I<sub>OUT</sub> = 50 mA ↔ 100 mA



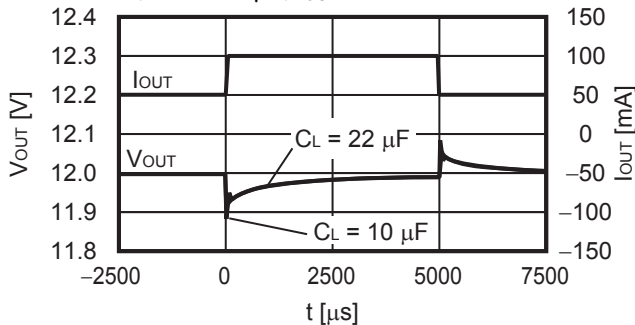
**2.2 V<sub>OUT</sub> = 5.0 V**

V<sub>IN</sub> = 13.5 V, C<sub>IN</sub> = 0.1 μF, I<sub>OUT</sub> = 50 mA ↔ 100 mA



**2.3 V<sub>OUT</sub> = 12.0 V**

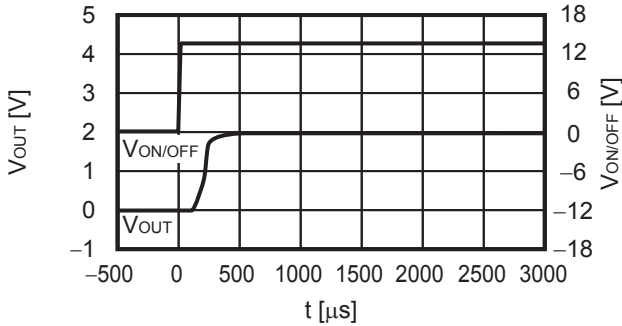
V<sub>IN</sub> = 13.5 V, C<sub>IN</sub> = 0.1 μF, I<sub>OUT</sub> = 50 mA ↔ 100 mA



**3. Transient response characteristics of ON / OFF pin ( $T_a = +25^\circ\text{C}$ )**

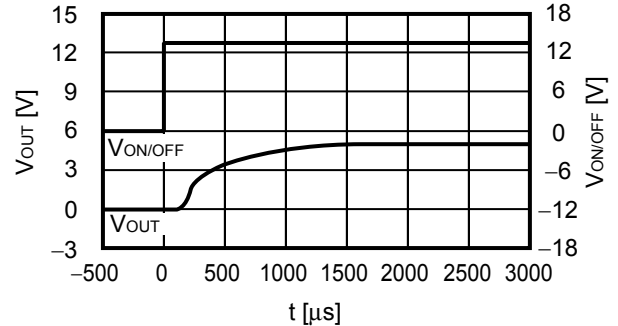
**3.1  $V_{\text{OUT}} = 2.0 \text{ V}$**

$V_{\text{IN}} = 13.5 \text{ V}$ ,  $C_L = 10 \mu\text{F}$ ,  $C_{\text{IN}} = 0.1 \mu\text{F}$ ,  
 $I_{\text{OUT}} = 100 \text{ mA}$ ,  $V_{\text{ON/OFF}} = 0 \text{ V} \rightarrow 13.5 \text{ V}$



**3.2  $V_{\text{OUT}} = 5.0 \text{ V}$**

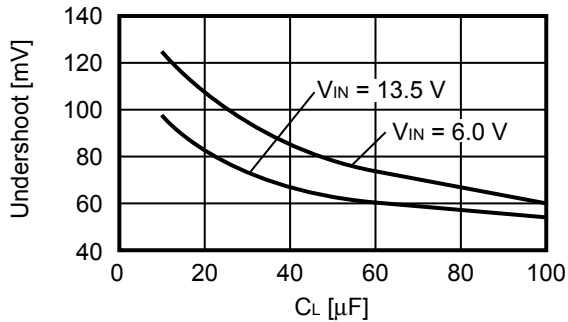
$V_{\text{IN}} = 13.5 \text{ V}$ ,  $C_L = 10 \mu\text{F}$ ,  $C_{\text{IN}} = 0.1 \mu\text{F}$ ,  
 $I_{\text{OUT}} = 100 \text{ mA}$ ,  $V_{\text{ON/OFF}} = 0 \text{ V} \rightarrow 13.5 \text{ V}$



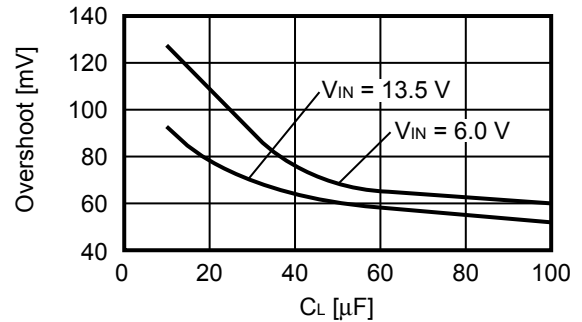
**4. Load transient response characteristics dependent on capacitance ( $T_a = +25^\circ\text{C}$ )**

**4.1  $V_{\text{OUT}} = 5.0 \text{ V}$**

$C_{\text{IN}} = 0.1 \mu\text{F}$ ,  $I_{\text{OUT}} = 50 \text{ mA} \rightarrow 100 \text{ mA}$



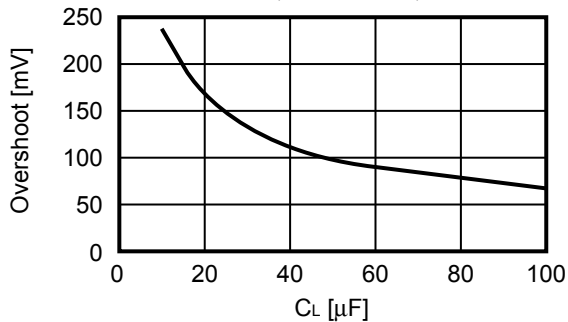
$C_{\text{IN}} = 0.1 \mu\text{F}$ ,  $I_{\text{OUT}} = 100 \text{ mA} \rightarrow 50 \text{ mA}$



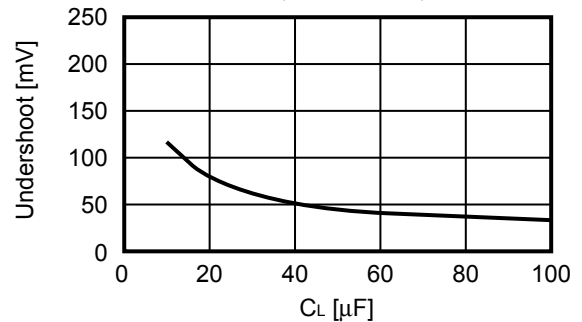
**5. Input transient response characteristics dependent on capacitance ( $T_a = +25^\circ\text{C}$ )**

**5.1  $V_{\text{OUT}} = 5.0 \text{ V}$**

$V_{\text{IN}} = 7.0 \text{ V} \rightarrow 12.0 \text{ V}$ ,  $t_r = 5.0 \mu\text{s}$ ,  $C_{\text{IN}} = 0.1 \mu\text{F}$ ,  $I_{\text{OUT}} = 30 \text{ mA}$

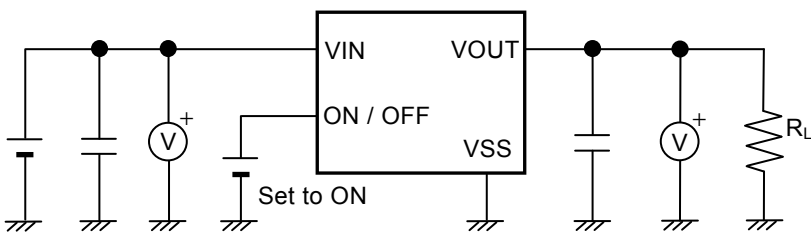
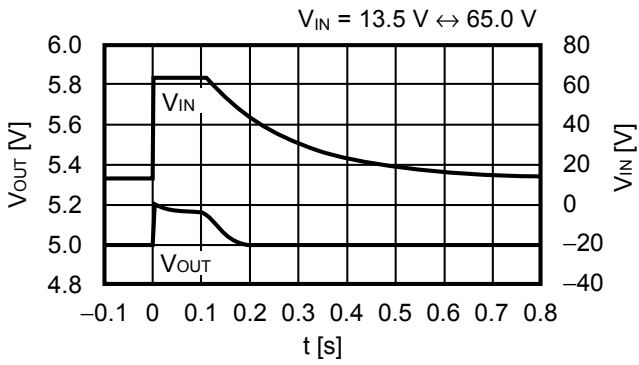


$V_{\text{IN}} = 12.0 \text{ V} \rightarrow 7.0 \text{ V}$ ,  $t_r = 5.0 \mu\text{s}$ ,  $C_{\text{IN}} = 0.1 \mu\text{F}$ ,  $I_{\text{OUT}} = 30 \text{ mA}$



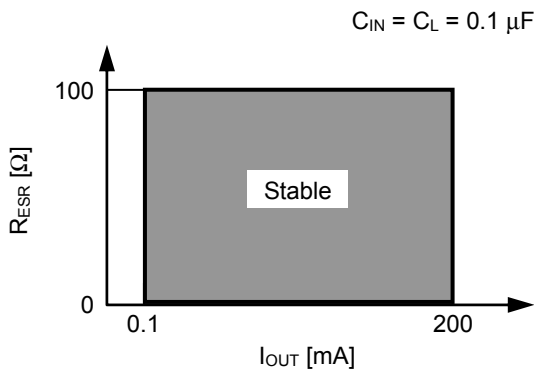


**6. Load dump characteristics (Ta = +25°C)**

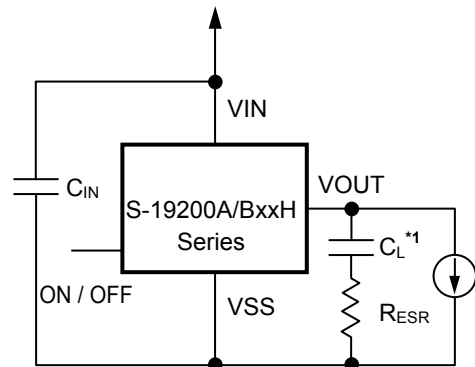


**Figure 14 Test Circuit of Load Dump Characteristics**

**7. Example of equivalent series resistance vs. Output current characteristics (Ta = +25°C)**



**Figure 15**

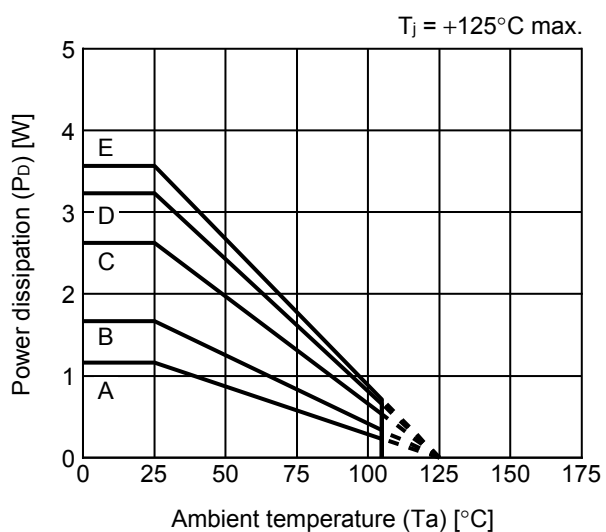


\*1. C<sub>L</sub>: TDK Corporation CGA5H2X8R2A104K (0.1 μF)

**Figure 16**

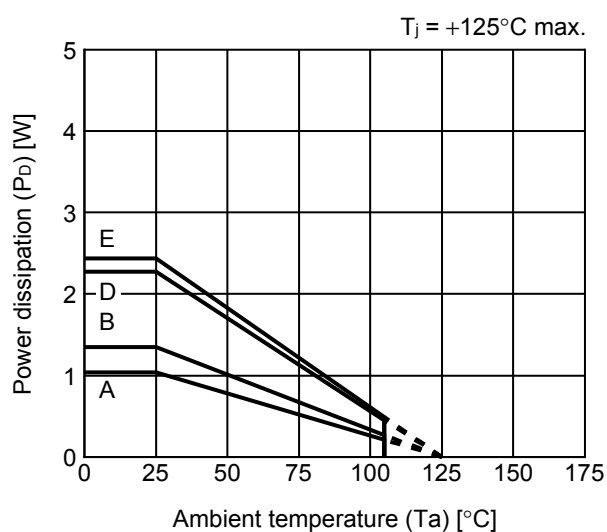
■ **Power Dissipation**

1. **TO-252-5S(A)**



| Board | Power Dissipation ( $P_D$ ) |
|-------|-----------------------------|
| A     | 1.16 W                      |
| B     | 1.67 W                      |
| C     | 2.63 W                      |
| D     | 3.23 W                      |
| E     | 3.57 W                      |

2. **HSOP-6**

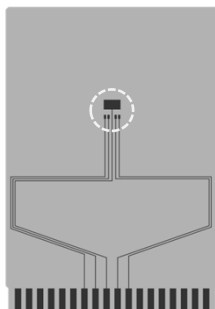


| Board | Power Dissipation ( $P_D$ ) |
|-------|-----------------------------|
| A     | 1.04 W                      |
| B     | 1.35 W                      |
| C     | -                           |
| D     | 2.27 W                      |
| E     | 2.44 W                      |

# TO-252-5S Test Board

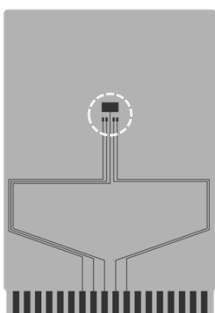
(1) Board A

 IC Mount Area



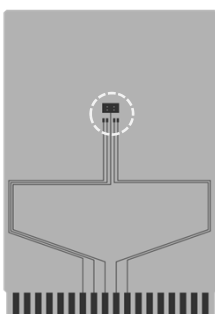
| Item                        | Specification       |   |
|-----------------------------|---------------------|---|
| Size [mm]                   | 114.3 x 76.2 x t1.6 |   |
| Material                    | FR-4                |   |
| Number of copper foil layer | 2                   |   |
| Copper foil layer [mm]      | 1                   | Land pattern and wiring for testing: t0.070 |
|                             | 2                   | -   |
|                             | 3                   | -   |
|                             | 4                   | 74.2 x 74.2 x t0.070                        |
| Thermal via                 | -                   |   |

(2) Board B

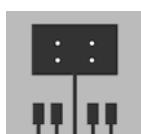


| Item                        | Specification       |   |
|-----------------------------|---------------------|---|
| Size [mm]                   | 114.3 x 76.2 x t1.6 |   |
| Material                    | FR-4                |   |
| Number of copper foil layer | 4                   |   |
| Copper foil layer [mm]      | 1                   | Land pattern and wiring for testing: t0.070 |
|                             | 2                   | 74.2 x 74.2 x t0.035                        |
|                             | 3                   | 74.2 x 74.2 x t0.035                        |
|                             | 4                   | 74.2 x 74.2 x t0.070                        |
| Thermal via                 | -                   |   |

(3) Board C



| Item                        | Specification                 |   |
|-----------------------------|-------------------------------|---|
| Size [mm]                   | 114.3 x 76.2 x t1.6           |   |
| Material                    | FR-4                          |   |
| Number of copper foil layer | 4                             |   |
| Copper foil layer [mm]      | 1                             | Land pattern and wiring for testing: t0.070 |
|                             | 2                             | 74.2 x 74.2 x t0.035                        |
|                             | 3                             | 74.2 x 74.2 x t0.035                        |
|                             | 4                             | 74.2 x 74.2 x t0.070                        |
| Thermal via                 | Number: 4<br>Diameter: 0.3 mm |   |




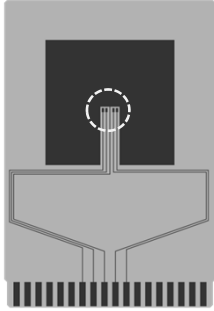
enlarged view

No. TO252-5S-A-Board-SD-1.0

# TO-252-5S Test Board

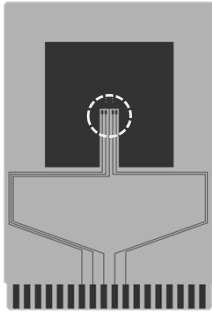
**(4) Board D**

 IC Mount Area



| Item                        |   | Specification  |
|-----------------------------|---|--|
| Size [mm]                   |   | 114.3 x 76.2 x t1.6                                    |
| Material                    |   | FR-4   |
| Number of copper foil layer |   | 4  |
| Copper foil layer [mm]      | 1 | Pattern for heat radiation: 2000mm <sup>2</sup> t0.070 |
|                             | 2 | 74.2 x 74.2 x t0.035                                   |
|                             | 3 | 74.2 x 74.2 x t0.035                                   |
|                             | 4 | 74.2 x 74.2 x t0.070                                   |
| Thermal via                 |   | -  |

**(5) Board E**




| Item                        |   | Specification  |
|-----------------------------|---|--|
| Size [mm]                   |   | 114.3 x 76.2 x t1.6                                    |
| Material                    |   | FR-4   |
| Number of copper foil layer |   | 4  |
| Copper foil layer [mm]      | 1 | Pattern for heat radiation: 2000mm <sup>2</sup> t0.070 |
|                             | 2 | 74.2 x 74.2 x t0.035                                   |
|                             | 3 | 74.2 x 74.2 x t0.035                                   |
|                             | 4 | 74.2 x 74.2 x t0.070                                   |
| Thermal via                 |   | Number: 4<br>Diameter: 0.3 mm                          |



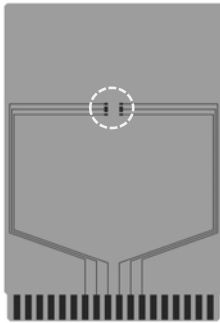
enlarged view

No. TO252-5S-A-Board-SD-1.0

# HSOP-6 Test Board

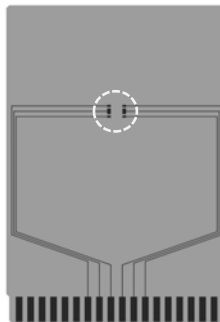
 IC Mount Area

(1) Board A



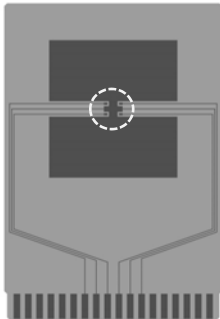
| Item                        | Specification       |   |
|-----------------------------|---------------------|---|
| Size [mm]                   | 114.3 x 76.2 x t1.6 |   |
| Material                    | FR-4                |   |
| Number of copper foil layer | 2                   |   |
| Copper foil layer [mm]      | 1                   | Land pattern and wiring for testing: t0.070 |
|                             | 2                   | -   |
|                             | 3                   | -   |
|                             | 4                   | 74.2 x 74.2 x t0.070                        |
| Thermal via                 | -                   |   |

(2) Board B



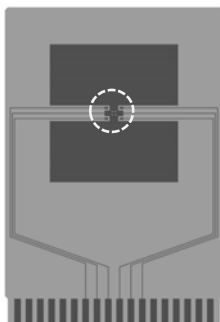
| Item                        | Specification       |   |
|-----------------------------|---------------------|---|
| Size [mm]                   | 114.3 x 76.2 x t1.6 |   |
| Material                    | FR-4                |   |
| Number of copper foil layer | 4                   |   |
| Copper foil layer [mm]      | 1                   | Land pattern and wiring for testing: t0.070 |
|                             | 2                   | 74.2 x 74.2 x t0.035                        |
|                             | 3                   | 74.2 x 74.2 x t0.035                        |
|                             | 4                   | 74.2 x 74.2 x t0.070                        |
| Thermal via                 | -                   |   |

(3) Board D



| Item                        | Specification       |  |
|-----------------------------|---------------------|--|
| Size [mm]                   | 114.3 x 76.2 x t1.6 |  |
| Material                    | FR-4                |  |
| Number of copper foil layer | 4                   |  |
| Copper foil layer [mm]      | 1                   | Pattern for heat radiation: 2000mm <sup>2</sup> t0.070 |
|                             | 2                   | 74.2 x 74.2 x t0.035                                   |
|                             | 3                   | 74.2 x 74.2 x t0.035                                   |
|                             | 4                   | 74.2 x 74.2 x t0.070                                   |
| Thermal via                 | -                   |  |

(4) Board E

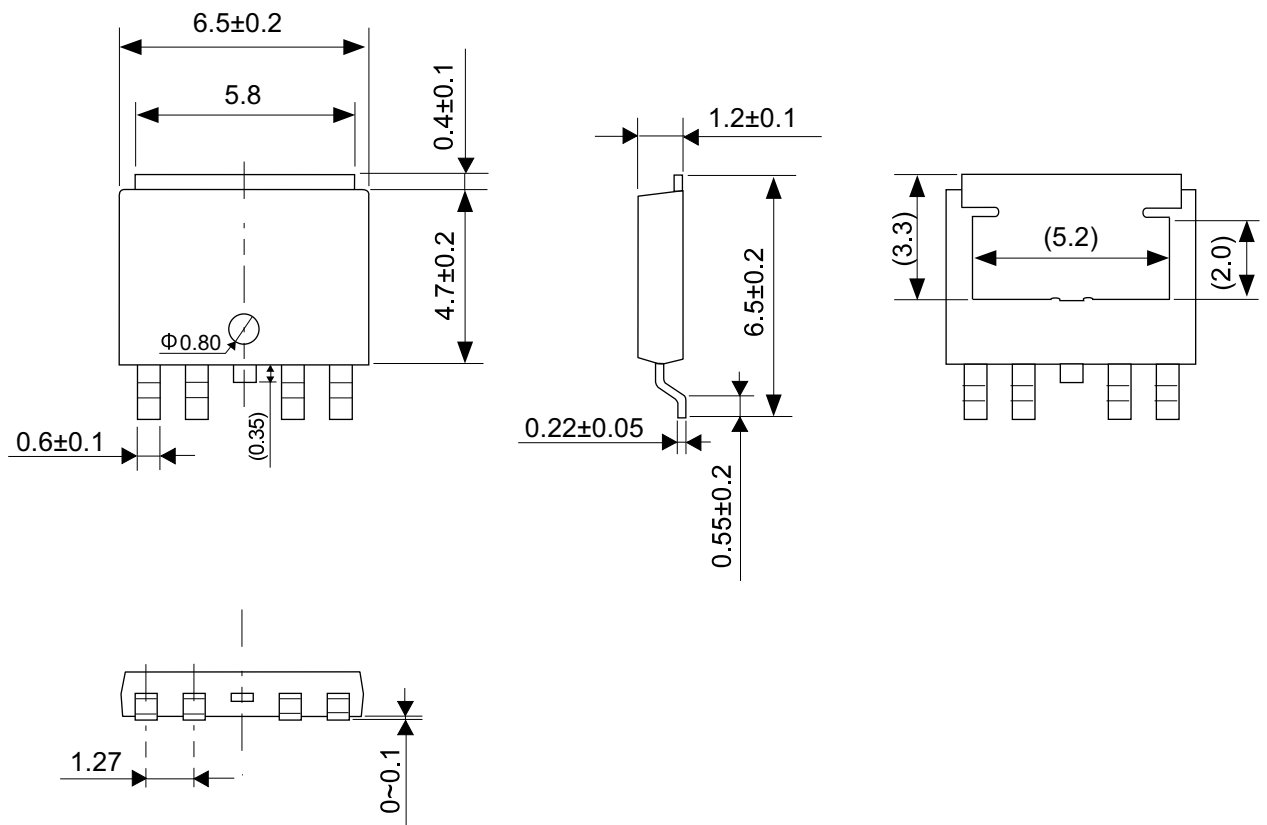


| Item                        | Specification                 |  |
|-----------------------------|-------------------------------|--|
| Size [mm]                   | 114.3 x 76.2 x t1.6           |  |
| Material                    | FR-4                          |  |
| Number of copper foil layer | 4                             |  |
| Copper foil layer [mm]      | 1                             | Pattern for heat radiation: 2000mm <sup>2</sup> t0.070 |
|                             | 2                             | 74.2 x 74.2 x t0.035                                   |
|                             | 3                             | 74.2 x 74.2 x t0.035                                   |
|                             | 4                             | 74.2 x 74.2 x t0.070                                   |
| Thermal via                 | Number: 4<br>Diameter: 0.3 mm |  |



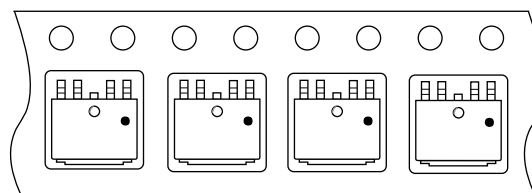
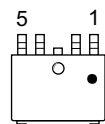
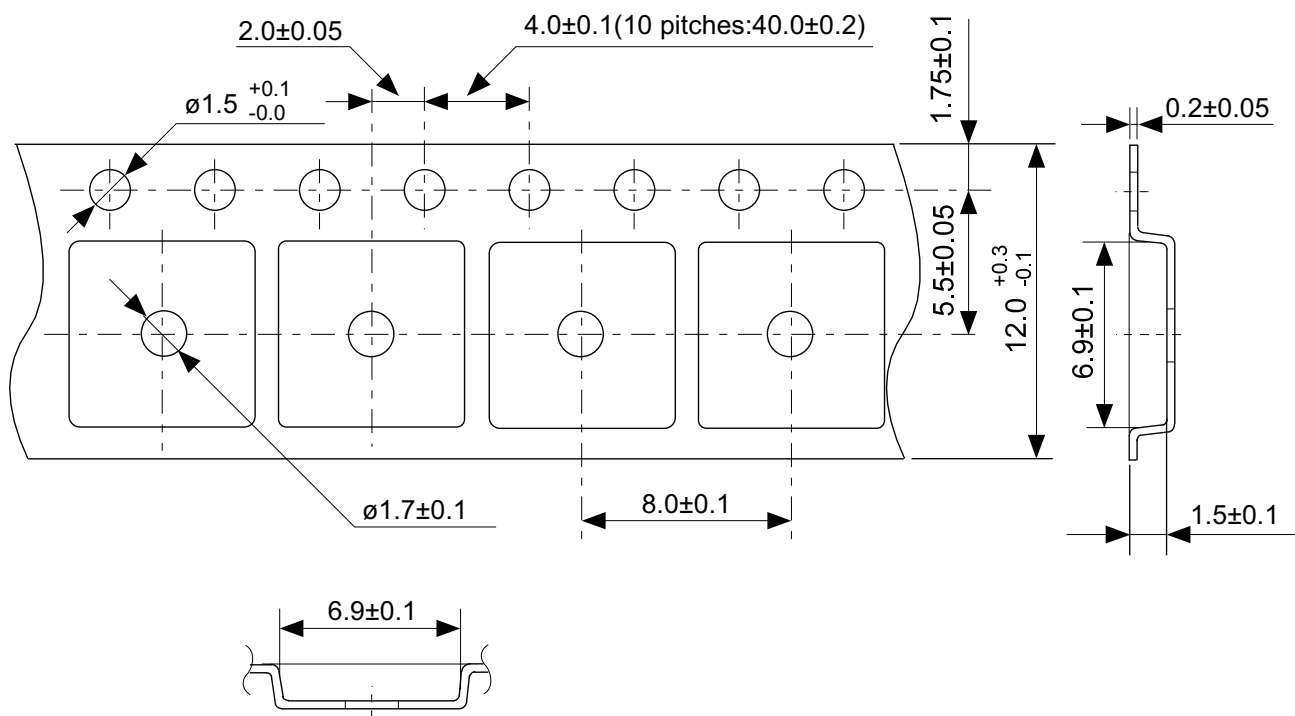
enlarged view

No. HSOP6-A-Board-SD-1.0



No. VA005-A-P-SD-2.0

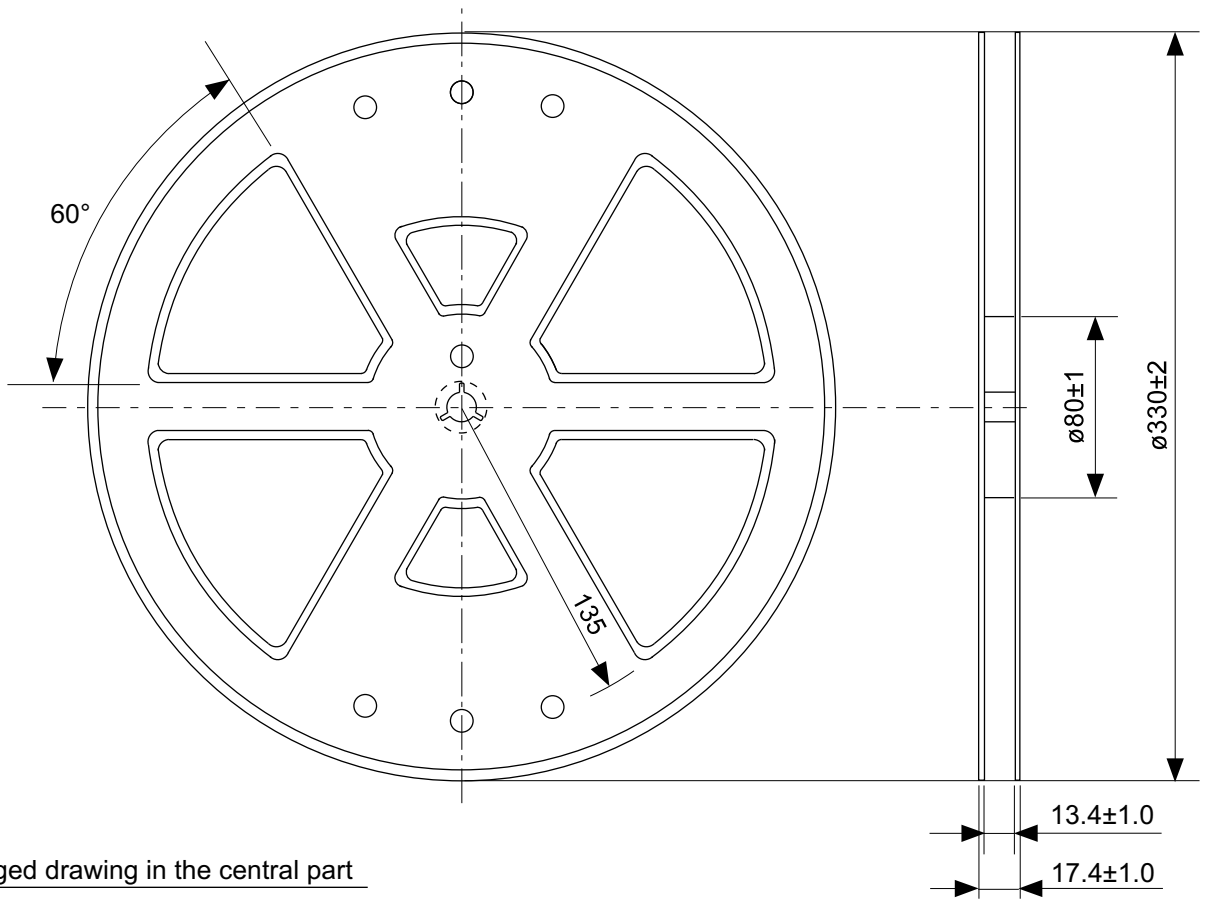
|                   |                            |
|-------------------|----------------------------|
| TITLE             | TO-252-5S-A-PKG Dimensions |
| No.               | VA005-A-P-SD-2.0           |
| ANGLE             |                            |
| UNIT              | mm                         |
| <b>ABLIC Inc.</b> |                            |



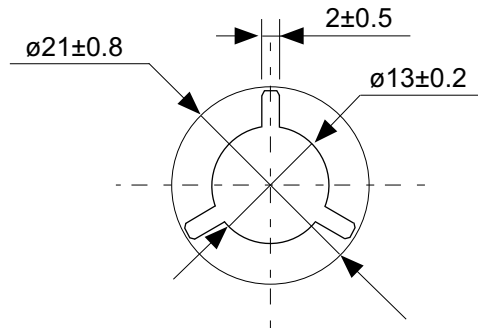
→  
Feed direction

No. VA005-A-C-SD-1.0

|                   |                          |
|-------------------|--------------------------|
| TITLE             | TO-252-5S-A-Carrier Tape |
| No.               | VA005-A-C-SD-1.0         |
| ANGLE             |                          |
| UNIT              | mm                       |
|                   |                          |
| <b>ABLIC Inc.</b> |                          |



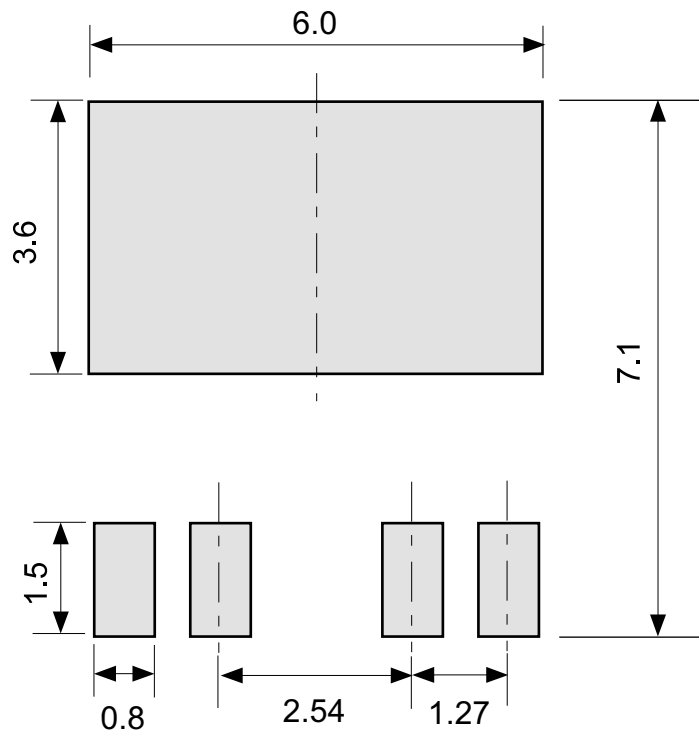
Enlarged drawing in the central part



No. VA005-A-R-SD-1.0

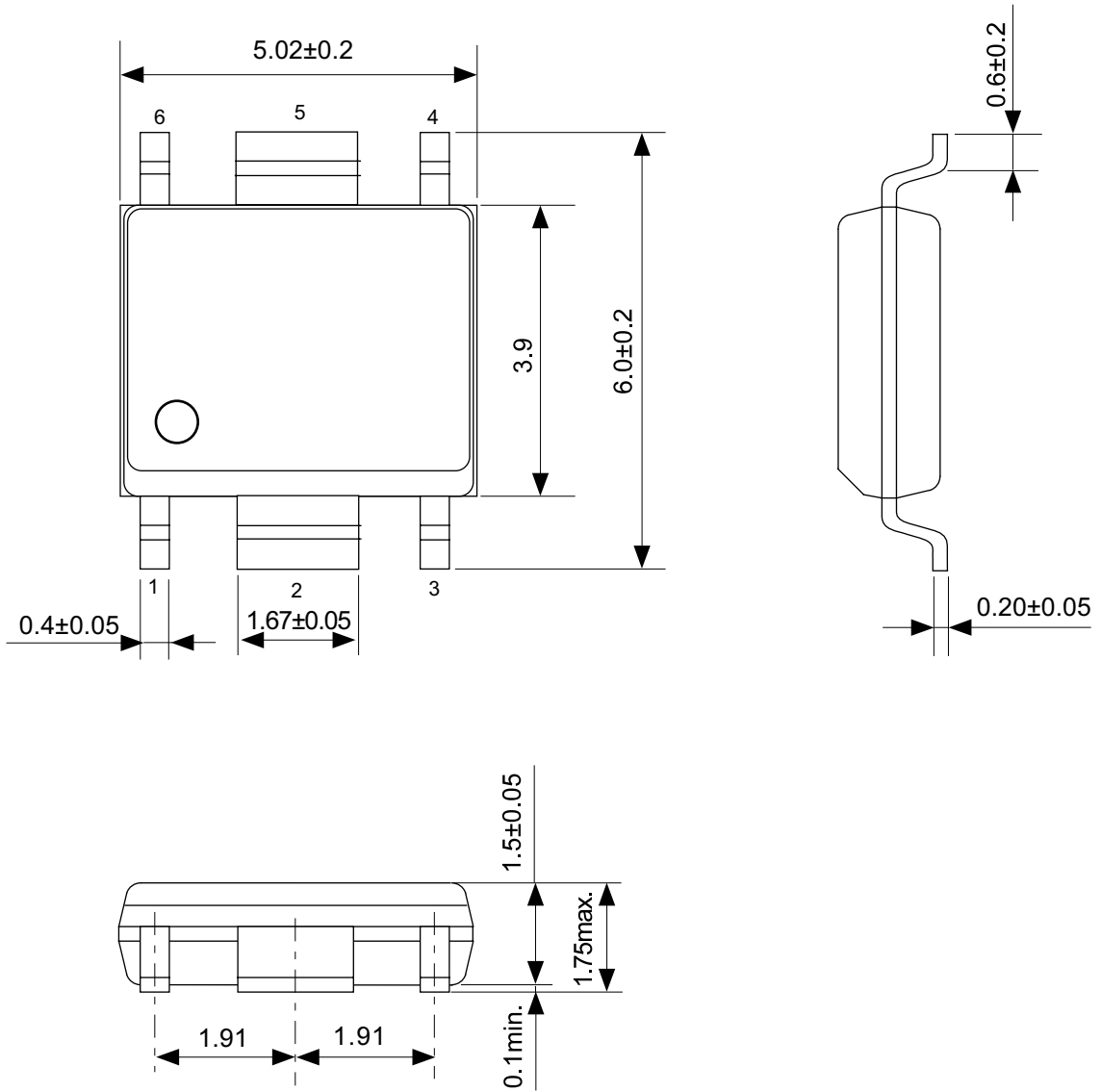
|                   |                  |      |       |
|-------------------|------------------|------|-------|
| TITLE             | TO-252-5S-A-Reel |      |       |
| No.               | VA005-A-R-SD-1.0 |      |       |
| ANGLE             |                  | QTY. | 4,000 |
| UNIT              | mm               |      |       |
|                   |                  |      |       |
| <b>ABLIC Inc.</b> |                  |      |       |





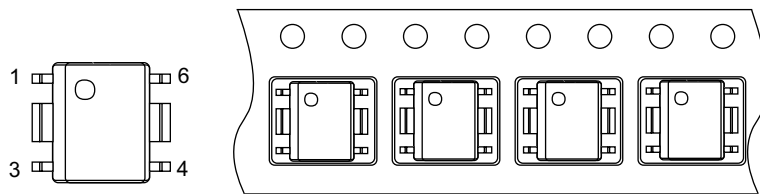
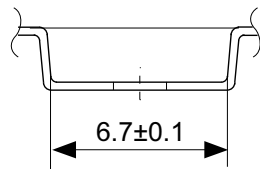
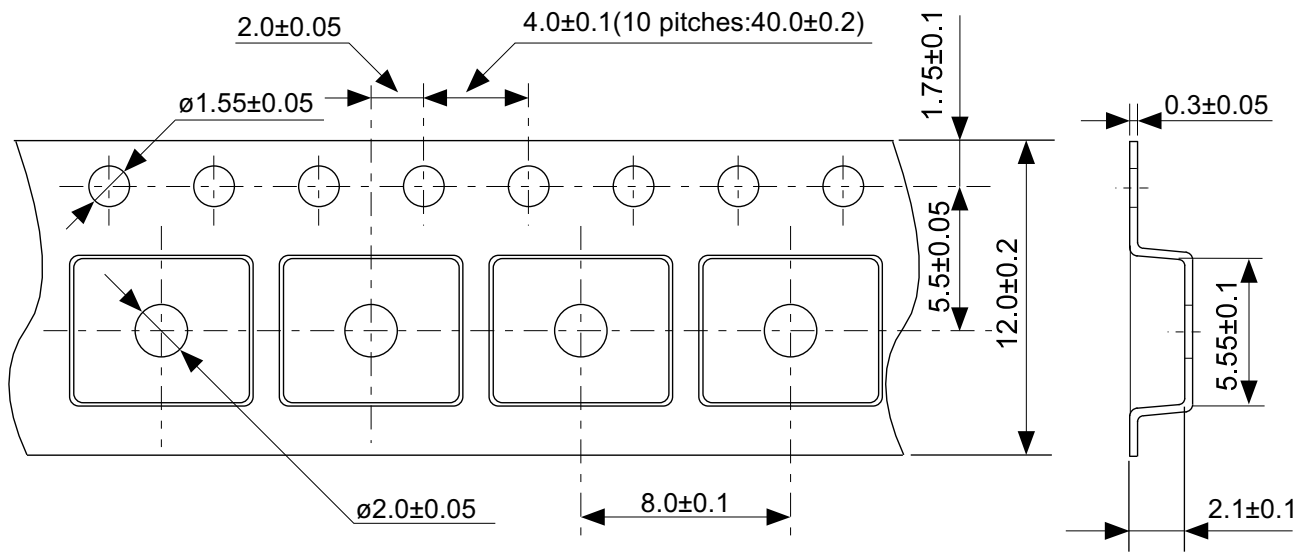
No. VA005-A-L-SD-1.0

|                   |                                     |
|-------------------|-------------------------------------|
| TITLE             | TO-252-5S-A<br>-Land Recommendation |
| No.               | VA005-A-L-SD-1.0                    |
| ANGLE             |                                     |
| UNIT              | mm                                  |
|                   |                                     |
| <b>ABLIC Inc.</b> |                                     |



No. FH006-A-P-SD-2.1

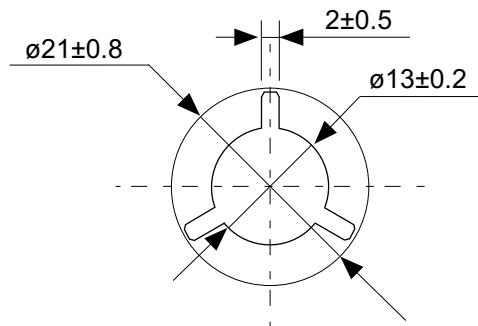
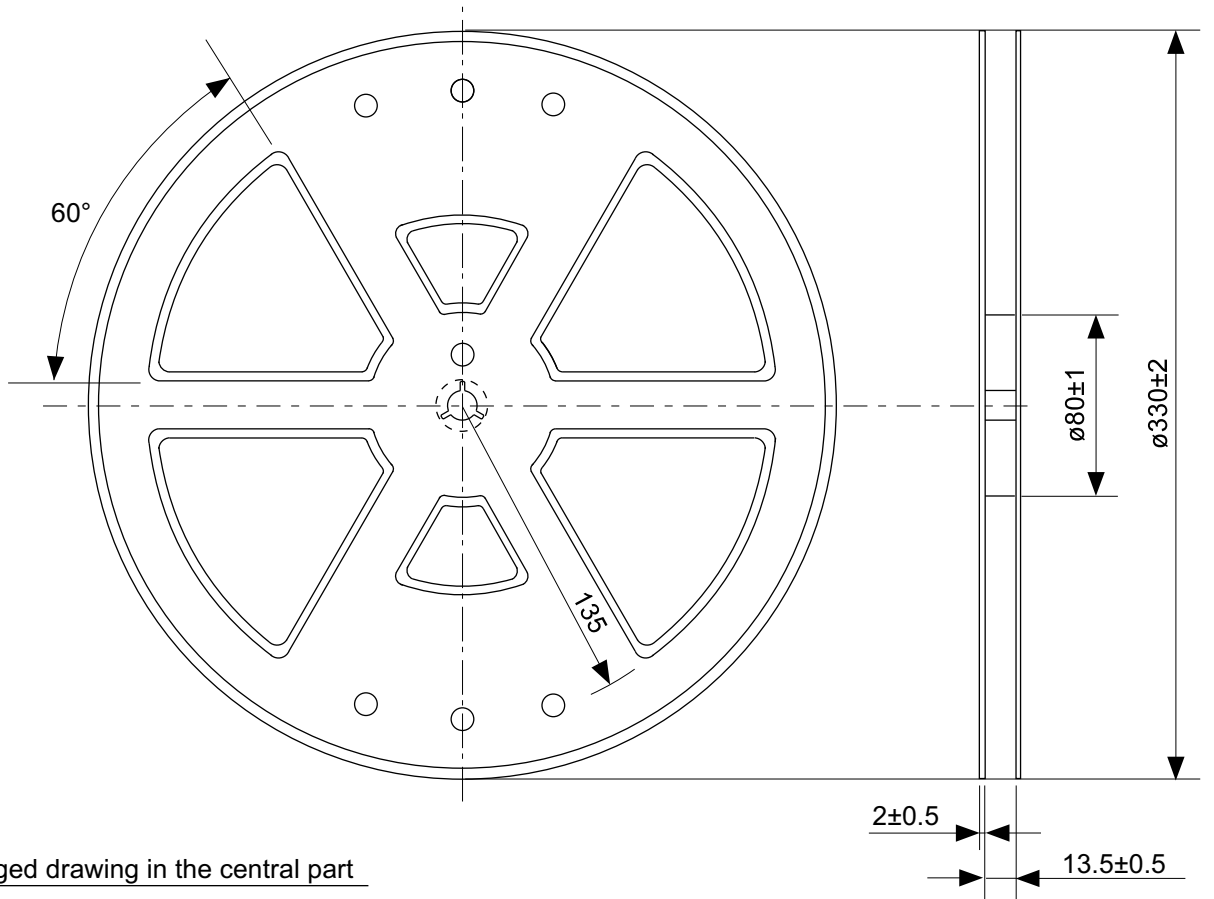
|                   |                        |
|-------------------|------------------------|
| TITLE             | HSOP6-A-PKG Dimensions |
| No.               | FH006-A-P-SD-2.1       |
| ANGLE             |                        |
| UNIT              | mm                     |
|                   |                        |
| <b>ABLIC Inc.</b> |                        |



→  
Feed direction

No. FH006-A-C-SD-2.0

|                   |                      |
|-------------------|----------------------|
| TITLE             | HSOP6-A-Carrier Tape |
| No.               | FH006-A-C-SD-2.0     |
| ANGLE             |                      |
| UNIT              | mm                   |
|                   |                      |
| <b>ABLIC Inc.</b> |                      |



No. FH006-A-R-S1-1.0

|                   |                  |      |       |
|-------------------|------------------|------|-------|
| TITLE             | HSOP6-A-Reel     |      |       |
| No.               | FH006-A-R-S1-1.0 |      |       |
| ANGLE             |                  | QTY. | 4,000 |
| UNIT              | mm               |      |       |
|                   |                  |      |       |
| <b>ABLIC Inc.</b> |                  |      |       |

## Disclaimers (Handling Precautions)

1. All the information described herein (product data, specifications, figures, tables, programs, algorithms and application circuit examples, etc.) is current as of publishing date of this document and is subject to change without notice.
2. The circuit examples and the usages described herein are for reference only, and do not guarantee the success of any specific mass-production design.  
ABLIC Inc. is not liable for any losses, damages, claims or demands caused by the reasons other than the products described herein (hereinafter "the products") or infringement of third-party intellectual property right and any other right due to the use of the information described herein.
3. ABLIC Inc. is not liable for any losses, damages, claims or demands caused by the incorrect information described herein.
4. Be careful to use the products within their ranges described herein. Pay special attention for use to the absolute maximum ratings, operation voltage range and electrical characteristics, etc.  
ABLIC Inc. is not liable for any losses, damages, claims or demands caused by failures and / or accidents, etc. due to the use of the products outside their specified ranges.
5. Before using the products, confirm their applications, and the laws and regulations of the region or country where they are used and verify suitability, safety and other factors for the intended use.
6. When exporting the products, comply with the Foreign Exchange and Foreign Trade Act and all other export-related laws, and follow the required procedures.
7. The products are strictly prohibited from using, providing or exporting for the purposes of the development of weapons of mass destruction or military use. ABLIC Inc. is not liable for any losses, damages, claims or demands caused by any provision or export to the person or entity who intends to develop, manufacture, use or store nuclear, biological or chemical weapons or missiles, or use any other military purposes.
8. The products are not designed to be used as part of any device or equipment that may affect the human body, human life, or assets (such as medical equipment, disaster prevention systems, security systems, combustion control systems, infrastructure control systems, vehicle equipment, traffic systems, in-vehicle equipment, aviation equipment, aerospace equipment, and nuclear-related equipment), excluding when specified for in-vehicle use or other uses by ABLIC, Inc. Do not apply the products to the above listed devices and equipments.  
ABLIC Inc. is not liable for any losses, damages, claims or demands caused by unauthorized or unspecified use of the products.
9. In general, semiconductor products may fail or malfunction with some probability. The user of the products should therefore take responsibility to give thorough consideration to safety design including redundancy, fire spread prevention measures, and malfunction prevention to prevent accidents causing injury or death, fires and social damage, etc. that may ensue from the products' failure or malfunction.  
The entire system in which the products are used must be sufficiently evaluated and judged whether the products are allowed to apply for the system on customer's own responsibility.
10. The products are not designed to be radiation-proof. The necessary radiation measures should be taken in the product design by the customer depending on the intended use.
11. The products do not affect human health under normal use. However, they contain chemical substances and heavy metals and should therefore not be put in the mouth. The fracture surfaces of wafers and chips may be sharp. Be careful when handling these with the bare hands to prevent injuries, etc.
12. When disposing of the products, comply with the laws and ordinances of the country or region where they are used.
13. The information described herein contains copyright information and know-how of ABLIC Inc. The information described herein does not convey any license under any intellectual property rights or any other rights belonging to ABLIC Inc. or a third party. Reproduction or copying of the information from this document or any part of this document described herein for the purpose of disclosing it to a third-party is strictly prohibited without the express permission of ABLIC Inc.
14. For more details on the information described herein or any other questions, please contact ABLIC Inc.'s sales representative.
15. This Disclaimers have been delivered in a text using the Japanese language, which text, despite any translations into the English language and the Chinese language, shall be controlling.

2.4-2019.07